

Welcome to INF-Tool !

- You have always asked yourself how you could publish your software as easy as -for example- Microsoft's "PowerToys" - with *full install and uninstall support*, but *only using a few KB's* for the installation stuff **optimal for distributing over the Internet ?**

OR:

- you are looking for a tool which has the power to offer **advanced setup functionality combined with extremely small and smart installation packages** (which would increase your package by just ... let's say ... **between 5-25 kb** ?....)
- You have finished your project, but don't want to spend additional hours..days.. writing and/or designing the installation routines for your program ?
- You want to publish your software via the Internet, and want to make the installation part of your program as tiny as possible ?
- You don't have the money to buy expensive installation software, which would supposedly cost additional bucks for each upgrade ?
- You are looking for a tool which makes creating an installation a task of less than 10 minutes ?
- You simply hate oversized installation software ?
- You just have to provide a few files and don't like to add an overhead of 100's of KB's for installation software ?
- Or you have a lot of files to install but don't like to use huge installation tools for other reasons.
- You want to use fast and easy installation routines ?
- Your project will run under Windows95, Windows 98, Windows NT 4 or NT 5 ?
- You need **"single EXE" setups** ? Or **ZIPped** distribution packages ? Or you would like **CAB (Cabinet) packages** for even stronger compression ? Or regular disks ?
- You want to *avoid common disadvantages of INF installation scripts* like: complicated declaration, unsupported Long File Names, unusual installation ("you have to click the right mouse button ..."), documentation leaks etc. ?

If you answered "YES" to even one of the questions above, then INF-Tool is the Tool for you !

It was designed for making installations a snap !

Choose from 1 of 4 distribution options.

All of them are based on *Windows' built-in Setup techniques*, which saves a lot of overhead for **your** distribution package. Huge and expensive installation software should now be obsolete for you !

Method 1: single EXE installation

Starting with Version 3.0, INF-Tool supports single EXE installs !



Your files will automatically be packed (strongest ZIP compression) into a [single EXE file](#), which "behaviour" may be fully configured by you in the Distribution options window. You can define your personal ["About" text](#) of unlimited size (which will be displayed in the window you see above), [License information](#) of unlimited size (which will be displayed after the user has started the EXE program), a customizable Caption text for the Installation window and more.

In an upcoming release, INF-Tool will also offer an option to [password-encrypt](#) your package. All of that for just about 30k increase compared to a standard ZIP archive !

After clicking the "Install" button (you see it above), the program extracts all compressed files to a temporary directory, then everything is installed exact the way you defined it.

Note that with INF-Tool, you have much more options what to do -and how to do it- than in most of all other installation programs ! INF installation techniques are "naturally" implemented in the Windows system - thus, you have many, many ways to modify your users Windows configuration and the application environment.

[Suggested for:](#)

- distribution to novice users (what can be easier than letting them run an EXE file which does everything fully automatic ?)
- Internet distribution !
- complex installations with many files
- if you need integrity checks
- if your users should confirm your license agreement before installing
- most professional looking installations

Method 2: enter "setup" and press [Enter]

The registered version of INF-Tool contains a utility named `SETUP.EXE` (only 4k !!) which will initialize and start your INF script. Your users will just have to enter "setup" and press the Enter key - that's all.

See [more information](#).

[Suggested for:](#)

- distribution on diskettes, CD-ROM's
- distribution from fixed directories
- distribution via .ZIP or .CAB compressed archive
- distribution via Internet (if you can't use "Single EXE" packages)

Method 3: right-click the INF script with the mouse

Right-clicking the INF file with the mouse and selecting "Install.." from the popup-menu is the common way to install INF installation scripts - and also the most complicated (in my opinion). Thus, you should describe one of the methods above when distributing your software package.

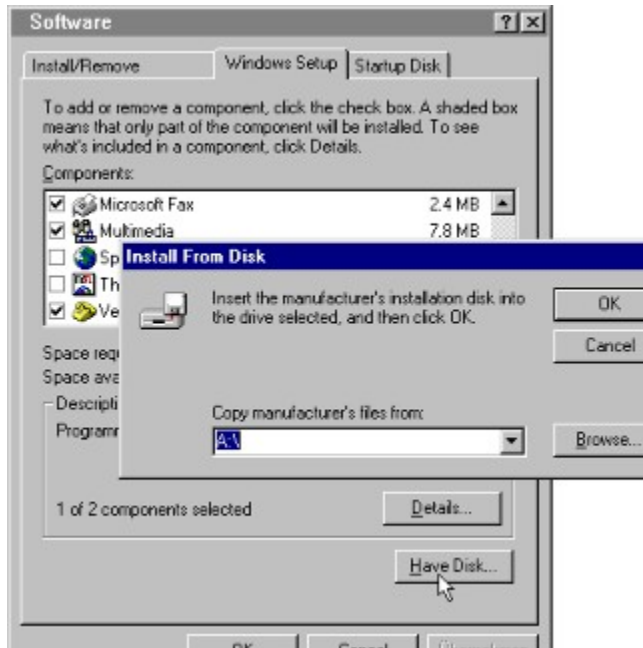
However, INF scripts created by INF-Tool are fully compatible for being used that method.

Suggested for:

- more experienced users
- smallest distribution packages
- installations which have to be easily reconfigured

Method 4: use Windows' Software Setup Dialog !

INF-Tool creates fully Windows-Setup compatible INF installation scripts. Just click on the "Software" applet of Windows' Control Panel, choose "Have Disk.." and point it to the disk/directory where your INF script and the files are stored. Windows will then start the installation, including all defined options like Startup group creation, Uninstall options etc.



Suggested for:

- novice users. Once familiar with starting a setup program from the Control panel, they will be able to do any of your installations from here - without any additional explanations.
- installing optional components (support planned for an upcoming release of INF-Tool)
- nice-to-view, Windows-styled installations
- installations which have to be combined with Windows-related installations

Step #1: enter Project information

Your [project information](#) is entered here.

First, enter the desired *name of your script* in the "save as.." field or select a previously designed script from the "Name of the installation script" list.

Please note that Windows 95 only allows script names which don't extend the "8+3" convention (not more than 8 chars for the file name, INF-Tool will automatically add ".INF" to this name).

Tip: don't use names like "Setup" or "Install" for your script, since this could cause name conflicts with other installations and lead to problems when your user will try to uninstall one of these products. Instead try to use names which remind of your program, e.g., "PopEdit" or such.

Then, enter the following informations concerning your installation:

- *Name of your Application **

This name will be displayed when setting up your INF script, it will be used as Caption bar title and in the Uninstall list of Windows' Control Panel.

- *Version number*

- *a short description of your project*

- *your name*

- *optional Copyright notice*

* this field is required !

Step #2: which files to install ?

This is the central part of designing your installation script.

Add all the files that have to be installed -

- either by clicking on the "add file" button or
- by dragging them from the Explorer

...whichever you prefer.

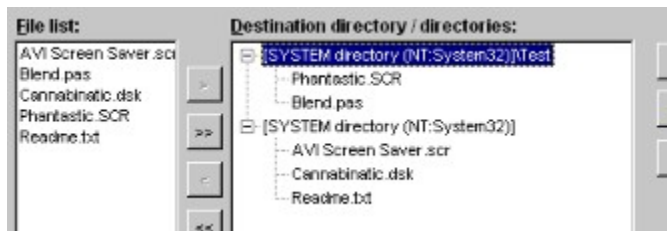
Note: you *don't* have to add your INF installation script, INF-Tool will do this automatically when it is required (e.g., if you use the Uninstall feature). Starting with Version 3.0, INF-Tool will also add the AdvPack files automatically if they are needed.

Files which can't be found by INF-Tool, are marked *red* in this list. Generation of Distribution archives/directories and the use of "long file names" is only possible if the required files can be found somewhere on your disks !

Registered version:

Additionally, you can define copy flags for each file, like "don't overwrite the file if it already exists at the destination directory" or "don't include a version-check".

Step #3: define destination directories (optional)



In this part, you can **define the destination directories** for your files - where they have to be copied to.

At the *left* side of this form you'll find the list of files you have selected for installation at Step #2. The *right* list holds your list of destination directories (just click "Add" to add a target directory of your choice). Next, click the preferred file(s) of the left list and drop them on the directory entry you desire as target for these files.

If you do nothing here (and the "destination directories" list is empty), ALL files will be installed in the pre-defined "Windows" directory.

How to define a destination directory:

With INF-Tool you can either define fixed destination directories for a group of files or let your customer select / enter a destination path (supported by the registered version).

A fixed directory definition (or the default destination for a user-configured path) for INF installation scripts consists of 2 parts:

- a **logical root** directory (can be the root directory of a disk, but also a directory like the windows directory, the System directory and others) and
- a **subdirectory of this root** (like the subdirectory "Fonts" for the "logical root directory" Windows*. *).

Each directory definition can be edited and deleted.

Example #1:

If you choose the "Shared directory" (which is commonly the "Windows" directory all users of a network have access to) and define "MyApp" as subdirectory, the full installation path for the defined filegroup will (for example) be C:\Windows\MyApp.

Example #2:

If a subdirectory of the "Program files" directory should be created, choose the "Application directory" (Windows will "translate" this to the root directory of your user's "Program Files" directory) and enter "Program\MyApp" as a subdirectory of it.

Example #3:

You want to copy some files to the C:\MyFiles directory. Just select "Root directory of the Boot drive" from the list and enter "MyFiles" as subdirectory.

Example #4:

You select a user-defined destination directory. Select "Windows directory" as logical root directory and "MySoft" as subdirectory for this root directory. You user will then be prompted to enter a directory where he wants to install your software. This directory selection will default to C:\Windows\MySoft (if his Windows installation is located in C:\Windows).

Step #4: modify registry (optional)

Using the power of registry strings lets you nearly do anything with your INF scripts !
If your Application needs registry entries (e.g., pre-defined registration data, configuration defaults, ..), INF-Tool offers you a very easy way to do that. Just click on "add entry" and define what you need !

Example #1:

In HKEY_CLASSES_ROOT, at "CLSID\{042BADC5-5E58-11CE-B610-524153480001}", a new branch named "VCI Formula One Workbook" should be created.

- click "Add"
- check "HKEY_CLASSES_ROOT"
- as subkey, enter "CLSID\{042BADC5-5E58-11CE-B610-524153480001}" (without quotes)
- since this should be a branche, just leave the field "value name" blank.
- As flag, choose "Registry data type REG_EXPAND_SZ" (= branch)
- as value, enter "VCI Formula One Workbook" (again, without the quotes)

Example #2:

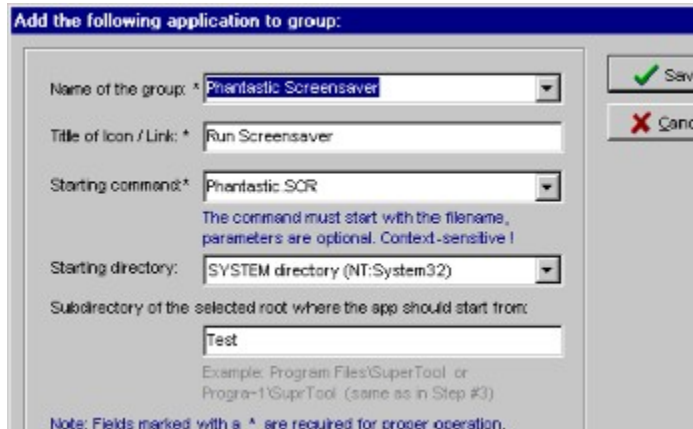
In HKEY_CLASSES_ROOT, at the branch "CLSID\{042BADC5-5E58-11CE-B610-524153480001}\ToolboxBitmap32", the entry "C:\\Program Files\\Roslon Controls\\System\\Vcf132.ocx, 19401" should be added.

- click "Add".
- check "HKEY_CLASSES_ROOT"
- as subkey, enter "CLSID\{042BADC5-5E58-11CE-B610-524153480001}\\ToolboxBitmap32" (without quotes)
- no value name is required here, so leave it empty
- choose "REG_SZ (String)" (the required value is a string)
- enter "C:\\Program Files\\Roslon Controls\\System\\Vcf132.ocx, 19401" (without quotes) as value.

Note:

Registry strings have to be defined in the same format as they are physically stored in the registry, i.e., a DWORD entry needs to be defined as "00 00 00 01" instead of "00000001".

Step #5: add files to Start Menu and/or Windows Desktop (optional)



The screenshot shows a dialog box titled "Add the following application to group:". It contains several fields for configuring a menu item:

- Name of the group:** A dropdown menu with "Phantastic Screensaver" selected.
- Title of icon / Link:** A text box containing "Run Screensaver".
- Starting command:** A dropdown menu with "Phantastic.SCR" selected. Below it, a note reads: "The command must start with the filename, parameters are optional. Context-sensitive!".
- Starting directory:** A dropdown menu with "SYSTEM directory (NT:System32)" selected.
- Subdirectory of the selected root where the app should start from:** A text box containing "Test". Below it, an example is given: "Example: Program Files\SuperTool or Program-1\SuperTool (same as in Step #3)".

At the bottom, a note states: "Note: Fields marked with a * are required for proper operation." On the right side of the dialog, there are "Save" and "Cancel" buttons.

If a Group in the Startup Menu, on the Windows95/NT Desktop, the SendTo menu etc. should be created, this is the place where you can configure these settings. You can define the preferred titles of the programs which should be added to the menu, their startup directory, optional parameters and more.

Name of the group

This is the name of the "Startup menu" group where this program should be listed. You can either define a new group (like "Fellner Software") or select a predefined group like "Startup", "Autostart", "Desktop" etc. or leave it empty to create a link directly in the "Programs" group. Already defined group names can easily be selected from the list.

Title of Icon / Link

Enter the name of the entry as it should be listed in Windows Start menu.

Starting command

Just select the program (the program which should be started when the user selects your menu item of the Start menu) from the list of defined installation files. If needed, you may also enter parameters for your program here.

Starting directory and Subdirectory

Here you have to define the Starting directory and -subdirectory as you already did it in [Step #3](#). Note that they **should be defined exactly equal as defined there**, otherwise Windows could have problems to add them to the Menu.

This feature is only supported in the registered version of INF-Tool.

Step #6: Modify system files

On Windows 95 machines, you can modify the Autoexec.bat and/or Config.sys files here. On Windows 95 and Windows NT computers, you will be also able to modify INI configuration files.

Offered modifications are:

- **AUTOEXEC.BAT:**

- Add to path
- Remove from path
- Add a command to Autoexec.bat
- Delete a command from Autoexec.bat
- Set environment variables
- Remove environment variable
- Set temporary directory

- **CONFIG.SYS:**

- Set FILES= values
- Set BUFFERS= values
- Set LASTDRIVE= value
- Set STACKS= values
- Set FCBS= values
- Set COUNTRY= parameters
- Set DOS= parameters
- Set SHELL= parameters
- Add device driver commands
- Remove from current device driver commands
- Delete other Config.sys keys

- **Register OCX and/or DLL files:**

Just a few mouseclicks and your .OCX- or .DLL files will be registered in the Windows Registry of your customer's PC ! Just click the filenames you want to be registered, that's all.

- **Manipulate INI files:**

INF-Tool lets you easily modify .INI files on the customer's PC.

This feature will be supported in one of the next versions and should be released within a few days or weeks.

Step #7: User dialogs (optional)

Icon for Windows "Software Setup" dialog:

Define the icon for your package when your user installs from the "Software" applet of Window's Control Panel.

Enable "Uninstall" Feature

Check this option and the installation script will add an entry to the Windows Control Panel 'Add/Remove Programs' dialog. Your Applications name has to be defined if you want this feature to work.

Uninstall dialogs:

If you like, you can also add some user dialogs to your scripts.

Currently, INF-Tool only supports uninstall dialogs: one before uninstalling, one after successful execution of the uninstall process. Future versions will also offer install dialogs like "Do you want to install ... ?" etc. *Please leave these fields empty* if you don't want INF-Tool to automatically add commands which would require AdvPack files to be present on your customer's computer.

Note:

Basically, dialogs aren't supported by Windows 95 / NT's INF scripts. This feature requires 3 newer, additional DLL libraries in your user's System directory: ADVPACK.DLL, W95INF16.DLL and W95INF32.DLL. In most cases they will already be there, since popular packages, like the Internet Explorer, the PowerToys and other utilities are distributed with these files. However, it is recommended that you install them with the rest of your software package when using Uninstall dialogs - just to avoid "surprises"...

These features are only supported in the registered version of INF-Tool.

Step #8: Distribute ! (optional)

When you click "OK", INF-Tool will check all your settings and create your .INF installation script. If anything is missing or obviously not okay, INF-Tool will alert you showing the problems. The installation script will also be checked and/or saved, if you decide to:

Copy all required files to a "distribution disk directory"

Does what it says. This option makes it easier to get an overview of which files you have to copy to the distribution disks, if you want to copy them without ZIPping, to compress them by hand or whatever. Especially helpful when many files from widely spreaded directories are required.

Create a distribution archive file

INF-Tool lets you compress all the required files from *within the Tool* , offering *integrated ZIP or CAB (Cabinet) support* ! You just have to enter the name of the file archive as which you want to distribute your package and click "Generate..".

..click "OK" !

After clicking "OK", INFTool will save your settings for the currently edited installation script for safety. If you want to prevent this, click "Cancel".

AND THAT'S ALL !

Under normal circumstances, creating an .INF installation script with INF-Tool will take less than 3 (three) minutes !

modify settings of INF-Tool and options for the current INF script

INF-Tool offers the following options to configure INF-Tool and your scripts to meet your requirements:

- checking the **"Create .BAK files"** option will force INF-Tool to create safety backup copies of your script and `INFTool.ini` before it is saved.
- **"Display messages"** will popup status messages when a new .INF script was created etc.
- **"Windows98 styled buttons"** lets INF-Tool use flat buttons like Windows 98 will do. Check this option only if you like such graphical "enhancements". ;-)
- unchecking the **"Display Intro-screen"** option lets you disable the "Information screen" showing up when you start INF-Tool.
- **Open INF's with INF-Tool**
This option will modify your registry so that every time you press [Enter] on an INF script, INF-Tool will load this INF script automatically. Of course, this will only work perfectly when the INF script was designed by INF-Tool on your computer, since additional information is only stored in your `INFTool.ini` configuration file and not in the INF file itself.
- **Repair INF functionality**
If INF scripts can't be installed by right-clicking your mouse and selecting "Install.." anymore, try checking this option and click "Save configuration" afterwards. INF-Tool will then try to fix the required functionality in your Registry again.
- at the options screen, you can also define the **"Default flag for file copy operations"**.
- **"INF-Tool default language"**. Here you can choose your preferred language to ease your work with INF-Tool. Currently, the following languages are supported:
English, German, French, Swedish, Greek.

Options for the currently opened project are:

- **"Reboot" or "Restart Windows"** after executing the installation script.
- **Add AdvPack files when required**
When this option is checked, INF-Tool will automatically add AdvPack.dll, W95inf16.dll and W95Inf32.dll to your package (and script) when required (which is only the case when you have selected Uninstall support *and* defined Uninstall dialogs). Otherwise, INF-Tool will just add the commands to the script, but you will be responsible to either add the files by hand or that they are already present on your user's computer.

Modifying an existing script

Loading other installation scripts

When you start INF-Tool, it will load the .INF script of the last session by default.
If you want to load another script (which was also created by INF-Tool), just enter it's name as a command line parameter.

Examples:

```
INFTool.exe [Enter]
```

loads the last edited installation script.

```
INFTool.exe phantast.inf [Enter]
```

loads the file phantast.inf in the current directory

```
INFTool.exe c:\ed\phantast.inf [Enter]
```

loads the script phantast.inf in the directory c:\ed .

Saving under a different filename

Just enter the desired filename as "Name of the INF installation script".
After clicking "OK", all currently loaded settings will be saved under the new filename.

The SETUP.EXE utility

Users are trained to run a "Setup.exe" program when they want to install applications. Forcing them to open the Explorer, right-click their mouse and choose "Install.." could lead them into spooky situations all of us know just too good...

That's the reason why registered users get a baby-sized **SETUP.EXE utility** (*only 4 KB !!*) which will initialize your scripts correctly when run. Your users will just have to type "setup", press the Enter key and the installation process will automagically start like you've designed it.

More: you will also get the [Source Code](#) for this Setup utility (currently, sources for C and Delphi are contained in your registered package) to help you in designing your own Setup wrappers.

Registered users: see "Tips & Tricks" helpfile for more information.

INF-Tool Parameters

Please look at the topic [loading existing installation scripts](#).

Multi-language support

INF-Tool now offers to display of other languages than english. Currently, the following languages are supported:

- *English*
- *French*
- *German*
- *Swedish*
- *Greek*

I'm still looking for people who would help me with translating to other languages !

Important information if you want to use the greek language set with INF-Tool

The standard Windows 95 distribution did not include multi-lingual fonts, so when you want the greek font, you're probably getting a font substitution.

Note: the following information applies only to Windows 95. You may destroy your font configuration if you do the described steps under Windows NT !

Multilanguage support in Windows

The following brief guide explains how you can add multilanguage support to your computer, and how to write content and view documents using various language scripts.

Adding pan-European multilanguage support to Windows 95

Adding multilanguage support to your computer lets you view documents written in any common European script. If you want to edit these documents or write your own from scratch you also need to add keyboard support for your required languages.

Follow these instructions to add multilanguage support to your computer.

- From the Control Panel select Add/Remove Programs.
- Click Multilanguage Support, and then click Details.
- Make sure a check mark appears beside the language or languages you want to use.
- Click OK, and then click OK again.
- The changes will take effect after your computer restarts.

If your copy of Windows 95 was supplied on floppy disks you can still access this feature by downloading and installing Multilanguage Support [<http://www.microsoft.com/windows/download/lang.exe>] :1,338KB, self-extracting archive, published: 1 February 1996].

You should now be able to view documents created in scripts such as Cyrillic and Greek. If you want to write using these scripts you also need to follow these instructions

- From the Control Panel select Keyboard.
- Select Language, and then click Add.
- Select the languages you need.
- Make sure Enable Indicator On Taskbar is checked.

Using pan-European support

When multilanguage support and keyboard support have been added to your Windows 95 machine the language indicator will be displayed on the task bar.

Writing multilanguage documents is easy, just click on the indicator to change language. If you are writing a document in Word, and wish to include a passage in Russian, click the language indicator on the

taskbar, and then choose Russian. If in the same document you want to include a recipe in Hungarian, click the language indicator and choose Hungarian.

[Taken from <http://www.microsoft.com/truetype/>, please visit this URL to find more information if you need it.]

Support of Windows 9? and Windows NT 4

INF-Tool creates installations which will work under both Operating Systems, **Windows 95** and **Windows NT 4**. You don't have to do anything to enable this feature, INF-Tool will create the scripts in a way to run perfectly under both OS's.

Windows 98 and **Windows NT 5.0** compatibility can be expected as there don't seem to be relevant changes in the INF implementation.

Windows NT 3.51 users, please tell me your experiences. I don't have the chance to check out the functionality of the INF scripts under this OS version, so please let me know if anything doesn't work as expected.

Known problems: none yet. *)

■ Benefits of Registration

Registration shows respect for the love and labor shareware authors put into their wares.
Please keep me going - honor the licensing agreements and register INF-Tool if it is valuable to you !

*Last, but not least, you will have a long list of **really useful benefits** if you decide to spend the few bucks
- check it out:*

Advantages of registering:

- supports "Uninstall"
- lets you create GROUPS in Program Manager / the Desktop / the Start menu
- supports Long File Names
- allows display of Textfiles, Helpfiles, ReadMe and other information after installation
- allows generation of fully functional distribution archives - 1 click and you're ready for distribution !
- support of multi-span distribution packages (under development)
- final INF scripts are saved in a more "readable" way than the unregistered version
- lets you edit already defined registry strings
- saves and loads your group definitions
- allows unlimited destination directories for your files
- allows unlimited files for your installations
- use "Uninstall dialogs"
- use user-configurable destination directories
- use the "Reboot" features.
- allows to set special special flags when copying files
- allows modification of AUTOEXEC.BAT file under Windows 95
- allows modification of CONFIG.SYS file under Windows 95
- you will receive a special "Tips and Tricks" helpfile, which informs you about special, undocumented features of INF-Tool and more
- support by e-mail (see also: [Support page](#))
- special SETUP Utility : the registered version of INF-Tool also contains a SETUP.EXE utility (including Source code), which will enable your customers to start a SETUP.EXE program like they are used to do it in most Windows compatible programs. The difference is, that our Setup program is *just 4 KB* in size ;-).
- Option to disable the Intro screen
- Updates / additional features ! As registered user, you will get every new release containing relevant improvements automatically by e-mail. ([more info](#))
- Option to save .BAK files : INF-Tool helps you to prevent losing your work

How much does INF-Tool cost ?

Single license \$ 29,- only (= DM 49,- = ATS,öS 350,- = SFR 43,-)

Registered users told me that a higher price would also be fair, but I want to keep this offer to give interested people, but primarily Freeware programmers, Students etc. the chance to get INF-Tool for a price everyone can easily afford if he/she really wants the program and its advantages for distributing his/her products.

Need more licenses ? - Save money:

- **5 licenses:** \$ 95,- (= DM 170,- = SFR 145,- = ATS 1.150,-) ,
would be **just \$ 19,-** per license ! ... *save 30 % !*
- **10 licenses:** \$ 140,- (= DM 245,- = SFR 215,- = ATS 1.680,-) ,
would be **just \$ 14,-** per license ! ... *save 50 % !!*
- **25 licenses:** \$ 225,- (= DM 390,- = SFR 340,- = ATS 2.700,-) ,
would be **just \$ 9,-** per license !! ... *save 70 % !!!*

Please read "[How to Register](#)" for information about easy and fastest way for registration.

If you like, you can have a registered version of INF-Tool within hours ! Check out the [list of registration methods](#) that are available. If you register online, you should receive your registered version (with all the advantages listed above) within 1 or 2 days - often it's possible within a few hours !!

How To Register

There are several ways for you to register.

If your preferred way of registering isn't listed here, please send me an e-mail - I'm sure we'll find a way !

- **register by regular mail:** send your registration fee by regular mail to Richard Fellner, Pazmanitengasse 24, 1020 Vienna, Austria, Europe (this is what I'd like most because I will receive the full fee without discounts. Don't worry about sending cash in the mail, just fold it into a sheet of paper so that you can't see the money through the envelope). Please see chapter "[Benefits and costs](#)" for information about additional costs when sending cheques, foreign currency or requesting disks.
- **register ONLINE** at the Ordering Network using the following URLs:
<https://www.evergreen-networks.com/register/100/104d.htm> (1 license)
<https://www.evergreen-networks.com/register/100/104e.htm> (for 5 licenses)
<https://www.evergreen-networks.com/register/100/104f.htm> (for 10 licenses)
<https://www.evergreen-networks.com/register/100/104h.htm> (for 25 licenses)
Note: these links are for secure browsers and offer 64/128-bit encryption (highest security). If your browser doesn't support secure connections, please just replace "https" by "http" and you'll be connected to the standard registration form).
- **register by Phone** - by calling the US Toll Free number 800-427-2770 of the Ordering Network. Don't forget to tell the program ID: #104d (1 license) , #104e (5 licenses), #104f (10 licenses) or #104h (25 licenses). Please note: this number is *for order taking only*, they can't help you with *any* question about support, shipment status or the program itself !
- **register by Fax** - simply enter your personal data and payment data into the software registration form (see URL's above), then find your "print" icon on your browser and print your order form to your fax directly or to your printer for a manual fax transmission. You can Fax your order form to: [503] 598-0441.
- **register by transfer to my Bank Account** - It is VERY important that the bank papers reflect your identity (1. your email address; 2. your name and/or company name; 3. your address). Bank: Creditanstalt AG. (in Austria); Account No: 10613510600; Branch: 11000; Swift: CABVATWW; To: Richard Fellner. Important: You have to add \$ 6,- (the amount the bank charges me for currency exchange - please understand). To be sure, also send me an email informing me about your transaction.

See also: [Contact Information](#)

IMPORTANT:

Please don't forget to add the following amount to your registration fee:

- \$ 6,- if you send foreign currency (other than ATS = Austrian Schillings)
- \$ 6,- if you transfer foreign currency to my bank account
- \$ 4,- if you need the software on a floppy disk by regular mail
- \$ 12,- if you send cheques
- \$ 0,- if you register online, by fax, by phone or if you send/transfer your fee in Austrian Schillings (ATS) 250,- and accept your registered version by email

None of these additional fees are for me - they are just to cover my expenses the bank or post office will charge me myself. Please understand that I can't send you a registered version if you don't add these few bucks.

Support and Updates

Support

only available to registered users. Please understand that due to the volume of mail I receive, I cannot offer support to unregistered users.

Upgrade policy

Registered users will receive **free upgrades automatically** when a new version is released. I'll try to keep this offer as long as possible. Please understand that I won't send you each small upgrade, but I want to put my time in the continued development of the program, not in sending hundreds of upgrades each week... ;-)

History

22.10.1997: Pre-Release (v1.0) ready to go

Improvements and fixes since Pre-Release v1.0:

- uninstall feature added and works
- subdirectory of a selected target dir is now properly recognized and saved
- several target dirs added to selection
- inf file now properly added to "copy files.." list
- changed background color of help file to white (better readable for <= 256 colors display)
- adds version N° to .INF header
- group definitions added and working
- group uninstall added and working
- undefined destination dirs are automatically assigned (if you don't assign a destination dir, all files will be installed to the Windows-directory by default. Or if you don't assign any files to a selected destination directory, all files will be installed to this destination by default.)
- warning when using LFN's
- "Reboot" and "Restart" option are now reserved for the registered version of INF-Tool
- deletions in file list update the group list, too, now.
- warnings if write errors of the .INF script occur
- startup directories of groups are now properly saved
- "drag & drop" buttons for file list enabled

05.11.1997: Final, public version 2.0 of INF-Tool released !

If you are upgrading from version 1.x to version 2.x:

Please delete any .INI and .INF files from your INF-Tool directory before using this version to ensure version compatibility.

Version 2.2:

- fixed: installation directory saved incorrect if no subdir defined
- fixed: incorrect status messages (for "run file after install") under Win95
- included project management (choose by dropdown list)
- saves creation date and INF-Tool version in INF header
- "add file" tries to open in directory of the 1st file
- last project saved and loaded by default
- drag & drop from Explorer to file list works again]-)
- INF-Tool asks for confirmation before closing without saving
- "Test" run added (reg'd version)
- "Help" opens again..
- Tab order corrected in some of the dialogs
- Correct display now also with "big fonts".
- incorrect display of title bar fixed.
- removed some traps with LFN's, included warning texts when LFN could cause problems

Versions 2.3 - 2.8:

- INF-Tool forgetting ".BAK" settings: fixed.
- automatic remove of temporary ZIP-directory after closing INF-Tool
- Setup.exe could be reduced to 8k (used D2 instead of D3 for linking. Thanks to Nick Naimo !)
- Filelist is now sorted in alphabetic order
- missing files are marked RED in the filelist
- Distribution directory will not be erased prior to updating it to enable you to store additional files in it.
- fixed setup.exe error message when started in DOS-Box (although installing properly) [02/12/97]
- additional target directory ID's added [01/01/98]
- When MS Plus installed & running files after the installation, the wallpaper doesn't change anymore (thanks to Nicola Viganò for pointing me to the reason for this problem)
- value name for registry strings defaults to 0 now
- version number now stored more eye-friendly
- Startup group list now cleared when changing project
- Restart now (correctly) only supported in the Windows95 part of INF scripts.
- INF-Tool now takes a filename as a parameter (INF script to be loaded)
- support of Flag for registry strings
- support for uninstall dialogs
- support for ADVPACK.DLL library
- support for various modes of file copying (e.g., file sharing, skipping etc.)
- At its first call INF-Tool now loads a demo script to demonstrate basic features
- registry now correctly cleaned up after uninstall

If you are upgrading from a version prior to v2.8:

- redefine your registry keys, your current definitions won't be saved correctly with the new release.

Version 2.9:

- supports installing from the "Software" applet of Window's Control Panel.
- help opens when F1 pressed
- new option: double clicking INF file loads INF-Tool (works when the INF script was designed by INF-Tool)
- warning message when trying to add the INF script itself (manually)
- improved project support
- INF-Tool now supports modifications of Autoexec.Bat and Config.Sys (Windows 95)
- internal ZIP compression
- configurable default file copy flag
- INF-Tool now uses the original timestamps when copying files, distribution package will be timestamped with latest filedate in package
- tries to auto-detect proper language at first start

Version 3.0:

- now supports self-extracting, single-exe Installations, with full support of License info and more.
- now allows to place symbols / links to the Windows Desktop
- pre-defined groups: Startup, Autostart, Desktop, ShellNew, SendTo
- Groupname not required anymore (-> links directly into "Programs" menu)
- reduced CPU-load when creating distribution directory
- provided "Setup" source for C++, thanks to several registered users who sent me their code snippets !
- added compatibility option for Step #2 (adding files), since a user had troubles with adding a Windows PIF file configured for MS-DOS compatibility mode. I don't if this problem was caused by the OS or Delphi - however, my fix (setting the »ofNoValidate« option for the OpenFileDialog) seems to work.

Version 3.x:

- INF-Tool now displays warnings when Files (defined in Step#2) couldn't be found (if Option "display warnings" is checked).
- Gradient caption bar removed (repeated display problems).
- integrated support of CAB (Cabinet) archives
- better trapping of package creation errors
- INF-tool now displays compression results
- offers edit mask for special Registry data
- added language support (English, German) ! Currently, hints are not translated.
- fixed problem when trying to uninstall: under Win95 groups didn't disappear.
- added support for registering .OCX / .DLL files
- new: cleanup distribution directory before rebuilding
- now allows visual selection of default copy flag
- updated and increased Tips & Tricks helpfile, e.g., many INF information resources added
- when installed from Software panel, item will now show up estimated filesizes
- user-configurable destination directories
- cleanup of empty destination directories when uninstalling
- virtual support of "Program files" directory
- added ZIP encryption support

Please inform me if you encounter bugs or incompatibilities I've not listed here.

Features to come

What's not yet supported, but planned for upcoming releases...

- use of various versions of one file name
- optional setup components (let users decide what to install)
- support of CAB self-extracting archives (scheduled: uncertain due to inadequate support and documentation of the CAB format).
- multi-span setup files (support of more than 1 disk)
- DES encryption for your packages
- INF-Tool will be able to read INF scripts NOT designed by INF-Tool. This will have some limitations, but partially it will be supported in an upcoming version.

Known problems, potential traps etc.

Potential traps when using INF installation scripts

- It's not possible to install *standard* INF scripts from "Long File Name" -Directories. This limitation is not caused by INF-Tool, but by Microsoft's implementation of the INF functionality. To prevent the potential occurrence of this problem at your customer's computers, please suggest them to install only from "standard" directories like "C:\test" or add the line "AdvancedINF=2.5" to the [Version] section of the INF script (Advpack.dll is required to use this line). The registered version of INF-Tool will add this line automatically for you.
- The use of dialogs (like "Please enter where you want to install [YourApp]:") is not supported with standard INF scripts. Currently INF-Tool supports this feature for the Uninstall function as a first step to heaven ... other dialogs will be supported in a future version, until then you can implement them easily by modifying the source for the Setup.exe utility if you are a registered user.
- There can arise problems when you want to install to locked directories. E.g, it could even be a problem to install to the Windows-Directory of Windows NT if your customer's (or your) rights are restricted in a way. Please verify this carefully before you distribute your installation packages (or mail me that your scripts don't work ;-).

Known problems when using INF-Tool:

none yet.

Please note:

Since WindowsNT handles .INF installation scripts a bit different from Windows95, there *could* occur problems under special circumstances, if you run scripts created with the *shareware* edition of INF-Tool under Windows NT. Anyway, the registered version creates the scripts in a way to work under both versions properly.

Copyright and warranties

Author : Richard Fellner

Copyright : 1997,98 by Richard Fellner, A-1020 Vienna. All rights reserved.

Users and distributors of INF-Tool must accept this disclaimer of warranty:

1) INF-Tool is supplied as is. The author disclaims all warranties, expressed or implied, including, without limitation, the warranties of merchantability and of fitness for any purpose. The author assumes no liability for damages, direct or consequential, which may result from the use of INF-Tool.

2) If you distribute this software, you must include all parts and pages without modification.

3) Richard Fellner retains the copyright to this Software. You may not re-distribute it or parts of it for profit.

4) If you re-distribute INF-Tool on CD-ROMs, in the Internet or other media, please send me a short mail about it. This helps me maintaining the last versions around. You could also send me a reference CD, the URL of your website (when you link to INF-Tool) or a copy of the article about INF-Tool (see my address beyond) for reference purposes.

Thanks...

A big THANKS to all those who helped me and/or suggested improvements along the way:

Glenn Crouch [<http://www.gold.net.au/~esb>].

Stephen Wood [<http://users.iafrica.com/s/sw/swood>]

Debi Orton [professional editor of all sorts of technical materials]

Mike Shane [professional editor of all sorts of technical materials]

Alexander Halser [www.easycash.co.at] for his great Help authoring tool which made creating this file a snap.

Robert Manning [P/A for TRW (whatever that is..) and the Delphi/Pascal consultant for AOL's PC Dev. forum]

Brendan Breen [bbreen@gy.humber.ac.uk]

Alexander Staubo [<http://home.powertech.no/alex/>] for his great & free CAB-SDK translation

Eric Engler [<http://www-afsc.saia.af.mil/~englere/>] for his great & free ZIP library

John Eccles

Olivier & Vincent Cheminot for their french translation

George Tassiulis for his greek translation

Bernt Levinsson for his swedish translation

myself for my german translation :-) ..

This program was



Thanks to this great development tool I could concentrate on the logic and functionality of creating INF scripts (which still took me dozens - or more..., but don't let me think about that.. - of hours).

This help file

.. was designed with *Help & Manual*, the great Help Authoring tool by Alexander Halser. Get it from his website at <http://www.easycash.co.at> .

Contact information

The latest version of INF-Tool can be found at the download page :
<http://www.user.xpoint.at/r.fellner/>

*Please forward any **comments** or **suggestions** to Richard Fellner at:*
email: r.fellner@xpoint.at or (when troubles),
r.fellner@bigfoot.com .
mail: Richard Fellner
Pazmanitengasse 24 / 9
1020 Wien (Austria)

Delphi Programmers are invited to visit my Website, the "[DELPHI-BOX](#)".



