

Directory Opus 9 Release Notes

This document is a compilation of notes and comments for beta testers compiled during the development process of Directory Opus 9 over the last 12 -18 months. It details some of the changes, new features and bugs fixes and updates between version 8.2 and version 9.

This document ***is essentially for information purposes only*** and is not definitive. Sections of the program, functionality and the documentation in the manual may have changed since these notes were written.

This document should be read in conjunction with the official Directory Opus 9 manual and help file.

Dr Greg Perry and Jonathan Potter, GPSoftware, Brisbane, May 25th 2007.

Version 9.0.0.4 - May 25th 2007

- Fixed problem with 'Full' Progress dialog to handle large icon sizes greater than 32x32
- The Select PATTERN command now works as expected with three character filenames (that is, when the filename is given as an argument to the command)
- Fixed problem with Duplicate File Finder not always selected all files correctly in delete mode. Also added 'Select' button to allow the files to be reselected at any time.
- Cursor down in an icon mode Lister with only one file now selects that file (Explorer compatibility)
- The labels of Go FOLDERCONTENT buttons now respect the settings in the parent button
- The File type CONTEXTMENU CONTEXTOPTIONS=windowsonly command now works correctly in the Folder Tree
- The 'Set this Description for files within selected folders' option now works in the Set Description command
- Favorites in the Folder Tree now work even if no Favorite folders are in the top level of the Favorites list
- The Images drop-list is now sorted in the Folder Options dialog
- The Default Lister no longer defaults to opening in Details mode - it now opens in the mode set in the Custom folder format
- The Go TABCLOSE command can now accept the PATH argument to close any tabs showing a specific path. The path can also accept wildcards (eg Go TABCLOSE PATH=C:* to close any tabs showing folders on C:)
- File commands that can accept a destination path on the command line (eg Copy TO=xxx) can now use the name of an FTP site entry as a destination folder. You must prefix the site name with a @ symbol. For example, for an FTP Site entry called 'myftp', you would specify Copy TO=@myftp.
- The bug fixed in 9.0.0.2 - "When the Lister search field is displayed, Opus now compensates for any change in position when it closes due to a mouse click on the file display" - is now fixed for single-click mode as well.
- Fixed problem where any Delete or Clipboard commands on the toolbar could be disabled incorrectly when navigating from My Computer to a drive in the Folder Tree
- Fixed "error 302" when downloading images from Flickr during synchronization (Flickr changed their API!)
- The 'Shutdown Directory Opus when the last Lister closes' option now waits for any running functions to complete before closing
- Drag & Drop from Outlook Express & Windows Mail now works. Also, drag & drop from Lotus Notes _should_ work.
- The slide-out navigation buttons now work properly in the icon modes
- When file extensions are hidden, inline rename no longer treats a . in the stem of a filename as representing the suffix

Version 9.0.0.3 - May 18th 2007

- Fixed problem with 'Full' Progress dialog to handle large icon sizes greater than 32x32.
- The Select PATTERN command now works as expected with three character filenames (that is, when the filename is given as an argument to the command).
- Fixed problem with Duplicate File Finder not always selected all files correctly in delete mode. Also added 'Select' button to allow the files to be reselected at any time.
- Cursor down in an icon mode Lister with only one file now selects that file (Explorer compatibility).
- The labels of Go FOLDERCONTENT buttons now respect the settings in the parent button.
- The Filetype CONTEXTMENU CONTEXTOPTIONS=windowsonly command now works correctly in the Folder Tree.
- The 'Set this Description for files within selected folders' option now works in the Set Description command.
- Favorites in the Folder Tree now work even if no Favorite folders are in the top level of the Favorites list.
- The Images drop-list is now sorted in the Folder Options dialog.
- The Default Lister no longer defaults to opening in Details mode - it now opens in the mode set in the Custom folder format.
- The Go TABCLOSE command can now accept the PATH argument to close any tabs showing a specific path. The path can also accept wildcards (e.g. Go TABCLOSE PATH=C:* to close any tabs showing folders on C:).
- File commands that can accept a destination path on the command line (e.g. Copy TO=xxx) can now use the name of an FTP site entry as a destination folder. You must prefix the site name with a @ symbol. For example, for an FTP Site entry called 'myftp', you would specify Copy TO=@myftp.
- The bug fixed in 9.0.0.2 - "When the Lister search field is displayed, Opus now compensates for any change in position when it closes due to a mouse click on the file display" - is now fixed for single-click mode as well.
- Fixed problem where any Delete or Clipboard commands on the toolbar could be disabled incorrectly when navigating from My Computer to a drive in the Folder Tree.
- Fixed "error 302" when downloading images from Flickr during synchronization (Flickr changed their API!).
- The 'Shutdown Directory Opus when the last Lister closes' option now waits for any running functions to complete before closing
- Drag & Drop from Outlook Express & Windows Mail now works. Also, drag & drop from Lotus Notes _should_ work.
- The slide-out navigation buttons now work properly in the icon modes.
- When file extensions are hidden, inline rename no longer treats a . in the stem of a filename as representing the suffix.

Version 9.0.0.2 - May 11th 2007

- Fixed remaining problems with USB licences not being recognized on some devices
- Clicking a file's icon in details/power mode can no longer enter inline rename mode - the click must now be on the file's name (compatible with Explorer)
- Inline rename now works in power/details mode even if the system double-click time is set to a fast speed
- Fixed problem with inline rename in power/details mode when cursoring down to scroll the list
- Fixed case-sensitivity problem in advanced function editor Find function
- The LINE argument for the Toolbar command now works
- If the first tab in a tab group is set to "Locked (allow changes)" it now remembers its initial folder correctly
- Importing a new configuration should no longer result in the toolbars being replaced by the default Opus 9 ones
- Opening Zips from outside of Opus now bring the existing Lister to the front if the 'Open in new tab' option is set in Explorer Replacement settings
- Fixed problem with thumbnail aspect ratio when EXIF rotation is used and the thumbnail size is not square
- Switching between power and details mode now updates to account for differences in grid lines settings
- Drag cursor no longer confused by Ctrl + Alt held down simultaneously
- Image Conversion function now handles either the width or height fields being set to empty (or 0) when resizing (this means keep the original width/height)
- Folder Tree items no longer lose any special color settings when the folder contents are changed
- The Set FLATVIEW command has a new argument - toggleoff. This causes the button to be displayed as highlighted, and will cause flatview to be turned off, whenever any flatview mode is in force, not just the one specified on the button.
- Copy TO /desktop now works
- When the Lister search field is displayed, Opus now compensates for any change in position when it closes due to a mouse click on the file display
- The paths in the Find/Duplicate/Sync panels now update (when locked) on tab change as well as folder change
- When Opus is installed on a 64 bit OS, the Preferences pages for Explorer Replacement mode and Desktop Double-click are now hidden, and these functions are disabled. This is to prevent problems caused by these functions on 64 bit systems, until Opus is certified for 64 bit operation.

Version 9.0.0.1 - May 7th 2007

- Folder Tabs set to "Locked (Allow Changes)" mode now display the path of the locked folder in their tooltip
- The label of a Folder Tab set to "Locked (Allow Changes)" mode is now reset to the locked folder as soon as the tab goes inactive
- When clicking on an active Folder Tab set to "Locked (Allow Changes)" mode to reset it to the locked folder, the tab no longer goes into inline rename mode
- Transparent floating toolbars now remain transparent when the mouse is over them - they only fade in to solid if the shift key is held down
- Improved alpha blending on transparent floating toolbars
- Added an option to Toolbars page in Preferences to disable the slide effect of auto-hide toolbars
- Fixed problem with changing Folder Tree colors
- Drag&Drop of a message from Outlook 2007 to Opus now works
- Print Folder to CSV now works correctly if some columns have no information. Also fixed problem with columns containing commas and quotes.
- Print Folder now has options to print as Tab delimited (both to disk and to clipboard) for import into Excel. Also added CSV option for clipboard.
- Fixed problem with Print Folder dialog resizing breaking once the format had been edited
- The RAR plugin now respects the Pause button in the "full" progress dialog
- Fixed problem with Breadcrumbs path field drop-down when in the root of a network device (e.g. \\Computer)
- The Breadcrumbs drop-down when in Control Panel now works
- The Copy ZIP and ADDTOZIP commands can now accept the CREATEFOLDER argument to specify the name of the destination Zip file
- USB/U3 exports in languages other than English now work even if english.dll was not exported
- Hopefully fixed conflict in Advanced Command editor with the] character on German keyboards
- Attempting to copy a file from an encrypted DVD no longer causes a crash
- The "Compression Level" label no longer appears twice in the Add To Zip dialog
- Double-clicks in List/Thumbs/Tiles mode no longer enter inline rename if the launched program did not take the focus
- Added options to the Listers / Options page in Preferences to control the opening position of the Default Lister. You can now choose to have the Default Lister always open in the same position, or always open under the mouse pointer, as well as the default behavior.
- Fixed formatting of {time} field in Advanced Rename
- Fixed problem with full-width spacers in toolbars when icon spacing set to >3
- Added "Favorites Add Dialog" command to the predefined command list
- The option to hide Lister footprints in the taskbar now works correctly
- The Opus control panel applets now work correctly
- Specifying the position and size for the Go NEW command now works. Additionally you can now specify *,* for the position to make the new Lister open under the mouse pointer.

- Fixed problem with conversion from Opus 8 config that could cause File type Info Tips and some other settings to be lost
- Fixed Zip Auto Extract by filename pattern
- The popup find field now appears over the top of the file display when in List mode and horizontal Tiles mode - this prevents the list items being rearranged when the field appears and disappears.
- Fixed problem that could cause corruption in My Computer and other virtual folders when using a config exported from Windows XP on a Vista machine
- Fixed problem with Tab Groups - when the first tab in a group was locked, and 'Close existing tabs' was selected, a new tab would be opened for the first locked tab instead of reusing an existing one
- The Copy WHENEXISTING=rename command now works correctly (previously it did the same thing as 'renameold')
- In Single Click mode, reduced the delay between a click and the action taking place (previously it used the system double-click time, now uses half the double-click time)
- Fixed delay on first file selection after a new tab has been opened
- Fixed problem with USB export on SanDisk Cruzer USB keys
- When performing a USB export over the top of an existing export, you are now given the option of upgrading the program files without overwriting the previously exported configuration
- Fixed problem with Advanced Rename dialog in regular expression mode, the text in the old/new name fields could change when dialog resized
- In Explorer Replacement mode, the 'Open folders in existing tab' option now causes a minimized Lister to be restored when the new tab opens
- Fixed rendering problem with icons in status bar and folder tabs when window title bar height set to non-standard size
- Fixed problem creating a new Microsoft Access document with Office 2003
- Fixed drag and drop from 7zip application

Version 9.0 -April 27th , 2007

Explorer Replacement changes

In order to support Explorer Replacement under Vista it has been necessary to change the way this mode is implemented. Previously ER was implemented by changing the default action of the HKEY_CLASSES_ROOT\Folder key. However, under Vista this is no longer effective - Vista seems to ignore this key when double-clicking on a folder.

Using HKCR did have some disadvantages under XP and 2000 as well - it made the Explorer Replacement setting global to all users (as HKCR is a common key), and it also meant that the user had to have administrator access to change the setting of this mode.

The new way of implementing ER mode is to add an "Open in DOpus" action to the HKEY_CURRENT_USER equivalent of HKCR (the exact key is HKEY_CURRENT_USER\Software\Classes\Folder). This is then set as the default action for the Folder file type. This method overcomes the problems with the previous method - it seems to be fully supported under Vista, and it makes Explorer Replacement a user-level setting instead of a global one.

The one slight difference discovered so far with this new method is that with ER mode enabled, double-clicking on a folder in ANY Explorer window will have the effect of opening in Opus. Previously, double-clicks only opened in Opus from the desktop - if you already had an Explorer window open and double-clicked on a folder in there it would read into the existing Explorer. Whether this is a problem or not I'm not sure - arguably we are replacing Explorer even more now :).

Under XP and older there is a new setting in Preferences/Misc/Advanced to revert to the old behavior of using HKEY_CLASSES_ROOT for Explorer Replacement mode.

New features

XML-based Configuration

In Directory Opus 8, most configuration information was kept in the registry – only Toolbars and some other settings were stored on disk. In Directory Opus 9, **all** configuration is now stored on disk in XML format.

The first time you run the new version of Directory Opus, a wizard will appear to prompt you through the conversion of your existing configuration to the new format.



The wizard lets you make a backup of your existing configuration before the conversion begins (this is recommended!). Note that the backup is exported in the Directory Opus 8 .dps format – so it is possible to go back to the previous version of the software and re-import this backup.

The conversion process will then proceed automatically, removing all registry data and creating XML files in its place. The XML files are stored in the following locations.

/dopusdata

e.g. C:\Documents and Settings\User\Application Data\GPSSoftware\Directory Opus.

This folder contains most user-configured data.

/dopuslocaldata

e.g. C:\Documents and Settings\User\Local Settings\Application Data\GPSSoftware\Directory Opus.

This folder contains user-configured data that is only relevant on the local machine (data in the Local Settings folder does not roam). This folder contains information like MRU lists, the recent list, and stored dialog positions.

/dopusglobaldata

e.g. C:\Documents and Settings\All Users\Application Data\GPSSoftware\Directory Opus.

This folder contains data that is global to all Directory Opus users on the system.

Note that whether your own Opus configuration is stored in **/dopusdata** or **/dopusglobaldata** is dependant on the choice you made when you installed Opus (and that you can change from Preferences) – whether you are using shared or private configuration files. The new XML configuration system means that this option is now more meaningful. Previously, if you selected shared configuration files, only the disk-based files like Toolbars were shared – each user still had their own private settings under HKEY_CURRENT_USER in the registry. With the new system, shared configuration means just that – your configuration files will be stored in **/dopusglobaldata**, which is common to all users on the system.

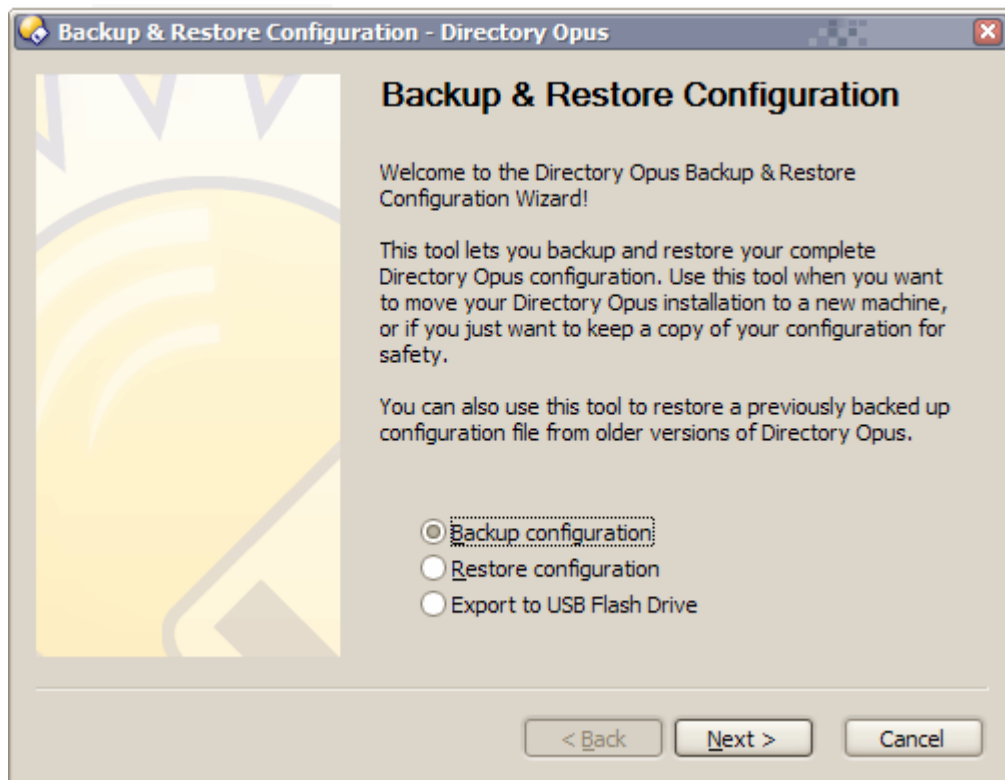
The configuration conversion process aims to convert your entire configuration completely to the new format. There should be no obvious change to your settings once the configuration is complete.

Note also that Directory Opus 9 still supports the old **.dps** and **.dpf** configuration export formats from previous versions. When you import one of these legacy configuration files, the information will be imported to the registry as before – however Opus will then shutdown, and when it restarts the configuration conversion process will begin automatically to convert the newly imported data to XML format.

Also associated with this, the format of exported Lister Themes has also changed to a purely XML-based one (previously it was a mix of XML and exported registry data). This means that Themes created in Opus 9 are not compatible with Directory Opus 8 – however, themes created in Opus 8 can still be imported into version 9.

New Configuration Backup & Restore System

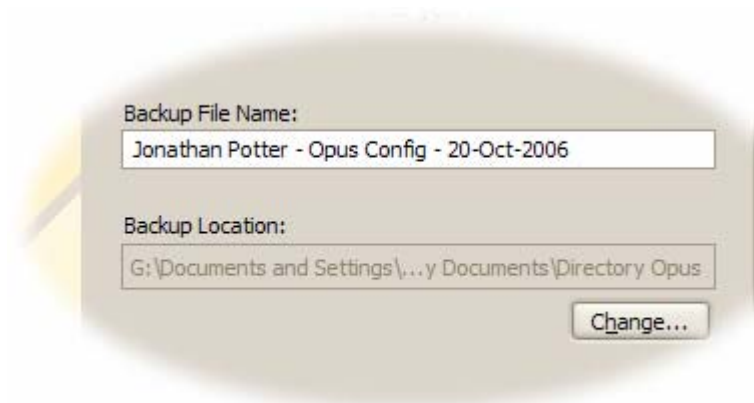
The old *Preferences Export & Import* dialog has been replaced with the *Backup & Restore Configuration Wizard*.

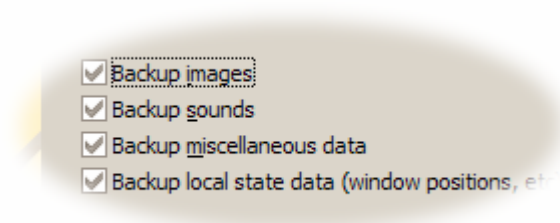


This dialog is the focal point of the configuration backup system in Directory Opus 9. It operates in three modes.

Backup configuration

Use this option to backup your configuration. Clicking Next takes you to the next screen where you can configure the name of the backup file. This is automatically filled in with a name generated from your user name and today's date. You can also specify the location for the backup file.



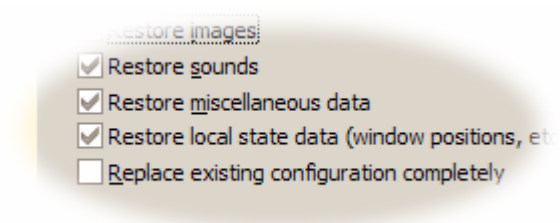


The next screen lets you choose which elements of your configuration you wish to include in the backup. This does not have the complexity of the old Directory Opus 8 system – there are only four choices to be made here. By default all your Preferences settings, Toolbars, Hotkeys, File Types and other important settings are included, and these can not be disabled.

The final screen in the backup process gives you the option of encrypting the backup file, and adding a description to the file. Note that the backup files created by Directory Opus 9 are **not** compatible with earlier versions of Directory Opus.

Restore configuration

The Restore process is very similar to the Backup process. You are asked to select the file to restore, and then given the same choices as in backup as to what to restore. Again, the important settings like Preferences, Toolbars, Hotkeys, File Types, etc are **always** restored.



One additional option in the restore process is *Replace existing configuration completely*. If this option is specified, all your existing configuration files will be deleted before the new configuration is imported.

Export to USB Flash Drive

The third mode of the Backup & Restore Configuration wizard is *Export to USB Flash Drive*. This option takes advantage of the disk-based nature of the new Opus configuration system, and allows you to export your Directory Opus installation (including program, certificate and configuration) to a USB flash drive. The program will then run as a self-contained entity from this flash drive on another system, without modifying the registry or hard drive of the host.



Select the USB drive that you wish to export to from the list given. Note that Opus supports both U3 devices and standard flash drives. The export of your program certificate is locked to the device that you export to. That is, it is not possible to copy the exported program from the USB device onto another computer and have it run – once it is exported to a device it will only run from that device.

The above image shows two USB devices, F: and M. In reality these are both the same device – a U3 drive. If you select the U3 icon, Opus will be exported as a U3 package and can be installed using the U3 LaunchPad software. If you select the standard USB device icon, Opus will be exported directly to the drive in non-U3 mode. Of course, if there was only a standard USB device present, the U3 icon would not be shown.

Next you must configure what optional components you wish to export. The first step is to choose which plugins you want exported – by default all are selected, but you can selectively disable some or all if you wish to save space on the target drive. Similarly, you can choose optional elements of your configuration that you do not wish to be exported.

The export will then proceed. If you are exporting for a U3 device Opus will prompt you for a location to save the **.u3p** package file. This package can then be installed to the device using the U3 LaunchPad software. If you are exporting for a non-U3 device, the files will be copied directly to the flash drive.

Sub-Collections

The File Collections system now supports sub-collections (that is, collections within collections). Creating a sub-collection is straight-forward – simply use the **CreateFolder** command to create a folder inside an existing collection.

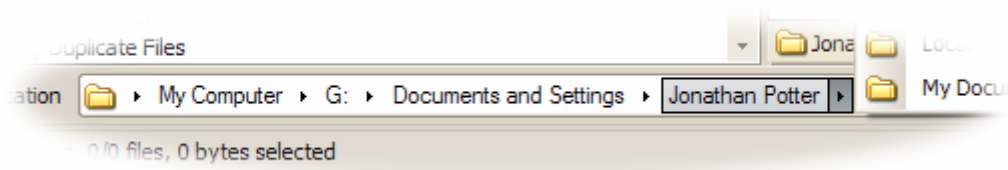
You can move files and folders between collections and sub-collections as normal – sub-collections behave exactly like collections.

When adding folders to a collection you are now asked if you wish to add them as collection members (the previous behavior), or as sub-collections. If you choose to add folders as members, the folder itself will appear in the collection, and double-clicking it will take you to the actual folder.

If you choose to add folders as sub-collections, then a new sub-collection will be created and the contents of that folder (including all sub-folders) will be added to the sub-collection.

There is an option in Preferences to define the default behavior of this.

Breadcrumbs-style Location Field



The “breadcrumbs”-style Path field is available in the commands list in Customize as Path Field (Breadcrumbs). It provides a hierarchical view of the current path, as you can see from the picture above. Each element in the path is a button that can be clicked to go immediately to that level of the path. Files can also be dropped on the elements. The arrows following each path element can also be clicked to display a popup menu of the contents of that folder.

If you click in the blank area to the right of the path then the breadcrumbs display will be replaced with a traditional path field allowing you to type in a path as before.

Several options exist for the Breadcrumbs location field to control the appearance (use these in the Args field):

- **driveroot** (this was in the previous beta but not documented) – omits the ‘My Computer’ branch from the field and goes straight to the root of the current drive.
- **mycomputericon** – displays the ‘My Computer’ branch as an icon instead of as text (takes up lots less space).
- **size=<arrow>+<folderleft>+<folderright>+<textleft>+<textright>** - lets you configure the size and spacing of items in the breadcrumbs display. The defaults are 13+1+4+4+4. For example, to reduce the size of the arrows by 4 pixels, specify **size=9**. The default values will be used for any omitted items (e.g. **size=++++1** would set ‘textright’ to 1 and all other values would remain as defaults).

Custom List View Code + Tiles Mode

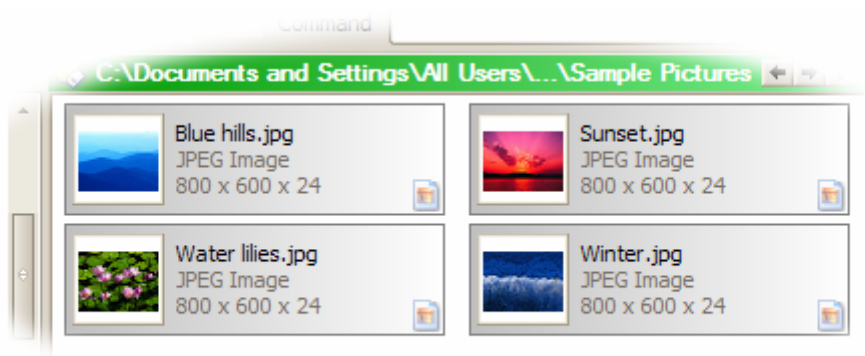
Directory Opus 8 used a system ListView32 control for the Lister display in the icon modes (large icons, small icons, list and thumbnails). This led to a number of problems – particularly, problems involving icon spacing and label wrapping in thumbnails mode, and strange scrolling problems in List mode.

Directory Opus 9 replaces the system control completely with a custom icon display. The four traditional icon modes are all still present, and for the most part should be indistinguishable from the previous version. However, the annoying bugs with the old icon modes should be gone, and the performance of the new code should be slightly improved.

The scrolling of Listers has also been improved greatly – scrolling with the mouse wheel is now accelerated, and details/power mode now have smooth scrolling which greatly enhances the effect of scrolling through Listers.

The custom list view code has also made possible the addition of a Tiles Mode. This is similar to the mode introduced in Explorer in Windows XP, but with a number of options not offered in Explorer.

To switch into Tiles mode, the command is **Set VIEW=Tiles**.

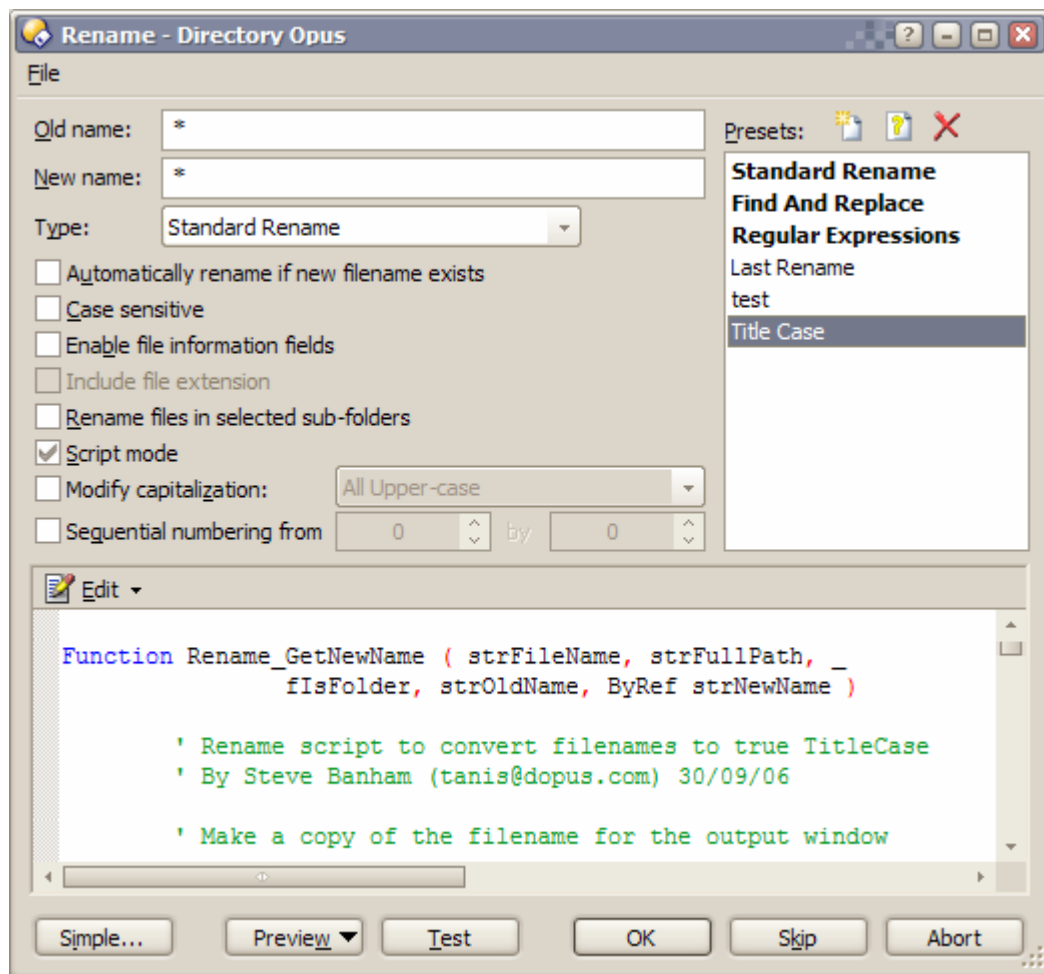


The default appearance of Tiles is slightly different than that in Explorer, although the principle remains the same. A large icon (or by default, a thumbnail) is shown to the left, with the name of the file and one or more configurable lines of information to the right.

The new Tiles Mode page in Preferences lets you configure the Tiles display completely. The size and spacing can be altered, as can the frames and background color of individual tiles (turn off frames and the background color altogether to emulate the look of tiles mode in Explorer). You can also choose whether or not thumbnails are shown in Tiles mode.

The information displayed beneath the filename can be configured on a per-file type basis through the File Types system (from the Advanced tab in the File Type Editor). This works much the same way as the Info Tip configuration system.

Advanced Rename Enhancements



The Advanced Rename dialog has had a number of improvements made.

Most noticeable is the addition of a *Script mode*. When this is enabled, a script panel appears which lets you define a script (VBScript/JScript/etc) to perform your own processing for the Rename operation.

The arguments passed to the script are:

- strFileName** – the original file name.
- strFullPath** - the full path of the file.
- flsFolder** – True if the item is a folder.
- strOldName** – the value of the Old name field in the Rename Dialog.
- strNewName** – the new name of the file.

When the script is invoked, **strNewName** will already contain the new name of the file as determined by the other settings in the Rename dialog. Your script function should place the modified filename in this variable.

Scripts are stored as part of Presets. Rename scripts can also be included in the body of buttons that invoke the Rename command on their first line.

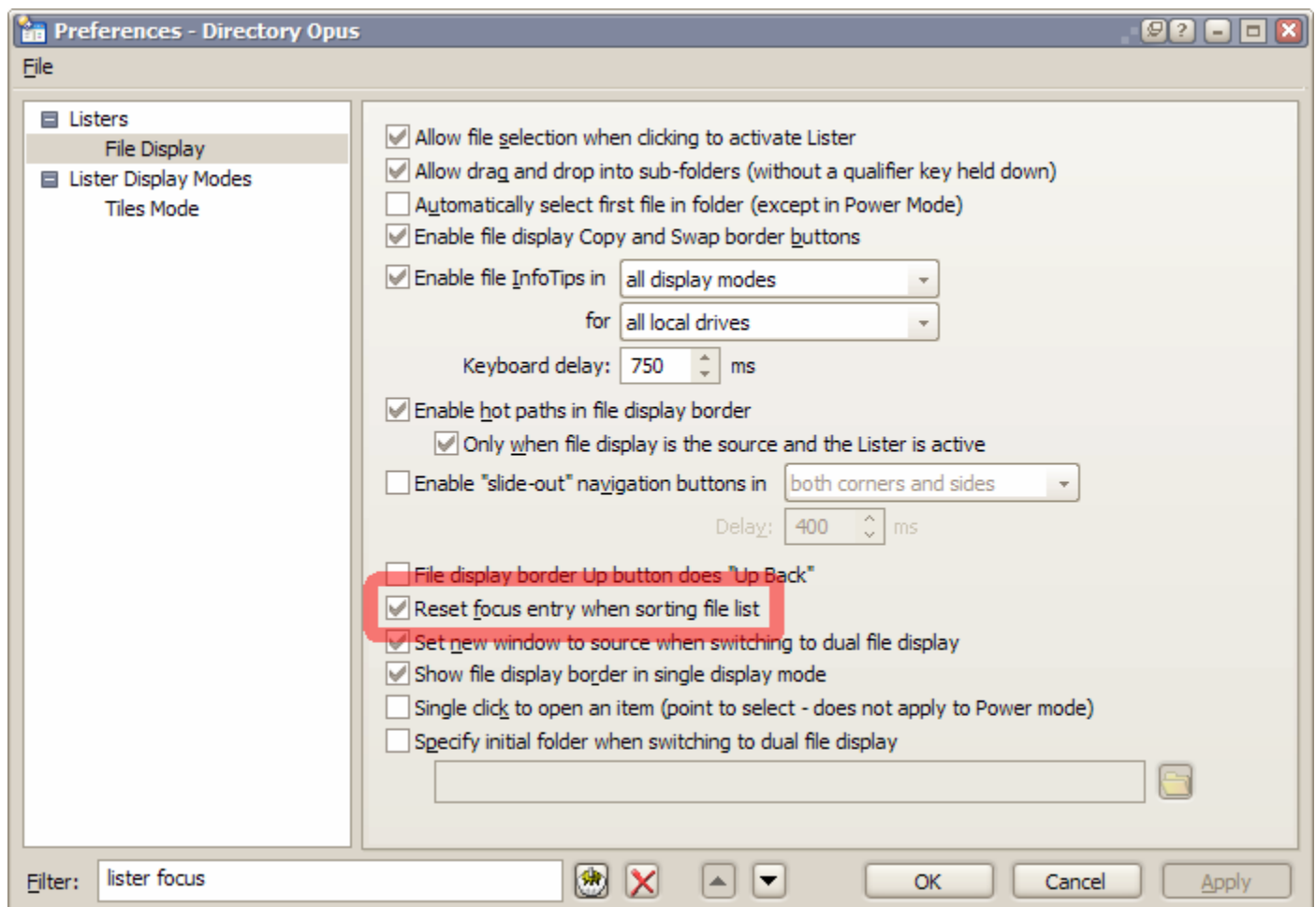
There is a new **Script** tab in the output window, which displays the output of any scripts (including error messages). You can direct your own output to this display using the **Dopus.OutputString** method in a script.

The Presets section in the Rename dialog has also had a small overhaul, with toolbar-style icons replacing the previously textual control buttons. The dialog also has a menu now which contains several commands, including Import & Export commands to make the sharing of Rename Presets easier. Also note the old *Test mode* option has been replaced by a *Test* button.

Preferences Editor Improvements

The Preferences editor has had a number of significant improvements. The most obvious is that the old List/Tabs interface has been replaced by a Tree. This makes it much easier to see which pages are available.

At the bottom of the Preferences dialog there is a new Filter field. This lets you search for Preferences items matching a specified string, making it much easier to locate items than before.



The red X button to the right of the Filter field lets you clear the filter, and the up and down arrows are provided to make it easier to step up and down through the Preferences pages.

While many of the Preferences pages are similar to those from Opus 8, there have been a large number of changes and improvements made.

You will notice that many dialogs which use the metaphor of a list together with several textual buttons (Add / Remove / Duplicate, etc) now use a toolbar-style button system. This results in space saving in the dialog, allowing the list control to be larger, and reduces the number of words on the page.

Overall the Preferences system is more logically laid-out and should be easier to use for both new and old users.

Briefly, the significant changes to Preferences are:

- **Display / Colors & Fonts**

The Lister preview has been removed, and the drop-down list replaced with a tree of color and font items.

- **Display / Images**

The “Color” settings have been removed from the Images page, as these were duplicated on the *Colors & Fonts* page anyway and only served to cause confusion. The page has been redesigned to be cleaner and easier to read.

- **Favorites / Favorites List**

Uses the new toolbar-style interface. Separators can now be added and removed like other items. A new *Edit Favorite* dialog is now used to configure favorites rather than the old *Select Folder* dialog. Also, SmartFavorites are no longer listed in the Favorites list. The old option to clear the SmartFavorites list has moved to the SmartFavorites page.

- **File Operations / Copying Files**

This page replaces both the *Copying (1)* and *Copying (2)* pages in Opus 8. The *Progress Bar* options that were on *Copying (2)* are now on their own page.

- **File Operations / Double-click on Files**

This page replaces the *Files* page in the old *Double-click* category (this category has been removed).

- **File Operations / Filters**

This is a new page which provides a nicer interface to configure and manage file filters (as used by the Select, Rename, Synchronize, Find and other recursive commands).

- **File Operations / Options**

This page used to be called *General*.

- **File Operations / Progress Indicators**

This page contains the *Progress Bar* options from the old *Copying (2)* page in Opus 8.

- **Folders / Options**

This page contains the *Prevent automatic loading of certain types of folders* options, which used to be in the old *Layout* section in Opus 8.

- **Launching Opus / Explorer Replacement**

The *Launching Opus* category is new in Opus 9, and brings together the options concerned with how Opus is launched – both the first time it is run, and subsequently how Listers are opened (note that to many users these two concepts are the same.) The *Explorer Replacement* page used to be in the *Miscellaneous* category.

- **Launching Opus / From the Desktop**

This page used to be listed under *Double-click / Desktop*.

- **Launching Opus / From the Taskbar icon**

This page used to be listed under *Double-click / Desktop*.

- **Launching Opus / Startup**

This page used to be on its own in its own category, but the new *Launching Opus* category is a more logical home for it.

- **Listers / Folder Tabs**

The *Tab Groups* section on the *Folder Tabs* page has been moved to its own page.

- **Listers / Folder Tab Groups**

This page contains the *Tab Groups* section that used to be on the *Folder Tabs* page. Rather than using a secondary dialog to edit the tabs within a group, the tabs within the selected group are displayed and can be edited from the main page itself.

- **Listers / Folder Tree**

This page has been redesigned to be neater and more logical. Several new options have also been added.

- **Listers / Layouts**

This page replaces the *Saved Layouts* page that used to be under the *Layout* category in Opus 8. The enormous monitor preview has gone, replaced with a tiny thumbnail. This means the Layouts list can be much larger and also allows room for several new Layout-specific options. As noted elsewhere, the Layouts can now be positioned arbitrarily and separators can be added.

- **Listers / Lister Styles**

The *Lister Styles* page is mostly unchanged except for the new toolbar-style controls and the addition of a couple of new options. It has moved to the *Listers* category from the old *Layout* category.

- **Lister Display Modes / Details Mode**

The *Lister Display Modes* category is new in Opus 9, and splits out the old *Power/Details Mode* and *Thumbnails* pages from the *Listers* category in Opus 8. The *Details Mode* page contains options that only apply to details mode – a new option is the ability to display grid lines.

- **Lister Display Modes / Power Mode**

Contains options that only apply to Power mode.

- **Lister Display Modes / Thumbnails Mode**

Contains options that only apply to Thumbnails mode.

- **Lister Display Modes / Tiles Mode**

This page is new in Opus 9, and contains options that only apply to the new Tiles Mode.

- **Miscellaneous / Advanced**

This page is new in Opus 9. It provides a “name/value pair”-style editor to configure several “advanced” options in Opus. Most of the options listed here existed in Opus 8 as semi-documented registry variables – the move to an XML-based config has necessitated the replacement of the registry variable system with a more formal one. They are now shown clearly here along with a description of each. Note that a couple of the options (related to Amiga icons) used to be available as “real” options in other Preferences pages, but have been moved here because of their relative obscurity.

- **Miscellaneous / Internet Settings**

This page replaces both the old *Miscellaneous / Email* page, and the *HTTP Proxy Server* settings from the *Miscellaneous / Miscellaneous* page in Opus 8.

- **Miscellaneous / Options**

This page used to be called *Miscellaneous / Miscellaneous*. Note that the HTTP Proxy settings have moved to the new *Internet Settings* page.

- **Photo Sharing / Flickr**

The *Photo Sharing* category is new in Opus 9, and contains options to configure the new photo sharing functionality. The *Flickr* page lets you configure one or more Flickr accounts to use with the new Flickr synchronization system.

- **Photo Sharing / ImageShack**

This page is new as well in Opus 9. It lets you configure the behavior of the new ImageShack Upload function.

- **Toolbars / Appearance**

This page has been redesigned slightly. When set to Office 2003 mode, it is now possible to completely configure the colors used for button highlighting. If not configured, the default colors generated from the specified base color are used. Note also that the options here to control the image highlighting effect are now the only place these are configured – the old per-button and per-toolbar settings for these have been removed.

Removal of Layout section in Preferences

As noted above, the old *Layout* section in Preferences has been removed. The *Prevent automatic loading of certain types of folders* options have moved to *Folders / Options*, and the *Lister Styles* and *Saved Layouts* tabs have been moved to the *Listers* section.

The other options in the old *Layout* section – namely, the default Lister settings (size, position, mode, default folders, and the “Inherit from the default Lister” options) have all been removed.

Instead of these options, there is now just the **Default Lister** concept. This concept existed in Opus 8 but it was always confused with the options in Preferences.

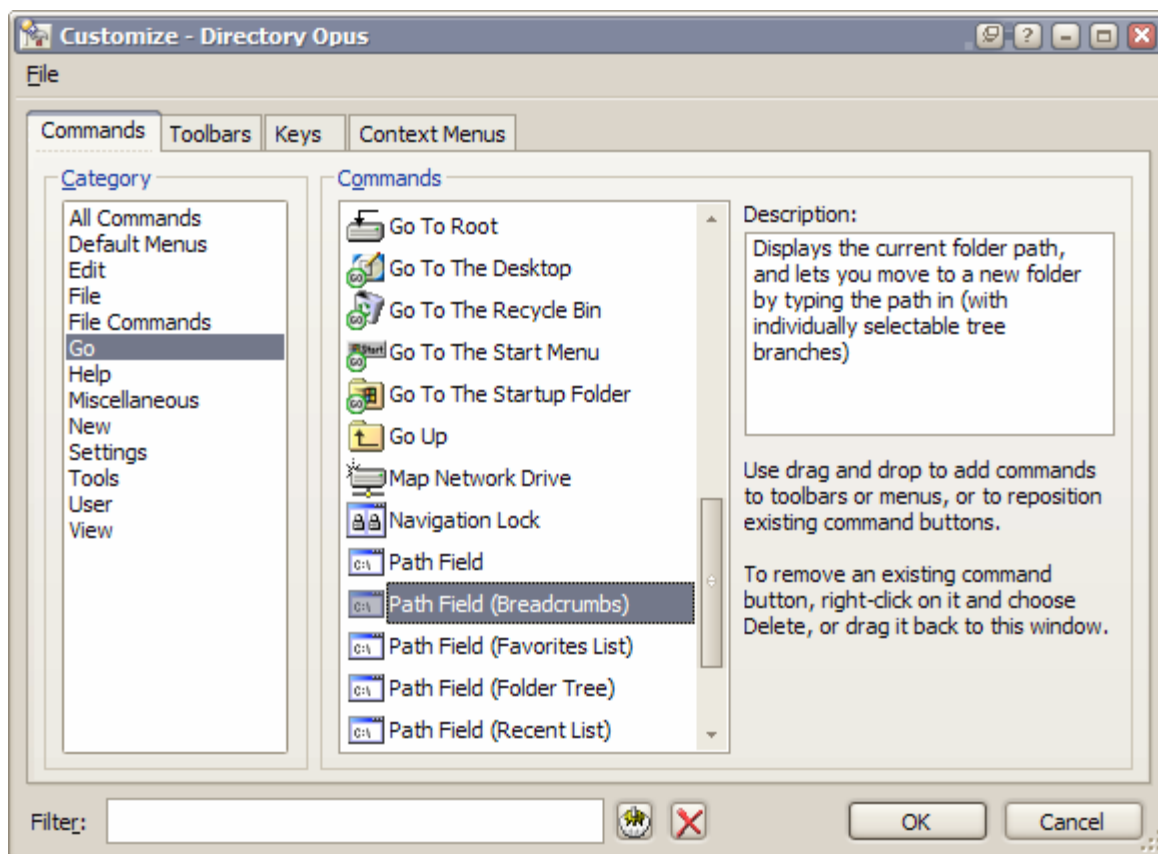
Behind the scenes, the Default Lister is just like a Saved Layout – except that it contains only one Lister, and it does not appear in the Layouts list. In all other respects it is exactly like a Layout and in fact is handled internally exactly the same way.

- When a new user runs Opus for the first time, the first Lister they get will use some hard-coded defaults. It will be approximately two-thirds the size of the screen, contain a tree and a dual file display, and will show the root of their system drive.
- As soon as the user closes that Lister, it becomes the Default Lister. Any changes they make to that Lister (in terms of size, position, viewer pane, trees, etc) will be remembered the next time they open a Lister. For users who only ever use one Lister and think of Opus as “The Lister”, it will be as if Opus is simply opening up in the last state they left it.
- Any time a Lister is opened other than via a saved Layout (with one proviso – the **Go NEW** command can optionally override Lister settings), the Default Lister is used.
- If the Default Lister is opened by double-clicking on the desktop, it is opened underneath the mouse pointer. In all other cases, it is opened in the same position as it was when it was closed, relative to the current monitor (the monitor containing the mouse pointer.) This is equivalent to the new Layouts option *Open layout relative to the monitor the mouse is currently on*.
- There are two options in Preferences under *Listers / Options* that control the behavior of the Default Lister.

- If *Ignore folder format of Default Lister* is enabled, the initial folder displayed in the Lister will use its default folder format, rather than the format that was saved with the Lister when it was last closed. This is equivalent to the new *Ignore folder formats saved within this layout* option in *Listers / Layouts*.
- If *Update Default Lister automatically when closing a Lister* is turned off, the Default Lister is not updated automatically when a Lister is closed. Instead, the Default Lister can be updated manually at any time using the command in the default Settings menu.
- If finer control over the opening of Listers is required than offered by the Default Lister concept, simply use a Saved Layout as before.
- Note that the old option in *Layout / Default Folders* to configure the default location of the second file display when it opens has been moved to *Listers / File Display*.

Although this may sound complicated, in reality the change from Opus 8 is subtle. The only options removed are the default Lister settings. The Default Lister concept existed previously, but it was confused by the presence of the default Lister options and the various “inherit” flags which controlled how the Default Lister interacted with the other settings. The new system removes all this confusion and gives the new user what they would generally expect – a program that remembers how you left it.

Customize Editor Improvements



The Customize dialog has been improved as well. Firstly, there is now a menu bar, the contents of which change depending on the current tab. In the *Commands* tab the menu contains Export and Import commands when the *User* command category is selected, providing a simple way of sharing User commands with others.

In the *Toolbars* tab, the menu contains commands to export and import toolbars. Similarly, in the *Keys* tab, there are commands to export and import hotkeys. When exporting hotkeys, you can choose to export in

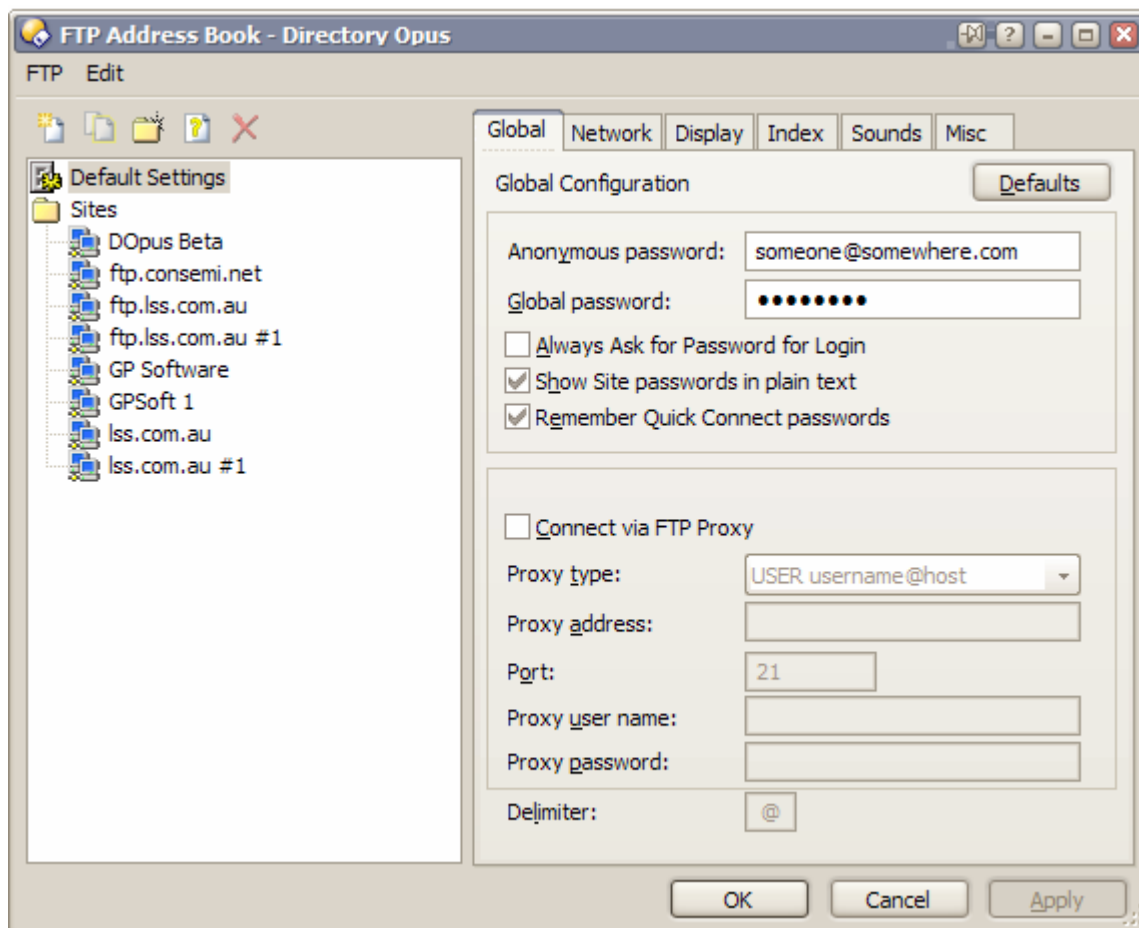
three forms – as an *Importable Hotkey* file (one that can be imported back into Opus), as a *Comma-Separated List* and as a *Text File*. The latter two formats are useful if, for example, you wish to print a list of your hotkeys.

The menu also contains an Undo command, as well as a command to save the current state of floating toolbars.

At the bottom of the Customize box is a *Filter* field, similar to the one in Preferences. This field is available on the *Commands* and *Keys* tabs. In the *Commands* tab it filters commands that are displayed in the list, and in the *Keys* tab it filters based on a hotkey you enter – this makes it very easy to locate the entry for a specific hotkey.

The *Toolbars* and *Keys* tabs are largely unchanged, except for the new toolbar-style icons replacing the old textual control buttons. In the *Keys* tab, a new type of hotkey field is used for the *Change Key* field (as well as for the *Filter* field). This field makes it easier to enter a hotkey, and now also lets you assign hotkeys to keys that previously could not be entered – for example, tab. To assign a hotkey to the tab key, click the drop-down arrow and choose Tab from the list. This new hotkey field is also used in the button editor.

FTP Address book



The *FTP* section of Preferences has been split out into a separate dialog– the *FTP Address book*. Having this separate has a number of advantages, the main one being that it is now resizable. Also, a menu has been added to make configuring the address book easier. The menu also contains Import & Export commands.

Flickr Synchronization

Opus now includes a Flickr Synchronization tool that makes it easy to keep your local photo collection in sync with your Flickr account.

Flickr Synchronization is based upon File Collections (this is one of the main uses for the new sub-collection ability). The premise behind the system is simple:

- Configure your Flickr account in Preferences. You will need to authorize Directory Opus to access your Flickr account (Opus will open the appropriate page in your web browser automatically.).
- A file collection is created representing your Flickr Account (by default this is listed under Flickr Photos\<account name> - e.g. coll://Flickr Photos/username – but this can be changed from Preferences).
- A local disk folder is designated as the default storage for photos downloaded from Flickr.
- To upload photos to Flickr, simply add them to the file collection. Note that you can leave the photos in their original locations – they do not need to be placed in the default storage folder. Simply add them to the collection as with other files.
- If you wish to place images in a Photo set, create a sub-collection with the appropriate name and add the photos as desired. You can place the same photo in multiple sets by adding it to multiple sub-collections.
- Perform the synchronize. The easiest way to initiate this is by right-clicking the 'username' collection in the tree and choosing *Synchronize with Flickr*.
- You have the option of one or two-way synchronization. Opus will contact Flickr and try to establish which photos need to be uploaded and downloaded (or only one if one-way synchronization is selected).
- Photos that are in your file collection that do not exist on Flickr will be uploaded, and optionally assigned to any photo sets you have placed them in.
- Photos that are on Flickr that do not exist in your file collection will be downloaded to the default storage location, and placed in the appropriate collection (and sub-collections if they are in a Photo set).

The idea is that your Flickr File Collection will exactly represent your Flickr account.

Note that there are a number of additional details in this process, which are currently not documented in great detail. For example,.

- If Opus finds a photo on Flickr that it cannot find in your collection, it will try to locate the image in the default storage folder before downloading it. Because Flickr does not store the original filename with uploaded images, Opus uses the EXIF shooting time to locate images (so obviously this only works with JPEG photos that contain this data). If Opus cannot find the file itself it will prompt you to locate it – at this point you can ask Opus to search other folders for the image, or you can tell Opus which file corresponds to the image. You can also tell Opus to ignore an image on Flickr. Finally, if all these steps fail, Opus will download the image and add it to your collection. If you do not want Opus to go through all these steps, turn off the *Identify missing local files on upload* option in Preferences.
- Opus will automatically create sub-collections for your Photo sets the first time it contacts Flickr. If you only wish synchronization to occur with a sub-set of your photo sets, you can turn off individual sets through Preferences.
- Opus will automatically create sub-collections for any Pools that you are a member of, and you can upload images to pools by placing them in these sub-collections the same as for Photo sets.
- You are given the option to assign tags, resize and set privacy options for photos when you upload them. You can also configure default settings for these in Preferences.
- You can reassign photos to photo sets and pools without re-uploading them by simply dragging them from one file collection to another. Or, to remove a photo from a photo set but leave it on Flickr, move it from the sub-collection to the parent collection.

The raw command to initiate Flickr Synchronization is **Image SYNCPHOTOS=flickr**.

The Flickr Preferences page also has a checkbox which lets you disable the synchronization system for an account. If this is turned off, the Synchronize function will be unavailable, but you will still be able to use Opus to upload images using the **Image UPLOAD=flickr** command (not yet implemented.).

Please note that Flickr is a third-party service and is not affiliated with GPSoftware in any way.

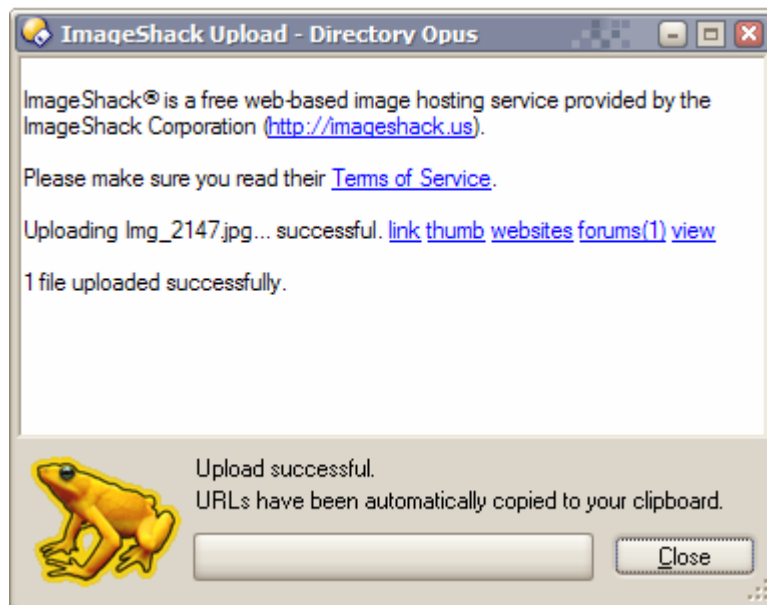
ImageShack Image Upload

Directory Opus now features a built-in ImageShack upload utility. ImageShack is an image hosting service that (with some obvious exceptions) lets you upload and host any image for free.

The raw command to initiate ImageShack upload is **Image UPLOAD=imageshack**. There is also an *Upload to ImageShack* command in Customize.

To upload images, simply select them and run the command. Note that ImageShack has some limitations on the size and format of images that can be uploaded, and the upload tool will inform you if any selected images can not be uploaded.

The upload will begin immediately. Note that unlike Flickr, you do not need to configure an account before using ImageShack.



When the upload is complete, a number of links for the image are displayed. Clicking one of these links puts the appropriate URL in the clipboard, from where you can paste it into an email / web forum / etc. By default, a direct link to the uploaded image is put into your clipboard automatically.

The *Photo Sharing / ImageShack* section in Preferences contains a number of options to control the links that are provided. By default, only a direct link to the image and a link to the thumbnail image are shown (in the above screenshot, these are "link" and "thumb"). Through Preferences you can also enable various other forms of links to the image – several pre-defined forms and also a custom-configured link. You can also choose which form of link is placed automatically into the clipboard.

The Preferences page also lets you configure a registered account to use. Although ImageShack does not require an account, you are able to register, and any images uploaded under your registered account can be retrieved later even if you have lost the links to them.

Please note that ImageShack is a third-party service and is not affiliated with GPSoftware in any way.

Command Parser Improvements

The command parser in Opus has been significantly improved. Perhaps the biggest change is that **all** the control sequences (like **{file}** etc) can now be used with the internal command set, without resorting to dopusrt tricks.

Several problems with the automatic quoting of filenames containing spaces have been fixed. There should be no need now to resort to the **@nofilenamequoting** directive to fix problems with automatic quoting – the parser should now be smart enough to add quotes correctly.

Additionally, support for complicated multiple line functions has also been improved. For the most part, mixing internal and external commands now works as you would expect – again, without the use of `dopusr`. Previously when mixing internal commands and external functions in a Batch mode function, the generated batch file would not be run until the very end of the function, whereas internal commands were executed when they were encountered. In the new version, the batch file is now automatically run whenever an internal command is encountered, making the execution order more logical.

There are a number of new control sequences:

- **{dlgpassword} / {Rp}**

This is the equivalent of **{dlgstring}** except that the text field will hide the input string. This command takes the same parameters as **{dlgstring}**.

- **{dlgchoose} / {Rc}**.

This command displays a dialog with a drop-down list letting you select an option from those supplied. The value of the option is then inserted into the function. The format of this command is:

{dlgchoose|<Message>|<Option 1>[=<Value 1>][+<Option 2>[=<Value 2>]...]}.

<Message> is the text displayed in the dialog.

<Option 1> is the text displayed for the first option in the drop-down list. If you wish to specify a value for an option, use the form <Option>=<Value>, otherwise the value inserted in the string will be the ordinal number of the option. Multiple options can be added together with the + sign. For example,.

{dlgchoose|Select encoding quality|High=320+Medium=256+Low=128+Very Low=64}.

- **{dateu} / {timeu}**

These two commands are identical to **{date}** and **{time}** except they supply the time in UTC instead of local time.

- **{leftpath} / {l} / {leftpathshort} / {ls}**

This command inserts the path of the left-hand file display, irrespective of the source or destination status.

- **{rightpath} / {r} / {rightpathshort} / {rs}**

This command inserts the path of the right-hand file display, irrespective of the source or destination status.

- **{}**

The **{}** command is used to insert the value of a temporary variable that has been set by the **@set** directive. For example, **{svar}** would insert the value of the **var** variable.

There are also several new modifiers for the **{file}** command (and associated commands):.

- **file / filem**

This modifies the **{file}** commands to redirect the file name or names to a temporary file. This is useful with external commands that can take a list of files from a text file rather than on the command line. For example, **{allfilepath}** adds the full paths of all selected files to the command line. However, if you specify **{allfilepath|filem}**, a temporary file is created and the names of all selected files are written to that file. It is then the path of the temporary file that is added to the command line.

Use **file** to have all filenames written on a single line (separated by spaces), and **filem** to have filenames written on multiple lines (separated by `cr/lf`).

- . and \

The . modifier lets you insert the name of the parent folder of selected files. For example, with a file called `C:\Data\Letters\MyLetter.doc` - **{file}** would insert `C:\Data\Letters\MyLetter.doc` and **{file|.}** would insert `C:\Data\Letters`. You can also specify multiple parent levels, e.g. **{file|.|.}** would insert `C:\Data`. Finally, \ lets you specify the root folder – in the previous example, **{file|\}** would insert `C:\`.

There are also a number of new @ directives to modify the behavior of commands:.

- **@confirm [<message>[|<positive text>[|<negative text>]]]**

This directive displays a confirmation dialog. If the negative choice in the dialog is chosen, the function is aborted at this point. You can configure the message and the button text displayed – if not specified, default strings are used. For example,

```
@confirm Really copy files?
@confirm Really proceed?|Of Course|No way.
```

- **@externalonly**

If this directive is specified, the Opus internal commands will be ignored in this function. This lets you configure an MS-DOS batch function using commands like **copy** which normally would be overridden by the internal command set.

- **@noexpandenv**

If specified, this directive prevents Opus from expanding any environment variables present in the function.

- **@set <name>=<value>**

This directive lets you set variables that can be used by the remainder of the function. The variables defined by the **@set** command can be referred to in any other command using the **{\$}** control sequence. This command is most useful in the situation where the value is defined by a **{dlgstring}** or similar Opus function. For example,

```
@set dir = {dlgstring|Enter new folder name to copy files to}
createfolder “.{dir}”
copy to “.{dir}”
```

- **@runonce:<command>**

Insert the **@runonce:** directive before another command to have that command only run once per-function instead of once per file.

- **@runbatch**

In an MS-DOS Batch function, you can add the **@runbatch** directive at any point where you want the batch file execution to take place. Normally Opus writes all lines to the batch file, and then executes the batch file as the very last stage. In the new version, Opus also executes the batch file whenever an internal command is encountered. Using the **@runbatch** directive you can control when the batch file executes – you can even use this directive multiple times to split the function up into multiple batch executions.

- **@norunbatch**

Use this directive to disable the new behavior when mixing internal and external commands in a Batch-mode function. Opus will revert to the previous behavior of running internal commands when they are encountered and executing the batch file as the very last stage. Note that you can mix **@norunbatch** and **@runbatch** if desired.

- **@keydown:<qualifiers>**

The **@keydown** directive lets you change the behavior of a button depending on the qualifier key state when the button is executed. For example, a button could be defined to normally select all files, but to toggle the selection when shift is held down, and to clear the selection when control is held down:

```
@keydown:none
select all
@keydown:shift
select invert
@keydown:ctrl
select none
```

All lines following an **@keydown** directive (up until another **@keydown** is encountered) are ignored if the specified qualifiers do not match. The valid qualifiers are **none**, **shift**, **ctrl**, **alt** as well as combinations such as **shiftctrl** etc. Note that instructions at the top of a command are valid for all qualifiers – it is only when the first **@keydown** directive is encountered that special processing begins. You can also use **@keydown:common** to specify instructions that are common to all qualifiers at the end of the function. For example,

```
select all
@keydown:none
copy
@keydown:shift
copy move
@keydown:common
delete
```

This function would select all files, then either copy or move them depending on the state of the shift key, and then finally delete the originals.

Note that while **alt** is supported as a qualifier, alt-clicking a toolbar button normally invokes Customize mode. If you wish to use the alt key in this way you will need to turn off the *Alt-Click to edit Toolbar buttons* option in Preferences.

- **@script <type>**

The **@script** directive is used to include a script in a button. For example, it is possible to define a button that runs the Rename command, and then specify a script following the Rename command to perform additional processing on the operation.

Also note that the **sync:**, **runmode** and **nocall:** directives are now also implemented as **@sync:** and **@nocall:** for consistency with the other directives.

Internal Command Changes

Below is a list of the new arguments for the internal command set.

Clipboard

- **AS/K**

The **AS** argument can be used when pasting images or text to disk. It lets you override the default filename used in these cases (*Clipboard Image / Clipboard Text*).

- **COPYNAMES/O [<full>,nopath,url,hash,hash2,hash3,unc,short,single,path]**

The new arguments are **hash3**, **single** and **path**. Use **hash3** to copy the MD5 checksums only, without the names of selected files. If **single** is specified and multiple files are selected, the filenames are copied to the clipboard on a single line separated by spaces, rather than one name per line as is the default. The **path** argument will copy the source path to the clipboard, ignoring any selected files.

- **PASTE/O [jpg,png,gif,bmp]**

The **PASTE** argument can now take a format that is used when pasting a clipboard image as a disk file. Specifying this argument overrides the default setting in Preferences. The JPEG quality can be set – for example, **Clipboard PASTE jpg:85**.

- **SET/K/R**

The **SET** argument lets you copy arbitrary text to the clipboard. The **/R** modifier is new to Opus 9 and indicates a **raw** argument. When the **SET** argument is given, **all** subsequent text on the command line becomes part of the argument value, including any spaces and quotes.

Close

- **ALLVIEWERS/S**

Close all open Viewer windows.

Copy

- **BUFSIZE/K/N**

This lets you override the buffer size setting in Preferences. The buffer size is specified in **bytes** (rather than kilobytes as is the Preferences option).

- **CLEARREADONLY/K [yes,no]**

This lets you override the state of the *Clear read-only flag when copying from CDs* option in Preferences. If not specified, the Preferences setting is used.

- **COPYATTR/K [yes,no]**

This lets you override the state of the *Preserve the attributes of copied files* option in Preferences.

- **COPYCREATIONTIME/K [yes,no]**

This lets you specify whether the creation time is preserved when copying files. The default behavior is to copy the creation time, but this can be disabled via this option or via an option in the *Miscellaneous / Advanced* section in Preferences.

- **COPYDESC/K [yes,no]**

This lets you override the setting of the *Preserve the descriptions of copied files* option in Preferences.

- **COPYDIRDATES/K [yes,no]**

This lets you specify whether folder timestamps are preserved when copying files. The default behavior is to copy folder timestamps, but this can be disabled via this option or via an option in the *Miscellaneous / Advanced* section in Preferences.

- **COPYPROPERTIES/K [yes,no]**

This lets you override the state of the *Copy NTFS file properties* option in Preferences. If not specified, the Preferences setting is used.

- **COPYSECURITY/K [yes,no]**

This lets you override the state of the *Copy security permissions* option in Preferences. If not specified, the Preferences setting is used.

- **COPYTIME/K [yes,no]**

This lets you override the setting of the *Preserve the timestamps of copied files* option in Preferences.

- **COPYTOCOLL/K [member,sub,ask]**

This lets you override the state of the *When copying folders to a collection* option in Preferences.

- **FLATVIEWCOPY/K [single,recreate,ask]**

This lets you override the state of the *When copying in Flat View mode* option in Preferences.

- **MAKEDESTARCHIVE/K [yes,no]**

This lets you override the state of the *Mark copied files as archived option* in Preferences.

- **MAKESOURCEARCHIVE/K [yes,no]**

This lets you override the state of the *Mark original files as archived after being copied* flag in Preferences.

- **UPDATESECURITY/K [yes,no]**

This lets you override the state of the *Update permissions and encryption settings to match the destination when moving files* option.

- **WHENEXISTS/O [<default>,ask,skip,replace,rename,renameold,resume]**

The new argument is **renameold**. Specifying this argument will cause the original (existing) files to be renamed when the copied files already exist (contrast with the **rename** option which causes the new files to be renamed).

Favorites

- **ADDIALOG/S**

This command lets you add the current folder to the Favorites list – it is similar to the **ADD** option but displays a dialog first letting you edit the name of the new Favorite entry and optionally specify a sub-folder to add it to.

- **NOLABEL/S**

Specify this command to prevent the generated Favorites List from displaying labels.

- **USEQUALKEYS/S**

When this argument is specified, the **Favorites** command automatically reacts to the control/shift/alt keys being held down to perform the default action for that key (control = open in dual, shift = new Lister, alt = new tab).

- **KEYARGS/K/M**

This option lets you specify multiple sets of arguments that are only applied if certain key combinations are held down when the function is executed. See the **Go** command for more information.

Find

- **ADVANCED/S**

Forces the Find dialog to open in advanced mode.

- **SIMPLE/S**

Forces the Find dialog to open in simple mode.

Go

- **BACKLIST/O [<normal>,noicons,keys,sort]**

The new argument is **sort** and specifies that the “back” history list should be sorted alphabetically rather than in chronological order.

- **FOLDERCONTENT/O [button, norecurse, nodirs, nofiles, showhidden, noparselinks, showempty, filefilter=, dirfilter=, maxdepth=]**

This command makes it possible to display the contents of a disk folder dynamically in a menu. The optional parameters for this argument are:

button – specify this parameter to cause sub-folders to be displayed as menu buttons. Clicking the button part will read that folder, expanding the drop-down will display the sub-folder contents.

norecurse – do not recursively display sub-folders

nodirs – exclude folders from the list

nofiles – exclude files from the list

showhidden – include hidden files in the list

noparselinks – do not resolve file links

showempty – includes empty folders in the list

filefilter=<pattern> - wildcard pattern to match files

dirfilter=<pattern> - wildcard pattern to match folders

maxdepth=<depth> - maximum recursion depth.

- **FORWARDLIST/O [<normal>,noicons,keys,sort]**

The new argument is **sort** and specifies that the “forwards” history list should be sorted alphabetically rather than in chronological order.

- **HISTORYLIST/O [<normal>,noicons,keys,sort]**

The new argument is **sort** and specifies that the history list should be sorted alphabetically rather than in chronological order.

- **KEYARGS/K/M**

This option lets you specify multiple sets of arguments that are only applied if certain key combinations are held down when the function is executed. Note that **KEYARGS** is a **/M** option and so can take multiple input. For example,

Go C:\ KEYARGS ctrl:NEW “shift:NEWTAB=findexisting” ctrlshift:NEWTAB.

- **PATH**

When used with the **FOLDERCONTENT** argument, the **PATH** argument can take multiple paths separated by vertical bars (|), to combine the list of multiple directories into one.

- **TABLOCK/K [lock,lockchanges,off,toggle]**

Change the locked state of the current tab. Specify **lock** to lock the tab against any folder changes, or

lockchanges to allow folder changes but revert to the original directory when the tab is hidden and then revealed. Combine with the **toggle** parameter to toggle the defined locking behavior. Specify **off** to unlock the tab.

- **TABUNDOCLOSE/S**

Reopens the last tab or tabs to be closed.

- **USEQUALKEYS/S**

When this argument is specified, the **Go** command automatically reacts to the control/shift/alt keys being held down to perform the default action for that key (control = open in dual, shift = new Lister, alt = new tab).

- **VIEW/K [largeicons,smallicons,list,details,power,thumbnails,tiles]**

The new argument is **tiles** and sets the display of the new folder into Tiles mode.

Image

- **FLICKRACCOUNT/K**

Specify the Flickr account to synchronize (by default, all configured accounts are synchronized.).

- **FROM/M**

Use the **FROM** argument to specify the image file or files to be converted or uploaded.

- **LOCATE/K [googleearth]**

Locate the real-world location of the selected image file from embedded GPS information. Currently the only location method defined is **googleearth** (which means Google Earth software must be installed for this to work.).

- **SYNCPHOTOS/K [flickr]**

Initiate online photo synchronization. Currently the only supported method is **flickr**. Use in conjunction with the **FLICKRACCOUNT** parameter to specify the account to synchronize.

- **PERCENT/K/N**

When resizing images you can use the **PERCENT** argument to specify the new size as a percentage of the old one.

- **UPLOAD/K [imageshack,flickr]**

Upload selected images to an online photo sharing service. Currently supported are **imageshack** and **flickr** (Flickr simple upload not yet implemented).

Join

- **HERE/S**

Specifies that the joined file is to be written to the source folder instead of the destination.

Set

- **AUTOSIZECOLUMNS/O [<source>,dest,left,right,both,focus,widest]**

The new options let you specify which side of a dual display Lister is auto-sized. The default is for the source Lister, but you can specify the other parameters to change this. Specify **both** to have both sides auto-sized – if you specify **widest**, the two sides will be set to the same size (that of the widest size.).

- **FORMATLOCK/K [on,off,toggle,left,right,source,dest]**

The new options are **left**, **right**, **source** and **dest**. They let you apply the format lock to only one side of a dual-display Lister.

- **ICONS/K [on,off,toggle,reset]**

This command lets you toggle the display of icons in Power/Details mode on or off. This overrides the option in Preferences for power mode, and applies to the current file display until the command is run again. Specify **reset** to reset to the default behavior (which is icons on in details, and in Power mode subject to the Preferences setting.).

- **KEEPFOLDERSALPHA/K [on,off,toggle]**

This command lets you modify the state of the *Keep folders sorted alphabetically* Folder Options setting.

- **LISTERCMD/K [minimize, maximize, restore, showall, minimizeall, tileh, tilev, cascade, toggleminimizeall]**

The new argument is **toggleminimizeall**. This command will minimize all open Listers, or restore them if they are already minimized.

- **SORTREVERSE/K [on,off,toggle,togglesmart]**

This is useful in conjunction with the **SORTBY** parameter. If the field specified by the **SORTBY** parameter is already sorted, then the **SORTREVERSE** will take effect (reversing the sort order). If, however, the sort field has to change, then the reverse parameter will be ignored.

- **VIEW/K [largeicons,smallicons,list,details,power,thumbnails,tiles,cycle]**

The new argument is **tiles** and will set the display in the current Lister into Tiles mode.

- **VIEWFILTER/O**

This command lets you apply a temporary filter to the current file display. This filter is applied after those in the current folder format, and does not affect those filters at all. It is cleared automatically whenever the folder is changed.

.

SetAttr.

- **ATTR/K / SETATTR/K / CLEARATTR/K / TOGGLEATTR/K**

The attribute arguments now accept **e** and **c** as valid attributes to modify (on NTFS drives only) – **e** means encrypted, and **c** means compressed.

- **FILE/M**

This argument lets you specify the file or files whose attributes are to be altered.

- **MODIFIED/K / CREATED/K**

These arguments can now accept the date/time string in the format **yyyy-mm-dd hh:mm:ss** as well as **yyyymmdd**.

Prefs

- **BACKUPRESTORE/S**

Initiates the Configuration Backup & Restore Wizard. Note that the old **IMPORTEXPOR**T argument still works, and does the same thing – although it is not listed in the command template. The other arguments to do with importing and exporting configuration no longer exist.

- **STYLELIST/O [<default>,showprevious]**

By default the style list (and tabs) no longer includes the “Previous” style. Specify the **showprevious** parameter to revert to the old behavior.

Recent

- **NOLABEL/S**

Specify this command to prevent the generated Recent List from displaying labels.

- **USEQUALKEYS/S**

When this argument is specified, the **Recent** command automatically reacts to the control/shift/alt keys being held down to perform the default action for that key (control = open in dual, shift = new Lister, alt = new tab).

- **KEYARGS/K/M**

This option lets you specify multiple sets of arguments that are only applied if certain key combinations are held down when the function is executed. See the **Go** command for more information.

Split

- **FROM/M**

Specifies the files to be split.

- **HERE/S**

Specifies that the split files are to be written to the source folder instead of the destination.

- **TO/K/D**

Specify an alternative output location for the split files.

- **SIZE/K**

Specify the size of the split chunks (e.g. “1000 bytes”, “32 k”, etc).

- **UUENCODE/S**

Specify that the split files are to be uuencoded.

Other Changes and Notes

- The help system has now been updated to use HTML help and as such works again under Vista.
- Mobile Devices now work within Listers.
- If running in USB mode on a computer that has not had Opus installed, attempting to access UAC (e.g. Admin mode) now displays a prompt to register the UAC helper component.
- Install Font now works under Vista.
- Briefcase is now displayed in the Shell New menu.
- The File type editor now supports UAC and prompts for elevation when trying to edit global file types.
- Owner-draw combos such as those used in the Prefs/Lister Styles and Prefs/Images pages now render properly themed under Vista.
- Added support for "Compatibility Files" - under Vista, writes by legacy software to protected folders like Windows and Program Files are redirected to the user's Virtual Store. Explorer displays a "Compatibility Files" button when in these locations which takes you to the virtual store. Opus now supports this system in two ways:

- Go COMPATIBILITYFILES

This command mimics the Explorer function, and takes you to the virtual store corresponding to the current folder. If you add this button to your toolbar (it is also in the Commands list in Customize), the button will only be visible when in a location that has a virtual store counterpart.

- Show compatibility files via Folder Options

Using this option causes the contents of the virtual store to be added to the display of the directory (similar to the way Flat View shows the contents of multiple folders simultaneously). Notes regarding this:.

- There is a Preferences setting in Folders/Options to turn this mode on by default.
 - It can be controlled on a per-folder basis using Folder Options.
 - The Set SHOWCOMPATIBILITYFILES command exists to control this mode via a button or hotkey.
 - The color of compatibility files/folders can be configured via Preferences/Display.
- Support for UAC in Vista. Note that UAC support in Opus is better than in Explorer. For example, in Explorer if you create a new folder in a protected location (like Program Files), and then rename the newly created folder, you will get four separate confirmation dialogs. In Opus, you will just get one.
 - To go along with UAC support is the new Lister "Administrator Mode". This command puts the Lister in an "automatic UAC" mode - you must approve UAC once, and then after that the Lister will not prompt you for UAC permission again until Admin mode is cancelled. Admin mode automatically cancels itself after a definable timeout, or you can turn it off again manually. Note that when in Admin mode all external programs launched from the Lister also launch with elevated permissions.

The raw command for Admin Mode is Set ADMIN=Toggle (or "on" or "off"). By default a dialog is displayed that lets you specify the timeout - if you wish to prevent the dialog appearing you can specify the toggle yourself on the command line (e.g. Set ADMIN=Toggle,10 for a 10 minute timeout.) There is also a predefined command in the Tools category of Customize.

- There is a new @admin: command prefix to allow you to start external programs elevated from within Opus. For example, to make a button that launches Notepad with admin permissions, set the function to @admin:notepad.exe. You can also put @admin by itself on a line in the function to make the whole function (or rather, all commands that launch external programs from the function) run with elevated permissions. Note that you will get a UAC prompt as normal, unless the Lister is in Admin Mode.
- Explorer Replacement mode now works for Vista - see below.

- The two control panel applets now work under Vista.
- Fixed a problem with special folders (like Documents) in the tree under Vista. Previously if you created a sub-folder these folders would stop working until the tree was closed and re-opened.
- The File -> New menu in the Lister menu was not rendered properly for virtual folders like the Desktop.
- The "Run as administrator" command on the context menu of program files now appears and works correctly.
- Changes made to the default program for opening a file by the Open With command are now persistent.
- The pin & zoom buttons are now disabled completely on Vista when Aero (either Glass or Basic) is selected. The functionality provided by these two buttons is now available from the window menu (click on the icon in the top-left corner of the window).
- All Opus dialogs now display in Segoe UI under Vista.
- Opus has a new "search-as-you-type" field (similar to the one in Firefox) in Listers and in the text viewer. When you begin typing in a Lister a search box now appears at the bottom showing you what you are searching for. Scrolling to the item in the Lister still happens as before - the method is the same, only the interface has changed. The search field turns red if there is no match.
- The way Opus handles Double-click on the desktop has changed. Opus now runs a background copy of dopusrt.exe as the double-click handler. If you turn on desktop double-click support, Opus will add this command to your registry to start automatically. The advantage of this method is that double-click on the desktop now works even when Opus itself is not running. To go along with this there is a new option in Prefs / Launching Opus / Startup called "Shutdown Directory Opus when the last Lister closes". If this option is turned on then Opus will automatically quit itself when no Listers remain open. Double-clicking the desktop would then automatically launch Opus again.
- There are a new options in Prefs / Launching Opus / From the Desktop and From the Taskbar icon called "Bring the last active Lister to the front". If this is selected then the double-click effectively runs the "Go LASTACTIVELISTER" command. If no Listers are currently open then the Default Lister is opened.
- The appearance of the buttons in the inner file display border has changed on XP/Vista when visual styles are enabled. The buttons are no longer rendered in the "old fashioned" 3d style but instead appear flat and display a themed button when the mouse is over them.
- Added @filesonly and @dirsonly command directives to allow a command to specify that it operates only on files or on directories.
- Fixed a problem with Find searching the wrong folder if a folder is dropped onto the Find window.
- Opus now scales greyscale images (8 bit and 1 bit) using a new anti-aliasing scaling routine that should be faster and give better results than before. Also fixed a problem with 8 bit JPG images displaying black thumbnails.
- Fixed a problem with folder tabs where changing from one tab to another would not shift focus from the now-hidden tab to the newly revealed tab. This had the by-product that pressing F2 to enter inline rename mode would initiate inline rename in the hidden window.
- Fixed the case where it was possible to trigger two conflicting GetSizes threads simultaneously.
- The RAR plugin now has a configuration dialog that lets you configure the list of supported file extensions.
- Pressing tab while in inline rename in thumbnails mode now moves correctly to the next thumbnail and keeps inline rename mode active.
- Ampersands are now handled correctly in the tooltip for a hidden toolbar.
- Closing a hidden toolbar now removes the icon for it.
- Fixed problem with the drop-down button in a Filter field not being drawn correctly when switching XP styles on/off.

- It is now possible to drag and drop from a RAR archive to a folder in the folder tree on the same partition as the archive itself.
- Deleting a text file inside a zip file that is currently viewed in the viewer pane now works correctly.
- The "You can't copy a folder into itself" error no longer results in the entire copy operation failing.
- Fixed a number of floating toolbar resize/layout problems.
- In Flat View, the Folder filters are now ignored. This should hopefully resolve the confusion many users face when using filters in Flat View (file filters still work as normal).
- Fixed repaint issue in Status Bar with horizontal viewer pane.
- Fixed unnecessary truncation in the File type Editor 'Events' tab.
- Removed default tooltips from new buttons, menus and drop-down buttons.
- Fixed text cropping in Synchronize progress dialog under Vista.
- Now supports the 'recording date' ID3v2 tag in MP3 files (currently only uses the year portion of this - needed to display a year for MP3 files tagged with Foobar).
- The 'Arguments' dropdown in the advanced Command Editor now always includes the {} arguments, even for internal commands. Also added a 'Modifiers' dropdown which lists the various @xxx command modifiers.
- The Go BACK/FORWARD command now ignores the state of the control/shift keys if it was launched from a hotkey. There is a new IGNOREQUAL argument for the Go command which has the same effect.
- Fixed problems with /O qualified arguments in user commands.
- Fixed toolbar problem where the chevron didn't appear until two buttons were missing from the toolbar.
- Fixed hard-coded paths in supplied toolbars.
- Fixed floating toolbar resize problems.
- New icons! Thanks to Trevor's hard work we now have a lovely new icon set for Opus 9.
- There is a new "icon set" plugin system that lets you install and switch between multiple icon sets easily. Icon sets are controlled from a new Preferences section (Display/Toolbar Icons). This page shows you your installed sets and lets you change their order of priority. Note that there is no concept of an "active" set - all installed sets are active and can be used, however the order they are listed in Preferences determines the order in which they are used.

You can create your own icon sets by creating a .dis file. A .dis file is a zip file that contains an xml file and one or more image files. You can create a template .dis file for the internal icons from the Preferences / Toolbar Icons page (via the option in the File menu.) Note that an icon set does not need to contain all (or indeed any) of the "standard icons." Each icon has a name, and this name can be anything you like. So you can create an icon set that just replaces the icons for the default toolbar, or a set that doesn't replace any standard icons and instead just adds new ones..

- Fixed bug in FTP address book where changes made would be lost when Apply/OK was clicked.
- Fixed FDB text clipping issue.
- Folder thumbnails now respect the EXIF rotation setting.
- Opacity boxes in Preferences/Display/Options now enable/disable properly.
- Tooltips for "Go <path>" buttons under Vista now display meaningful information.
- Output Window tab control now themed.
- The RAR plugin now works properly in thumbnails mode (including with multi-part archives).
- Movie time no longer obscured by seek bar in movie plugin.

- Opus now includes reasonable support for links/junctions. The Type column will display the type of link and the Description column will now show the target of junctions (and soft-links under Vista) as it does for shortcuts. The file functions know about junctions too - for example, Delete will not recurse into a junction or link to delete the contents, but instead will just delete the junction. GetSizes doesn't include the size of linked folders in its calculations, etc.
- The Copy and Paste commands can also be used to create links/junctions. The old Clipboard PASTESHORTCUT and Copy MAKESHORTCUT arguments have been replaced by PASTELINK and MAKELINK (although the old forms still work too). By default these commands still create shortcuts, however you can use the argument to specify a different type to create. Valid arguments are junction, hardlink, softlink and auto. Note that junctions can only be made for directories, and hardlinks can only be made for files. Soft links support both folders and files but only work under Vista. If you specify "auto", the "best" type will be chosen (e.g., under Vista this will be a soft link, and under 2000/XP it will be a junction for a folder and a hardlink for a file.) Note that due to the wisdom of Microsoft, creating softlinks under Vista requires administrator access (e.g. elevation).
- Added 'Filename only' comparison method to the Duplicate Files finder.
- The Go DRIVEBUTTONS command now has a 'hideempty' argument, which causes it to hide the buttons of any empty drives.
- Lister Themes now include an option to export/import icon sets. When saving a theme you get to choose which sets (if any) to include in the theme.
- The remaining Lister elements have now been "themed" (rendered with Visual Styles) - particularly, the Folder Tabs.
- Fixed missing separator in Toolbars.
- Dual status bar now updates correctly when sides are swapped.
- It is now possible to add icons to the status bar. The code is {i} - for example, {i:dir} for the standard folder icon, {i:file} for the standard file icon, {i:.txt} for a text file icon (any file suffix will work) and {i:pathname} to specify an image file to display. Note that when using your own image files the image size must be 16x16 (standard small icon size) and will be scaled if not.
- Fixed problem with extra black pixels when copying in image viewer.
- The image viewer and thumbnails mode now display a nice shadowed border around the images.
- Fixed problem running a repeat Find operation after one had already been run.
- The edit field in {dlgstring} no longer selects all text by default. Added {dlgstringS} if you wish this behavior.
- The folder structure of ZIP files, RAR files and other plugin archive formats is now shown in the folder tree. The option to show zips in the folder tree has been renamed and moved from the Zip Preferences to the Folder Tree prefs.
- Double-clicking on folders in system namespaces (Desktop, My Computer, etc) now correctly opens them in Opus instead of launching an Explorer window.
- The Properties command now works.
- Toolbars set to use the system colors are now themed under Vista, which makes Opus look more modern.
- The folder tree is now drawn with the new Vista style (including the fade in/out of the glyphs when the mouse moves into or out of the window). The Vista tree style can be selected from Preferences.
- Floating toolbars can now be set as Glass from the right-click menu (or from Customize).
- Floating toolbars with a visible frame now have rounded edges.
- Transparent floating toolbars are now rendered using full alpha-channel rather than simple color keying, which means no errant hot-pink pixels will be visible. Additionally, transparent toolbars now fade in/out when the mouse moves over them.

- Auto-hide docked toolbars now slide in and out of view.
- The option to display a floating toolbar with a full window frame (including a caption) has been removed.
- Moving a file from a collection to another location on the same hard drive now correctly moves the file rather than using copy/delete.
- Deleting a Folder Tab Group in Preferences now clears the Tab list correctly.
- Fixed a number of problems to do with parsing % signs in external commands / batch file functions.
- The transparent flag for selected file/folder background now works properly in conjunction with the sort field color (with blend rows/columns enabled).
- Converting 8-bit greyscale JPEGs to PNG now works correctly.
- The viewer now remembers the state of the F1 file information popup when moving between files that use different plugins.
- **@sync:** (as opposed to **sync:**) now works correctly.
- Fixed a problem with the image viewer not always respecting that the 'Auto rotate using EXIF information' option is turned off. Also fixed problem in the image converter reading the EXIF orientation tag when rotating images.
- Fixed a problem with forward slashes being incorrectly converted to backslashes when used in a function beginning with a path alias (e.g. /windows\explorer.exe /n).
- Fixed a crash caused by running the command **Find FILTER** in **"c:\temp"**.
- Fixed clipboard URL encoding for high-bit characters.
- Fixed a problem with the Find and Sync tools failing to open a Lister showing the correct file collection if the default Lister was saved with multiple tabs.
- Menu buttons now work correctly in vertical toolbars.
- **@keydown** directives that use the **alt** key now work correctly.
- Added the **{vm}** status bar code to the drop-down list in Preferences.
- Fixed a problem in the Duplicates tool which would cause the destination collection drop-down to change its value by itself.
- If the layout that is configured to open via double-click on the desktop is deleted, the default Lister is now used.
- Fixed a redraw issue caused when opening a new Lister in details mode (the Lister could appear "empty" until it was redrawn).
- Opening a Lister with Windows-E (in Explorer-replacement mode) now brings the Lister to the front.
- The Find function now correctly finds **descript.ion** files (previously it would not if support for **descript.ion** was enabled and the 'preserve comments when copying' option was turned on).
- Plugins can now provide icons that are displayed in the Plugin list in Preferences. This list also now displays About/Configure buttons directly under the plugin entries for convenience. There is also a "Download more plugins" link at the top of the page.
- The VFS Plugin API has been expanded to allow plugins to provide a "batch mode" (similar to the internal ZIP batch mode). This can result in greatly-increased speed. The RAR plugin now supports this batch mode interface – extracting files from large RAR archives is now significantly quicker.
- Added **{alias}** and **{aliasshort}** command sequences to allow the value of folder aliases to be passed to external programs. For example, **{alias|work}** would pass the value of the **work** alias.
- It is now possible to configure the background color of the Folder Tabs bar from Preferences.

- The Folder Aliases page in Preferences now has a 'Show built-in aliases' checkbox that lets you see all the built-in (hard-coded) folder aliases.
- In a single file display Lister the file display close button is now visible if more than one tab is open and the 'File display close button closes active tab' option is enabled (previously the close button was not shown in single display Listers).
- A number of improvements have been made to the **Find** raw command.
 - The **IN** argument is now **IN/K/M** and accepts multiple locations to search in.
 - There is a new **OF/K/M** argument that lets you specify multiple files to search for duplicates of (in conjunction with the **DUPES/S** switch).
 - There is a new **SHOWRESULTS/K** argument that lets you specify where the results of the search are to go:.
 - **inline** = inline in the Find window.
 - **output** = output window.
 - **lister** = File Collection in the current Lister.
 - **source** = collection in the source file display.
 - **dest** = collection in the destination file display.
 - **tab** = open a new tab for the collection.
 - **new** = open a new Lister.
 - There is a new **QUIET/S** switch. When this switch is specified in conjunction with enough arguments to begin the search automatically, the Find window will not be displayed at all – in this case, a progress window is shown instead which closes automatically once the search is complete.
- Several changes have been made to the Find dialog and the Find and Duplicate File Finder panels:.
 - The Find dialog now has a field letting you specify the collection name.
 - Find and Duplicate File Finder now let you specify multiple locations to search. Additionally, the Duplicate File Finder lets you specify multiple files to search for duplicates of.
 - New layout with "toolbar-style" buttons instead of large text buttons.
- FTP now has new speed limit configuration page with speed limit and selected hours.
- FTP Added support for FTP_VXWORKS "Passport FTP Server and VXWORKS dir listing
- FTP Fix for FlatView where base dir is /
- FTP added problem with display of /// for ftp
- FTP added retry for failed CDUP
- FTP Fixed recursive CHMOD failure and SetAttr CHMOD command
- FTP Fix for Lister path issue with x.x.x.x site names
- FTP now checks for has new speed limit configuration page with speed limit and selected hours.
- Attempting to add a file to a collection using **Copy AS** no longer crashes.
- The arrow part of a drop-down button now recognizes clicks in the full area instead of only below the arrow.
- **Go OPENINDUAL** as the middle double-click event no works on folder shortcuts.
- Alt-clicking a three-button button in the tray icon context menu now brings up the editor for the appropriate function instead of the parent button.

- Fixed “Rename error” triggered when clicking on the vertical scroll bar of the file display when inline rename in the tree is active.
- Fixed flickering of icon when location field is activated.
- Viewer pane will now correctly display a file with a .info suffix (if it’s not an Amiga icon that is).
- Fixed crash in movie plugin with WMV files.
- Switching style tabs quickly no longer leaves Opus displaying the wrong style.
- Fixed sort order problem with files containing a single embedded 0 with numeric order sorting on (e.g. File_0-3-0, File_0-2-0, File_0-1-0 would not have been sorted correctly).
- Pressing and holding cursor up in the advanced command editor now correctly scrolls all the way to the top.
- The **USEQUALKEYS** argument now works correctly in the **Favorites** and **Go DRIVEBUTTONS** commands.
- Aliases now work correctly in Favorites.
- Aliases based on other aliases now work correctly.
- Aliases now work in external commands run from Opus.
- When adding a new Alias or Favorite from Preferences, holding the shift key when clicking the Add button now pre-fills the dialog with the current source path.
- If the folder tree is locked, clicking on the currently selected item in the tree now reads that folder if the Lister is not currently showing it.
- Fixed redraw issues (smearing) in the folder tree with a background image and the auto-collapse/expand options enabled.
- Improved the appearance of the Path (Basic) location field.
- The C:\Windows\assembly folder is now correctly displayed as virtual (if Preferences allows it).
- Attempting to use the **Copy EXTRACT** command on an unrecognized archive format now displays an error rather than simply copying the file.
- The predefined “Zip and Email” command has the correct function (**Copy SENDMAIL ZIP**).
- The Filter drop-down in Sync/Duplicates now works correctly.
- It is now possible to rename a toolbar to the same name plus an extension (e.g. toolbar -> toolbar.org).
- Fixed garbage characters in {dlgstring} dialog when displayed via a file type action.
- Opus now has better support for accessing folders via Volume ID.
- When a directory read finishes the file display is no longer forced to source mode if it had been source when the read was started and then was changed to destination during the read (most noticeable with long reads like FTP).
- Fixed hotkey for Customize -> Toolbars -> Rename.
- The tray icon menu is now displayed when the right button is released rather than clicked.
- Fixed problem saving Layouts/Styles with a period in the name.
- Removed duplicate “Maximized” entry in the run mode drop-down in Simple button editor.
- Fixed problems using the **NEWTAB** argument with the **Go Recent** command.
- Fixed problem that could cause a menu to automatically execute the first sub-item.
- FTP sites with an ampersand (&) in their name now display correctly in the FTP menu.
- MS-DOS Batch functions now work correctly as User commands.

- Added the **Set ICONS** command to toggle display of icons in both Details and Power modes.
- The *Copyright* and *Artist* EXIF fields are now supported in Listers.
- Opus now supports GPS coordinate fields in EXIF tags. Several columns are available in Listers – *Coordinates*, *Altitude*, *Latitude* and *Longitude*. There is also a new command which can automatically display the location an image was taken (assuming it contains GPS coordinate tags) in Google Earth. The raw command for this is **Image LOCATE=googleearth**. If you add this command to the context menu for JPEG files, you can automatically open Google Earth and display the location where the selected image was taken. (Note that you need to have Google Earth installed for this to work!).
- The *Keywords*, *Date Created*, *Date Last Saved* and *Edit Time* document fields are now supported in Listers.
- Added a *Size on Disk (Relative)* field to Listers, to display the relative size on disk in bar-graph form.
- Added a *Color Space* column for image files to display the color space of the image (RGB, CMYK, etc).
- There is a new *Font Name* column that displays the name of a font for the associated font file (.fnt, .tff, .otf, etc).
- There is a new Directory Opus File Type called **Collection item** which lets you edit (add to) the context menu of items in file collections.
- There is a new option in Preferences to disable the display of lines in the Folder Tree.
- There is a new option in Preferences to automatically collapse non-selected branches in the Folder Tree. When combined with the existing *Expand selected branch* option this makes the Folder Tree mimic the default XP behavior.
- There is a new option in Preferences to display the configured folder aliases in the Folder Tree.
- There is a new option for Thumbnail Caching to store thumbnails using lossless compression.
- The **Join** command now has a **HERE/S** parameter to set the output folder to the source by default.
- Added a command to the Viewer window menu/taskbar menu to close all open viewers. Also added **Close ALLVIEWERS/S** command to allow this to be bound to a hotkey etc.
- Added **NOLABEL/S** flag to **Favorites** and **Recent** commands to allow the display of labels to be turned off.
- The **Clipboard COPYNAMES** command has a new **single** option, to specify that all selected names should be placed on a single line (separated by spaces) instead of on multiple lines. There is also a new **hash3** option to copy just the MD5 checksums of selected files, without the actual filenames. Additionally, there is a new **path** option to copy the path of the source Lister rather than selected files.
- Added **ToggleMinimizeAll** as an option for the **Set LISTERCMD** command. This command toggles all open Listers between minimized and restored.
- The standalone Viewer can now display images as Tiled – useful for previewing what a tiled background image would look like.
- Pressing F2 repeatedly when in inline rename mode now reveals the file extension if it was hidden (because it was turned off in the Lister).
- The **Go**, **Favorites** and **Recent** commands have a new **USEQUALKEYS/S** argument. When this is specified, the commands automatically react to the control/shift/alt keys being held down to perform the default action (control = open in dual, shift = new Lister, alt = new tab).
- The **Go**, **Favorites** and **Recent** commands also have a new **KEYARGS** option. This lets you specify multiple sets of arguments that are only applied if certain key combinations are held down when the function is executed. Note that **KEYARGS** is a **/M** option and so can take multiple input. For example,.

Go C:\ KEYARGS ctrl:NEW “shift:NEWTAB=findexisting” ctrlshift:NEWTAB.

Note the **shift:** parameter is quoted in the above example – this is to prevent the embedded = sign from confusing the command parsed. You would also need quotes if specifying two or more arguments separated by spaces.

- The colors of selected files in file displays are now faded by default when the file display does not have focus, to provide a visual cue that the file display is not active. This is to match the standard behavior of trees and list views in Windows. The amount of fading can be controlled from Preferences.
- The colors of items in the Folder Tree can now be configured in Preferences.
- There are now options to display grid lines in the file display in both Details and Power mode. Both the color and pattern of the lines can be configured in Preferences.
- There is a new Viewer option in Preferences to auto-rotate images based on EXIF information.
- The Simple **Select** dialog has a new *Partial Match* option to save you having to enter a * before and after the text to match.
- The File Filter field has a new *View Filter* option (accessed through the control menu). In this mode, the filter string entered acts like a 'Show Files & Folders' filter (any items not matching the string are hidden), however the difference is that in this mode the filters in the folder format are not modified. This lets you have a pre-defined filter set up in the folder format and then augment it with an additional layer of filtering. The keyword to set this mode on by default is **local** (use this in the Args field of the filter field). There is also a new **Set VIEWFILTER** command to control this filter from a button. Note that the view filter is cleared automatically on any folder change.
- The File Filter field also has a new *Auto-content* option. With this option enabled, the drop-down of the File Filter is automatically populated with a list of wildcard patterns matching the files in the current Lister, with the most common file types on top. The keyword to set this option on by default is **autocontent**.
- Added the **Go FOLDERCONTENT** command. This command makes it possible to display the contents of a disk folder dynamically in a menu (similar to the way the Start menu displays the contents of the Programs folder). For example, adding **Go FOLDERCONTENT PATH C:** to a menu would result in a list of your C:\ drive being displayed when the menu was open.

The **FOLDERCONTENT** argument takes several optional parameters:.

- **button** – specify this parameter to cause sub-folders to be displayed as menu buttons. Clicking the button part will read that folder, expanding the drop-down will display the sub-folder contents.
- **norecurse** – do not recursively display sub-folders.
- **nodirs** – exclude folders from the list.
- **nofiles** – exclude files from the list.
- **showhidden** – include hidden files in the list.
- **noparselinks** – do not resolve file links.
- **showempty** – includes empty folders in the list.
- **filefilter=<pattern>** - wildcard pattern to match files.
- **dirfilter=<pattern>** - wildcard pattern to match folders.
- **maxdepth=<depth>** - maximum recursion depth.

Additionally, when used with the **FOLDERCONTENT** argument, the **PATH** argument can take multiple paths separated by vertical bars (|), to combine the list of multiple directories into one. For example, the following command when added to a drop-down menu would simulate the All Programs menu in the Start Menu:.

Go FOLDERCONTENT PATH /programs/commonprograms.

- There is a new **Synchronize** format in the Default Formats section in Preferences. This format is used whenever Synchronize mode is entered. By default this format clears the format filters in both file displays

– having filters set can prevent Synchronize from working as expected. If you want to keep using filters with Synchronize simply disable this format from Preferences.

- The File Display drop-down in the Styles editor now lets you choose Dual display (both horizontal and vertical) with **NavLock** enabled. This enables you to have a style which automatically engages **NavLock** mode.
- The Styles editor also now lets you control whether the Format Lock is on or off (or unchanged).
- The **Confirm File Replace** dialog has a number of new options. In the Replace drop-down, there are now **Rename New** and **Rename Old** options to automatically rename either the original or the new files. The Skip drop-down has a new **Skip Identical** option which will skip the current file and any subsequent files that appear to be the same (name/size/date match).
- There is a new option in Preferences called *Retain cursor position on line rename*. If this is turned on, pressing the cursor key up or down to move to the next item in inline rename mode will retain the relative cursor position in the name of the next item.
- Opus can now show album art from MP3 and WMA files in Thumbnails mode.
- There is now an **Undo Close Tab** command, accessed from the folder tab context menu. This will re-open the last tab (or tabs) closed. The matching raw command is **Go TABUNDOCLOSE**.
- Folder Tabs can now be locked. There are two different lock modes. **Locked** means that no folder changes are allowed in this tab. Attempting to read a new folder (for example, by double-clicking) will cause a new tab to be opened. The second mode, **Locked (allow changes)** means that folder changes are allowed, but are only temporary. In this mode, clicking the Root button (**Go ROOT**) or switching to another tab and then back will revert to the original folder. The tab lock state can be changed from the Folder Tab context menu, or using the **Go TABLOCK** command. Additionally, the Edit Folder Tabs dialog in Styles and Tab Groups Preferences lets you specify the lock state of tabs.
- Folder Tabs can now be renamed. When a custom name is set for a tab that name remains in force irrespective of folder changes. To rename a tab, single-click the label, or right-click the icon and choose Rename Tab. Tabs can also be given names in the Edit Folder Tabs dialogs in Preferences.
- There is a new option in Preferences to disable the “double-click to close” default folder tab behavior.
- The **Favorites** command has a new **ADDDIALOG/S** flag to display a dialog letting you select where to add the new favourite.
- The **Clipboard PASTE** command can now optionally specify the format to paste a clipboard image in. E.g., **Clipboard PASTE=jpg:90** to paste the clipboard image as a jpeg with quality set to 90. Additionally, there is a new **AS** argument for the **Clipboard PASTE** command which lets you specify the default name of a pasted image or text file. Note this has no effect when files are on the clipboard – it simply lets you alter the default “Clipboard Image” and “Clipboard Text” filenames when pasting a bitmap or text.
- There is a new option for Lister Layouts to open relative to the current monitor. For example, a Lister saved in a Layout to open at 50,50 might open at 1074,50 if the mouse was on the second monitor when it was opened. There is also a new option for Lister Layouts to make a layout ignore the folder formats saved within it, and to use the default format instead. Additionally, the ‘Close existing Listers’ option is now per-Layout, rather than global.
- The **Find** command has new **SIMPLE** and **ADVANCED** options to control the mode it opens in.
- There is a new option in Preferences to turn off the borders around thumbnails.
- There is a new **{vm}** status bar code to display the current view mode.
- The **Go BACKLIST/FORWARDLIST/HISTORYLIST** commands can now take an optional **sort** parameter to specify the list should be sorted alphabetically rather than in historical order.
- There is a new option in the Folder Options dialog to *Keep folders sorted alphabetically*. With this option enabled, folders will always be sorted alphabetically irrespective of the sort settings of the folder.
- The **Set AUTOSIZECOLUMNS** command can now take option parameters to specify which window is auto sized. The options **source**, **dest**, **left**, **right**, **focus** and **both** all specify the window or windows to

auto size. The option **widest** causes the columns in both windows to be set to the greatest width of the two.

- The options for Left and Middle mouse button in the Viewer Preferences now include a Close Viewer option.
- The **Split** dialog now has default size options for DVDs. Additionally, the **Split** command now accepts command parameters, to automate the split operation.
- The Image Converter can now resize by percentage. The **Image CONVERT** command has a new **PERCENT** argument to automate this.
- There is a new option in Preferences to copy NTFS security settings when files are copied.
- There is a new **Clipboard SET** command to place arbitrary text in the clipboard. The **SET** is a new type of argument - **/R**, which indicates “raw”. When the **SET** argument is specified, the entire rest of the command line (including any spaces, quotes, etc) will be treated as the value of the argument and placed in the clipboard.
- The standalone Viewer has a new option in the View menu to hide (ignore) the alpha channel of the currently displayed image.
- There is a new option in Preferences to automatically select the first file in the folder. When turned on, the first item in the folder will be selected once the folder has been read. Note that there are two options for this – one specifically for Power mode (in the Power Mode section) and one for all other view modes.
- The **Change Attributes** dialog has been redesigned slightly. Instead of “cryptic” checkboxes for the attributes, there are now lists showing the attributes in plain English. There is also now the choice to specify exactly the attributes you wish to be applied, as well as the old “Set these, and clear these” method. The **SetAttr** command is also now able to set/clear the Compressed and Encrypted state of files in NTFS.
- By default, the **Previous** tab in the Styles Tab bar is no longer displayed. This tab seemed to be a cause of confusion for new users and was really only added to address the limitation of the tab control’s inability to have “no selection”. In Opus 9, the last selected tab is selected by default in a new Lister, even if the layout of the Lister does not match the tab. Clicking the already selected style tab will reset the Lister to the settings of that Style. The Previous tab can be added back by adding the **showprevious** argument to the Style Tab field (via the Args field) if the former behavior is desired.
- Thumbnail rendering has been sped up. In Preferences you are now able to specify the number of simultaneous threads used to generate thumbnails (previously there was simply a “use multiple threads” option). In general thumbnails should render much quicker than before, and thumbnail caching should also be more efficient.
- Most dialogs in Opus have undergone some sort of improvement. A new “generic requester” dialog has been added to replace the old style “Are you sure?” type dialogs, which looked very plain. Most dialogs are resizable (where it makes sense), and resizable dialogs are now mostly flicker free and have a sizing box in the bottom-right corner.

Minor changes / bug fixes

- Fixed a lock-up caused by entering certain wildcard patterns in the Show Files Filter field (e.g. `*.##~cpp` and `#~.txt`).
- Fixed a crash when trying to create a folder called `[]`.
- RegExp rename is now protected against infinite loops when using `#`.
- **Go** command no longer crashes when attempting to read reserved filenames as folders (e.g. `aux`, `lpt1`, `con`).
- Fixed crash when copying files in a collection that is located on an ftp server.

- Fixed crash in Zip handling in the Unicode version, with zip files with descriptions more than 4096 chars long.
- “My Documents” and child folders now expand correctly in the tree when loaded from a tab group.
- The File Collections icon on the desktop now works correctly even if Explorer Replacement mode is turned off.
- Commands based on **Filetype CONTEXTMENU** now work correctly in both file collections and the Find Results window.
- Shift-delete in a file collection now behaves the same as shift-delete in a normal folder (instead of just deleting the files without asking).
- Optimised and improved the handling of file collections on program startup. Previously, Opus would attempt to access all files in file collections when the program was run – leading to long delays on startup with large file collections. This now does not happen anywhere near as often – and if it does need to happen, it is done on a low-priority background thread, so the launching of the program is not delayed.
- Fixed a crash when a tab displaying a file collection was closed while the collection was still being loaded.
- Optimised and improved thumbnail caching.
- Fixed a problem with file filters when in Flat View Mixed No Folders mode.
- **Go OPENCONTAINER NEWTAB=findexisting** run on multiple items at once no longer gives up after finding a tab that is already open.
- Improved handling of argument drop-downs in advanced function editor.
- Improved scrolling in file collections, fixed a bug that caused unnecessary access to VFS plugins when scrolling in file collections.
- Using Test mode in the Advanced Rename dialog no longer causes options to be reset when it returns.
- Fixed path completion anomaly with ftp paths.
- Fixed problem when going from one ftp site to another when both prompt for a password.
- Removed Relative Path fields from field dropdown in Advanced Rename dialog.
- Fixed problem with use of Favorites list from Lister context menu on network drives.
- The **Select FIRST** command now accepts the **TYPE** parameter.
- Fixed problem with Viewer getting confused about file counts when images and movies mixed together in the one folder.
- Resizing text in the text viewer plugin no longer causes the viewer window to resize ridiculously small.
- Cutting a toolbar button from a sub-menu and pasting it somewhere else now correctly removes the original.
- The Rename dialogs now position themselves correctly when switching between simple and advanced modes.
- Attempting to change the case of a filename within a zip file now displays an error message instead of automatically renumbering the file.
- Fixed a problem in Filetypes editor where the commands of newly added actions could be discarded.
- Dragging a folder from WinRAR to an Opus Lister no longer locks up the Lister while the extraction is performed.
- The system setting *Hide underlined letters for keyboard navigation until I press the Alt key* is now respected in toolbars and menus.
- The movie plugin no longer attempts to generate thumbnails for files which are opened for writing – for example, this is to prevent problems caused by trying to thumbnail an incomplete movie download.

- Opus can now display DIBs (e.g. OS/2 bitmap files).
- The bottom row of thumbnails in a thumbnails-mode Lister now handles wrapped names in rename mode correctly.
- If you shift-click to select a range of thumbnails, you can now control-click to add another individual thumbnail to the selection. Also fixed a problem with shift-selection in thumbnails mode that could cause the selection range to end up wrong.
- Fixed spacing issue in thumbnails mode with long filenames.
- Double-clicking the empty space in a thumbnails mode Lister no longer launches the last file, and single-clicking in the empty space between thumbnails no longer selects the nearest one.
- The “Auto” View Mode option in Styles was not properly resetting the folder to the default format. Also added **Set VIEW=default** command to achieve the same effect.
- The Duplicate File Finder now only calculates MD5 checksums when absolutely necessary, making an MD5 comparison much quicker.
- Copying folders no longer loses “description” files if file comment support is enabled but copying of comments is turned off.
- It is now possible to rename a folder in the tree beginning with a ‘.’ (a dot).
- Filetype events on .lnk files now work correctly.
- **CreateFolder** no longer adds ghost entries to the Lister if called with a pathname containing a double-backslash.
- The **Delete**, **Clipboard** and **Properties** commands now act on the destination file display if it has input focus (unless the **NOFROMFOCUS** argument is specified).
- **Go NEWTAB=findexisting** now works correctly with path aliases.
- Inline rename now allows you to type slashes (path separators) to rename folders into sub-folders.
- The Output Window now checks its default size is sensible in case the saved size is invalid.
- Toggling the **Activate Opus ZIP file handling** checkbox in Zip Preferences no longer clears the associated context menu options.
- **Go NEWTAB=findexisting** now works correctly in conjunction with **OPENINDUAL**.
- The “Owner” field is now available in file collections and FTP sites.
- Fixed some problems with the DST Compensation option in Synchronize.
- The Set as Wallpaper command in the Viewer (and the associated raw command) now works if a previously set wallpaper (DOpus_Wallpaper.bmp) already exists and is marked as hidden. Additionally, the Set as Wallpaper menu item in the Viewer now has a sub-menu letting you select from tile/stretch/centre options.
- Entering customize mode by alt-clicking on a tray menu icon now correctly resizes the tray menu, and correctly displays a button editor for the item clicked on.
- Adding a button to the bottom of a vertical floating toolbar now makes the toolbar grow vertically instead of horizontally.
- The Acrobat Reader Print context menu item is now correctly displayed in PDF file context menus.
- If a button had a function set to a UNC path (without a Go command), it could read into the wrong side of a dual Lister.
- F2 is now blocked in the Recycle Bin (inline rename in the recycle bin doesn’t work correctly and shouldn’t be allowed).
- Renaming files in FlatView using file information fields would get confused if there were two files with the same name.

- Deleting a non-empty folder from a NAS device could sometimes appear to have succeeded when in fact it failed.
- Folder formats for UNC paths are now saved correctly when added from the Preferences dialog.
- It is now possible to add more than one item to the end of a docked toolbar.
- Fixed a display glitch when turning a button on a docked toolbar into a three-button one.
- The **Find Panel** and **Find Tool** predefined commands are now both in the Tools category in Customize.
- Fixed a problem with file notification that could leave ghost items behind in a folder that had experienced lots of rapid file create/deletes.
- The “Tabs on Top” Preferences option no longer gets reset (seemingly at random).
- The Duplicate File Finder can now search logical drives correctly, and searching ‘all’ drives also works correctly.
- Fixed a memory leak that could occur when aborting the loading of a JPEG image.
- In Find & Replace mode the Rename dialog now prevents you from entering a * in the from/to fields.
- Fixed a problem with hotkeys defined to use the same Alt-key as a &Menu item.
- **Clipboard COPYNAMES** now correctly strips the **SITE=** internal syntax from FTP paths.
- No longer crashes/fails to show correctly bitmap images with an invalid *biSizeImage* field in the BITMAPHEADERINFO structure.
- Opus now escapes % signs in DOS batch files.
- Turning off a Content Type format no longer resets the settings within it.
- Fixed rendering glitch in the Edit Folder Tabs dialog (in Lister Styles) when tabs were saved for ftp sites or other long paths.
- Fixed display problems with tab background textures used in Opus dialogs with Windows XP theming enabled (problem occurred when dialog was resized or was larger than approx. 600 pixels high). Also fixed a problem in some dialogs where pressing Alt to reveal the _ underscore characters would clear the text of some labels. Fixed redraw problem when icons could be drawn over the top of other ones (e.g. in the Filetypes dialog).
- The root Desktop item in the Folder Tree now has a context menu.
- A command combining **Select All** followed by **Delete FILTER** now correctly applies the filter to the delete operation.
- Reading a folder via **Go PATHENTRY** now respects the “Always in keyboard mode” Power Mode option, and correctly enters keyboard mode after the folder has been read.
- Fixed problem with temporary batch files created by Opus commands not being cleaned up. Also existing batch files should no longer be overwritten by new ones.
- **Go TABGROUPLOAD** now works in conjunction with the **NEW** argument, to open a tab group in a new Lister.
- With dual trees turned on, the trees no longer jump to automatically show the current selection when their file displays receive input focus.
- If an image file is rotated using the Image Converter, its thumbnail is now automatically updated.
- Improved performance of filename completion on UNC paths.
- **FileType NEW** now displays an error message if the new file could not be created.
- The File Filter control now remembers its settings if the Lister it is displayed in is resized enough to make it disappear, and then resized back to make it reappear again.

- Fixed a problem in the Viewer where items in the File menu could become corrupted if it was opened while the right-click context menu was also displayed.
- Switching to a folder format that sorts on a column which wasn't previously displayed in the Lister could result in the sorting being incorrectly applied.
- Batch Zip extraction of multiple zip files no longer aborts when it encounters an empty zip.
- Dragging a newly created sub-menu item in a FileType context menu to another menu now works correctly.
- A drop-down button menu now no longer disables the drop-down part if the button itself is disabled.
- The Viewer taskbar button now has a right-click menu even when the Viewer is in Full Screen mode.
- Closing a Toolbar from the Customize dialog while in Customize mode no longer loses any changes made to that Toolbar.
- Fixed problem with **NavLock** mode not correctly re-syncing when parenting down and then back up a hierarchy where one side goes deeper than the other.
- The viewer pane no longer steals focus when the text viewer is displayed and the Lister is deactivated and then reactivated (unless it already had focus when that happened).
- The Zip Packed column now works correctly in Flat View mode.
- Fixed a problem where the Viewer could be resized too large for a large image in fit-to-page mode.
- Fixed a problem where undoing a delete to the recycle bin could restore the wrong file if two files with the same names had been deleted from the same path (e.g., delete C:\file.txt, and then create another C:\file.txt and delete it as well).
- Fixed problem with the time and date fields in the **SetAttr** dialog not responding to the keyboard correctly.
- Fixed unnecessary truncation of the Location field in Print Folder.
- A command that specified **Copy MOVE TO** . followed by **Go BACK UP** would incorrectly go up one level for each file that was selected (instead of only going up once, at the end).
- Running the **Find** command from the All Folders context menu no longer displays a progress dialog.
- If you paste a file path into the location field, the Lister will change to show that folder and auto-select the file. The focus is now also correctly set to that file.
- Saving a new Filter from any of the Advanced Filter control dialogs now updates the drop-down list in the Synchronize panel automatically.
- Listers opened from Layouts are now checked to make sure they are at least partially on-screen.
- Fixed a painting problem in the text viewer when using Courier New 9 in hex mode.
- Fixed problem in Preferences Favorites editor where renaming a long Favorite to a short name would not refresh/remove the horizontal scrollbar.
- Numeric Order sorting now correctly handles leading zeroes.
- It is now possible (again) to deselect files in Power Mode by control-clicking them.
- The Spacer field can now be resized vertically in vertically-oriented toolbars.
- Opus now updates the creation time column in the Lister correctly after using **SetAttr CREATED**.
- Inline rename history now works correctly for filenames containing periods.
- The **chcp** command written to DOS batch files is now redirected to null rather than nil.
- **NavLock** now works correctly in file collections.
- The Favorites list in Preferences now updates automatically when a Favorite is added externally (via the **Favorites ADD** command).

- Clicking the bottom of a full-screen viewer window now correctly displays the toolbar even if the bottom of the image is not visible.
- Fixed a crash decoding very large TIFF images. Additionally, monochrome (1 bit) TIFF images are now anti-aliased (useful for faxes).
- The filename column is now automatically resized when a file is rename even if the Lister is not currently sorted by filename (of course, auto-size columns must be enabled).
- It is now possible to rename the current folder in the Folder Tree while thumbnails within that folder are rendering.
- The inline rename field no longer gets its size confused after pressing up or down to move to the next file in the list.
- Inline rename now supports Tab and Shift-Tab to jump to the next/previous file in the list. In the Thumbnails and Large Icon modes, this has meant that cursor up/down can now be used to move up and down within the multi-line edit field, rather than jump to the next/previous file.
- The Rename Preset list is now sorted correctly when a preset is renamed.
- Clicking on the currently active tab in the destination file display now sets that display to the source.
- Lister Styles now save the vertical orientation state of the utility panel.
- The Find tool no longer steals input focus when the Find is complete.
- In Find, searching for files between 2kb and 4kb in size now correctly returns all files 2000 <= bytes <= 4999 (instead of 1000 <= bytes <= 4999 as was previously the case).
- Folder Aliases are now sorted correctly upon creation.
- Adding a new folder tab to a Tab Group in Prefs and then cancelling the dialog no longer leaves an empty tab behind.
- In the Folder Format dialog on the Options tab, the color picker was always enabled even if the Image options were not. The color option now has effect if <Default Image> is selected and there is no default image defined. When <No Image> is selected, the type drop-down is now disabled.
- Double-clicking folders on a CD that has been ejected no longer displays an "Open With" dialog.
- **Go NEWTAB=findexisting** now resolves folder aliases before checking if they are already open.
- The option in Prefs to *Update permissions when moving files* now correctly orders the DACL of the moved file.
- **Go NEWTAB <path> DUALPATH <path>** no longer creates an unnecessary empty tab on the dual side if the Lister was not already in dual display mode.
- **Set FORMATLOCK** now correctly changes the lock state for both sides of a dual-display Lister. This command also has new arguments to specify which side to lock.
- A **Set COLUMNSTOGGLE** button with a specified position (e.g. **Set COLUMNSTOGGLE=pathrel(0)**) now correctly displays as checked/selected when in force.
- Folder thumbnails in InfoTips no longer appear as 256x256 if dynamic thumbnail sizing is enabled – instead, they respect the specified thumbnail size in Preferences.
- Fixed separator line redraw problem in the Customize/Keys list when scrolling the list.
- The colors in some 16 bit BMPs are no longer distorted when converted to PNG.
- The horizontal scrollbar is now updated correctly when the MD5 column is added to a Lister.
- Fixed refresh issue when changing Folder Tree background color.
- The Viewer now refreshes correctly if the background color is changed from Preferences while a transparent image is displayed.

- An & added to any character in a Favorites entry to specify a menu hotkey for that Favorites item now correctly displays the underscore.
- Dual file-display status bar alignment codes now work correctly if one file display is showing a system namespace like My Computer.
- The FileType context menu editor now correctly handles items with && in the label.
- The thumbnail resize slider is now drawn correctly if it is placed at the very edge of a toolbar.
- The status bar is now redrawn correctly when a Lister is maximized/restored.
- Fixed an occasional redraw issue with Lister Pins when the focus changes.
- 32 bit PNGs (and other transparent images) are now supported as background images in Listers/Toolbars etc.
- The status bar now updates correctly when files are deleted in checkbox mode.
- The position of the **File Collections** item in the Folder Tree is now irrespective of the state of the *Add File Collections icon to the Desktop* Preferences option. A separate option has been added to choose whether it is displayed under the Desktop or at the same level.
- The collections used for Find and the Duplicate File Finder now remember the path below which they searched, and use this when displaying the Relative Location field in Listers.
- File Collections now appear in the “Select Folder” dialog when adding folder formats via Preferences.
- **Go NEWTAB FROMSEL** now works with selected ZIP files.
- The **Toolbar CLOSE** command can now be used to close a button’s own toolbar – specify **Toolbar CLOSE name=*this**.
- The *Ignore seconds* option in Synchronize now works better when comparing files on different file systems.
- The left and right cursor keys now wrap to the previous/next line in the icon display modes.
- Font thumbnails are now generated for OTF fonts as well as TTF fonts.
- Drag and drop into a **Go** or **Copy** command toolbar button now works even if the button is in a sub-menu.
- The Save drop-down in the Folder Options dialog now has a “Save for this Folder and all Sub-folders” option – which has the effect of automatically turning on the *Use as the default format for all sub-folders* option in the new folder format.
- Opening the utility panel (find/sync/dupe finder) is now much quicker.
- The context menu in the Viewer is no longer a direct copy of the menu bar – instead it is a separate menu which contains only the more useful commands.
- Lister Styles can now be arranged in arbitrary order instead of only being sorted alphabetically. The same is also now true for Lister Layouts. Additionally, you can add separators to the Layout list.
- The *System global* option is now turned off by default for newly created hotkeys.
- Saved Folder Formats (for paths) now have checkboxes in the Folder Formats list in Preferences, and can be turned off without losing the format specification.
- The **{modified}** and similar date/time fields when used by the Advanced Rename function can now accept a date formatting string. For example, **{modified|T#HH-mm-ss}** or **{shootingtime|D#yyyMMdd}**. Note the **T#** and **D#** which are necessary to specify time or date. Additionally, **{date}** and **{time}** now work in the rename dialog.
- The context menu in inline rename now has a Change Case sub-menu, offering the same case changing options as are available in the Rename dialog.
- The **SetATTR** command now has a **FILE** argument to set the attributes of a specified file.

- The Find location field now handles environment variables and path aliases.
- Environment variables used in path aliases are now only expanded when they are used, rather than expanded when they are added.
- The **Set SORTREVERSE** command can now take a **togglesmart** option. This is useful in conjunction with the **SORTBY** parameter. If the field specified by the **SORTBY** parameter is already sorted, then the **SORTREVERSE** will take effect (reversing the sort order). If, however, the sort field has to change, then the reverse parameter will be ignored.
- The **Print Folder** dialog can now be resized horizontally.
- It is now possible to change the font for the File Display border via Preferences. Additionally, the color of the File Display border in a single Lister that is off (neither source nor destination) can now be changed through Preferences.
- Added Top/Right and Bottom/Left options for background images in Listers.
- The Viewer pane and standalone Viewer now have a new button in the bottom toolbar to toggle in and out of “view as hex” mode.
- The **Set DUAL** command has new **left** and **right** optional parameters to configure which display should be closed (by default, the destination is closed).
- When the toolbars are locked, a separator bar is now drawn between two toolbars that are on the same row.
- Explorer Replacement mode now has an option to open folders in a new tab in the existing Lister rather than opening a new Lister.
- The Directory Opus events in the FileType editor are now displayed with friendlier names (e.g. “Middle double-click + Alt” instead of “mdblckalt”).
- Newly opened folder tabs now respect the state of the Format Lock in the Lister – if the format is locked a new tab will inherit the format of the current window rather than getting the default format.
- The **Rename** command would previously start the rename automatically if parameters like **NAME** and **PATTERN** were specified on the command line. Now, if the **ADVANCED** or **SIMPLE** options are also given, the Rename dialog is always displayed, irrespective of other arguments. This lets you define a command to populate the Rename dialog fields automatically but without starting the rename operation itself.
- The **Copy SENDMAIL** command can now take the subject of the message on the command line. For example, **Copy SENDMAIL=someone@example.com?subject=Hello**.
- When converting a transparent/alpha image to a format that does not support transparency, the Image Converter now uses the color you specify as the background when displaying the preview.
- Opus now supports 8-bit alpha-indexed PNG files.
- When displaying music play times in the status bar, Opus now displays the number of days as well as hours/minutes/seconds if the total is > 23:59:59.
- Checkbox mode now supports drag-selection to check/uncheck files. Clicking on a checkbox and then dragging up/down over the checkbox column will apply that check state to the files dragged over.
- The Send Email dialog now has a BCC field.
- The width of columns in List Mode can now be configured via Folder Options – if auto-size is turned off, the size specified for the Name field is now used in List Mode to set the size of each column.