

Introduction



Smart Pix Manager Help

Introduction

- [What is Smart Pix Manager?](#)
- [Smart Pix Manager Features](#)
- [Ten Minute Tutorial](#)
- [Testing Smart Pix Manager Functionality](#)

Using Smart Pix Manager

Smart Pix modes

- [Overview](#)
- [View mode](#)
- [Edit mode](#)
- [Disk Browse mode](#)
- [Bookmarks mode](#)

Keys, Toolbars, etc.

- [Toolbar](#)
- [Menu Bar](#)
- [KeyboardShortcuts](#)
- [Mouse Shortcuts](#)
- [Status Bar](#)

Viewing Images

- [How to View Images](#)
- [Full-Screen Mode](#)
- [Opening images in new windows](#)
- [Running slideshows](#)
- [Displaying File Information](#)
- [Printing Images and Thumbnails](#)

Working with the Smart Pix Database - General Usage

- [Adding a new source directory](#)
- [Maintaining your source directories](#)
- [Working with Attributes](#)
- [Using Attribute Groups](#)
- [Creating New Attributes and Groups](#)
- [Finding items in your database](#)
- [Updating your database](#)

Working with the Smart Pix Database - Advanced Usage

- [Using Multiple Databases](#)
- [Managing your Databases](#)
- [Converting your Image Storage Method](#)
- [Back up and restoration of your database files](#)
- [Importing and Exporting of Database entries](#)

File Management

- [Overview](#)
- [Saving and Conversion of Images](#)
- [Renaming files](#)
- [How to Move and Copy Files](#)

- [Deleting Files](#)
- [Directory Management](#)
- [Printing Images](#)

Editing Images

- [Manipulating your Images](#)
- [Rotating and Flipping Images](#)
- [Resizing Images](#)
- [Filters and Effects](#)
- [Launching images in an editor](#)

Thumbnail Functionality

- [Displaying Thumbnails](#)
- [ThumbViewer](#)
- [Creating thumbnail sheets and file lists](#)
- [Building thumbnails](#)

Setting Options

- [Viewing Options](#)
- [Program Options](#)
- [Other Options](#)
- [Database Settings](#)

Other

- [Acquiring images from a scanner](#)
- [Customising the look of Smart Pix Manager](#)
- [Running the Smart Pix database from CD-ROM](#)
- [Using Relative Paths](#)

Registration and Licensing

- [What is registration?](#)
- [Why should I register?](#)
- [How can I register?](#)
- [Registration Form](#)
- [Licensing Details](#)

About Smart Pix Manager

- [Getting Technical Support](#)
- [Feedback](#)
- [Getting Program updates](#)
- [Acknowledgements](#)

What is Smart Pix Manager?

Smart Pix Manager is an Image Management and Viewing program. With the proliferation of the Internet, users are faced with the growing problem of how to deal with the sheer volume of images that reside on our computers.

To address this most users have created multiple directories to categorise their images, then multiple sub-directories for finer differentiation. If we take the example of a car buff storing his collection of car photos. He may have directories for sports cars, racing cars and family cars, and each of these may have a sub directory for country of manufacture and then another sub-directory for whether the car is stationary, being driven, being rolled, etc. But what if he wants only to view all German cars, or all red Racing cars or all Japanese sports cars being driven by an African-American wearing a Stetson, for that matter?

In this vein Smart Pix Manager was created. It uses a database to allow you to store multiple attributes (descriptive words or phrases) against any file on your computer system and then retrieve a hit list of all files that match a certain search criteria. For example our car buff need only put all his folders in a particular directory (or keep his existing directory structure) then add references to these files to the Smart Pix database, (assigning default attributes as he does). Later he might go through and assign extra attributes, the car colour, the driver, etc.

Once he has his database set up then it is relatively easy for him to view all files that are relevant to his interest at that time. He need only click on the attribute or multiple attributes that he seeks and hit search. When he adds new files to his system, he simply clicks update to make them available.

Smart Pix also allows you to add a full text description to your images. Images with particular file names or descriptions can be located using the Find function

Smart Pix also functions as a standard browser for viewing files on your hard drive, CD-ROMs etc.

Also:

- [Smart Pix Manager Features](#)
- [Ten Minute Tutorial](#)
- [Testing Smart Pix Manager Functionality](#)

Smart Pix Manager Features

- Supports all common image formats: JPEG, GIF, animated GIF, Bitmaps (BMP, RLE and DIB), TIFF, Metafiles (WMF and EMF), Icons (ICO), PNG, PCX, TGA, PBM, PGM and PPM
- Creates and maintains a database of your images and allows you to assign and remove multiple attributes (descriptions or keywords) against each file.
- Supports AND/OR searching for images of specified attributes.
- Allows you to add a full text description to your images, these descriptions can be searched across using the Find function
- Advanced thumbnail display, printing and exporting functionality, including the ability to create thumbnail image sheets and text file description lists
- Ability to create HTML thumbnail indexes allowing you to browse your images with a web browser or publish them to the Internet
- Simple to use, including batch functionality for input of files and attribute assignment and removal. If your image collection is already sorted into directories you can add initial attributes to all your files in minutes.
- Optional password restricted access (Database is encrypted!)
- Optional storage of image files with false extensions (such as .DLL) to make them invisible to other users/programs
- Optional storage of images within the database for high security
- Also supports standard browsing of files on your computer system
- Standard viewing features, such as Slideshow, Zoom and Shrink to fit and Stretch to fit.
- Advanced viewing features, such as background load, fast display and cancel during load.
- Image manipulation functions including rotate, flip, resize and various filters and effects
- Supports Twain scanning of Images
- Supports Wheel Mouses, such as Microsoft Intellimouse
- Images can be launched into new image windows, and image windows toggled through with a single key
- Images can be bookmarked for later viewing or saving as an image collection
- Complete support for Drag and Drop of files and directories between Windows Explorer and other applications.
- Distributable Database format allows Smart Pix to be shipped on Image CD-ROM's
- All standard file and directory management functionality and image conversion features

Also:

- What is Smart Pix Manager?
- Ten Minute Tutorial
- Testing Smart Pix Manager Functionality
- Information on registering Smart Pix

Ten Minute Tutorial

Smart Pix offers such a breadth of functionality that it can be quite daunting at first glance. The key to understanding Smart Pix is grasping how its database works.

Lesson 1: The Smart Pix Database

Smart Pix uses a database to store information about the image files on your computer. The database contains a list of the folders where you have images (you tell Smart Pix which folders to use), these are called your Source Directories.

E.g. it might look like this

```
C:\My Pictures\Porsche
C:\My Pictures\Porsche\Racing
C:\My Pictures\FerrariC:\My Pictures\Mercedes
```

When you give Smart Pix a new Source Directory, it will look at the directory and create a list of all the files it contains, e.g.

```
C:\My Pictures\Porsche 944.jpg
    pawshpic.gif
    Fast_Porsche.jpg
    911.png

C:\My Pictures\Porsche\Racing racingpic.jpg
    winning.gif
    overtake.gif

C:\My Pictures\Ferrari
    Red GTO.gif
```

etc.

So Smart Pix now has a list of images on your computer (all the images in the folders that you told Smart Pix were Source Directories). Note that Smart Pix isn't actually storing the images, it is just storing information on where the files are on your hard drive.

Now all of this would be pointless were it not for Attributes. Attributes in Smart Pix are keywords that you use to describe your image. Each image can have as many attributes as you like. For example for an image of a red Porsche 911, you might assign the attributes; 'Red', 'Porsche', 'German', 'Being Raced'.

So our database might now look something like this (in actuality the database isn't stored like this, as it uses relational tables to make it more efficient, but this is the easiest way to conceptualise it):

```
C:\My Pictures\Porsche 944.jpg
    German
    Porsche
    Red
    944
    US Release

    pawshpic.gif
```

German
Porsche
959
Red light racing
silver

Fast_Porsche.jpg
German
Porsche
200 mph +
959
Rally release

etc..

These attributes can be searched upon once you have assigned them to your files. For example, to locate all your images of German racing cars, or all supermodels wearing bikini, or for whatever your image collection may be.

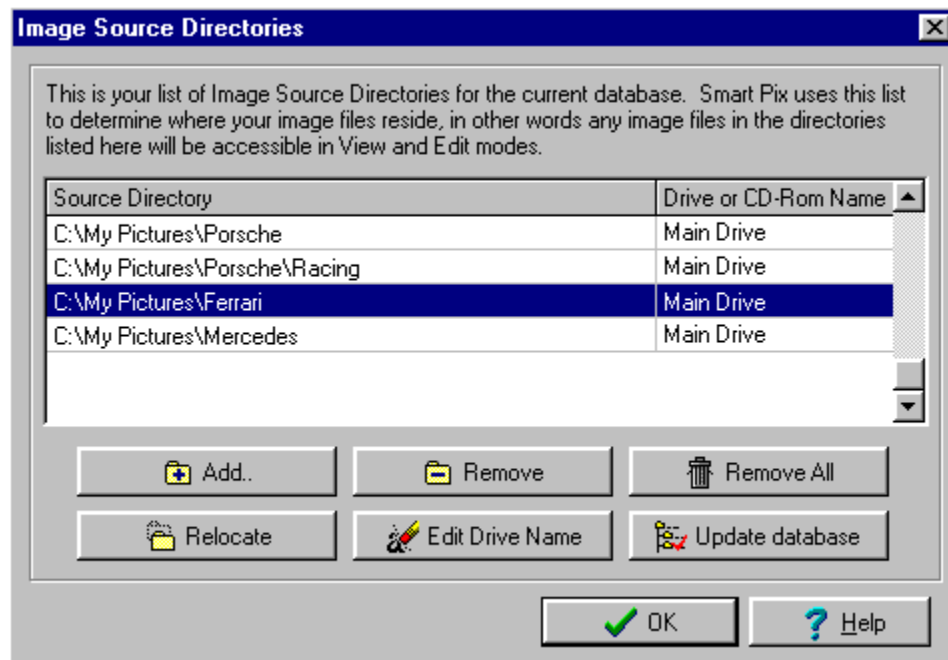
Assigning attributes need not be a chore either. If you already have your images organised into directories then Smart Pix lets you assign initial attributes to all files in each directory when you first insert them.

So the key to the database is:

1. Telling Smart Pix where your images are, i.e. nominating the folders on your computer with images as your Source Directories.
2. When you do this Smart Pix will create a list of all the files in your Source Directories
3. Adding attributes (keywords) to your files

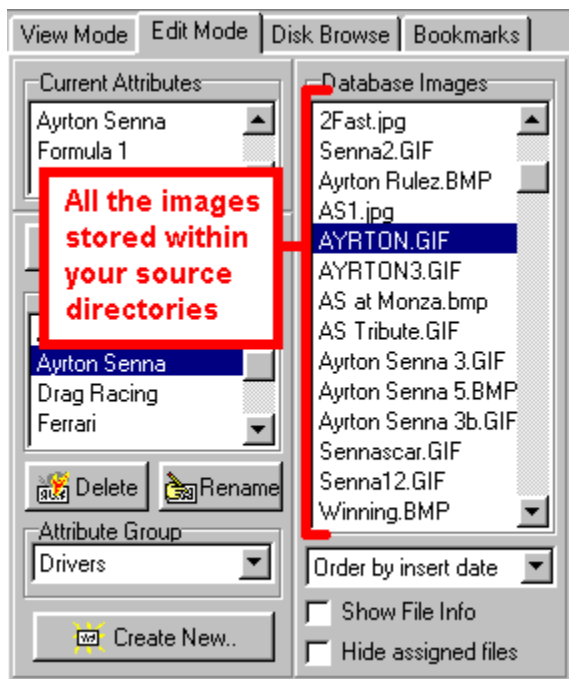
If you are still having trouble getting your head around it, **a good analogy** is a school pupil list. The headmaster (= you) gives her assistant a list of all the classrooms (= Source Directory list). The assistant (=Smart Pix) goes to each classroom and makes a list of all the students in the class (= list of image files). For each student you add a list of the subjects they take (= attributes). This is all punched into a computer so now the headmaster can easily create a list of all people who take 'French, English AND Latin', or 'Physics OR Chemistry', etc.

You can see and add to your list Source Directories list by selecting Database|Source Directories.



All the images in these directories can be viewed in View and Edit mode. These are the database modes.

- **View mode** is used for searching for images in your database by selecting the attributes you want to find.
- **Edit mode** displays all the files listed in your Smart Pix database, so you can add and remove attributes easily



What about Disk Browse and Bookmarks modes?

- Disk Browse mode is not a database mode, it doesn't care about what is in your database it just allows you to browse folders (like Windows Explorer) and see all the images in them.
- Bookmarks mode is also not a database mode, it stores a list of all the images you have 'bookmarked'. In other words, if you are in any mode and see a picture you want to come back to, you can just click bookmark, then if you go to bookmarks mode, you will see the images you have bookmarked.

Lesson 2: Thumbnails

For your database modes (View and Edit modes) Smart Pix creates thumbnails and stores them in the database, this allows for the quickest method of thumbnail display. The thumbnails are generally created when inserting new files, but if you did not select that option, you can create them later by selecting Database|Build Thumbnails (You will know if you have not created thumbnails because when you switch on thumbnail display in View or Edit mode you will only see a default (light bulb) thumbnail.

In the non-database modes (Bookmarks and Disk Browse modes) the thumbnails are created dynamically, that is as they need to be displayed Smart Pix creates them temporarily in memory. This is the best option on a fast computer. If you have a slower computer you can enable the option of using permanent thumbnails.

Lesson 3: Image Descriptions and Find

If you click on a file (in View or Edit modes) and select File|File Info you will see a blank description box. This can be used for creating an in-depth description for particular files. These descriptions can be viewed at any time by selecting a file and hovering the mouse over the file name area in the status bar. You can also locate words within these descriptions by selecting Find.

Lesson 4: Updating your Database

So, you've gone onto the 'net and downloaded 100 Pamela Anderson pics! Or you have deleted some old files to regain some disk space and didn't use Smart Pix! Oh no! Now, Smart Pix tells you it can't locate xyz.jpg and you can't access your new pictures. What to do? EASY, select Database|Update Database. Smart Pix will scan your Source Directories, adding references for new files and removing references for files that no longer exist.

Lesson 5: Attribute Groups

Once you have mastered Smart Pix and have 10000 of your favourite car pictures referenced, each with 10 or so attributes, you might find that your attribute list is too long and finding the one you desire too hard. For this Smart Pix has optional Attribute Groups. Attribute Groups allow you to hide all attributes under convenient heading so you only need to display the items you are looking for.

Lesson 6: Image Security

Naturally you don't want your kids stumbling across your Pamela Anderson pics, or you don't want

anyone mucking up your carefully set up Smart Pix database. For this, Smart Pix offers password protection, which limits access to your database to those people who know your password.

However this won't stop someone from browsing to your image directory and viewing the pictures with another application, so there are two image security options.

1. False extensions: Windows uses the extensions (that is the letters that follow the final dot in a filename, e.g. '.jpg' in 'myimage.jpg') to determine what kind of file it is. Smart Pix allows you to change the extension from an image extension to something innocuous. In this way if someone finds the files, they will not appear to be image files and clicking on them will not display the image. This offers a minimal level of security, which is enough to hide images from less advanced users.
2. Encrypted Database storage: For top security images should be stored within the Smart Pix database. The database is encrypted so your images can only be viewed within Smart Pix. Smart Pix will allow you to view and manipulate the images just as quickly and easily as if they were still in their folders. Combined with password access this offers the highest level of image security!

The easiest way to get underway with Smart Pix is to work through the items on the Getting Started dialog, just click the 'Lightbulb' icon on the toolbar.

Also:

- What is Smart Pix Manager?
- Smart Pix Manager Features
- Testing Smart Pix Manager Functionality



Testing Smart Pix Manager Functionality

Getting Started

If you click on Help|Getting started or press the light bulb button on the toolbar you will be presented with a dialog which guides you through the process of getting your Smart Pix software up and running.

Using as a simple image browser [BORING!]

1. Select Browse mode.
2. Choose a directory.
3. Select a file.
4. Zoom, perform slide shows, etc. as below.

To utilise the powerful cataloguing and search features of Smart Pix [COOL!]

Cataloguing functionality

1. Select Database|Source Directories
2. Click the 'Add' button
3. Select a directory where you have a set of image files
4. In the attributes type in some new attributes that these files have in common. Click OK.
5. Add some more directories.
6. Close the Options dialog, select the "Edit" tab to the left of the image window.
7. Go through your files adding new attributes specific to particular images (multiple assignment is OK, too).

Searching functionality

1. Select the View tab.
2. Highlight the attributes that you want to search on.
3. Click:
 - "Match all selected" to show images on your system which have all the selected attributes.
 - "Match any selected" to show files which have any of the selected attributes.
 - "Show all files" to display all files stored in your database.
4. Choose the order in which to sort your files.
5. Click search
6. A list of "hits" will appear based on your search.

Viewing functionality

- You can zoom in on an image by pressing '+', or if it is smaller than the viewing window you can stretch it to full window size by pressing 'Ctrl' and '+'.
- You can zoom out of an image by pressing '-' or you can shrink it to the windows size by pressing 'Ctrl' and '-'.
- If the image size is larger than the window you can scroll the image by using the numeric keypad, the scroll bars or dragging the image with the mouse.
- You can open images in a new image window by pressing 'N'
- You can view full-screen by pressing 'Space'.

- You can play the images in sequence by pressing 's' or View|Slideshow (delay between flip can be increased/decreased with the ',' and '.' keys).
- You can expedite JPEG load by switching fast on (toggle with the 'f' key)
- You can cancel a BMP or JPEG during loading by pressing the stop button.
- You can rotate the image by pressing the rotate button.

Also:

- What is Smart Pix Manager?
- Ten Minute Tutorial
- Smart Pix Manager Features

Using Smart Pix Manager

Smart Pix modes

Overview

Smart Pix has four modes:

- **View mode**

View mode is the one you are likely to use most often, it allows you to view all files within your database or perform AND/OR searches to view only specific kinds of files.

- **Edit mode**

Edit mode is used for adding and changing the attributes assigned to the files stored in your database.

- **Disk Browse mode**

Browse mode is for viewing the files directly on your hard drive, CD-ROM's etc.

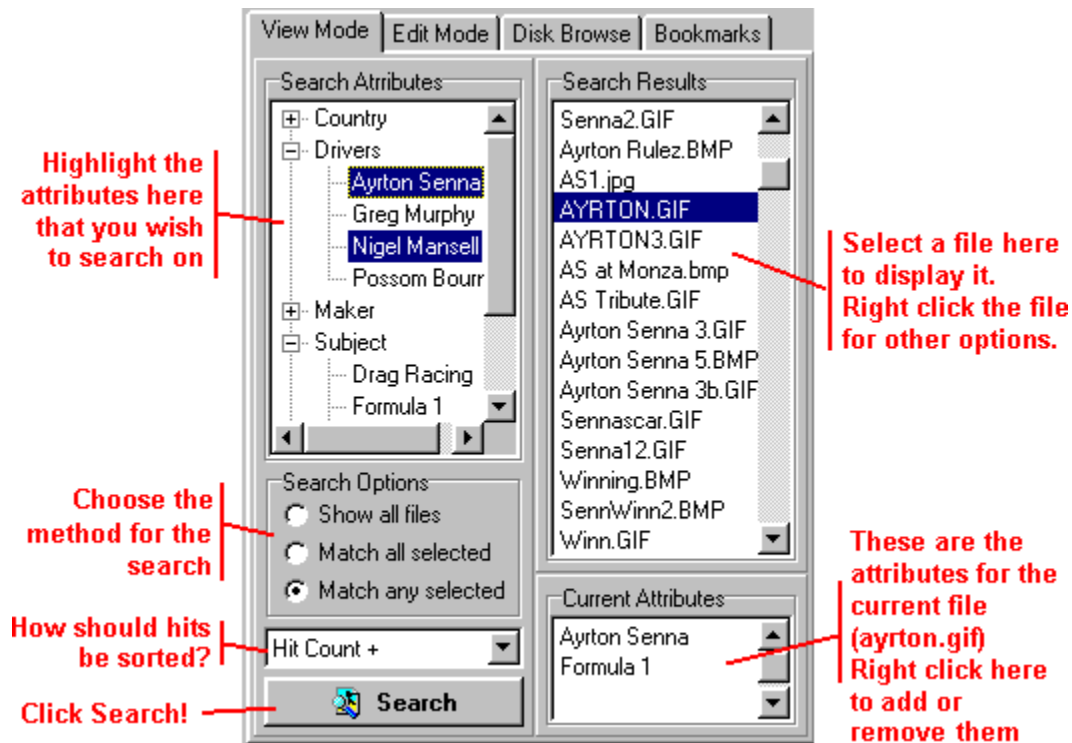
- **Bookmarks mode**

While browsing through your images in any of the other modes you may want to bookmark an image so you can come back to it later. In Bookmarks mode you can view the images you have tagged during this session or load a bookmark collection from disk.

You change the mode by selecting the relevant tab to the left of the image window.

View mode

View mode is for viewing images referenced by your database.



To search for files:

1. Select all the attributes that you want the returned files to contain.

The style in which the attributes are displayed will depend on whether you are using Attribute Groups. If you are not using attribute groups your attributes will be displayed in a long list, otherwise you will see a list of your attribute groups that expand to display the attributes of that group.

2. Click on:

- **"Match any selected"** if you want to view files that have any of these attributes (Boolean OR).
- **"Match all selected"** if you want to only retrieve files that have all these attributes (Boolean AND)
- **"Show All Files"** to display all files stored within your database.

For example, if you have a database of car images, where each image has an attribute for its type, colour and country of manufacture. If you have selected Red and Porsche and click on 'Match all selected' above it will return only red Porsches, if you choose 'Match any selected' it will retrieve all images of cars which are red or are Porsches, e.g. red Hondas, red Lotuses, green Porsches and blue Porsches.

3. Select the order in which to sort your hits. The options are:

- **Alphabetical:** Alphabetical searches are case sensitive, i.e. all files with a leading capital letter will appear before those with a leading small-case letter.
- **By Path:** Sorting by path merely groups the files into the order that the paths were entered into

the database, i.e. all files on C: drive may or may not appear before files in directories of D: drive.

- **Relevancy (only when using the 'Match Any' Search method):** Sorting by Relevancy ranks the files in order of the number of attributes matched in the search. I.e. those at the top have the most of the attributes you selected, those at the bottom have the least.
- **None:** Sorts them into the order that they were inserted into the database.

Note that all sort options have a Normal (+) and a Reversed (-) option, for example if you select Alphabetical (-) your images will be sorted in reverse alphabetical order (i.e. Z down to A).

4. Hit 'Search' to perform your query.

Normal viewing functions and file management tasks can also be performed. All panels support multiple selection.

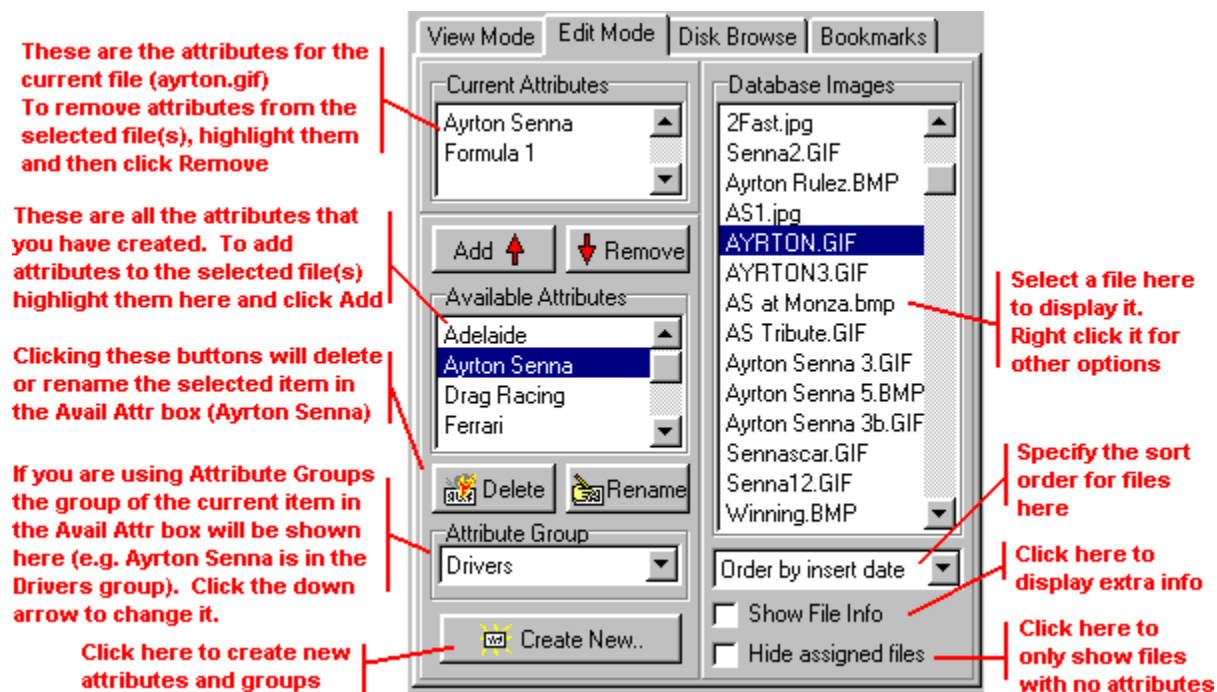
You can **add or remove attributes on the fly** by selecting files, right-clicking in the current attributes grid and selecting 'Add' or 'Remove'. It does not matter if some of the selected files already have the attribute you are adding, or don't have the attribute that you are removing, Smart Pix will only perform the function where necessary.

Also:

- Overview of Modes
- Edit mode
- Disk Browse mode
- Bookmarks mode

Edit mode

Edit mode is used for adding and changing the attributes assigned to the files stored in your database.



You are presented with a list all files in your database (in the centre panel). If you select a file then the left panel will display a list of current attributes assigned to that file and below this a list of all available attributes.

- To **assign an attribute** from the list to your file(s), select it in the Available Attributes table and click 'Add'.
- To **remove an attribute** assigned to your file(s), select it in the Current Attributes table and select 'Remove'.

If you wish you can add or remove multiple attributes. Also if you select multiple filenames in the file pane you will add or remove the attributes from all the selected files.

If you are using Attribute Groups then the current group for the selected attribute will be displayed at the bottom. You can change it by clicking the drop down arrow.

You can easily create, delete and rename attributes.

Other Options:

File Order

Files can be sorted in the following orders:

- **Alphabetical**
- **By Path:** This groups files by path and sorts them in the order that the source directory was entered into the database, i.e. files in directories of C:, for example, may or may not be grouped together.

- **Insert Date:** Files are displayed in the order they were inserted into the database.

Show extended info

Clicking this will display the file path, image dimensions and file size in columns to the right of the filename, you may need to resize the frame in order to see the complete path. You can also change the width of the database columns by hovering the cursor over the column titles until they turn into a drag icon and then making the column wider or narrower.

Hide Assigned Files

After you have performed an update you may want to view all files that lack attributes. By clicking this checkbox all files which have one or more attributes will be hidden and you can assign attributes to those that remain.

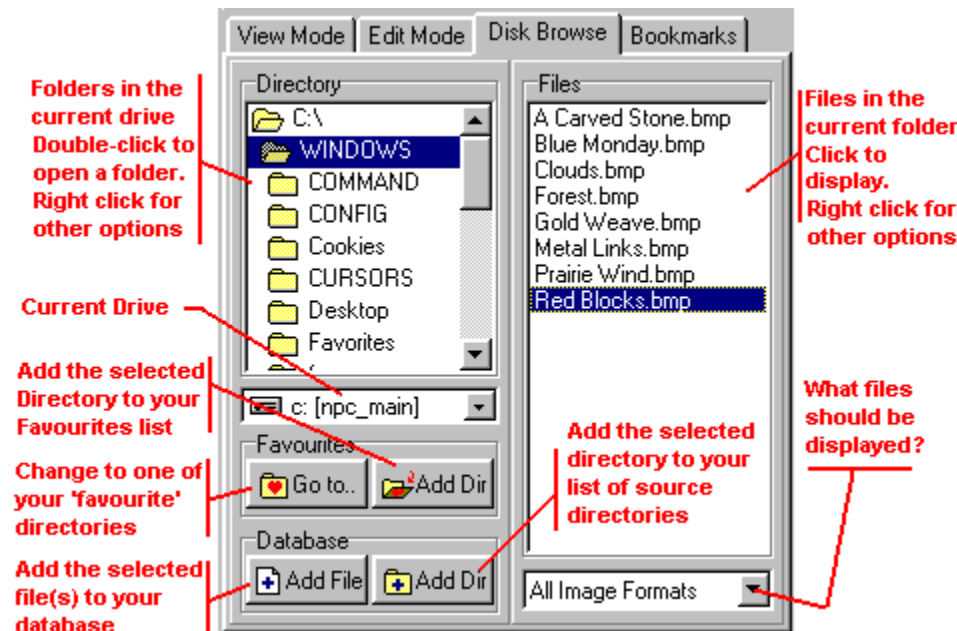
You can also perform normal viewing functions and file management tasks. All panels support multiple selection.

Also:

- Overview
- View mode
- Disk Browse mode
- Bookmarks mode

Disk Browse mode

Disk Browse mode enables you to browse the image files on your computer (irrespective of whether they have been entered into the Smart Pix database)



To go to a specific directory simply select the drive and drill down to the appropriate directory. In the centre panel you will see a list of all the image files in the directory and can view them by clicking on the file name

Beneath the Drive Selection box there are two panels for extra functions:

Favourites panel

'Go to..' This will allow you change your directory to one of your 'favourites' or edit your favourites list.

'Add dir' This will add the currently selected directory to your 'favourites'.

Database panel

'Add dir': adds the current directory and references to all the files it contains to your database.

'Add file' adds a reference the current file(s) to your database. If the directory which contains the file has not been named as a source directory you will be prompted to do so. If the current directory is not one of your source directories you will be asked if you want to add it to your list of source directories or move the selected files to one of your existing source directories.

You can also perform normal viewing functions and file management tasks. Most directory functions are available by selecting a directory and clicking on it with the right mouse button.

Note: If you wish to move, rename or delete files which are also contained in your database it is

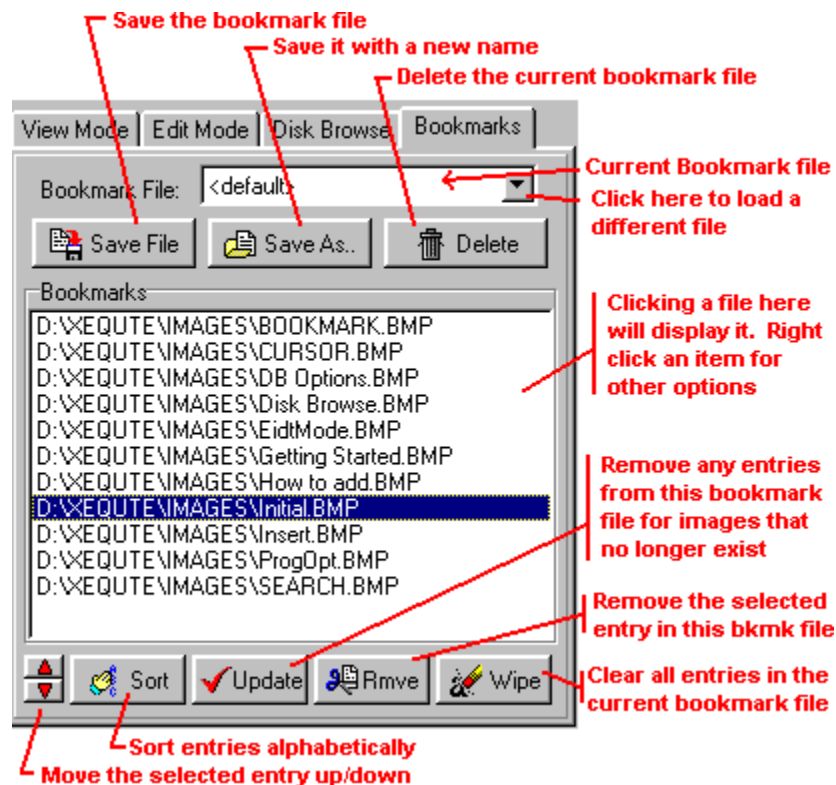
recommended that you perform the function in Search or Edit mode so that the references in the database will be updated at the same time. However if you perform directory functions such as moving a directory, Smart Pix will update your database entries if the directory is a source directory.

Also:

- Overview
- View mode
- Edit mode
- Bookmarks mode

Bookmarks mode

Bookmarks Mode is for viewing images that you have tagged during this Smart Pix setting or from a Bookmark collection that you have loaded.



The bookmark tab contains the following items:

BOOKMARK FILE FUNCTIONS:

- **Bookmark File**

This displays the current bookmark file, if you have not loaded a bookmark collection then it shows <default> meaning that it only contains bookmarks that you have tagged in this Smart Pix session. If you click on the down arrow on the right a list of all your bookmark files will be displayed, you can load a bookmark file by selecting it.

- **Save File**

This will save the current bookmark file to disk, if it is the <default> file you will be prompted for a file name. Using 'Save File' is usually unnecessary, as Smart Pix will prompt you to save the current bookmark file when closing (Note: you are not prompted to save the <default> file)

- **Save As..**

This allows you to save the current bookmark file with a new name; i.e. you might want to save a collection of favourite pictures for showing to a friend later.

- **Delete**

This will delete the current Bookmark file (not the images) from your hard disk.

BOOKMARK LIST

This is the list of all the bookmarks:

- that you have tagged in this session if it is the <default> file
- that are stored in the loaded bookmark file

BOOKMARK FUNCTIONS

- **Up/Down Buttons**

The small Up and Down buttons allow you to sort your slideshow into a preferred order. Select the file whose position you want to change and then use the buttons to move it to its new location. You can also drag items to reorder them.

- **Sort (toggle)**

By default Sort is not depressed and bookmarks are displayed in the order they were tagged or that you have put them in. If you press sort it will reorder alphabetically and while it is depressed newly added bookmarks will automatically be sorted.

- **Remove**

Remove deletes the current bookmark from the bookmark file. It does NOT delete the original file or the reference to the file in the database.

- **Update**

Update checks your bookmark file for links to images that no longer exist.

- **Wipe**

This clears all bookmarks from the list. It does NOT delete the original files, nor the references to the files in your database.

Normal file management and viewing functions can be performed, including slideshow.

Note: If you wish to move, rename or delete files which are also contained in your database it is recommended that you perform the function in Search or Edit mode so that the references in the database will be updated at the same time.

Also:

- Overview
- View mode
- Edit mode
- Disk Browse mode

Keys, Toolbars, etc.

Toolbar

Navigation Buttons:



First Image: Move to the first image in the file pane.



Previous Image: Move to the previous image in the file pane.



Random: Selects an image at random from the current directory/search



Next Image: Move to the next image in the file pane.



Last Image: Move to the last image in the file pane.

Display Buttons:



Thumbnails: Displays image thumbnails (toggle)



ThumbViewer: Displays all images in the current mode as thumbnails on a new form

Image View Buttons:



Zoom in

Ctrl + Click: Stretch to Fit: Stretches the image to take up all available window space (Toggle).



Zoom out

Ctrl + Click: Shrink to Fit: Shrinks the image to fit in the image window (Toggle).



Full-screen: Shows Image in Full-screen mode (Toggle).



Open in New Window: Launches the image in a new image window

Ctrl + Click: Close all image windows: This will close all Smart Pix windows except the main one

Image Load Buttons:



Cancel Image Load: Stops loading of current image (or forces a reload)

Ctrl + Click: Smart Pix Reset: This is similar to the doing a reset with the 'Esc' key but also resets some internal functions. Use with moderation.



Fast mode: Reduces the image size to speed up JPEG loading.



Slideshow: Starts or stops the slideshow (Toggle).

File Function Buttons:



Save as/Convert: Allows you to save changes to the current file, save it to a new name or convert it to a new image format (also updates file reference) or set it as the current Windows wallpaper.



Rename: Allows you to rename the selected image(s). If you are in Disk Browse mode and a directory is selected then it will allow you to rename the directory.



Move/Copy: Allows you to move or copy the selected image(s) to a new location (also moves file reference).



Delete: Deletes the selected image(s) and/or reference to the image(s) in the Smart Pix database. If you are in Disk Browse mode and a directory is selected then it will allow you to delete the directory.



Print: Prints the current image.



Bookmark Image: Adds selected image(s) to the current bookmark list.

Special Function Buttons:



File Information: Displays information about the image such as file size, colour depth and dimensions. In View and Edit modes it also displays and allows you to change the description for the file.



Find: Allows you to locate files within your database with file names or descriptions that match the text you supply.



Edit Image: launches the selected image(s) into your specified external editor.

Application and Database Configuration:



Source Directories Dialog: Displays your current list of Image Source Directories and lets you alter them and add new ones.



Thumbnail Builder: Checks for database images without thumbnails and creates them where needed



Update: Checks your source directories for new or deleted files.



Options: Allows you to set application options.

Other:



Getting Started: Displays the "Getting Started" dialog.



About Box: Displays the About Box and Database information.



Help: Displays this help file.



Exit: Quits Smart Pix

Note: You can quickly hide the toolbar by double clicking on a blank area or toggle its display by pressing Ctrl+T.

Also:

- Menu Bar
- Keyboard Shortcuts
- Mouse Shortcuts
- Toolbar in New Image Windows
- Status Bar

Menu

DATABASE MENU (database and program functions)

Database Info	Settings and statistical information for the current database

<u>New Database</u>	Allows you to create a new database
<u>Open Database</u>	Allows you to open an existing database
<u>Reopen</u>	Provides a list of recently used directories to open
<u>Manage Databases</u>	Allows you to move or delete databases

<u>Source Directories:</u>	Displays your current list of Image Source Directories and lets you alter them and add new ones.
<u>Build Thumbnails:</u>	Checks for database images without thumbnails and creates them where needed
<u>Update Database</u>	Checks your source directories for new or deleted files
<u>Options</u>	Allows you to set program options

Exit	Closes Smart Pix Manager

FILE MENU (functions related to the selected images)

<u>File Information:</u>	Displays information on the selected image and allows you to view and edit the description for the file
<u>Find:</u>	Allows you to locate files within your database with file names or descriptions that match the text you supply.

<u>Save as/Convert:</u>	Allows you to save changes to the current file, save it to a new name or convert it to a new image format (also updates file reference) or set it as the current Windows wallpaper.
<u>Rename</u>	Rename current file(s) and/or reference(s)
<u>Move/copy</u>	Move or Copy current file(s) and/or reference(s)
<u>Delete</u>	Delete current file(s) and/or reference(s)
<u>Print</u>	Print current file(s)
<u>Bookmark Image</u>	Adds selected image(s) to the current bookmark list

EDIT MENU (functions for manipulating the displayed image)

Undo Changes:	If you have altered the image this will allow you to remove the changes.

Copy to Clipboard	Copies the currently displayed image to the Clipboard
<u>Open in Editor</u>	Launch current file(s) in an external editor
<u>Effects:</u>	Allows you to perform Resize, Rotation, Flipping and Colour effects on the displayed image.

<u>Acquire from Scanner:</u>	Allows you to insert files into your database or hard drive by scanning them on a Twain compliant scanner

VIEW MENU (functions and settings for changing the display of images)

<u>Zoom</u>	Increase or decrease the image size
<u>Full Screen View</u>	Display Image in full-screen view (toggle)
<u>Open in New Window:</u>	Launches the image in a new image window

Slideshow

Display the images in an automated sequence (toggle)

Fast Mode

Reduce image size to expedite loading (toggle)

Shrink to fit

Reduce image to fit in available window (toggle)

Stretch to fit

Enlarge image to take advantage of available window space (toggle)

THUMBNAIL MENU (Settings and functions related to Thumbnails)

Display thumbnails:

Display image thumbnails (toggle)

ThumbViewer:

Displays all images in the current mode as thumbnails on a new form

Thumb Sheets and File Lists:

Allows you to export the files in the current mode to File Description text files, Thumb image sheets, or HTML thumbnail indexes

Print Thumbnails:

Will print thumbnails of all images in the current mode to your printer

WINDOW MENU (for manipulation of the program Windows)

Windows Settings

Allows you to toggle the display of the Menu, Toolbar and status bar

Close all Windows

This will attempt to close all windows except the main one

Add all to Bookmarks

This will add the filename of each open image to the current bookmark list

Window 'xyz'

A list of all open windows is shown. Selecting an item will display it

HELP MENU (program help and registration information)

Contents

Show Help contents

Search for Help on..

Search for keywords in Help

Keyboard Shortcuts

Information on the Smart Pix keys

Troubleshooting FAQ

Provides some answers to Frequently Asked Questions

Go to the Xequte site

Opens your browser at www.xequte.com

Register Online

Opens your browser at our online registration page

Tip of the Day

Displays a random Tip of the Day

Getting Started

Display the getting started dialog

Registration Info

Information on registering Smart Pix

About..

Information about Smart Pix

The menu bar is largely unnecessary and you may want to hide it to save screen real estate. Most functionality is available with the toolbar and all buttons have tool tips that appear when you hover the mouse over them so you can rapidly learn their function. You can toggle its display by pressing CTRL+M

Also:

- Tool Bar
- Keyboard Shortcuts
- Mouse Shortcuts
- Status Bar

Keyboard Shortcuts

Navigation:

Cursor Down/Up	Next/Previous File
Home/End	First/Last File
8/2/4/6	Scroll Image Up/Down/Left/Right
PageUp/PageDown	Moves to the previous/next screen of files
* or /	Select file at random

Viewing:

Space	Toggles <u>Full-screen</u> view On/Off
-	<u>Zoom out</u>
Ctrl and '-'	Toggles <u>shrink to fit</u>
+	<u>Zoom in</u>
Ctrl and '+'	Toggles <u>stretch to fit</u>
0 on Numeric Keypad	During Image load: Cancel current load While inactive: Reloads current image
F	Toggles <u>Fast mode</u>
A	<u>Hide everything</u> except the image (toggle)
N	Opens the image in a <u>new image window</u>
Ctrl + A	Selects all files in the current mode
W	Toggles through all open <u>image windows</u> .
Shift + W	Switches to the main Smart Pix window
Ctrl + W	Close all <u>image windows</u> (except the main one)
T	Display the <u>ThumbViewer</u>
, (comma)	Decrease GIF Animation delay
. (period)	Increase GIF Animation delay

Slideshow:

S	Toggles <u>Slideshow</u> On/Off
, (comma)	Decrease delay between image flip
. (period)	Increase delay between image flip

File Management:

Delete	<u>Delete</u> image(s) reference and/or original file, or a directory.
Ctrl and S	<u>Save or Convert</u> the current image
E	<u>Launch the image in an external editor</u>
R	<u>Rename</u> File/Directory
B	<u>Bookmarks</u> the current image(s)
Ctrl and P	<u>Print</u> file or thumbnails
(Ctrl and) X	<u>Move</u> the selected image(s) (Ctrl key is optional)
(Ctrl and) C	<u>Copy</u> the selected image(s) (Ctrl key is optional)
Z	<u>Create new attribute or attribute group</u>

Other:

F5	Update the file display (in Disk Browse Mode)
F1	Help (context sensitive)

Application View Settings:

Ctrl+M	Toggles display of <u>menu</u> (Not available in Full Screen mode)
Ctrl+T	Toggles display of <u>toolbar</u>
Ctrl+B	Toggles display of <u>status bar</u>
Esc	Reset view options to default
Backspace	Minimises the application (Boss key)

Also:

- Tool Bar
- Menu Bar
- Mouse Shortcuts
- Status Bar

Mouse Shortcuts

Mouse Drag and Drop Shortcuts:

Smart Pix supports drag drop integration with Explorer and any other OLE compliant applications:

Dragging from Smart Pix:

- Dragging from the file box in Disk Browse or Bookmarks mode will copy, move or link to a file
- Dragging from the file box in View or Edit mode will copy or link to a file
- Dragging from the directory box in Disk Browse mode will copy, move or link to a directory

Dragging to Smart Pix:

- Dropping a file on the file or directory box in Disk Browse mode will copy, move or link to a file or directory
- Dropping files or directories onto the file box in Edit mode will add them to the database
- Dropping files onto the file box in Bookmarks mode will create bookmarks to the files
- Dropping a file on the Smart Pix image window or title bar will display the file

Dragging within Smart Pix:

- Dragging and Dropping Bookmarks within the Bookmark box will allow you to change their order
- Dragging and Dropping files and directories within the directory box and between the directory box and the file box will move or copy the file or directory.
- Dragging and Dropping attributes from the Available Attributes box to the Current Attributes box will add the attribute(s) to the selected file(s).
- Dragging and Dropping attributes from the Current Attributes box to the Available Attributes box will remove the attribute(s) from the selected file(s).

Mouse Doubleclick Shortcuts:

- On the image Hide everything bar the image
- On a filename Display the image in Full-screen mode
- On the Toolbar Hide the Toolbar
- On the Status Bar Hide the Status Bar
- On an attribute (in View mode) Perform Search
- On an attribute (in Edit mode, current attributes) Remove attribute from selected file(s)
- On an attribute (in Edit mode, available attributes) Add attribute to selected file(s)
- On a directory (in Move/Copy Dialog) Move or copy to selected directory
- On an image in a new image window Toggles Simple Window mode
- On a filename in Windows Explorer Will display the file in Smart Pix, even if Smart Pix is already running (Note: Only if you have set Smart Pix as the default viewer for that file type).

Mouse Wheel Shortcuts:

(requires compatible mouse, such as Microsoft Intellimouse, and the 'Enable wheel mouse' setting

selected under Options)

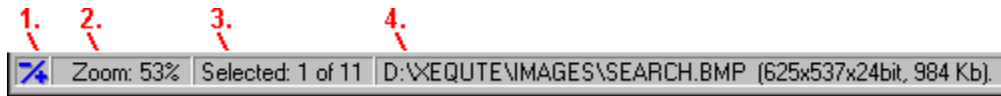
- Over the Main Window: Browses forward/backward through files
- During a slideshow: Increases/decreases the flip delay
- Over the Thumbnail Viewer: Scrolls the window

Also:

- Tool Bar
- Menu Bar
- Keyboard Shortcuts
- Status Bar

Status Bar

The status bar is very handy, though if you wish to save screen real estate you can toggle its display by pressing Ctrl+B or quickly hide it by double-clicking on it.



It has four sections:

1. Zoom Options

The **leftmost section** will display a '-' symbol if you have shrink to fit enabled, a '+' symbol if you have stretch to fit enabled, or both symbols if both are enabled. If you click on this section you can toggle these settings or perform zoom.

2. Zoom Factor/Progress Display

The **second section** displays the zoom factor of the current image. Also during image loading it displays a bar graph showing load progress for the current image. Finally, during other functions, such as rotation, directory deletion the bar graph will display their progress.

3. File Selection Information

The **third section** displays:

- Normally: how many files are currently selected of the total number of files available.
- In slideshow or Full-screen mode: which file is currently selected of the total number of files.
- When changing slideshow delay: If you change the slideshow delay (such as with the ',' and '.' keys) it displays the number of seconds between image flip.

4. File Information

The **rightmost section** displays the name and full path of the selected file, as well as its dimensions in pixels and size in bytes or Kbytes (in brackets).

If you have 'Fast' selected it will also display how the image has been reduced, i.e. Fast: Halved means that half of the image information has been lost (i.e. the image has been displayed at half size).

Hovering the mouse over the file information section will give you the description of the image.

Also:

- Menu Bar
- Tool Bar
- Keyboard Shortcuts
- Mouse Shortcuts

Viewing Images

How to View Images

Navigation:

- **Down** cursor takes you to the **next file** in the file list box
- **Up** cursor takes you to the **previous file** in the file list box
- * or / key selects a file at **random** from the list box
- **Home** takes you to the **first file** in the file list box
- **End** takes you to the **last file** in the file list box
- **PageUp** takes you **back several files**
- **PageDown** takes you **forward several files**
- You can also **browse forward/backward** through images using a **mouse wheel** (you need to have selected the setting under Options)

Full-Screen Mode

Press 'Space' for Full-Screen Mode or 'A' to hide everything bar the image.

Image Zooming

You can zoom in and out of an image using the Zoom In and Zoom Out buttons or the '+' and '-' keys. The current zoom factor is displayed in the left panel of the status bar. Image zoom is generally performed in steps of 25%, however if you select View|Zoom|Custom or click on the zoom section of the status bar then you can enter an exact zoom factor. Note that unlike the Stretch to fit and Shrink to fit options below, your zoom factor is only kept for the current image and will return to the default for the next viewed image.

Stretch to Fit

If the stretch option is enabled then an image smaller than the window size will be stretched to take up all available window space (while keeping the aspect ratio). Stretch to fit can be toggled on or off by pressing Ctrl and '+' or by clicking on the zoom section of the status bar or View|Stretch to fit. If Stretch to Fit is enabled a '+' will appear in the leftmost section of the status bar.

Shrink to Fit

If the shrink option is enabled then an image larger than the window size will be reduced to fit in the available window space (while keeping the aspect ratio). This can be toggled on or off at any time by pressing Ctrl and '-' or by clicking on the zoom section of the status bar or View|Shrink to fit. If Shrink to Fit is enabled a '-' will appear in the leftmost section of the status bar.

Image Scrolling

If the image is larger than the window then scrollbars will appear. You can scroll the picture by:

- Using the scroll bars
- Dragging the image with the mouse
- Using the cursor keys on the numeric keypad **with NumLock ON** (i.e. 8/2/4/6 is Up/Down/Left/Right respectively)

Cancelling an Image Load

You can cancel the loading of an image by pressing the Stop button or 0 on the numeric keypad. If you have the 'Selecting new image cancels loading' option set under Options then you can also cancel load by choosing a new image.

Other:

- Opening an image in a new image window
- Expediting image loading
- Slideshow
- Printing Images



Full-Screen Mode

Pressing the full-screen button or space switches to full-screen mode. Full screen mode is used once you have performed your image search or moved to a directory where there are images you wish to view.

In full-screen mode the application is maximised (unless you have disabled this under Options) and the title bar, the menu bar and the search or view, edit or browse mode panels are hidden, so that you take maximum advantage of your screen size.

Another key has a similar function, 'A' enables Full-screen mode (if you are not in Full-screen mode already) and **hides everything bar the image**, pressing 'A' again returns Smart Pix to normal mode. Double-clicking the image has the same effect as the 'A' key.

You can still browse through the current directory or search hits by using the keys or buttons and all normal functions are available. You can determine your current position in the directory or database from the second status bar panel, it will display the current file number of the total available (e.g. File# 6 of 40 means that currently the sixth file is displayed of 40 in the directory/database).

By default (toggleable under Options) **Smart Pix stores separate settings** for fast mode, tool bar visibility and status bar visibility, in this way you can have images always displayed half size/double speed (using fast mode) in normal mode but full size in full-screen mode. Note that whatever your setting the menu bar will always be hidden in full-screen mode.

Other Viewing Information



Opening an Image in a New Image Window

Smart Pix allows you to launch your current image into a new window by clicking the 'Open in new window' button or pressing 'N'. Using a new window allows you to have multiple images displayed at once and saves reloading an image if you want to return to later.

If you launch a new image window before loading has been completed, the image will be reloaded in the new window and loading cancelled in the main window. Only one image can be loaded in a secondary window at one time, a beep will alert you if you try to launch a new image window while another image window is loading.

New image windows support most viewing functions of the main window except stretch to fit. They do not support file management functions such as move, delete, etc.

The toolbar is somewhat different from that on the main window.

Simple Window Option:

If Simple Window is enabled then Image windows will not have a toolbar, will have a smaller caption bar and will not appear as an icon on the toolbar. This can be toggled by double clicking the image window. Your Simple Window setting is remembered when you save your preferred settings.

Saving your preferred settings

You can save your default settings for window size, 'Shrink to Fit' and Simple Window by right-clicking the image and selecting, 'Save current settings as default'. All new windows will use these settings. However if you have selected 'Resize new image windows to fit image' under Options then your window size settings will be ignored.

Manipulating Image windows

W	Toggles through all open image windows (including the main window).
Up/Down Cursor	Toggles through all open image windows (excluding the main window).
Shift + W	Switches to the main Smart Pix window
Ctrl + W	Close all image windows (except the main one)

Also:

- Toolbar for New Image Windows
- Other Viewing Information

Image Window Toolbar

Window Navigation:



Previous Window: Will display the previously viewed image window



Random Window: Will randomly select an image window and display it



Next Window: Will display the next image window



Main Window: Will display the Main Smart Pix Window

Image View Buttons:



Zoom In: Enlarges the image



Zoom Out: Reduces the image

Ctrl + Click: Shrink to Fit: Shrinks the image to fit in the image window (Toggle)



Cancel load: Cancels loading of the JPEG image

New Window Functions:



Add all to Bookmarks: Adds the filenames of all open image windows to the bookmarks list



Print Image: Prints the image to your printer, automatically selecting an orientation (portrait or landscape) to obtain the largest picture.



Simple Window: Hides the Toolbar, makes the caption narrower and does not give the window its own icon in the task bar



Save Settings: Saves the current settings for Simple Window, Stretch to Fit and Window size as the default for new windows

Other:



Help: Displays the New Image Window Help page



Close: Closes this image window



Close All: Closes all image windows except the main Smart Pix window

Back to [New Image windows](#)



Running slideshows

The slide show function flips through your files automatically at specified delay in a specified order.

Start the slide show by pressing View|Slideshow, pressing the slideshow button, or the 'S' key. This will display the slideshow toolbar (not displayed in Full-screen mode).

Slideshow Toolbar:

- The first three buttons determine the order in which the files are displayed, forward, reverse or random order respectively.



Display images in a forward sequence



Display images in a reverse sequence



Display images in a random order

- The slide bar and display allow you to set the delay between flip.



Please note that this does not include the load time, i.e. if your delay is 1 sec and your file takes 1 sec to load then in actuality the delay was 2 seconds.

The delay changes in increments of 1 second from zero to ten seconds, and in increments of 5 seconds after this.

You can change the delay during slideshow by moving the slide bar, rotating the wheel on your mouse (if you are using a compatible mouse) or pressing "," or "." (i.e. these transcribe to the < and > keys) to decrease and increase delay, respectively. When you are in full-screen mode you can determine the new delay setting by checking the second status bar panel.

- Continually Loop slideshow (toggle).



The final button is loop. If this is not depressed then once the slideshow reaches the first file in reverse mode or the last file in forward mode it stops. In other words, enabling loop allows the slideshow to continue indefinitely.

You can pause or stop the slide show at any time by pressing the 'S' key, selecting View|Slideshow or pressing the slideshow button.

Slideshow settings are saved at shutdown. You can reset the slideshow settings by pressing Ctrl as you press the slideshow button.

You can also switch between full-screen and normal mode at any time by pressing space.

Other Viewing Information



Displaying Images more quickly

If you enable Fast Loading by pressing the fast button on the toolbar or View|Fast Loading then images will be loaded more quickly with some degradation in image quality. The visual effect of this depends on the image type and options.

- **JPEG Images**

JPEG loading is expedited by reducing the amount of image information which is loaded (the practical effect being that the image will be displayed half or quarter size). The exact effect of enacting Fast mode can be set under Options.

- **Other Image Types**

Other formats will generally be loaded more quickly with a slight degradation in image quality. Not all formats support fast loading, those that do not will be loaded normally.

When editing/manipulating images it is recommended you disable Fast Loading.

If you do not have 'Use same settings in Normal and Full Screen mode' set to true under options then Smart Pix will store your settings for Fast mode in both Normal and Full screen mode.

Other Viewing Information



File Information

This dialog displays information on the image such as its dimensions and colour depth.

Image Description

If you are in View or Edit modes you can also see and change any description for the file. Image descriptions can be a maximum of 255 characters (approx. 35 words) and can also be viewed by hovering the mouse over the filename in the status bar after an image has been displayed.

Note that even if you have multiple files selected **the description will only be added to the current file**. If you wish to assign a description to **multiple files**, right-click the selected files and choose File Description instead. The new description will be added to all selected files. If you clear the description and click OK the descriptions will be removed from all selected files.

You can also use this description for [finding specific files](#) within your database.

Other Viewing Information



Printing Images and Thumbnails

Pressing the print button allows you to:

- Print the currently displayed image
- Print thumbnails for all images in the current mode

Printing Images:

Smart Pix will print the currently displayed image.

Options:

- **Automatically choose best orientation for printing**

If you select this option then Smart Pix will ignore your Landscape or Portrait setting and automatically choose the orientation that delivers the largest image

Image printing may take quite a while. Print time depends on:

- How large the image is. A small picture prints faster than a large one.
- The speed of your computer and printer, amount of memory, etc.
- The complexity of the image being printed, how many colours it contains, etc.
- The speed of your watch.

Printing Thumbnails:

Smart Pix will print thumbnails for all images in the current mode. The number of thumbnails printed per page and their size is determined by the following setting:

- **Number of thumbnails**

This setting will determine how many thumbnails are placed across (horizontally along the page) and down (placed vertically down the page) the page. The higher the setting, the more thumbnails will be displayed, but the smaller they will appear.

The product of number across by number down determines how many thumbnails will appear on each page.

Thumbnails can also be [exported to images and HTML files](#).

Other Viewing Information

Working with the Smart Pix Database

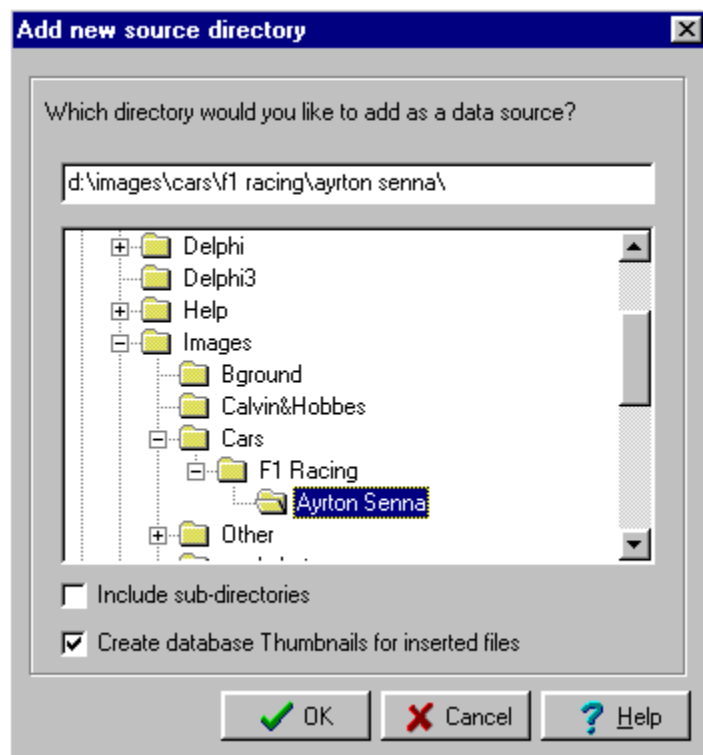
General Usage



Adding a new source directory

You can add a source directory by opening the Source Directories dialog (Database|Source Directories) and clicking 'Add..', or by dragging a directory from Windows Explorer and dropping it on the file box in edit mode.

1. You are presented with a directory dialog box.



- In the directory section select the directory which you wish to add to the database. Note: Only references to the files are added, not the files themselves (unless you have selected the 'Store files in database' option)

Options:

- **Include Sub-directories**

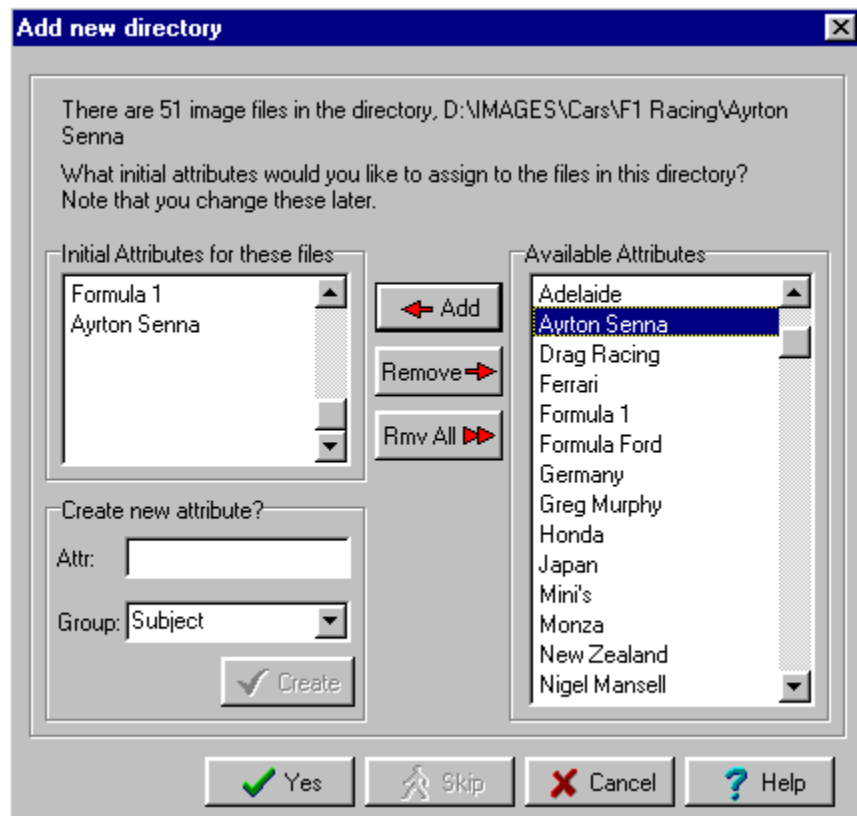
If you wish Smart Pix to add references to files in the child directories of this folder select the 'Include sub-directories' check box.

- **Create thumbnails for inserted files**

If this is selected then Smart Pix will create a thumbnail for each image that is inserted. While this option is the most convenient, it is actually more efficient to insert all your images without this option and then use the thumbnail builder to create all the thumbnails.

Click OK to proceed.

2. You are presented with an attributes dialog.



The second dialog will show how many image files are in the specified directory. You can now specify which initial attributes should be assigned to files in this directory.

- You are recommended to add initial attributes for files in this directory (does not include the sub-directories). E.g. if all the pictures are of red, German sports cars, then add the 3 attributes, "German", "red", and "sports car".

In the Assign default attributes section choose attributes from the available attributes and click "Add", or type in a new attribute and click the "tick" button. You can add as many attributes as you like.

If you are using Attribute groups then you can select a group for your new attribute or type in a new group.

Press OK to commence insertion.

If you have selected 'Include sub-directories' you will be prompted with each sub-directory to confirm its insertion and select initial attributes. You can choose:

- Yes: Current directory will be added
- Skip: Current directory will be skipped (but will keep processing sub-directories)
- Cancel: Current directory will not be added and Smart Pix will stop scanning for new sub-directories.

3. You are presented with an Insertion information dialog

A progress report will provide feedback as database references are added for each file in the directory. If you click cancel during this process it will delete the file references it has already added and then remove the directory from the database.

Note that as Smart Pix is only storing references to the location of the files, if you move or delete a file in an application other than Smart Pix (e.g. Explorer) it will no longer be accessible by Smart Pix (Though you can perform an update to correct this).

Other Source Directory Information

Maintaining your source directories

Your Source Directories dialog (Database|Source Directories) contains a list of all directories you have nominated as image source directories for the current database.

Adding Source Directories

To add new directories click add. This will take you to the Add Directory dialog.

Removing Source Directories

To remove a directory from the database and all references to the files it contains (and all the references to the attributes that these files have), click Remove (it does not delete the actual directory from your hard drive only the reference to the files in it from your Smart Pix database) You can add them back again later by clicking "Add.." however you will need to re-assign their attributes.

If you are using:

- **False extensions for image files:** When you remove this source directory any images referenced by the database from this directory will be renamed to their original names and removed from the database.
- **Database Image Storage:** When you remove this source directory any images stored in the database that are originally from this directory will be extracted from the database and saved back to the directory.

If you wish to remove this source directory but want to retain its images in your database use the relocate function instead.

Note: when deleting directories in Disk Browse mode Smart Pix will automatically remove your source directory reference to it (after confirming with you)

Relocating Source Directories

If you have renamed a directory or moved it from one drive/location to another, you can use the "Relocate" button to point Smart Pix to the new location of the directory and save you from reloading its files and re-assigning their attributes.

If you have moved the directory in Disk Browse mode Smart Pix will have automatically updated your database reference.

Edit Drive Name

For each of your Source Directories, Smart Pix stores a drive name, this is used so that when the file cannot be located Smart Pix can advise you which CD-ROM or other removable device to insert. By default Smart Pix uses the volume name of the drive, although when inserting a CD-ROM directory Smart Pix will prompt you for a name for the CD-ROM, if you have the relevant option set.

You can change the drive name for any source directory by selecting it and then clicking the 'Edit Drive Name' button and entering a new name. You will be prompted as to whether you want to add this new name for all source directories on that drive or CD-ROM.

Deleting All/Purging your database

If you want to purge all your database files and start afresh then click on 'Remove All'. There is absolutely no way to undo a database purge, do not select this option lightly.

If you are using:

- **False extensions for image files:** Purging your database will leave all image files referenced by Smart Pix with your chosen extension so you will not be able to view them. Before deletion you should first convert your storage method back to Normal, this will rename all files to their original extension.
- **Database Image Storage:** Purging your database will also **delete all images** stored in your Smart Pix database! If you want to keep these images but still purge your database, you should first convert your storage method back to Normal, this will save all files to their original locations.

NOTE: If you have added new files to one of your source directories and want these to be available to Smart Pix do not re-enter it as a source directory, simply select Database|Update to realign the database and your source directories.

Working with Attributes

Attributes can be added or removed from files in either of the database modes (View or Edit modes)

Creating Attributes

You can create new attributes by clicking on the 'New..' button in Edit mode or right-clicking the current attributes box in View mode and Selecting 'New..'

Deleting Attributes

Clicking the 'Del' button below current attributes will remove the currently selected attribute (and all references to it) from your database. Attributes can only be deleted from the Available Attributes panel.

Renaming Attributes

To rename an attribute select it in the Available Attributes box and click Rename.

Note that all files that reference the attribute will continue to reference it even after it is renamed (i.e. if an attribute is called 'plants' and you rename it to 'Fauna' then all images that had the attribute 'plant' will now have the attribute 'Fauna' instead).

Once you have finished renaming your attributes deselect the 'Name' button and the change will be propagated throughout the database.

Changing Attribute Groups

If you are using Attribute Groups you can change the group that an attribute belongs by selecting the attribute(s) in the available attribute box and clicking the drop down arrow of the Attribute Group box and selecting a new group

Other:

- Creating New Attributes
- Using Attribute Groups

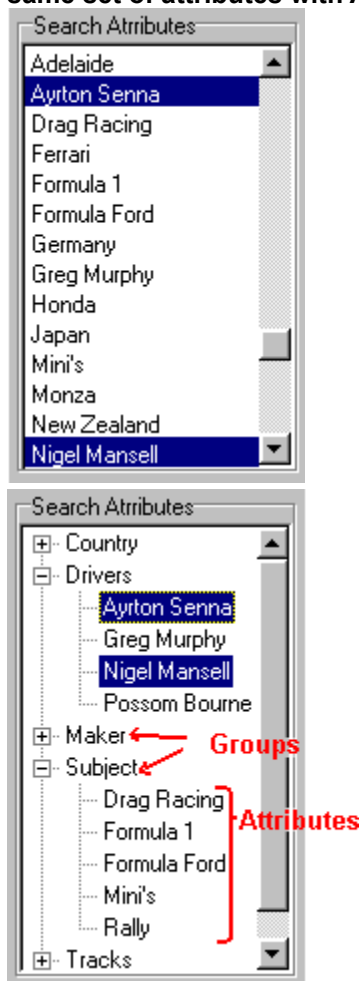
Using Attribute Groups

If you have a large number of attributes then you are advised to use attribute groups. Attribute groups allow you to categorise your attributes so you can display only those attributes relevant to a particular search while in View mode.

For example, if you have a database categorising cars and have attributes for car type, colour, country of manufacture, engine size and Maker then you may want to assign each of your attributes to groups of the above names, for example you might assign 'Germany', 'Japan' and 'Italy', to the attribute group 'Country'..

Then instead of seeing a list of 30-40 attributes in View mode you only see the attribute groups and can expand them to see the attributes you are interested in.

Below: An example set of attributes where Attribute Groups are not being used, and (right) the same set of attributes with Attribute Groups implemented



How to Enable Attribute Group Support

Attribute Group support can be enabled or disabled under Options (Database settings). Because it is a database setting then for each database you can choose whether or not to display Attribute

Groups.

Adding New Attribute Groups

You create new attribute groups the same way you create new attributes, that is, by clicking 'New..' in Edit mode and entering any attributes you want to add.

Assigning Attributes to Groups

In edit mode when you select an attribute in the Available Attributes box then the group that it belongs to is displayed in the Attribute Group box at the bottom. If the attribute has not been assigned to a group it will shown as the group '<none>', if you select multiple files then the box will appear blank. You can select a new group by clicking the down arrow on the Group box and choosing the one you want. If you have multiple attributes selected in the Available Attributes box then all attributes will be assigned to the new group.

Note that if you have any attributes that you have not assigned to an attribute group then these will be displayed under the item 'Other' when in View mode. 'Other' will appear as the final attribute group and is a special listing that just contains unassigned attributes. If you already have a group named Other then you will see two listing for 'Other', with the first being the group you created and the second containing unassigned attributes.

Renaming and Deleting Attribute Groups

You can rename and delete attribute groups in the 'New..' dialog (by clicking 'New..' in Edit mode). Select the item in the Current Attribute Groups box and click Rename or Delete.

Other:

- [Creating New Attributes](#)

Creating New Attributes and Attribute Groups

Attributes and Attribute Groups can only be created with the 'New..' dialog, this can be displayed by clicking on the 'New..' button in Edit mode or right-clicking the current attributes box in View mode and Selecting 'New..'

To create a new Attribute

1. Type the attribute into the box, 'New Attribute'
2. If you are using Attribute Groups then select a group from the dropdown list or enter a new one.
3. Click Create

To create a new Attribute Group

1. Type the attribute group into the box, 'New Attribute Group'
2. Click Create

When you are finished creating items, click OK to exit.

Also:

- Working with Attributes
- Using Attribute Groups



Finding Items within your Database

The Find functions allows you to locate files with specific words and phrases within your database. In particular you can locate the text in:

- Description fields
- File names
- Folders names

To locate a particular file:

1. Enter the text you want to find

2. Select the field in which to locate it, e.g. the File Description or File name

3. Choose a Find Method

- **Fields CONTAINING find text**
This will return a match if the text you have entered is anywhere in the field.
E.g. if you are finding 'Asia' then this option will return 'Asian Movie Stars' as one of your matches.
- **Fields MATCH search text**
This will only return a match if the field has the same text as that which you have entered, e.g. finding 'Movie Stars' will return 'Movie Stars' as a hit, but not 'British Movie Stars'

4. Match Case?

If this is not checked then Find will ignore the case of the text, e.g. 'america' will be considered a match for 'America'

5. Click Find First

If a hit is found then it will be displayed in the image window. Hover your mouse over the image or filename in the status bar to see the full file description for the image.

6. Click Find Next

Clicking Find Next will display other matches for your search.

You can use Ctrl+F to display the Find dialog. Once you have closed it you can find further matches by pressing Ctrl+G.



Updating your database

Clicking on Database|Update or the Update button displays the update dialog.

Update performs three functions, while you can disable the first two of these, you are recommended to regularly perform them to keep your Smart Pix database and source directories aligned.

Note: if you are using Database Image storage then checking for deleted directories is not available because the files are automatically kept up to date.

1. Add references for new files

The first function is to go through your nominated source directories and **check for new files**. I.e. files you have copied to the directory but which are not presently referenced in the database. These are entered without attributes (in Edit mode you can highlight these new files by clicking 'Hide assigned files').

2. Remove references for files that no longer exist

The second function is to **check the directories for any files that have been deleted** or moved elsewhere. If any files cannot be located the references to them are removed from the database.

- **Ignore files in hard drive directories that cannot be located**

If you select this option then when Smart Pix cannot locate a hard drive directory the files from this directory will be ignored. If you do not have this option selected you will be prompted as to whether you want to delete this directory.

- **Ignore files in CD-ROM or network directories that are not available**

If you select this option then when Smart Pix cannot locate a CD-ROM or network directory the files from this directory will be ignored. If you do not have this option selected you will be prompted as to whether you want to delete this directory. It is advised that you leave this option selected as the most likely cause for the error will be that the CD-ROM is not in your drive, it is sitting on your CD rack.

3. Repack database files

The third function is always performed during an update and allows you to repack your database. The repack function clears deleted fields from your database tables, i.e. if you are using database image storage and you delete half of your image files, the blob.mb database file will remain the same size until you perform a repack.

Note: Not all databases can be accessed (most notably the fileextra.db) while the Smart Pix database is running, so occasionally Smart Pix will force a repack when starting up to do a more thorough repack. You can also force a thorough repack by using the startup parameter '/repack', i.e. select 'Run ..' from your Start Menu and type..

"C:\Program Files\Smart Pix Manager\smartpix.exe" /repack

Options:

- **Update Automatically**

The final check box allows you to have Smart Pix perform the **update automatically**, i.e. without prompting you before it deletes file and database references and adds new file references.

- **Create thumbnails for inserted files**

If this is selected then Smart Pix will create a thumbnail for each image that is inserted. While this option is the most convenient, if a lot of files will be inserted during the update it is more efficient to perform the update without this option and then use the thumbnail builder to create all the thumbnails.

You can also set up Windows to schedule an update while you are not using your computer.

Other Source Directory Information

Scheduling Updates with SAGE

If you want to set Smart Pix to update your database while you are not using it, e.g. in the middle of the night, you can use the System Agent (SAGE) that ships with some versions of Windows. In System Agent enter the full path of Smart Pix Manager followed by one of the following:

- **/updatenew** Smart Pix will add references for new files, while ignoring files that cannot be located
- **/updategone** Smart Pix will remove references for files that cannot be located, but will not search for new files
- **/updateall** Smart Pix will remove references for files that cannot be located and add references for new files

E.g. C:\program files\Smart Pix Manager\smartpix.exe /updatenew

Note: that Smart Pix will use the default settings and will not prompt you for confirmation, so it is advised that you only use the '/updatenew' option unless you back up regularly.

Advanced Functions

Using Multiple Databases

Smart Pix allows you to create and use multiple databases (registered version only), i.e. have separate sets of file lists and attributes for different image collections.

For example you may want to:

- Use Smart Pix for your personal as well as business images, so create a separate database for each
- Create separate databases for each of your image CD-ROMs.
- Use different image storage methods for different images. I.e. you might want extra security for private images so use database image storage and password access, but use normal storage for your general files

Note that the image collections can overlap between databases, you might in fact have them pointing to all the same images, but have a different set of attributes. The exception to this is if you are using image database storage. Because the image is stored within the database, that image is not available to other databases. Also if you are using 'False extension' storage then databases that share images will need to use the same false extension.

You can create and open databases just like a document in a word processor, with one important difference:

A Smart Pix database is not a single file, it is actually made up of 36 files. For this reason each database uses an entire directory. That is, you cannot have two Smart Pix databases in the same directory. When you open a database you don't locate any particular file, you simply point to the directory that contains these files.

Creating a new database

Click Database|Create New Database. You will be presented with the Create Database dialog.

All Smart Pix requires is that you give it a name and a directory in which to create it. It is advised that you create a whole new directory just for this database.

I.e. browse to your Smart Pix manager directory and click 'new dir' to create a new directory. Enter a name, for example; 'My Second Database'. Open the new directory and click OK, then OK to the confirmation. Viola, a new database is created.

Note: that as two Smart Pix databases cannot share the same directory, Smart Pix will warn you if you select a directory that already contains a database.

Opening databases

Smart Pix provides two ways to open a database:

- Select Database|Open Database and browse to the directory of the database you want to open (remember Smart Pix databases are not a single file they are a directory of files)
- Select Re-open Database and select one of the recently opened databases. Smart Pix remembers the last four opened databases.

Smart Pix also provides a facility for Moving, Copying and Deleting your Databases

Managing Your Databases

If you are using multiple databases you can use the database management utility for moving, copying and deleting your databases (**Registered Version only, to move databases in the unregistered version click here**).

Select Database|Manage Databases to display the database management dialog.

You will first need to select the database to manage:

Click on the top right browse button and select the directory of the database you want to move or delete. Note that you cannot move or delete the currently opened database, switch to a new database first. If you are not sure of the location of a database, open it and then select Database|Database Info.

Moving a Database:

1. Click on 'Move the database', then browse to the directory where you want to move it to. You cannot select a directory where a database already exists.
2. Click OK.

Copying a Database:

1. Click on 'Copy the database', then browse to the directory where you want to copy it to. You cannot select a directory where a database already exists.
2. Click OK.

After you have copied a database it is recommended that you rename either the original or the copy with a new database name, so that it can easily be opened using the Re-open menu item.

Deleting a Database

1. Click on 'Delete the database'.
2. Click OK.

If the database is using:

- **False extensions for image files:** Deleting the database will leave all image files referenced by it with the altered extension, so you will not be able to view them. Before deleting the database you should first open it and convert the storage method back to Normal, this will rename all files to their original extension.
- **Database Image Storage:** Deleting the database will also **delete all images** stored in the database! If you want to keep these images but still delete the database, you should first open it and convert the storage method back to Normal, this will save all files to their original locations.

Note: If you only have a single database and you want to wipe it and start afresh, you should not try and delete it and create a new one. Instead go to the Source Directories dialog and click 'Delete All'.

Also:

- Using Multiple Databases

Moving your Database Files in the Unregistered Version

By default Smart Pix stores its database files in its program directory, if necessary you can change this directory. Unfortunately doing this in the unregistered version is a little arduous.

The procedure is:

1. Move the Database files

Close Smart Pix. Move all of the following files to your new directory:

Files.* (i.e. all files with the name 'files' regardless of extension, e.g. files.db, files.val ...)
Path.*
Temp.*
Links.*
Longattr.*
Blob.*
storage.*
Fileextra.*
ver.*
attrextra.*
filedesc.*
*.chk

2. Run Smart Pix

When you run Smart Pix you will be advised that your database cannot be located and asked to browse to the directory where you have moved it. From now on Smart Pix will always look in this directory for your database files.

If you encounter any problems, run the Registry Editor (if you don't know how to run the registry editor you are already out of your depth) and examine the key at the location, HKEY_LOCAL_MACHINE\Software\Xequote\Smart Pix\dbpath. If all else fails delete this registry key and move your database files back to the program directory.

[Other Source Directory Information](#)

Storage Method Conversion

Smart Pix Manager supports three storage methods:

- **Normal:**
Your image files are not altered in anyway
- **False Extension:**
The extension is changed for your image files so that they do not appear to be images and thus cannot easily be opened in other applications
- **Database Storage:**
The images are stored within the encrypted Smart Pix database so that they **cannot** be opened in any other application other than Smart Pix (usually this is used in combination with a start-up password)

The conversion routine is error correcting, i.e. if you converted half of your images to a new storage method and you are hit by a power cut, you can restart Smart Pix and continue conversion or convert back to your old method.

Note: that because 'Disk Browse' mode represents what you would find if you browsed your hard drive normally, e.g. with Explorer, you will no longer be able to view your referenced images in Disk Browse mode if you stop using Normal storage. Database stored images will no longer be in their former directories because they have been moved into the database. False extension files will be invisible to all viewers (and Smart Pix in disk browse mode) because their extension indicates that they are not images.

Information about Image Storage Conversion

There are four combinations of image storage conversion:

NORMAL MODE TO FALSE EXTENSION

Process:

- For each file referenced in your database Smart Pix will change its real extension to the one you have selected (e.g. .spm, or .dll)

Points of Caution:

- *Windows Directory* - Ensure that the Windows directory is not one of your source directories or you will lose your wallpaper.
- *Renaming files* - If Smart Pix locates 2 files in the same directory that would clash when their extension is changed, i.e. image.bmp and image.jpg, then the subsequent images are renamed, i.e. it would become image.spm and image2.spm.

FALSE EXTENSION TO NORMAL MODE

Process:

- Smart Pix will go through all the files referenced in your database and rename them to their original extension

Points of Caution:

- None

NORMAL MODE TO DATABASE STORAGE

Process:

- Smart Pix will save each image referenced in your database to a database blob field and then renames the original to a temporary name (e.g. xyz.jpg becomes xyz.~jp).

You can delete these temporary files in Explorer after conversion.

Points of Caution:

- *Windows Directory* - Ensure that the Windows directory is not one of your source directories or you will lose your wallpaper.
- *Disk Space* - Before you attempt conversion to database storage open each of your source directories in Explorer and add up the total amount of space that your image collection requires.

During Conversion Smart Pix will require **twice** this amount!

- All the images stored in the database
- The original files, renamed to a temporary name (xyz.~jp for example)

Also note that the images will be saved to the Blob database in your datapath directory.

For Example, lets say you have 200 MB of images in your source directories, 100MB on C Drive and 100MB on D drive. Your datapath (where your database is stored) is the default <program path>, i.e. generally c:\program files\smart pix manager. So you will need to have at least 200MB free on C Drive before you attempt the conversion

Maximum Database Size - The total size of the images stored within your database cannot exceed 2 Gigabytes (approximately twenty thousand 100k images)

Options:

- Delete files after database insertion: If you have already backed up your image collection you can select this option and Smart Pix will delete your source files instead of renaming them. This is advised if you have limited hard disk space.

DATABASE STORAGE TO NORMAL STORAGE

Process:

- Smart Pix will save each image stored in your database to its original location and filename. After removing the images the Image Storage Database will be repacked to remove the deleted images.

Points of Caution:

- *Disk Space* - Before you attempt conversion ensure you have adequate disk space to save your original files.

During Conversion Smart Pix will require twice the size of you blob.mb file!

- All the images stored in the database (blob.mb)
- Your image files saved to their original locations

If you have source directories on multiple drives and are unsure where your images will be saved, then relocate all your source directories to the same drive!

- *Source Directories:* Go through your list of source directories and ensure they still exist, if they do not create them or 'relocate' them. If Smart Pix cannot locate a source directory the images will be saved to your datapath and the reference to the file in the database will be incorrect.

Options:

- Repack database after every x files: If you are short of disk space you can select this option to reduce the amount of space used during conversion, e.g. if your average image is 50k and you select repack after every 200 images then Smart Pix will only require about 10-20 MB of slack during conversion rather than twice your image collection as is normal.

If you should encounter any **problems during conversion**, e.g. running out of disk space or a power outage, then you can continue conversion easily.

Image Storage Conversion Settings

Repack Database after every x files.

When converting from Blob to Normal Storage the Blob Table will remain at its original size until a final repack when conversion is complete. I.e. just before this final repack your image collection will have reached a point of taking up twice its storage size:

- your entire image collection in the database, and
- your entire collection in files.

If you are short on space you can have Smart Pix perform it's repack after converting every x files. If you choose a low value such as 200 files the conversion will only need approximately 10-20 MB surplus space (assuming your images are about 50k in size each).

Delete images after database insertion

When converting from Normal to Database Storage, Smart Pix does not delete your image files after inserting them into the database, by default it renames them from image.xyz to image~xy, and leaves the deletion of these files up to you (after you have backed them up of course). The consequence of this is that after conversion your image collection will be twice its original size:

- your image collection stored in the database, and
- these temporary files waiting to be deleted.

If you have already backed up these images you may be happy to have Smart Pix delete them after successful insertion. In this way Smart Pix will require very little surplus disk space during conversion

Pause on Error Detection

By default Smart Pix posts any error messages to the error panel and continues conversion. If you select this option Smart Pix will present a message dialog when an error is encountered.

Non-standard Storage Method Conversion

If you experienced a problem whilst converting your images to a new storage method, eg you ran out of disk space or were hit by a power cut, then you have two options:

- Continue converting to the new storage method
- Revert to your previous method

Restarting Conversion

Before restarting conversion, ensure you understand why your initial problem occurred and that you have rectified it. I.e. if you were converting to blob storage and you ran out of disk space, ensure you have created enough space before you continue (Or change the conversion settings to minimise space used during conversion)

In Options, Database Settings click the Image storage method that you want to convert to, even if it is already selected. Click the Convert Button.

You will be presented with the Storage Method Checklist dialog. Ensure the method of conversion is correct. If not click 'Change' and you will be presented with the Change Storage Method dialog (You will also have been presented with this dialog if your storage conversion method was erroneous).

Change Storage Method dialog

In the top box, select the method you want to convert from.

- If you are continuing to convert to a new storage method, this will be your previous storage method.
- If you are reverting to your previous storage method, this will be the storage method you were in the process of converting to.

In the next box select the method you want to convert to.

- If you are continuing to convert to a new storage method, enter that method here.
- If you are reverting to your previous storage method enter that here.

Click OK

Check the storage method is correct. Do NOT perform a database update.

Click OK

If you are converting to or from Database storage and are short of disk space you might want to tweak the conversion settings.

Click Start.

You will see a lot of warnings when you first start (or at the end if you are reverting to your original storage method) as Smart Pix locates the images that have been converted, but once the conversion completes all your images will have the selected storage method.

Back up and restoration of your database files

If you are using Smart Pix to its full potential and have catalogued all your images files, then there is now significant value held in the Smart Pix database files. To lose these files either by accidental deletion, hard drive failure or file corruption would be too painful to think about. Consequently it is important that you regularly back up your files.

The data files of importance are:

Database files:

Files.* (i.e. all files with the name 'files' regardless of extension, e.g. files.db, files.val ...)
Path.*
Temp.*
Links.*
Longattr.*
Blob.*
Storage.*
Fileextra.*
ver.*
attrxtra.*
filedesc.*
*.chk

Bookmark files:

*.bmk

Other Files:

dirs.lst
favdir.txt
recent.lst
giftiming.ini

On a regular basis, weekly or monthly depending how often you use Smart Pix, you will want to copy these files to a floppy diskette or separate hard drive, or incorporate them into your regular backup plan (you do backup, don't you?). You can use the Manage database dialog to copy your database to another drive for back up.

Backing up to a Text File

If you are short on disk space you may prefer to export your database to a text file and back this up instead. A text export of your database will not back up:

- Attribute Groups
- Images Stored within your database
- Bookmark files
- Your Favorite directories list

If you should lose your original files or encounter an error loading them:

1. Close Smart Pix.
2. Move all the above files from the directory of the database you are currently using to a temp directory.
3. Copy your back up files into the directory.

4. Re-run Smart Pix.

If you are still having problems then one of your program files may be missing or the program registry may be corrupted:

1. Select 'Run...' under the Start Menu'
2. Type 'Regedit'
3. Browse to HKEY_LOCAL_MACHINE\Software\Xepute\Smart Pix
4. In the LEFT pane select the 'Smart Pix' folder
5. Press the Delete key
6. Ensure all the above files are located in the same directory as the Smart Pix program
7. Re-run Smart Pix

Other Source Directory Information

Importing and Exporting Database Entries

Importing Database entries

Smart Pix support inputting of database entries from comma-separated text files.

Importing is generally used for three functions:

1. Importing data into Smart Pix from other applications
2. Restoring backed-up database information
3. Batch addition of attributes and descriptions to files.

Files should be in the format:

File name and path, Description: Description of file, Attribute 1, Attribute 2

- **File name and path:** Location of file to be input (max 150 chars)
- **Description:** A text description of the file, must be preceded by the word; 'Description:', max 255 chars, optional
- **Attributes:** Attributes to be added to the file, separated by commas

For example:

C:\my pics\cars\porsche.gif, Description: A red porsche, red, porsche, nice car

D:\anotherpic.jpg

C:\my pics\Japan\Osaka Skyline.jpg, Japanese pics, scenes, cities

C:\my pics\more\PamelaA.png, Description: Beautiful Baywatch Babe

Browse to the CSV that you wish to import and click OK. You do not need to do any preparation as Smart Pix will create Source Directories, File references, Attributes and descriptions as required.

Batch Assigning of Attributes and Descriptions:

If Smart Pix locates a file being imported in its database it will assign any listed attributes or description to that file. In this way you can use this function to Batch assign or remove attributes and descriptions to your files. Simply export your database to a text file and open it in a spreadsheet, such as Excel, add any attributes or description to the items and import it back into your database. All the new attributes and descriptions will be added.

Note, however, that this process only adds attributes or descriptions, **NO attributes or descriptions are removed!** If you want the attributes and descriptions of files to match exactly those of the import file then you need to import them into an empty database or remove all existing attributes and descriptions on your files before importing (back up your database first!).

Options:

- **Do not create for files that cannot be located**

If this is checked then Smart Pix will ensure that the file exists before attempting to import it. If it cannot be located then the entry is skipped.

- **Create thumbnails for imported files**

If this is checked then the thumbnails will be created for files as they are being imported.

Exporting Database Entries

Smart Pix allows you to export all entries within your database for using in other applications or for archival purposes.

Smart Pix exports an entry for each file in your database and includes all assigned attributes and descriptions.

The file can be imported back into Smart Pix at any time.

Please note that the exported file does not include:

- Attribute Groups
- Thumbnails
- Images: If you are using Database image storage the export procedure will NOT export the images stored within your database

The above information will be lost if you export a database and then later import it into an empty database

Exporting to a text files is a quick and cheap (in terms of disk space) method of backing up your Smart Pix database.

Note: If you wish to create file lists for specific sets of images or with more information such as image size and colour depth, you should use the Create Lists feature instead.

Character used to delimit fields

This is the character that Smart Pix will use to separate fields when importing and exporting entries.

- **When Importing:**

You need to set this to the character that is used to separate items within each record in the file you are importing, generally this is a comma, or a hash (#) if it was created by Smart Pix. If you are not sure what the character used is then open the file with Notepad and check what characters separates each item. For example in the following record the delimiting character is a percentage symbol (%)

C:\An Image.jpg%Description: My Favorite car%Car%Blue%Porsche 959

- **When Exporting:**

You should set this to a symbol that you know is not used in any of your fields, e.g. it is not recommended you set this to a comma, as you may use commas in your file description. The default is a hash (#) symbol which is a safe option as you are unlikely to have this symbol in your database.

Multiple Selection

The effect of your selection depends on whether you have the Ctrl or Shift key depressed:

- **Neither Ctrl nor Shift depressed while mouse click**

Every time you click an item without Ctrl or Shift your multiple selections are cleared and only the current file is highlighted.

- **Ctrl Key depressed while mouse click**

Every time you click a new image it will be highlighted and added to your multiple selection.

- **Shift Key depressed while mouse click**

If you click a file and then while holding down the shift key click a second file in the panel it will select both files and all files in-between.

File Management

Overview

Smart Pix has the following file management capabilities:

- Save or Convert file: press the Save as button to save the file, convert it to another image format or set it as the Windows wallpaper.
- Rename: press the rename button to rename the selected file(s).
- Move/Copy: press the move/copy button to move or copy the selected file(s) to another location.
- Delete: press the delete button or key to permanently delete the selected file(s) or reference(s) in the database.
- Edit: press the Edit button to launch the selected file(s) in an external editor

As well as Directory Management Functions.

Smart Pix is completely integrated with Windows Explorer so you can move and copy files or directories by dragging and dropping them between windows.



Saving and Converting your Images

The Save Dialog allows you to perform a number of functions

- Save the current image with any changes you have made (such as rotation or resizing)
- Save the current image to a new file name
- Convert the image to a new image format
- Set the image as Windows wallpaper

Saving the current image with changes

If you have altered the current image and it is of a supported save format (Smart Pix can display but not save to the following formats: GIF, PCX, WMF, EMF and ICO) then Smart Pix will allow you to save it to its current name. Your database reference will be preserved and thumbnail updated.

Saving to a new file name or image format

Smart Pix will allow you to save the image to a new name or format. Smart Pix supports most common image formats, however the two recommended formats are:

- **JPEG format** for images you want to view but not edit.
- **BMP format** for images you want to edit.

Options:

- **Delete original file after Save/Conversion**

When saving to a new file name or image format you may want the old file deleted after the new file is created. If so, check this box.

- **Transfer Database reference to new file**

If you are in the database modes (View or Edit mode) you are also able to transfer your database reference to the new file (maintaining any attributes or description). This is recommended if you have chosen to delete the original.

Setting the image as Windows wallpaper

If you select this option then Smart Pix will replace your current Windows wallpaper with the displayed image. You can alter the filename that Smart Pix assigns to the file, but you must leave it in BMP format so that Windows can use it as wallpaper.

Options:

- **Tiled**

If you select 'Tiled' then if the image is smaller than the Desktop it will be replicated horizontally and vertically to fill the window.

- **Centered**

If you select 'Centered' then only a single image will appear in the centre of the desktop.

Note: Do not use this function if you are using an IE4's Active Desktop.

Note: Smart Pix is not designed as a batch conversion program, if you have multiple files selected it will only save/convert the image that is currently displayed

Other File Management Functions

JPEG format is recommended for any files that you intend to view but not edit, because they have the most effective compression algorithm, i.e. you get the smallest file sizes. If you have an image collection stored in BMP or PCX format then it is highly recommended that you convert all files to JPG (you are likely to find space savings of up to 90%). However it is important to realise that in compressing files to JPG some picture degradation occurs.

Whenever you save a JPEG you are asked for a compression setting. 100% means little compression, i.e. big file, high quality. 1% means maximum compression, i.e. small file, low quality. We recommend using 75%, at this level you receive little noticeable image degradation, but a significant amount of compression will be obtained so the file size will be very small.

BMP format, support for BMP format is included to allow you to edit image files. While many image editors will accept a wide variety of formats, some, such as the Paint program that comes with Windows, will not. However if you convert a file to BMP you know that it will be compatible with any Imaging product for Windows. Converting to BMP format is also good if you wish to give a file to somebody but are not sure if they have an image viewer. No Windows PC has a problem displaying a picture in BMP format.



Renaming files

Files can be renamed by pressing the rename button or File|Rename or pressing 'R'. If you rename a file in Edit or View mode it will also change the corresponding reference in the database.

Note if you have multiple files selected then Smart Pix will prompt you to rename each file in turn. You can discontinue this process by pressing Cancel.

Batch Renaming Functionality:

Smart Pix allows you to batch rename files to a file stem plus an incremented number plus an extension by checking the option in the Rename Dialog

For example, if you select the following four files and click Rename..

- An image.jpg
- Another image.jpg
- Mygirlfriend.gif
- LastPix.WMF

Then enter the text as 'MyImage', leave the extension as it is and select the check box then the images will be renamed to:

- MyImage.jpg
- MyImage2.jpg
- MyImage3.gif
- MyImage4.WMF

Other File Management Functions



How to Move and Copy Files

Pressing the Move/Copy button or File|Move/Copy will bring up a dialog box allowing you to move or copy the selected file(s) to a new directory.

You can either type in a destination directory, press browse to locate a destination directory, or click on one of the directories displayed in the history list.

After you have selected a directory choose either move or copy.

Note: If you click on the Move/Copy button or File|Move/Copy then whether it defaults to 'move' or to 'copy' will depend on which option you last used. However the Move key ('x') and the Copy key ('c') forces the dialog to default to move or copy, respectively.

Database File Reference

If you are in View or Edit mode you can also specify **what Smart Pix should do with the file reference in the database.**

- The first option allows you to transfer the file reference (and all its attributes) to the new file.
- The second options depends whether you are moving or copying files, allowing you to either delete the reference or leave the reference with the original file, respectively.

Displaying of Recent Directories or Favourites

In the area below the destination directory you are presented with a list of directories to expedite directory selection. You can choose whether Smart Pix should display the directories you have most recently moved/copied files to or your list of favourite directories (from Disk Browse mode).

Creating new directories:

You can create new directories while moving or copying a file by either:

- Typing in a new directory in destination box. When you go to move the file Smart Pix will confirm that you want to create this new directory.
- Clicking the 'New Dir' button in the browse dialog. It will create a new sub-directory in the currently selected directory.

Function of move and copy with False Extension storage:

The setting used for transferral of the database reference will determine how a file is treated when moving or copying in Changed Extension mode. If you select transfer reference to a new file then the destination file will have your special extension. If you did not select this option then the destination file will have its original extension. I.e. the file that remains referenced by the database will have your special extension, any file involved in a move or copy function not referenced by the database will have its original extension.

Function of move and copy with image Database Storage:

If you copy a file in database storage mode the file is created and saved as a normal file in your destination directory. If you select Move, it will create the file in the destination directory and delete the image stored in the database.

Quick Move and Copy (Registered version only):

You can move or copy files with just a few clicks by right clicking your selected files and clicking 'Move to..' or 'Copy to..' and selecting one of your favourite or recent destination directories.

Note: You can also move and copy files by dragging and dropping them between Smart Pix and Windows Explorer

Other File Management Functions



Deleting Files

The method for deleting files depends on which mode you are in:

- **Disk Browse and Bookmark modes:**

Pressing the delete button or delete key will remove the currently selected file(s) from your hard drive. You will be prompted to confirm the action.

- **View and Edit modes:**

Pressing the delete button or delete key will bring up the delete dialog. This allows you to confirm the deletion and specify whether you also want to remove the original file from your hard drive.

Note that if you only delete the reference and not the original file, then the reference will be added back to the database when you perform an update. If you do not wish an image to be contained in your database but want to keep the file you should move it to a directory which has not been nominated as a source directory.

File Deletion Options

You can turn off Confirmation of Delete under Options. You can also select whether Smart Pix should move files to the Recycle Bin upon deletion.

Other File Management Functions

Directory Management Functions

In Disk Browse mode you can perform standard functions on your directories by selecting them and clicking the right mouse button.

- **Create Sub-directory**

This allows you to create a new sub-directory in the selected folder

- **Rename Directory**

This allows you to rename the currently selected directory. If the directory is a source directory then then your database will automatically be updated.

- **Move/Copy Directory**

This allows you move or copy the directory to a new location. If the directory is a source directory then then your database will automatically be updated.

- **Delete Directory**

This will delete the currently selected directory. If the directory is a source directory then then you will be asked if you want to remove references to this directory from your database.

- **Add Current Directory to Favorites Lists**

This will add the currently selected directory to your 'favourites'.

- **Add Current Directory to the Database**

This will bring up the 'Add new source directory' dialog, with the currently selected directory entered.

File Function

Using the Favourite Directories Function

Smart Pix stores a list of your favourite directories and allows you to switch to these directories in Browse Mode simply by clicking 'Go to..' and then a destination directory.

This list of directories is also used for quickly moving or copying a file by right-clicking a file and selecting copy to/move to and then one of your destination directories. It is also displayed in the move/copy dialog box to allow you to quickly select a favourite directory.

You can add new directories to the list by selecting them and clicking on 'add dir'.

The list can be altered by clicking on one of the following options from the bottom of the favourites list:

Update:

This will remove references to any directories that no longer exist

Edit:

This will allow you to edit the list of favourites by launching it into Notepad. You can delete a directory by removing its line from the list, ensure you do NOT leave a blank line. You can also add directories manually if you wish.

When you have finished editing, close the document and then return to Smart Pix and click OK to the 'Reload List?' dialog.

Clear All:

This will delete all items in your favourites list.

Editing Images

Manipulating your Images

Smart Pix allows you to perform a number of image manipulation functions

- [Rotate or Flip the Image](#)
- [Resize the Image](#)
- Manipulate the colours of the image with [Filters and Effects](#)

If you alter your image Smart Pix will prompt you to save it before loading a new image. If you are in View or Edit mode then the database reference will be retained and the thumbnail updated automatically.

Also:

- [Saving your image](#)
- [Launching images in an external editor](#)

Rotating and Flipping Images

Selecting Edit|Effects|Rotate or Flip Image will display the Transform dialog.

You have three options:

- **Rotate the Image:**

Select the number of degrees by which the image should be rotated clockwise (any number between 1 and 359), for example if you select 90 degrees the Top of the image will become the Right of the image.

- **Flip the image horizontally:**

This will create a mirror copy of the original, i.e. the left of the image will be moved to the right and visa versa.

- **Flip the image vertically:**

This will reverse the image vertically, i.e. the top of the image will be moved to the bottom and visa versa.

Manipulating your images

Resizing Images

The resize function will alter the size of your image. Unlike zooming, which only changes the displayed size of the image, Resize will permanently alter the height and width of the image.

You can set a new image size by altering either:

- The size in pixels of the destination image
- The percentage increase over the original.

If you do not wish to maintain the aspect ratio of the image you can deselect the 'Maintain aspect ratio' option and set the new height and width of image individually.

Manipulating your images

Filters and Effects

Smart Pix offers the following Filters and Effects:

- **BCG Filter**

This filter allows you to change the following qualities of the image:

- Brightness
- Contrast
- Gamma Correction

Gamma correction allows you to correct the colours of an image to get a better rendering on a monitor. Changing the value alters the contrast in the dark areas of the image.

- **HSV Filter**

HSV refers to the items Hue, Saturation and (Brightness) Value, allowing you to alter the image colour with values that are more natural to the human eye.

Hue allows you to set the dominant colour of the image (where the colours are represented as degrees)

Saturation is the percentage of the specified hue in the colour

Brightness value is the percentage of white in the colour

- **RGB Filter**

The acronym RGB stands for the Red, Green and Blue. These are primary colours, that is, all other colours can be represented by the amount of red, green or blue that they contain. This filter allows you to tweak the strength of these colours within your image.

- **Grey Scale Filter**

Converts the image from full-colour to multiple shades of grey.

- **Sharpen Image Effect**

This function will create an image with more contrast than its original image.

- **Smooth Image Effect**

This function will create an image with less contrast than its original image.

- **Contour Image Effect**

Manipulating your images



Launching images in an external editor

Pressing "E" will launch the selected files in an external viewer or Imaging program. Smart Pix will prompt you whether to continue launching files after the first five images, just in case you press Launch by mistake with your entire database highlighted.

If you have not specified a preferred program in the options dialog then Smart Pix will display a warning advising you to do so.

If you want to open an image in a program other than the one that you have set as preferred, hold down Ctrl as you click the Edit button. Smart Pix will allow you to browse for an application to use just for that file.

Manipulating your images

Thumbnail Functionality



Displaying Thumbnails

Smart Pix provides thumbnail support in all modes, however the method of displaying thumbnails differs between the database modes (View and Edit modes) and the non-database/mixed modes (Disk Browse and Bookmarks mode respectively)

- **Thumbnails in View and Edit modes**

Thumbnails in these modes are stored within the database, they cannot be displayed until you have created them using the thumbnail builder.

- **Thumbnails in Disk Browse and Bookmarks modes**

In these modes the thumbnails are created dynamically, that is, when you browse a directory it automatically creates the thumbnails as you need to view them. The thumbnails are not saved to diskette unless you have selected this setting in Options.

Why does Smart Pix use two different methods for Thumbnail Display?

The Smart Pix database is encrypted and users may enable password protection to secure their files, therefore any stored thumbnails for these files need to also be stored within the encrypted database because storing them on the hard drive would compromise security, i.e. you can appreciate how foolish it would be to store your images within the encrypted database yet have the thumbnails accessible on your hard drive.

Disk Browse mode only displays files in a particular directory, Bookmarks mode only displays files from a list of locations on your hard drive (except when bookmarks refer to BLOB files) so Smart Pix has no way of knowing whether the file exists in your database and searching for it would take longer than creating the thumbnail dynamically. Therefore thumbnails in this mode are created dynamically or (optionally) saved to the hard drive.

Enabling Thumbnails in View and Edit modes

Thumbnails can be created in three ways:

1. Using the Thumbnail Builder to scan your database for any files without thumbnails
2. Automatically creating thumbnails when inserting new files into your database
3. Automatically creating thumbnails when performing a database update.

Of these 1 is preferred because the action of stopping to create a thumbnail when inserting new files in 2 and 3 above makes it slower than adding all the new files then adding all the new thumbnails in two separate steps. However using method 2 or 3 is more convenient which may outweigh the detriment to speed.

Enabling Thumbnails in Disk Browse and Bookmarks modes

Smart Pix creates the thumbnails in these modes as they are displayed on screen. By default these are only created in memory and are not saved to disk. On a fast computer this is the best method.

However if the process of creating thumbnails in these modes is too slow, you can select the option to permanently save thumbnails to hard drive.

This option will cost you some hard drive space (approximately 6-8k per file). Every time a

thumbnail is displayed Smart Pix checks for a corresponding '.thb' file (e.g. for the file myimage.jpg the thumbnail file would be myimage.thb) and uses it for display. If one cannot be found, Smart Pix creates the thumbnail dynamically and then saves it to disk. In this way they next time you return to those files the thumbnails will be displayed very quickly.

You can configure this settings so that thumbnails are only saved if they are over a certain size.

Also:

- [Thumbnail builder.](#)
- [ThumbViewer](#)
- [Exporting Thumbnails to image sheets or HTML indexes](#)
- [Printing Thumbnails](#)



ThumbViewer

Clicking the ThumbViewer button or pressing 'T' will bring up the ThumbViewer. This dialog displays all the thumbnails in the current mode in a more dense format than shown in the file list. This is useful if you want to locate a file quickly.

Clicking any file in the ThumbViewer will display it in the main window.

Note that you can keep the ThumbViewer open at all times and it will reflect your current mode, e.g. if you change to a different mode then when you return to the ThumbViewer it will display the thumbnails from the new mode.

ThumbViewer Buttons:



Create Thumb Sheets and File Lists: Allows you to export the files in the current mode to File Description text files, Thumb image sheets, or HTML thumbnail indexes



Print: Prints thumbnails for images in the current mode.



Align Windows: Align the ThumbViewer window and the main window side-by-side



Change Thumbnail Number: Alters the number of thumbnails displayed on each 'page' of the ThumbViewer.



Previous: Displays the previous page of thumbnails



Next: Displays the next page of thumbnails

Also:

- [Thumbnail Display Overview](#)
- [Thumbnail builder](#).
- [Exporting Thumbnails to image sheets or HTML indexes](#)
- [Printing Thumbnails](#)



Creating Thumbnail and File Lists

Smart Pix allows you to export information on files or thumbnails within your collection. In all modes Smart Pix can create:

- **File Description lists:** Text files listing all the files with their image information, attributes and descriptions
- **HTML Thumbnail Indexes:** JPEG thumbnails and HTML indexes that allow you to browse your images with a web browser or publish them to the internet
- **Thumb sheets:** Images that contain multiple thumbnails of your files

You can access these functions by selected Thumbnails|Thumb Sheets and File Lists

File Description lists

Select 'Export information for all files in current mode to a text file'

This option creates a text file listing all the files that are in the current mode. For each item the following image information is listed: image dimensions, colour depth and file size.

Options:

If you are exporting database entries (i.e. in View or Edit modes) then you can also set the following options:

- **Include attributes**

If this is checked then Smart Pix will also list all the attributes assigned to each file

- **Include description**

If this is checked then Smart Pix will include the file description for that image if you have assigned one.

Note: files created with this procedure can also be imported back into Smart Pix using the Import and Export database feature.

HTML Thumbnail Indexes (Registered version only)

Select 'Create HTML thumbnail index to all files in the current mode'.

This option will create JPEG thumbnails and multiple HTML files for all images in the current mode. Each HTML page will display a certain number of thumbnails. Clicking any thumbnail will display the image. 'Previous' and 'Next' links allow you to switch between pages within the index.

Note that when you choose a file name Smart Pix will use the name stem to create more HTML files if they are required. For example if you specify the file name as myindex.htm and three HTML files are needed they will be called myindex1.htm, myindex2.htm, myindex3.htm. Choose your filename carefully any destination files of the same name will be overwritten without warning.

Options:

- **Number of thumbnails per page:**

Thumbnails are displayed in columns of five. You can specify how many rows of thumbnails are shown in each HTML page by specifying a value here. If multiple pages are required then each HTML page allows you to select the next or previous index file.

- **Maximum thumbnail Size**

These settings allow you to specify the maximum dimensions of the thumbnails. As the image aspect ratio is maintained, images will generally be narrower or shorter than the value you set here.

- **Save Thumbnails to same directory as HTML files**

If this option is set then the created thumbnails will be saved to the same directory as you chose for the HTML files. Otherwise each thumbnail is saved to the same directory as the image the thumbnail is of.

- **Use relative links to files if stored in the same directory as HTML files**

If this option is set then where possible Smart Pix will create a relative hyperlink (e.g. the link points to the image myimage.jpg in the same directory) rather than a fixed hyperlink (e.g. the link points to C:\My Pictures\some pics\myimage.jpg). Generally relative links are preferable because they continue to work even if the HTML file is moved or published to the internet (as long as the necessary files are copied with it).

Using Smart Pix to create thumbnails for your web page

Smart Pix HTML indexes are perfect for creating an online album of your pictures because browsers can quickly see the images you have available without needing to load each one. If they find a picture they like they can click the thumbnail to see it displayed full size.

This is the process for creating an online album:

1. **Copy all the images you want to use to a temporary directory**

All the images used by this index will need to be copied to the same directory. If you have different sets of images you might want to create separate HTML indexes for each.

2. **Convert all images to JPEG or GIF**

Web browsers generally only support JPEG (or .jpg) and GIF formats so if you have images of other formats you will need to convert them.

3. **Open the 'Thumb Sheets and File Lists' dialog and select the options for Creating HTML indexes.**

You **MUST** select the option 'Use relative links to files if stored in the same directory as HTML files'

4. **Copy all the files in the directory to your web site**

You may want to edit the HTML files to create links back to your home page, but everything else is ready.

Create Thumb Image Sheets

Select 'Export thumbnails for all files in the current mode to images'

This option creates multiple images of thumbnails of the files in the current mode. The number of thumbnails per image and their size is determined by the following settings:

- **Number of thumbnails**

These settings will determine how many thumbnails are placed across (horizontally along the image) and down (placed vertically down the image) the page. The higher the setting the more thumbnails will be displayed but the smaller they will appear.

The product of number across by number down determines how many thumbnails will appear on each image sheet.

Note that If you have more images in the current mode than the sum of Number across and Number down then Smart Pix will create multiple images. The filename will be incremented for each new file. Any file of the same name will be OVERWRITTEN!

For example, if you are in Disk Browse mode and there are 30 images in the currently displayed directory, and you have set to display 4 thumbnails across and 3 down then you will need three images. If the file name you chose to save as was picidx.jpg, then your three filenames will be picidx.jpg, picidx2.jpg and picidx3.jpg. If a file already exists of the same name in the selected directory it will be overwritten!

- **Resolution of the image**

This determines the size of the image (in pixels) that will contain your thumbnails. A good choice is to set this to the size of your screen. (most screens are 800 or 1024 pixels wide and 600 or 768 pixels high)

Also:

- [Thumbnail Overview](#)
- [Thumbnail builder.](#)
- [ThumbViewer](#)
- [Printing Thumbnails](#)



Thumbnail Builder

The Thumbnail Builder allows you to create thumbnails for your database images. Thumbnails are stored in an encrypted format within the database, each thumbnail is approximately 7k in size (unless you have set the High Quality thumbnail option). When you create thumbnails Smart Pix also stores details about the image file such as its dimension and file size.

Select Database|Build Thumbnails to display the Thumbnail Builder.

You can perform three actions:

- **Create thumbnails for all files stored within your database**

This setting instructs Smart Pix to check all database files and create thumbnails if they do not already exist.

- **Build thumbnails only for database files in these directories**

This will allow you to select which directories that Smart Pix should create thumbnails for. It will only check files that are referenced by these directories and create thumbnails where they are needed.

- **Delete all thumbnails**

If you are short on disk space you may want to delete all your thumbnails, this may reduce the size of your database by as much as 80%, however you will not be able to view thumbnails in View and Edit modes

Thumb Quality

By default Smart Pix uses 256 colour thumbnails, which equates to about 7k per thumbnail. If you would prefer higher quality thumbnails then select this item. High quality thumbnails will use the same colour depth as the original file. Each thumbnail is approximately 17k in size. You can use a combination of high quality and standard thumbnails.

Note that Smart Pix remembers your setting and uses the same setting if you create thumbnails when doing an Update or Source Directory insertion, and also if creating permanent thumbnails in Disk Browse and Bookmarks mode as well.

Overwrite existing thumbnails

By default Smart Pix only creates thumbnails if the file reference needs one. There are times when you may want to delete the existing thumbnails and create new ones

- When you are converting your thumbnails to a different quality (see above)
- When you have altered a file, but not changed its name, i.e. the thumbnail stored in the database is of the old image of that name.

When you are satisfied with your settings press OK to commence thumbnail creation.

Also:

- [Thumbnail Display Overview](#)
- [ThumbViewer](#)
- [Exporting Thumbnails to image sheets or HTML indexes](#)

- Printing Thumbnails

Setting Options



Viewing Options

JPEG Options

- **Load image in background**

This option allows you to choose whether an image is displayed progressively (as it is loading) or loaded in the background and then displayed. If you choose to load in background then when you select a new file, the existing image remains visible until the new image has been completely loaded. You can determine load progress by checking the progress bar at the bottom left of the status bar. This is particularly recommended in slideshow mode.

- **Function of Fast Button**

If the Fast button on the toolbar is depressed then Smart Pix will expedite the loading of JPEG files by loading only a portion of their image information (i.e. displaying half or quarter size). Naturally this functionality will reduce the quality of the image and it is generally only used when browsing images.

The options allow you to specify what effect the fast button has.

1. Intelligent reduction - Better Quality

In this mode Smart Pix will reduce the image size to improve loading speed based on the size of the image window, if doing so will not compromise the quality of an image that would have been displayed in an image window of that size.

2. Intelligent reduction - Better Speed

In this mode Smart Pix will reduce the size of the image until it fits into the image window. Consequently the smaller the size of the image window the faster images will load.

3. Fast displays images half size

With Fast, images will always be shown at half their original size, this will also halve loading time.

4. Fast displays images quarter size

With Fast, images will always be shown at quarter their original size, this will also quarter their loading time.

- **Never prompt for JPEG compression setting when saving**

By default whenever saving a JPEG file you are prompted to choose a compression setting, if you would prefer you can set a value here that will be used for future saves.

Animated GIF Options

- **Default Animation Delay**

If you find the GIF animation is too fast or slow for your system you can alter the default delay

between frame display here. Note: You can alter the animation delay for individual files with the ',' and '.' (i.e. these transcribe to the < and > keys) during display.

- **Store preferred GIF delay for each file**

When this option is set then if you alter the animation delay for a GIF (using the ',' and '.' keys) then Smart Pix will remember the setting of that particular image and use it next time it is displayed.

Other:

- **Selecting new image cancels loading of current image**

If you select the 'Selecting new image cancels loading of current image' option then you can cancel a BMP or JPEG load by clicking on a new image (as an alternative to the cancel key or cancel button). If this is not selected then during image load selecting a new image has no effect.

- **Resize new image windows to fit image**

If this is checked then when you launch an image into a new image window the window will be resized so that the image is displayed without scrolling. If the image is larger than the screen size it will be reduced in size so that it fits.

Also:

- Program Options
- Other Options
- Database Settings



Program Options

Disk Browse mode start up directory

This option allows you to choose whether Smart Pix should remember the last directory (ie the directory you were in when you closed Smart Pix the last time you ran it), or default to a specified one. If you specify last directory then upon starting Smart Pix and entering the Browse mode the directory will change to the previous directory. If you click 'default to..' then you need to enter a default directory for Smart Pix. Now every time you run Smart Pix and go into Browse mode it will start in this directory.

Editor

This option allows you to specify an external editor, which can be launched by pressing "E". Click the browse button and choose the EXE file for your preferred image editor

File Management:

- **Confirm deletion of files**

If this is selected then Smart Pix will prompt you for confirmation before deleting files.

- **Confirm all drag drop actions**

If selected then Smart Pix will prompt you for confirmation before processing any drag drop actions (excluding a simple display), e.g. moving a file or directory or adding a bookmark.

- **Move files to the Recycle Bin on deletion**

If enabled then when deleting files they will be moved to your recycle bin. If not selected they will disappear to the great bit bucket beyond.

Other:

- **Show ToolTips when hovering mouse over controls**

If this is checked then a short explanation of the function of Smart Pix buttons and controls are displayed when you hold the mouse over them for a few seconds. You are also give full file information and its description if you hover the mouse over the image.

- **Enable support for Wheel Mouse navigation**

If you have a wheel mouse, such as Microsoft Intellimouse, enabling this option will allow you to browse files by rotating the wheel. Rotating the wheel up will select the previous file, rotating down will select the next file.

Also:

- [Viewing Options](#)
- [Other Options](#)

- Database Settings



Other Options

Full-Screen Mode

- **Use the same settings in normal and Full-screen**

If you select this option then Smart Pix will keep the same settings for Toolbar, status bar and Fast mode regardless of whether you are in Full-screen or normal mode. If you deselect it Smart Pix stores preferred settings for both normal and Full-screen mode, i.e. you might like images to be displayed at half size (using fast mode) while browsing in normal mode but full size when in Full-screen mode.

- **Do not maximize screen in Full-screen mode**

This probably seems a little oxymoronic, but by setting this option it speeds up the enabling and disabling of full-screen mode by not maximizing or restoring the screen. If you always run Smart Pix maximized anyway then it is recommended you enable this option.

Thumbnails in Disk Browse and Bookmarks mode

By default thumbnails in these modes are created as they need to be displayed and only stored in memory, however on a slow computer this can cause the display of thumbnails to take a long time. In this situation it is recommended to set this option so that Smart Pix saves a thumbnail file to disk every time it dynamically creates one, this will cost you about 7k of hard drive space per file but will significantly improve the display speed of thumbnails

- **Create permanent thumbnails when displaying**

This is the best option, however it will cost you some hard drive space (approximately 6-8k per file). Every time a thumbnail is displayed Smart Pix checks for a corresponding '.thb' file (e.g. for the file myimage.jpg the thumbnail file would be myimage.thb) and uses it for display. If it can not find it, it creates the thumbnail dynamically and then saves it to disk. In this way they next time you return to those files the thumbnails will be displayed very quickly.

- **Only save for images greater than x Kb**

If this option is selected then Smart Pix will only save thumbnails for image if they are over a certain size. You can specify what the threshold is for saving. Images larger than the threshold will be saved, smaller ones will not be. So the lower the value you set the faster thumbnails will display but the more disk space will be used.

Database Insertion

- **Prompt for a drive name when adding new source directories.**

If enabled then when adding new source directories from a CD-ROM Smart Pix will prompt you for a drive name to use for all directories on the CD. If not selected then Smart Pix will use the volume name for each drive and CD-ROM (you can change the drive name later under Source Directories)

- **Automatically create thumbnails when inserting files**

If enabled then whenever a new file is inserted into the database, Smart Pix automatically creates a thumbnail for the file. If it is not enabled then the file is given a default thumbnail and you will need to use the thumbnail builder to add a thumbnail later. While less convenient it is much faster to add files initially and create the thumbnails later.

- **Use Relative Path for CD-ROM drive**

This option is generally not needed by users and should be left unchecked, unless you have been supplied a pre-built database, e.g. a CD-ROM of categorised images, or are building one. More information is available on [using relative paths](#).

Other:

- **Beep on Error or Process Completion**

If you deselect this options then Smart Pix will suppress all beeping that normally occurs when an error is made or a process completed.

- **Use Flat-style buttons**

This option allows you to specify the 'button look'. By default 3D buttons are used, alternatively you can use the Flat ('Office 97' style) buttons.

Also:

- [Viewing Options](#)
- [Program Options](#)
- [Other Options](#)
- [Database Settings](#)



Database Settings

This tab is used for setting the options of the currently open database.

Database Name

This is the name of the current database, you can change it by editing the text in this box.

Location

This is directory where the database resides, if you want to change it you will need to use the Database Management tool.

Use attribute groups to allow categorisation of attributes

If this is enabled then Smart Pix will use attribute groups in View mode to make it easier to find the attributes you want. Otherwise Smart Pix will display all your attributes in a long list.

Show Edit Mode

This will hide the tab for Edit mode. It is generally not used except for databases being shipped on a read-only medium such as a CD-ROM.

Image Storage Method

This determines how Smart Pix should treat the image files that are referenced by this database.

- **Normal:** The first option tells Smart Pix to **leave files as is**, i.e. Smart Pix stores a reference to them but does not alter them in anyway.
- **False Extension:** The second option (registered version only) tells Smart Pix to **change the extension of all image files to a false one** (e.g. to .DLL or .SPM) this enables them to be viewed within Smart Pix but makes them largely invisible to other programs. You can change the files back to their original format at any time by deselecting this option.

Note: while this option only offers a minimal amount of protection, it is enough to hide files from children and less advanced users

If you are using multiple databases then other databases will not be able to access these files unless they too are using the same false extension.

- **Database Storage:** The third option (registered version only) **stores the image within the database** (as a BLOB, for the more technically inclined). As the database is encrypted, database storage coupled with password protection adds the greatest level of security to your image collection (Note: you are recommended to incorporate the back up of your Smart Pix database into your back-up program).

If you are using multiple databases then other databases will not be able to access files that you store within this database.

Even if you have already inserted your entire image collection, you can still change your storage method as Smart Pix will allow you to convert your existing files to the new storage method. New images that you later add will be automatically assigned the new method. **Read this section for information on Converting your Storage Method!**

Password (registered version only)

If desired, you can enable the password on start-up/open option and enter your password. This function limits access to the current database, meaning that without a password it cannot be accessed by Smart Pix or any other database application. Do not forget your password!

- **Close Smart Pix on incorrect password**

By default if a user opens a database and does not know the correct password, Smart Pix will still run but will not open the database, ie they can still use the 'Disk Browse' and 'Bookmarks' modes or choose to open a different database. If you would prefer that other users cannot run Smart Pix at all unless they know your password then you should check this item. Then as long as you have specified that your default database requires a password then, on starting, users Smart Pix will be prompted for a password and the application will close if they cannot supply it.

Also:

- Viewing Options
- Program Options
- Other Options

Other

Acquiring Images from a Scanner

Smart Pix supports the scanning of images from Twain compatible scanners. To open the Scan Dialog box click Edit|Acquire from Scanner.

The process of scanning images is as follows:

1. Select a filename and storage format

Browse to your preferred image directory and create a new filename and select a storage format. The two recommended formats are:

- **JPEG format** for images you want to view but not edit.
- **BMP format** for images you want to edit.

2. Select options

- **Insert file into database**

If you set this option the newly created image will be automatically inserted into the database after a successful scan.

- **Automatically increment filename after each scan**

If you are going to scan a lot of images you may want to have Smart Pix automatically create a file name for each new scan. Smart Pix will simply create incremental filenames. I.e. if you enter file.jpg for the first file, Smart Pix will create file2.jpg and file3.jpg for the second and third files, respectively.

3. Select scanner

If you have more than one Twain scanner you can select your preferred scanner by clicking the 'Select Scanner' button.

4. Press Scan

The scanner dialog box for your scanner will be displayed.

Smart Pix will advise you after each successful scan. When you have finished scanning files, press 'Close'.

Customising the look of Smart Pix Manager

You can hide or display the:

- Toolbar: Press CTRL+T or Window|Window Settings|Toolbar to toggle its display. You can also quickly hide the toolbar by double-clicking on it.
- Menu bar: Press CTRL+M to toggle its display. You can also hide it by pressing Window|Window Settings|Menu. (the Menu bar is never displayed in Full-screen mode)
- Status Bar: Press CTRL+B or Window|Window Settings|Status bar to toggle its display. You can also quickly hide the status bar by double-clicking on it.

Smart Pix also remembers your windows layout and position. By default Smart Pix stores separate settings for Normal and Full-screen modes, but you can disable this function under Options if you prefer consistency.

All settings are saved on shutdown.

If all else fails the panic key is Esc, which resets all the view settings to their default.

Running the Smart Pix database from CD-ROM

Important points if you plan to deploy a Smart Pix database on CD-ROM:

1. Smart Pix databases will not run from read-only devices without this file!

In order for Smart Pix to read a database from a read-only drive it needs to contain the file **Pdoxusrs.net** in the root of that drive. If you are planning to copy a database to a CD-ROM that will be run from that CD-ROM then copy this file from your hard drive (generally you can find it in C:\) to the ROOT of your CD-ROM drive, i.e. if Smart Pix is loading a database from a CD-ROM on E:\ drive then it needs to find the file E:\Pdoxusrs.net.

2. Use Relative Paths

Your CD-ROM drive may be E:\ but what if you give your CD of images and a Smart Pix database to someone whose CD-ROM drive is F:\, he will soon complain that Smart Pix can't find the files! What do you do? Use relative paths!

Smart Pix allows you to use the % sign to signify the CD-ROM drive.

Here is the method.

- i) Set the value for your CD-ROM drive to the hard drive letter where your images (the ones that you will copy to the CD-ROM) reside. E.g. if all the images that you want to put on your CD-ROM are on your D:\ set the CD-ROM drive value (under Options, Other Options) to 'D'.
- ii) Insert all your source directories into Smart Pix or if you have already inserted them use relocate to 'relocate' them to the same location. Now instead of your source directories appearing as D:\MyImages\Cars it appears as %:\MyImages\Cars but Smart Pix treats it as D:
- iii) Copy the images to your CD-ROM drive using the same directory paths (folder names, e.g. images in the above directory should appear in the folder MyImages\Cars of your CD-ROM)

When you give your CD-ROM to someone and he selects one of the images on the drive to display, he will be asked to set the value of his CD-ROM, and viola he can access all the images, even though his CD-ROM drive is F:\ and yours is E:\.

3. Include Thumbnails

If you have sufficient space you should include thumbnails to make it easier to browse the images on the CD-ROM. Smart Pix uses two kinds of thumbnails:

View and Edit mode thumbnails:

These are created by using the thumbnail builder, select Database|Build Thumbnails to build thumbnails for all files in the database.

Disk Browse and Bookmarks mode thumbnails:

Creating these thumbnails may not be necessary because Smart Pix can create these dynamically (i.e. as they are needed) however it is still recommended that you create these as on a slow computer or a slow CD-ROM it may take a while to display them if they need to be created

dynamically.

To create saved thumbnails you need to select the option 'Save thumbnails permanently to hard drive after auto creation'. Then you need to open all your image directories in Disk Browse mode and display the thumbViewer, making sure you view each 'page' of the ThumbViewer so Smart Pix creates a thumbnail for all your files. These will appear as '.thb' files in the same directory as the file name e.g. myimage.jpg will have the thumbnail, myimage.thb. You should have one '.thb' file for each of your images, except BMP images. Copy these '.thb' files to the CD-ROM along with the images.

4. Optimise your database settings

Remember the database settings (i.e. all settings under the Database Settings tab in Options) cannot be changed once the database is on CD-ROM, so it is very important that you choose them wisely. For example, if you have set a password then everyone who receives the CD will need to know the password.

These are the recommended settings:

Standard CD-ROM image collection:

- Use Attribute Groups: Yes, if you have than 30 attributes.
- Show Edit Mode: No
- Storage Method: Normal (so images can be browsed with or without Smart Pix)
- Password: None

Secure CD-ROM image collection:

- Use Attribute Groups: Yes, if you have than 30 attributes.
- Show Edit Mode: No
- Storage Method: Database storage (images can only be browsed with Smart Pix)
- Password: Yes
- Close on password error: No

5. Smart Pix installation

You can include a Smart Pix installation on the CD-ROM with your images, however you must include all files within the original installation and cannot include any username or registration key. If you would like to include a fully registered version of Smart Pix on each CD-ROM please consult us for OEM discounted pricing.

For greatest compatibility with software on other computers, Xequite Software recommends shipping the full BDE version of Smart Pix. Pricing and functionality are identical. Contact us for download instructions or visit our web support page for a link.

Note that Smart Pix will not function without being installed, i.e. copying the Smart Pix directory to the CD-ROM will not work, as some required DLL's have not been installed. However if you want a program that you can run straight from the CD-ROM then you can also ship EZ-Pix (available from our web site) with the CD-ROM. EZ-Pix does not support Smart Pix databases, but it will allow browsing the CD-ROM directories and supports the '.thb' thumbnails.

To include EZ-Pix on your CD-ROM, simply install it to your hard drive and then copy it to the CD-ROM.

Using Relative Paths

If you have been supplied a pre-built database, e.g. a CD-ROM of categorised images, you may have noticed that the source directories contain a % sign instead of a drive letter. This % sign is a relative path, that is instead of using an exact path, e.g. 'd:\my pictures' the database will contain relative paths, e.g. '%:\my pictures' where the percentage sign is automatically replaced by the drive letter for your CD-ROM drive (though in actuality it does not need to be a CD-ROM drive, e.g. you could copy all your files to your hard drive and use that letter instead). In this way other users of the same pre-built database don't need to relocate all their source directories to access the images they simply need to set this value.

If you are planning to deploy a Smart Pix database on CD-ROM [read this important information](#).

Creating Relative paths

If you are building a database of categorised images where you will supply the images and database to other users then it is advised that you use relative paths.

For example, let's say you have a set of images in C:\images that you will supply to users on CD-ROM, if you set the CD-ROM value to 'C' then your source directory will appear as %:\images. When you supply the CD-ROM to users and they install the new database and run Smart Pix they will be prompted for a value for their CD-ROM drive and can access the images without having to configure their source directories.

Enabling relative paths is as simple as setting the CD-ROM value with the drive letter for the hard drive on which they exist.

From then on when you add any new source directories for this drive it will use a % sign rather than this letter.

If you have already created your directories and want to change them to the relative path then set the value for the path and then in [Source Directories](#), Relocate each directory on this drive to its current directory, it may seem silly but after 'relocation' the directory will use the relative path rather than the exact one.

Registration and Licensing

What is registration?

Smart Pix Manager is "Shareware". This means that legally you are entitled to evaluate the software for up to 30 days without any obligation to pay. After 30 days, if you continue to use it, you must register your copy with us for a small fee.

Registration entitles you free technical support and updates (though not upgrades) to the software. Registration also entitles you to discounts on upgrades and may also entitle you to discounts on other software releases from Xequite. We will also send you information bulletins by email to let you know about what's happening with Xequite's products.

Why should I register?

Why should I register?

There are also some minor restrictions in the unregistered version. This is not to say that I don't trust you but sometimes us humans just need a little incentive to get off our behinds and do something.

Main benefits from Registering

EXTRA FUNCTIONALITY

1. Removal of the nag screen that appears on start-up
2. Removal of the limit of 2000 files
3. Removal of the limit of 20 Attributes
4. Removal of the limit of 5 Attribute Groups
5. Added option of having Smart Pix automatically change and support false extensions for image files (e.g. myimage.DLL) so they are not viewable in other programs.
6. Added option of storing your image files within your Smart Pix database for a very high level of security.
7. Password protection.
8. Creation of HTML thumbnail indexes so you can view your images with your web browser
9. Exporting of database entries
10. Single click moving or copying of files
11. Support for multiple databases

SUPPORT

If you should have any problems with the program you can contact us for a solution.

SUPPORTING FURTHER DEVELOPMENT

The amount of time that we can justify spending on Smart Pix is largely determined by the recognition we receive.

HAVE YOUR SAY

Smart Pix has largely been developed with ideas of my own and feedback from registered users. This does not necessarily mean it does what *you* want it to do. The best way to ensure that Smart Pix performs to your liking is to register your software and ply me often with your recommendations for enhancements and new features. If I add it, you will be acknowledged in the documentation and receive the new version free!

BEST OF ALL- IT'S CHEAP AND ORDERING IS QUICK

Registration is easy and cheap (less than US\$30), and most orders are processed within 24 hours, so register now!

How can I register?

How can I register?

There are four ways you can register Smart Pix Manager:

1. Register online with our Secure Server (Credit Card only!)

Direct your browser to <http://www.xequte.com/reg.html>
Follow the instructions.

2. Via standard Post

Go to the [registration form](#) and print it out.
Send completed form and payment to:

Xequte Software
5 Abilene Cres, Churton Park
Wellington
New Zealand

3. Via E-mail (Credit Card only!)

Go to the [registration form](#) and copy all the text. Then paste it into an e-mail and fill in the details.

Forward to sales@xequte.com.

For extra security you might like to send the part of the credit card in your main e-mail and the rest in another. (e.g. write your number as 4545-5555-xxxx-xxxx in the first e-mail and then xxxx-xxxx-2121-2121 in the second)

4. Via Fax (Credit Card only!)

Print out the registration form below and fax to us. You can obtain our new fax number from our web page.

Cost:

US\$29.00 per copy
+ US\$3.50 per order (Financial transaction fee)
= US\$32.50

You can use the world currency converter at <http://www.oanda.com/converter/classic> to convert this to your own currency

The Financial transaction fee is only charged once per order (i.e. even if multiple copies are purchased).

Includes:

- * Full registered version
- * 12 months e-mail support
- * Free Updates
- * Discounts on other Xequte products and Upgrades

Payment by:

- Credit card (**Visa, MasterCard, American Express**)
- Personal Cheque (Must be in your own currency! I.e. if you have a Canadian bank send a cheque in Canadian dollars)
- Cash (Note: with cash payments we cannot be held liable for any loss. Do not send coinage, only notes)
- Bank transfer (contact sales@xequite.com for details)

Notes on payment in your own currency

If you are sending currency other than NZ dollars (or sending cheques):

- Using a newspaper or the world currency converter (<http://www.oanda.com/converter/classic>), convert the NZ\$ value to your own currency using the NZ\$ buy price.
- Record the date at which you worked out the conversion rate.
- If paying by cash, round the result UP to the nearest paper note (or notes), i.e. 3,926 yen, send four 1,000 yen notes.

Alternatively e-mail us for a quote in your local currency

We will confirm receipt of your order within 24 hours (excluding weekends and public holidays) by e-mail and supply you with a registration key.

Note: if you do not have an e-mail address we will reply by standard post only.

[Smart Pix Manager Registration form](#)

Registration Form

SMART PIX MANAGER REGISTRATION FORM

Customer Details:

First Name: _____

Last Name: _____

E-mail Address: _____

Please confirm e-mail: _____

Address:

City: _____

State/Province: _____

Postal Code: _____

Country: _____

Phone: _____ []Home? []Work?

Payment method:

[]Credit card, []Personal Cheque, []Cash.

CREDIT CARD DETAILS:

[] Visa

[] Mastercard

[] American Express

Credit Card #: _____

Expiration Date: __/__/__(MM/DD/YY or MM/YY)

Name on card: _____

PERSONAL CHEQUE DETAILS

Name on cheque, if not your own: _____

Cheque number: _____

Currency: _____

Conversion rate: _____

Date of this rate: _____

CASH DETAILS

if other than US\$:

Currency: _____

Conversion rate: _____

Date of this rate: _____

Items required:

Smart Pix Manager,	_____ copies at US\$29.00	US\$_____
Financial transaction fee		US\$3.50

Total: _____ NZ\$_____

(You can use the world currency converter at <http://www.oanda.com/converter/classic> to convert this into your own currency)

Order confirmation should be:

☐ Posted

☐ E-mailed

Other:

What Operating system are you using?

☐ Win 95/98, ☐ Win NT, ☐ Other: _____

Where did you hear about this product?

What improvements would you like us to make to the program?

Have you had any problems with the program?

Licensing Details

1. Distribution

This shareware software may be freely distributed, provided that:

1. Such distribution includes only the original archive supplied by Xequate. You may not alter, delete or add any files in the distribution archive.
2. The distribution does not include a registration number or information on disabling the registration features. You are also forbidden from distributing a registered version of Smart Pix Manager.
3. No money is charged to the person receiving the software, beyond reasonable cost of packaging and other overhead.

For further information about redistribution of Xequate products e-mail us at sales@xequate.com

2. License

By receiving and/or using Xequate software products, you accept the following Evaluation and Registered User Agreement. This agreement is a binding legal agreement between Xequate and the purchasers, users or evaluators of Xequate's software and products.

3. Evaluation (Unregistered) and Registered User Agreement

You may evaluate Smart Pix Manager for maximum of thirty calendar days, after which you must register the program with Xequate or remove the software from your computer.

You may allow other users to evaluate copies of the unregistered Shareware. All evaluation users are subject to the terms of this agreement.

The evaluator/user/buyer/owner is not allowed to attempt to reverse engineer, disassemble or decompile Xequate software and products.

Xequate's name and any logo or graphics file that represents our software may not be used in any way to promote products other than our software. All parts of Xequate software and products are copyright protected. No program, code, part, image, video clip, audio sample, text or computer generated sequence of images may be copied or used in any way by the user except as intended within the bounds of the single user program.

The evaluator/user/buyer/owner of Xequate software will indemnify, hold harmless, and defend Xequate against lawsuits, claims, costs associated with defence or accusations that result from the use of Xequate software.

Xequate is not responsible for any damages whatsoever, including loss of information, interruption of business, personal injury and/or any damage or consequential damage without limitation, incurred before, during or after the use of our products. Our entire liability, without exception, is limited to the customers' reimbursement of the purchase price of the software (maximum being the suggested retail price as listed by Xequate) in exchange for the return of the product, all copies, registration papers and manuals, and all materials that constitute a transfer of ownership from the customer back to Xequate.

Each registered copy of Xequate software may be used in only one single location by one user. Use of the software means that you have loaded the program and run it or have installed the program onto a computer. If you install the software onto a multi-user platform or network, each and every individual user of the software must be registered separately, except only in the case of a multiple

user site licence, in which case you are limited to the number of users as expressly stated on your multiple user site licence contract.

You may make one copy of the registered software for backup purposes, providing you only have one copy installed on one computer being used by one person. If any person other than yourself uses Xequite's software registered in your name, regardless of whether it is at the same time or different times, then you are considered to be in violation of this agreement.

The sale of and or distribution of registered copies of this software is strictly forbidden. It is a violation of this agreement to loan, rent, lease, borrow, or transfer the use of registered copies of Xequite software products.

About Smart Pix Manager

Getting Technical Support

Xequate provides technical support to registered users. This support includes help on any technical or functional problems you may experience with Smart Pix Manager.

Questions from those evaluating software will be addressed if they relate to evaluation problems or bugs.

You should first check the troubleshooting FAQ this can be accessed under the Help menu of Smart Pix.

If this doesn't shed any light then send an e-mail to support@xequate.com, with your registration name in the subject line. Please add "- Urgent" to request extra priority.

In your message body enter:

- Your name
- Registration name
- Version of Smart Pix Manager
- Version of Windows
- Description of problem, including:
 - What happens, what symptoms occur, what error message comes up?
 - When it happens, e.g. after you have viewed a large file, every time you run.
 - What mode you are in; View, Browse, Edit.
 - Where it happens, e.g. in the options dialog.
 - Any methods you are currently using to work around the problem
 - Any programs that you are running at the same time as Smart Pix, i.e. check your start-up directory and list anything that appears, also check your system tray, do you have anti-virus or other software programs running. Does closing any of these programs cure the problem?
 - If the problem relates to printing, what printer are you using and what driver?
 - If it relates to other hardware issues, please describe the relevant hardware and respective drivers.
 - Any other background information that may be relevant.

Feedback

We are always keen to receive feedback on our programs from users, particularly:

- How our product can be improved.
- What new features you'd like.
- What current features you most use.
- What current features you never use.
- Any problems you might experience.
- What you like about the product.
- What you dislike about the product.

Please e-mail us at sales@xequite.com with "Feedback:" in the subject line.

If you don't have e-mail we also accept standard mail at

5 Abilene Cres, Churton Park
Wellington, New Zealand.

However we are better at responding via e-mail, so please include an e-mail address if possible.

Getting Program updates

Updates can be downloaded from our web page at:

<http://www.xequte.com>

We send information about updates and upgrades to all registered users via e-mail, including details such as what additional features have been added

Acknowledgements

Foremost, Thank you to **Sean Cross** for help and advice on programming, application design and bug eradication.

Smart Pix was developed in **Delphi 3.02**, we thank Borland (www.inprise.com) for writing such a powerful - yet easy-to-use - development language. Visual Basic is for pussies!

Appendix

In Smart Pix we use the term attribute to refer to the descriptions which you assign to an image. For example, you might add the attributes 'German', 'blue', 'sports car' to a picture of a blue Porsche. In this way if you perform a search for German sports cars this file will be one of those returned.

While nouns or adjectives are most common, obviously there is no restriction to the descriptions that might be used, e.g.:

Bill Clinton, American, President, playing instrument, saxophone, unmelodious.

In this context, a reference means 'information on how to locate a particular file'.

For each image Smart Pix only stores a reference in its database, i.e. the database contains information on where the file is located on your hard drive, but not a copy of the image itself (unless you are using database image storage).

Smart Pix uses a series of tables to store a list of all your images and their path and any attributes that you have assigned to them. There are actually eight tables that are used in a relational format, in this way the size of database files are kept to a minimum.

This means that while a picture may be zoomed in or out, Smart Pix ensures that it doesn't change the original x and y dimensions of the image relative to each other. In other words, if you have a picture 5-cm wide by 10-cm high no matter how you zoom or shrink it the height will remain twice the width.

At the core of your Smart Pix database is a list of source directories. You need to inform Smart Pix where on your computer your images are located, these locations are termed 'source directories'. Not only does this information allow Smart Pix to know where to find your images but it also tells it where to look for new images when you perform an update.

Smart Pix does not change the images in these directories in any way (unless you choose to use a false extension or Database Storage).

What are ~ Files?

Files with a tilde(~) at the beginning of a name (e.g. ~file.bmp) or at the beginning of an extension (e.g. file.~bm) are temporary files created by Smart Pix (and other programs) and can generally be deleted.

Smart Pix creates two kind of temporary files:

- Images which have been inserted into the database and have a tilde in the extension, e.g. xyz.~jp. By default Smart Pix does not delete images after inserting them into the database, merely renames them to a temporary name so that you can back them up before removal from your system.
- Temporary files, if you are using the False Extension or Database Storage method, Smart Pix sometimes needs to create temporary files, for example if you want to launch an image in an external viewer. These files will have a tilde at the beginning of their name, e.g. ~xyz.bmp. Generally Smart Pix will clean up these files automatically, but sometimes it is unable, i.e. if you have launched a file into Paint and leave it open when you close Smart Pix, Windows will not allow Smart Pix to delete the file.

Load image in background

This option allows you to choose whether an image is displayed progressively (as it is loading) or loaded in the background and then displayed. If you choose to load in background then when you select a new file, the existing image remains visible until the new image has been completely loaded.

Function of Fast Button

If the Fast button on the toolbar is depressed then Smart Pix will expedite the loading of images by loading only a portion of their image information (i.e. displaying half or quarter size). This setting allows you to choose what effect it should have on JPEG files.

Never prompt for JPEG compression setting when saving

By default, whenever saving a JPEG file you are prompted to choose a compression setting, if you would prefer you can set a value here that will be used for future saves.

Default Animation Delay

If you find the GIF animation is too fast or slow for your system you can alter the default delay between frame display here. Note: You can alter the animation delay for individual files with the ',' and '.' (i.e. these transcribe to the < and > keys) during display.

Store preferred GIF delay for each file

When this option is set then if you alter the animation delay for a GIF (using the ',' and '.' keys) then Smart pix will remember the setting and use it when the image is displayed next time.

Selecting new image cancels loading of current image

If you select the 'Selecting new image cancels loading of current image' option then you can cancel a BMP or JPEG load by clicking on a new image otherwise selecting a new image during loading has no effect.

Resize new image windows to fit image

If this is checked then when you launch an image into a new image window the window will be resized so that the image is displayed without scrolling.

This option allows you to choose whether Smart Pix should remember the last directory (ie the directory you were in when you closed Smart Pix the last time you ran it), or default to a specified one.

This option allows you to specify an external editor, which can be launched by pressing "E".

Confirm deletion of files

If this is selected then Smart Pix will prompt you for confirmation before deleting files.

Confirm all drag drop actions

If selected then Smart Pix will prompt you for confirmation before processing any drag drop actions.

Move files to the Recycle Bin on deletion

If enabled then when deleting files they will be moved to your recycle bin otherwise they will be permanently deleted.

Show ToolTips when hovering mouse over controls

If this is checked then a short explanation of the function of Smart Pix buttons and controls are displayed when you hold the mouse over them for a few seconds.

Enable support for Wheel Mouse navigation

If you have a wheel mouse, such as Microsoft Intellimouse, enabling this option will allow you to browse files by rotating the wheel.

Use the same settings in normal and Full-screen

If you select this option then Smart Pix will keep the same settings for Toolbar, status bar and Fast mode regardless of whether you are in Full-screen or normal mode.

Do not maximize screen in Full-screen mode

If you set this options then it speeds up the enabling and disabling of full-screen mode by not maximizing or restoring the screen.

By default thumbnails in these modes are created as they need to be displayed and only stored in memory, however on a slow computer you may want to have Smart Pix permanently save thumbnails to speed up display.

Create permanent thumbnails when displaying

If set, then every time a thumbnail is displayed Smart Pix checks for a corresponding thumbnail file and uses it for display. If one cannot be found, it creates the thumbnail dynamically and saves it to disk.

Only save for images greater than x Kb

If this option is selected then Smart Pix will only save thumbnails for image if they are over a certain size. You can specify what the threshold is for saving. Images larger than the threshold will be saved, smaller ones will not be. So the lower the value you set the faster thumbnails will display but the more disk space will be used.

Beep on Error or Process Completion

If you deselect this options then Smart Pix will suppress all beeping that normally occurs when an error is made or a process completed.

Use Flat-style buttons

This option allows you to specify the 'button look'. By default 3D buttons are used, alternatively you can use the Flat ('Office 97' style) buttons.

Database Name

This is the name of the current database, you can change it by editing the text in this box.

Location

This is directory where the database resides, if you want to change it you will need to use the Database Management tool.

Use attribute groups to allow categorisation of attributes

If this is enabled then Smart Pix will use attribute groups in View mode to make it easier to find the attributes you want. Otherwise Smart Pix will display all your attributes in a long list.

Show Edit Mode

This will hide the tab for Edit mode. It is generally not used except for databases being shipped on a read-only medium such as a CD-ROM.

This determines how Smart Pix should treat the image files that are referenced by this database.

- **Normal:** The first option tells Smart Pix to leave files as is, i.e. Smart Pix stores a reference to them but does not alter them in anyway.
- **False Extension:** The second option tells Smart Pix to change the extension of all image files to a false extension (e.g. to .DLL or .SPM), this enables them to be viewed within Smart Pix but makes them largely invisible to other programs.
- **Database Storage:** The third option tells Smart Pix to store the image within the database. As the database is encrypted, database storage coupled with password protection is the most secure image storage method.

Press F1 for more information

If desired, you can enable the password on start-up/open option and enter your password. This function limits access to the current database making it inaccessible by Smart Pix or any other database application without a password.

- **Close Smart Pix on incorrect password**

If you would prefer that other users cannot run Smart Pix at all unless they know your password then you should check this item.

Prompt for a drive name when adding new source directories.

If enabled then when adding new source directories from a CD-ROM Smart Pix will prompt you for a drive name to use for all directories on the CD, otherwise it will use the volume name of the drive.

Automatically create thumbnails when inserting files

If enabled then whenever a new file is inserted into the database, Smart Pix automatically creates a thumbnail for the file. Otherwise the file is given a default thumbnail and you will need to use the thumbnail builder to add a thumbnail later.

Use Relative Path for CD-ROM drive

This option is generally not needed by users and should be left unchecked, unless you have been supplied a pre-built database.

