

TinyCAD for Windows

Version 1.20

Tell me about...

[Introduction to TinyCAD](#)

[Drawing a Design](#)

[Printing a Design](#)

[Introduction to Libraries](#)

Reference...

[A Guide to the Toolbar](#)

[A Guide to the Menu Bar](#)

[A Guide to Keypresses](#)

Registration

To make full use of all the facilities please carefully read the Drawing a Design section and the Libraries Section.

This program is Copyright © 1994,1995 Matt Pyne. It is licensed to you at no charge. The license agreement follows.

The program, help file, sample designs and library files are all Copyright © 1994,1995 Matt Pyne.

These files may be distributed without payment as long as all the files are kept together in their original format.

No charge, of any kind, in any form, may be made for the distribution of these files.

This license can be terminated at any time simply by the deletion of all copies of this program held by you.

This program was written in Windows NT using Microsoft's Foundation Class Libraries.

An Introduction to TinyCAD

Welcome to TinyCAD!

This program is an entry level Circuit Design package. It contains all the necessary features to allow you to draw your circuit diagrams in a professional manner.

Once you have drawn your design, you can use the special functions to automatically add symbol references, check your design against rules of correctness and create a parts list.

You may print your design to any supported Windows printer. If your design is larger than a single page then it can be either scaled to fit on a single page or printed across many pages.

A large number of pre-drawn symbols are supplied to enable you to start right away without having to draw your own. You can, of course, modify or add to the symbols supplied using the library editing features built into this program.

Some examples of designs that can be drawn using this package are also supplied. Looking at these will not only show you the power of this program, but also demonstrate how to use some of its features.

Drawing a Design

Designs are created from in-built objects such as wires, junctions, *etc.*, and from imported component symbols, such as diodes, transistors, *etc.*

Tell me more about...

[An overview of how to draw a new design](#)

[Using Wires, Junctions](#)

[Using Symbols and No Connects](#)

[Adding Power](#)

[Using Labels](#)

[Adding Buses](#)

[Adding Text and Annotations](#)

An overview of how to draw a new design

It is essential that you use each of the tools correctly for TinyCAD to function properly. You must, for example, use wires not lines to connect components. If you were to use lines, the special tools, which are an important part of this program, would not function correctly.

It is also important that for the majority of operations you use the grid snap feature. This ensures when a component is connected to a wire that the connection point is at the very end of the wire. Without snapping to the grid it is very hard to ensure that the wire connects exactly to the end of a component's pin. Unless it does so they are not considered connected. The same is true of junctions. Unless a junction is placed exactly at the point where the two wires cross, they are not considered connected.

Designs are drawn by using the drawing tools, which are selected in the Toolbar. Each of the tools is detailed in the Toolbar Reference Guide.

Commonly used tools can be selected using the keyboard. You may find, once you have learned the key presses, that it is faster to use the keyboard than repeatedly returning to the toolbar or menu with the mouse pointer.

Some of the tools use an edit window separate from the design window. When this window is highlighted you cannot select a new tool using the keyboard. Ensure the design window is highlighted before pressing a key. This can be achieved by clicking in the design window, normally with the right hand mouse button or on the window's title bar.

Whilst drawing an object you may wish to move to another area of the design, so that you can move the object to a part of the design not currently shown. This can be achieved by using the scroll bars at the sides of the design window, or by pressing the C key ('C' for centre), this will only work if the design window is highlighted. You can also zoom in and out by using the + and - keys.

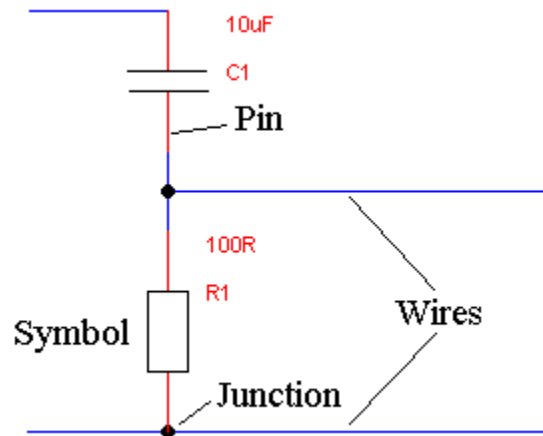
Once an object has been placed you may want to change its properties. Select Edit Item in the Edit menu, then click with the left hand mouse button on the object you wish to change. This will cause a dialogue box to be displayed which will allow you to change the object. Remember, not all objects can be edited, and clicking on such objects will have no effect.

You can move objects by using the Move Block and Drag Block options in the Edit menu. Objects can be deleted using the Delete Item or Delete Block options in the Edit menu.

A final tip - remember to save the design regularly! It is always possible that the machine will crash or that you will make a mistake causing you to want to revert to an earlier version of the design

See also: [Toolbar Reference](#)

Using Wires, Junctions



The correct use of wires and junctions

Wires are used for connecting components of your design. Where two wires cross they are not considered joined unless a junction is used at the crossing point.

Junctions are also required when a pin or a power is connected to the middle of a wire.

When connecting a wire to a symbol, wires must connect to the very end of the pins; otherwise it will not be considered connected. To ensure this happens use the Snap to Grid option (in the View Menu).

See also: [Junction](#), [Wire](#)

Using Symbols and No Connects

Symbols are the heart of a design. They represent the components in the design.

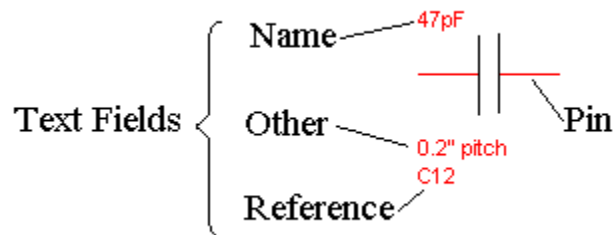
Symbols are stored in groups in symbol libraries. Each library contains a different collection of symbols. Each symbol is accessed in the library by a name. Every symbol in the library must have a unique name.

At any one time a certain number of symbol libraries are in use. You can extract a symbol from one of these libraries and place it into your design using the Get option in the Library menu.

Enter the name of the symbol you want and each library will be searched (one after the other), until a symbol of that name is found.

If no symbol of the name you entered is found then you are told so, and the operation is cancelled. If the symbol is found then it is displayed next to the mouse pointer. You can move the symbol around the design and place it using the left hand mouse button.

The libraries to be searched are listed in the libraries option of the Library Menu. Before you can start using symbols at least one symbol library must be listed here. (See the Library Menu, in the menu reference for more help on adding a library to this list).



A symbol can be rotated or mirrored before it is placed. Once it is placed you can still edit all its details, by using the edit item in the Edit menu.

Each symbol has three text fields associated with it.

- The Name field

This is the name of type of the component that the symbol represents. If the component has a value then insert the value here. For example, if it were a resistor then the name might be 330R or 4k7. If the symbol represents a phono connector then the name might be Phono.

- The Reference field

This is an identifier that is unique to the whole design. For example, there may be many resistors each with a Name field of 330R, however, each resistor must have a different Reference. There will only be one symbol with reference R1 in a design.

- The Other field

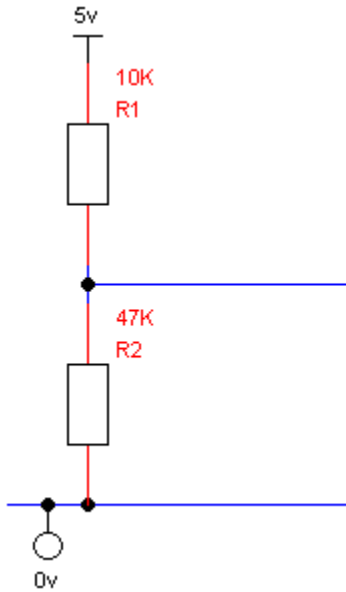
This is not defined in use and is to allow any extra information about the symbol to be added with it. For example, this may be a power rating or outline type.

You can move its text fields around by selecting the symbol for editing, and then clicking on the field you wish to move. The field will now move with the mouse.

All the pins on a symbol must be connected. If you do not wish to connect to a certain pin then use the no-connect option on the Toolbar. Place a no-connect on every pin that is not to be connected to anything else. If you do not do this then the Design Rules Checker in the Special menu will warn you of unconnected pins on symbols.

See also: No Connect, Get

Adding Power



The correct use of power objects

Power objects in your design show where power is connected into your circuit. Various shapes of power symbols are defined.

You must always make the connection to power at the end of the line. A junction may be necessary if the connection is to the centre of a wire or where wires cross.

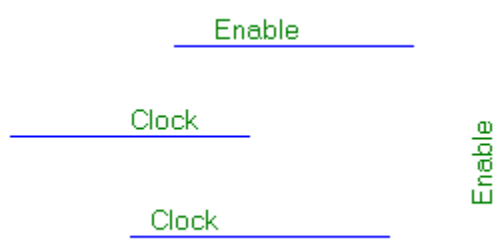
The shape of the power object is ignored it is the value of the power item which is important. All items connected to power objects of the same value are considered connected together.

Some component symbols, such as the 74 TTL library symbols, are automatically connected to power. To ensure the power is correctly connected, always use the same power names that are used in the library. For example, when using the 74 TTL library use the power names GND and VCC for 0v and 5v respectively.

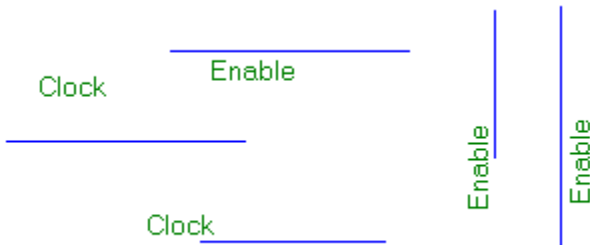
See also: [Power](#)

Using Labels

Labels enable you to make connection between points on your design which are some way apart. They are also useful for when many connections are required to the same point.



Correctly placed labels



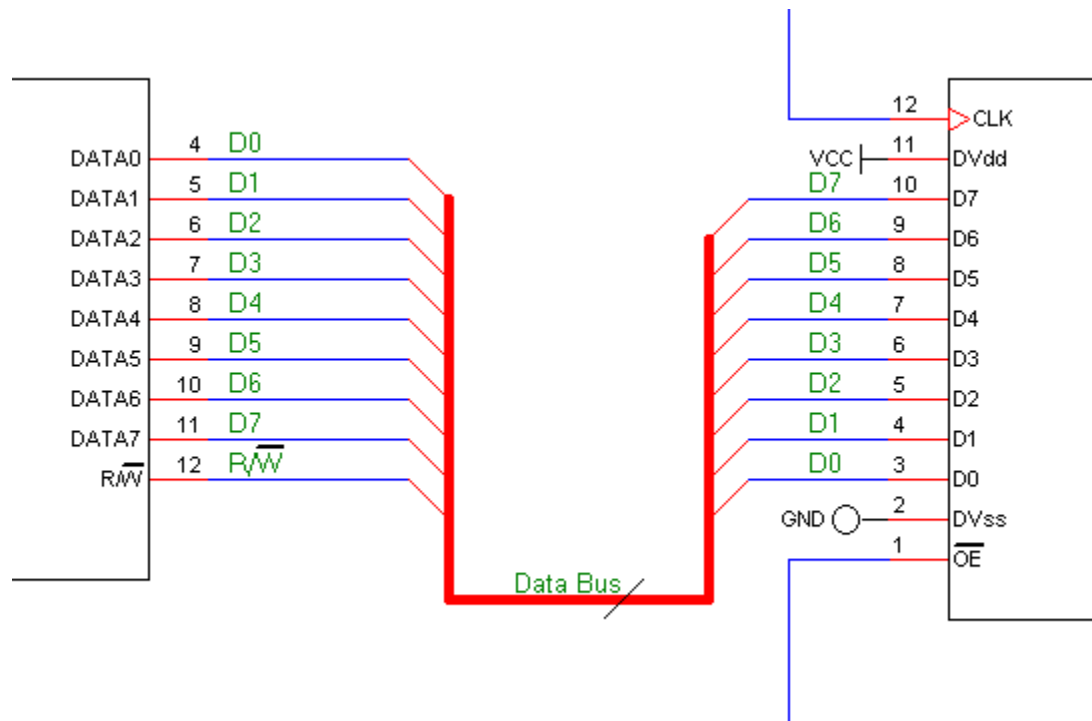
Incorrectly placed labels!

A label should be placed above or alongside a wire. The label is considered connected at the bottom left hand corner of the label when the label is horizontal (Right) and the bottom right hand corner when the label is vertical (Up).

All wires with the same label name will be considered connected together. This way a connection between the wires is formed without you having to actually draw it.

See also: [Label](#)

Adding Buses



A correctly drawn bus

Buses can be used to indicate a large number of connections. To help you draw a bus the repeat options are present.

To create a bus, first draw the bus near where you wish to connect it. Now add a bus entry to the bus. Press 'R' (for repeat in the Edit Menu) to repeat this as necessary for the number of entries you wish to make.

Draw a wire from the bus entry to the connection point. Now press 'R' again, to complete all the wire connections.

Finally you must add the labels. Place the first label. Depending on your repeat options the label name will be updated automatically. Place a label over each wire.

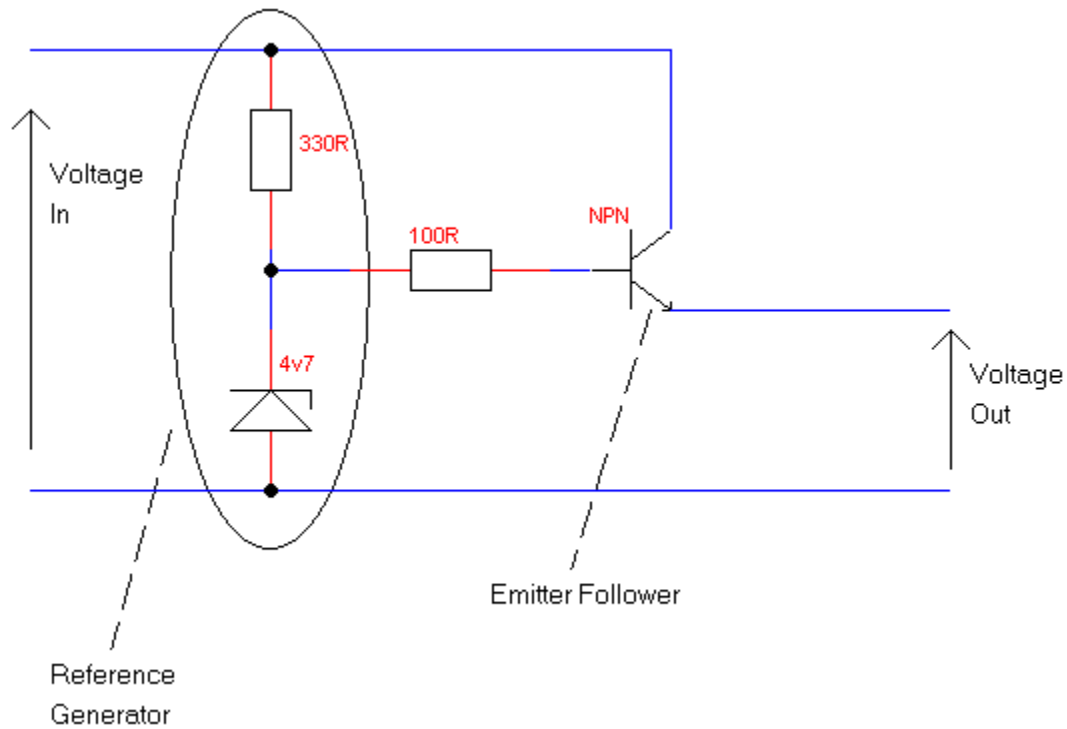
Now the bus connection is complete!

Use the same names for the bus entries on all connections to bus; however, the order of the names is unimportant. Buses do not require junctions anywhere on them.

Once a bus is in place, you may name the bus using the Bus Name tool. You may use this to place some text next to the bus. The name can indicate how many conductors the bus represents, by specifying just a single number, or it may qualify what the bus is for example by calling it "Data Bus" etc.

See also: [Bus](#), [Bus Entry](#), [Label](#), [Wire](#), [Get](#)

Adding Text and Annotations



An example of the use of annotations

You may add the annotations; text, lines, dashed lines, rectangles, ellipses and arcs. All these objects will be ignored by the special tools.

Annotations may cross wires, symbols and junctions without affecting them. How these objects are used is completely up to you.

See also: [Arc segment](#), [Dashed Line](#), [Ellipse](#), [Line](#), [Rectangle](#), [Text](#)

Printing a Design

Once your design is drawn it can be printed to any Windows-supported printer.

The printing options available are outlined in the Print option in the File Menu, detailed in the Menu Reference guide.

A design can be scaled to fit the page it is to be printed to. If the design will not reasonably fit on a single page then it can be 'tiled' across many pages. That is, each page will contain a different section of the design. Once all the pages have been printed, the pages can be stuck together to form the whole design.

The design, when shown on screen, is in colour. When printing to a monochrome printer, it is best to print only in black and white. Otherwise the printer will attempt to use greys for each of the different colours. This can be undesirable because it produces a poor quality printout. For this reason the "all colours to black" option is provided. When this option is checked the entire design will be printed in black and white only. Should you wish to use a colour printer, simply un-check this option.

For the best results when drawing a small design, use the Printer Setup option in the Page Setup dialogue. This will ensure the design's dimensions will have the same dimensions as the printer's output, making scaling unnecessary.

If you do have any problems when attempting to print, before blaming TinyCAD, try printing using a different program which you know to work. This will help sort out any problems which may be caused not by this program, but by the printer or Windows being incorrectly set-up.

See also: Page Setup, Print

An Introduction to Libraries

Component symbols form a very important part of laying out designs. Symbols are collected together in symbol libraries. You may edit and create your own new symbols and libraries.

It is unlikely that the symbol libraries provided can ever cover all the symbols you could ever want. This program has been designed to allow you to create your own symbols very easily.

Tell me more about...

[Selecting libraries](#)

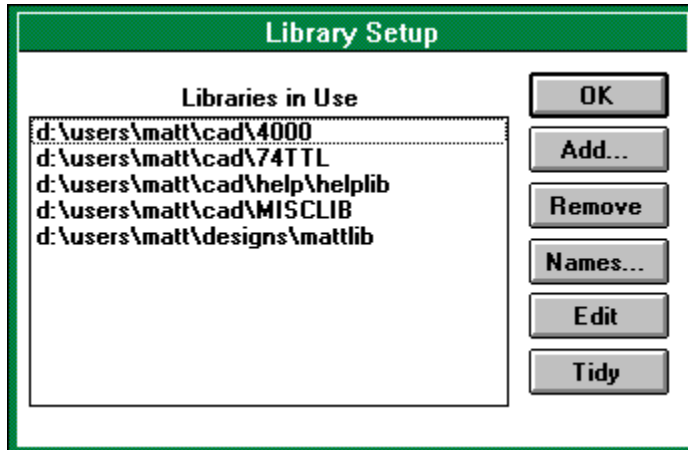
[Editing and adding symbols](#)

[Creating a new symbol library](#)

See also: [Library Menu](#)

Selecting libraries

Before any symbols can be used from a library, the library must be selected as in use. This is done by using the Libraries option in the Library menu.



This dialogue displays a list of libraries in use. Before a library can be edited or before a symbol can be extracted from a library it must be listed here. Once the library is listed then you can extract symbols from it using the Get option in the Library menu. If it is not listed, then the Get option will not examine that library for symbols and the symbol will not be found.

To add a library to this list click on the Add button. A file selection dialogue will appear. Select a library index file (with a .idx file extension). The selected library will be added to the list. To remove a library from the list click on the library in the list to select it and then click on the Remove button. This does not, in any way, delete the file and library is still available to others. To actually delete the library you must use the File Manager.

Libraries that do not exist can also be listed here. If the library does not exist, then you will be informed every time the library's index is read. This normally occurs when TinnyCAD is first started and re-read libraries option in the Library menu is selected.

The non-existent libraries are not removed from the list because they can be edited. As soon as the first symbol is saved into the library it is created automatically.

In this way you can create a new library. First click on the Add button. Now enter the name of a library that does not as yet exist. This library name will be added to the list, although you will be warned it cannot be read. Now select the library and click on the Edit button. You are now able to edit the library - as though it did exist. As stated above when you now store a symbol to the library for the first time it will be created automatically.

See also: Libraries, Re-read all Libraries, Store Symbol

Editing and adding symbols

Symbols are created from normal objects found on the Toolbar. They may contain any of these objects except other symbols.

If the symbol does contain any objects with special functions (such as a power item or a wire) then these object will be treated as though they were annotation. All their special functions are lost when used in a symbol.

To edit an existing symbol, first select the library you wish to edit in the Libraries option of the Library menu.

Next use the Select Symbol to Edit option in the Library menu. Enter the name of the symbol you wish to edit when prompted by a dialogue. If you are unsure of the name of the symbol use the Names button in the Libraries option to list the names of all of the symbols in the library.

When the symbol has been selected you may place it anywhere in the current design window by clicking with the left hand mouse button.

Once the symbol has been placed it may be edited in the same way that a normal design can be edited, with the exception no symbols be in inserted and pins may be added.

When you have finished use the Store symbol option in the Library menu. This will enable you to save the new symbol back to the library. The dialogue box automatically remembers the details of the last symbol selected. If you enter a different name here then the symbol will be store under the new name. If you enter the name of an existing symbol then it will replace the old symbol in the library.

Connections to a symbol is via the pins. It is important to correctly type each pin. This enables the Check Design Rules in the Special menu to operate correctly.

More than one set of pins may be added to a symbol. Each set is stored in a different part per package.

See also: Libraries, End Editing Library, Select Symbol to Edit, Store Symbol, Part in Package

Creating a new symbol library

Creating a new library is easy.

Simply add the name of your new library to the list of libraries in use. The new name will be accepted even though the library does not yet exist. Remember to place the library in a directory you have read/write access to.

For more details on adding libraries to the libraries in use list see [Selecting libraries](#).

The library will be created automatically when you first store a symbol into it.

See also: [Libraries](#), [Store Symbol](#)

Registration

To register, please print this page, fill it in and return it. If you like this program then please send £10 as well.

I am hoping to release new and better version of this program in the not too distant future, but this will only happen if enough people register.

+=====+

Registration for TinyCAD version 1.20

Name Mr/Mrs/Miss/Ms _____
Forname(s) _____
Address: _____

Postcode _____ Country _____

I use operating system _____ version _____
on a ☐ 386 ☐ 486 ☐ Pentium machine.

In the next version I'd like to see:

I find the following features useful:

I find the following features unhelpful:

The following parts of the documentation are unclear/missing:

I have found the following Bug (please describe it as fully as possible):

Please return this form to:

Matt Pyne, 1 Brook End, Eversholt, Milton Keynes, MK17 9DT, England.

+=====+

Menu Reference

Select which menu you wish to find out more about:

File Menu

Edit Menu

Library Menu

Special Menu

Options Menu

Menu Reference

Select which menu you wish to find out more about:

File Menu

New

Design Details

Open

Save

Save As

Import

Export

Print

Page Setup

Exit

Edit Menu

Library Menu

Special Menu

Options Menu

Menu Reference

Select which menu you wish to find out more about:

File Menu

Edit Menu

Undo

Redo

Repeat

Move Block

Drag Block

Duplicate Block

Delete Block

Rotate Block

Find

Tags

Set Tag

Library Menu

Special Menu

Options Menu

Menu Reference

Select which menu you wish to find out more about:

File Menu

Edit Menu

Library Menu

Get

Libraries

Re-read all Libraries

End Editing Library

Select Symbol to Edit

Store Symbol

Part in Package

Add Pin

Special Menu

Options Menu

Menu Reference

Select which menu you wish to find out more about:

File Menu

Edit Menu

Library Menu

Special Menu

Check Design Rules

Create Net List

Generate Symbol References

Create Parts List

Tidy Design

Options Menu

Menu Reference

Select which menu you wish to find out more about:

File Menu

Edit Menu

Library Menu

Special Menu

Options Menu

Font

Line Thickness

Snap to Grid

Show Grid

Fine Grid

Show Position

Repeat Directions

Re-Draw Window

New

This gets rid of the current design. All drawings in the current design are removed. If the current design has not been saved then you are asked to confirm before the design is lost.

Design Details

Design Details		
File		OK Cancel
Title		
Author		
Organisation		
Revision	1.0	
Document		
Number of Sheets	1 of 1	<input checked="" type="checkbox"/> Display Details

Each design has details of its full title, the author, *etc.* This option allows you to change these details. When the design is next saved, these details are saved with the design.

If the Display Details box is checked then these details will be displayed and printed in the bottom right hand corner of your design.

Open

This option opens a previously saved design for editing or printing. If there is already a design being edited it will be lost. If the current design has not been saved then you will be asked to confirm before continuing.

Save

This option saves the current design, its page set up and the design details are all saved in a single file. If the design has already a file name associated with it then it will be saved using this file name without prompting. If the design has never been saved then you will be prompted for a new file name before it is saved.

Save As

This option is similar to the Save menu option; however, you will always be prompted for a file name. Using this option you can save the current design using a new file name or place it into a different directory.

Import

Using this option you can place into the current design another previously saved or exported design.

When selected you will be prompted to enter the file name of a saved design. This design will be loaded and displayed. You can move the positioning of the imported design with the mouse. Place the design using the left hand mouse button or cancel the operation using the right hand mouse button.

Export

Using this option you can save just part of the current design. This part can be loaded as a design in its own right, or imported into another design.

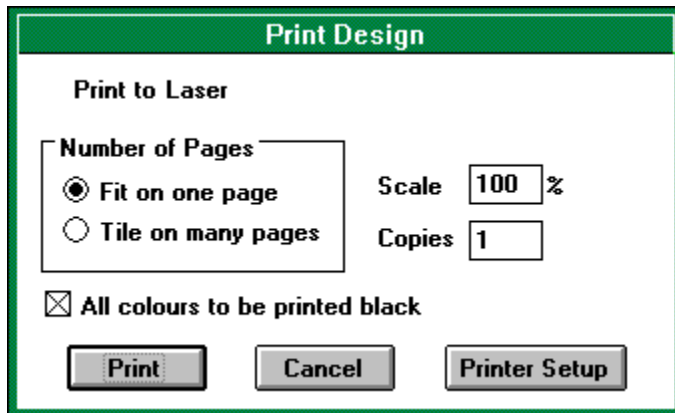
Once selected you must select the part of the design to export. Do this by placing a rectangle around the area to select. Click with the left hand mouse button to start placing, then move to the opposite corner and click with the left hand mouse button again. Once placed the symbols selected by the rectangle will be highlighted.

This can be cancelled by using the right hand mouse button.

Then a dialogue box will prompt you to enter the file name to save the export design.

Remember, this dialogue can be moved out of the way to see which parts of the design have been selected.

Print



This will print the current design to any installed Windows printer.
The following are several options that can be selected when printing:

- Scale

This selects how big the design will appear on paper. This option can be used, for example, to print designs that are bigger than a single page on one sheet, simply by selecting a scale smaller than 100%.

- Copies

This is the number of copies of the design that will be printed.

- Fit on one page

If this option is set, then only one page will be printed, regardless of the scaling. When this option is selected the scaling will automatically be adjusted (if necessary) to ensure that the whole design will fit on a single page. You may, however, change the scaling to any value you require.

- Tile on many pages

This option ensures the whole design will be printed. If the design with the scaling given is larger than a single page, then more than one page will be printed, each one covering a different part of the design. If the design will fit on a single page then only one page will be printed.

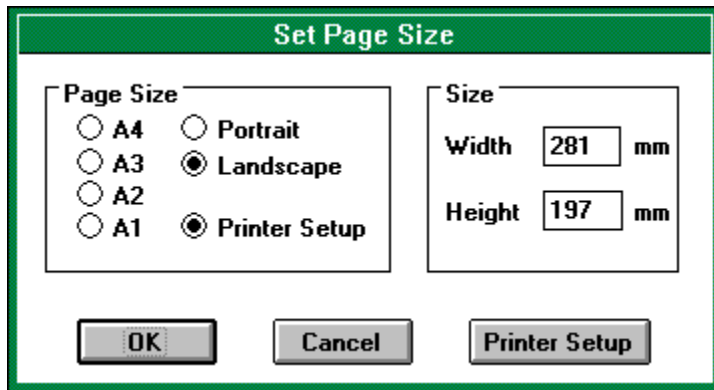
- All colours to be printed black

If this is checked then the printed design will be black and white only. If left un-selected on a black and white printer then the various colours will be printed as various shades of grey, which is not normally acceptable. This option should normally be checked when using a monochrome printer. When printing to a colour printer the option should be un-selected.

To select which printer to use click on the printer setup button. You will then be able to select printer, paper size etc. These settings will also be remembered for the next time you print a design.

Start printing by clicking on the print button, or cancel using the cancel button.

Page Setup



The image shows a 'Set Page Size' dialog box with a green title bar. It contains two main sections: 'Page Size' and 'Size'. The 'Page Size' section has radio buttons for A4, A3, A2, A1, Portrait, Landscape (selected), and Printer Setup (selected). The 'Size' section has input fields for Width (281 mm) and Height (197 mm). At the bottom are three buttons: OK, Cancel, and Printer Setup.

Set Page Size	
Page Size	Size
<input type="radio"/> A4	<input type="radio"/> Portrait
<input type="radio"/> A3	<input checked="" type="radio"/> Landscape
<input type="radio"/> A2	
<input type="radio"/> A1	<input checked="" type="radio"/> Printer Setup
Width <input type="text" value="281"/> mm	
Height <input type="text" value="197"/> mm	
OK Cancel Printer Setup	

This option allows you to select the total size of the design.

Some commonly used values are given. If you prefer you can enter your own size in millimetres of the page. Selecting Portrait will ensure the design is taller than it is wide; selecting Landscape will ensure the design is wider than it is tall.

The printer setup option is used with the printer setup button. Click on the printer setup button and select the printer and the type of paper you will use. Now when you return to the Set Page Size dialogue the width and height of the design will be set to match exactly the printable area of the printer.

The page size is saved with the current design when it is saved. The last page size entered here will be remembered for the next new design you start.

Exit

This option will exit the program and remove it from memory.

Undo

This option undoes the last action or sequence of actions performed on the design. For example, you can Undo the last drawing operation or undo the last deletion.

You may select this option repeatedly. This will cause the design to return to even more distant versions.

The opposite of this option is Redo.

Redo

This option is the opposite of the Undo option. If you select Undo then the last operation of the design will be undone. If you then change your mind about the Undo, selecting Redo will reverse the action of Undo.

Repeat

If the last object placed in the design was repeatable, this option creates another copy of it in a new location (depending on the repeat direction).

Only wires, line, dashed lines, buses and bus entries can be repeated.

They are repeated above, below, to the left of, or to the right of, the last placed object. This can be selected by the Up, Down, Left, Right option in the repeat directions menu.

Move Block

This option allows you to move parts of the design around. The connections by wires are not preserved when this option is used. If you wish to keep the connections use the drag block option.

Select the area you wish to move by drawing a rectangle around it. Start the rectangle by clicking with the left hand mouse button. Click again with the left hand mouse button again when the rectangle covers the area you wish to move.

The area selected will be highlighted. You can now move this area around the design. Place it by using the left hand mouse button.

You can cancel the move by clicking with the right hand mouse button.

Drag Block

This option allows you to move parts of the design, keeping the connections made by wires. All wires and buses that pass into the selected area to be moved will keep their ends outside the selected area fixed in place. All connections to symbols by wires will also be preserved.

This allows for objects to be moved around the design without affecting how they are connected.

Select the area you wish to drag by drawing a rectangle around it. Start the rectangle by clicking with the left hand mouse button. Click again with the left hand mouse button again when the rectangle covers the area you wish to drag.

The area selected will be highlighted. You can now drag this area around the design. Place it by using the left hand mouse button.

You can cancel the drag by clicking with the right hand mouse button.

Duplicate Block

This option allows you to make another copy of part of the design to be placed somewhere else in the design.

Select the area you wish to duplicate by drawing a rectangle around it. Start the rectangle by clicking with the left hand mouse button. Click again with the left hand mouse button again when the rectangle covers the area you wish to copy.

The area selected will be highlighted. When you move the mouse you will find that the original copy remains and you have a duplicate copy that can be placed anywhere in the design. Place this copy by using the left hand mouse button.

You can cancel the duplication by clicking with the right hand mouse button.

Delete Block

This option allow you to delete a whole area of a the design.

Select the area you wish to delete by drawing a rectangle around it. Start the rectangle by clicking with the left hand mouse button. Click again with the left hand mouse button again when the rectangle covers the area you wish to delete.

The area selected will be highlighted. You can delete this area by clicking on the delete button in the dialogue box.

Before the area has been deleted you can cancel by using the left hand mouse button.

Rotate Block

This option allows you to rotate and mirror (flip) a selected area of the design. This makes it very easy to correct the mistake of placing a component the wrong way round, as it and all its connections can be rotated.

Select the area you wish to rotate by drawing a rectangle around it. Start the rectangle by clicking with the left hand mouse button. Click again with the left hand mouse button again when the rectangle covers the area you wish to delete.

The area selected will be highlighted.

A dialogue box will now give you options to rotate the block clockwise or anti-clockwise, by clicking on the <<< and >>> buttons. You can also select the flip button which will mirror the block.

Once you have finished rotating the block click with either the left hand or right hand mouse button.

Find

This options can be used to find specific uses of text in the design. The user enters the text to be found. This text is then searched for in the design. Each occurrence of the string is has a marker placed on it and all the occurrences are placed in the design marker dialog.

The markers are removed from the design when the dialog box is close. Clicking on the text in the dialog box moves the associated marker to the centre of the design window.

Tags

This option helps you navigate large designs. Tags are names which mark specific points in the design. When a tag is selected the design window is changed to display the area that is tagged.

When this option is selected it views all the tags in the design, and enables the deletion or jumping to the tag location.

Set Tag

This option prompts you to name the selected area, and adds the tag to the design. When the tag is re-selected using the Tags option, this same area of the design is displayed in the design window.

By naming different parts of the design, a large design can still be navigated using these tags.

Get

The get options extracts symbols from the libraries listed in the Library setup.

After selecting this option, a dialogue box will prompt you for a symbol name. Enter a name and either click on the OK button or press enter. You can cancel by clicking on the cancel button.

If you are unsure of the name of the symbol you require you can use the Libraries option in the library menu. Click on the library name which contains the symbol you require and click on the Names button. This will display a list of all the names of symbols in the library you choose.

Symbols are extracted from the symbol libraries listed in the Library setup. For more information about creating new symbols and manipulating the symbol libraries see the relevant section.

Once the name has been entered each symbol library will be searched in turn for the symbol name. If it is found the symbol will be extracted and displayed.

It is possible to rotate the symbol and mirror it. Mirroring will only make a difference if the symbol is asymmetrical.

You can cancel placing the symbol either by clicking with the right hand mouse button, which will selected the edit item in the edit menu, or by selecting another tool.

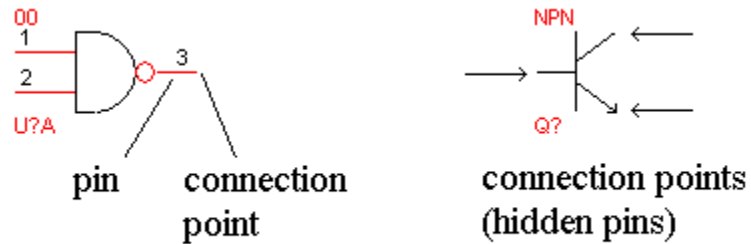
The symbol name is typically it's value such as 12K for a resistor, or 1N141 for a diode etc. However, sometimes two values are required to identify the symbol, typically when it is unclear what the symbol represents. In such circumstances a second field (labelled other) is available to contain additional information about the symbol.

The symbol reference is used to identify the symbol and should be unique. References can be automatically filled in by the generate symbol references in the Special tools menu. This tool replaces all symbol references with a ? in them with a unique reference. For this reason you typically do not have to alter the reference value when initially placing the symbol.

Some symbols represent a single element in a package. For example a single NAND gate in 7400. In this case you can select which of the parts in the package the symbol represents. The power connections will also be made automatically for you, and are not shown on the design. In order for this to work properly you must use the same names as used by the symbols for the power supply. For the TTL 74 library the power supply are named VCC and GND. Make sure you type them in upper case.

To select which part per package you actually want, enter a letter (A, B, C etc.) in the box beneath the symbol reference box, the pin numbers on the symbol will change accordingly. The part per package is also filled in by the generate symbol references, and so does not normally need to be entered.

Once you have filled in the edit window, place the symbol using the left hand mouse button.



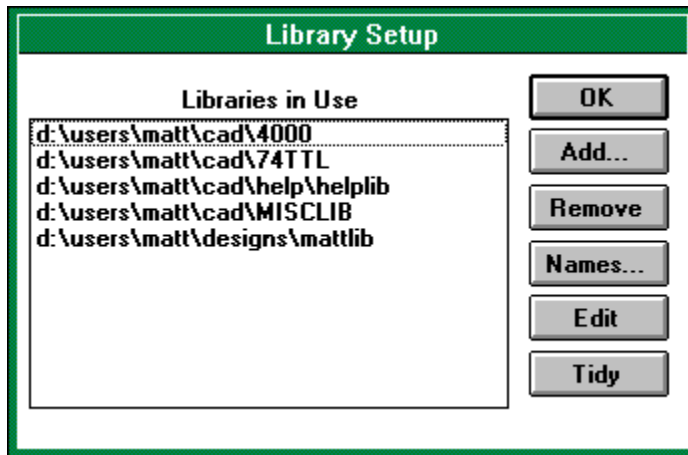
Connections to the symbol should be via the pins on the symbol. All connections should be made at the end of the pins, otherwise it will not be considered connected by the Special tools. Sometimes the pins are hidden. In this case the connection point will be obvious by the design of the symbol. For example, the npn transistor has no visible pins, connection to this symbol is via the two diagonal lines of the collector and emitter and the straight line of the base.

You can edit symbols to change their names, reference and orientation. Do this by selecting the edit item in the edit menu, then click with the left hand mouse button on any part of the symbol (except the text). The edit window will appear and you can alter the symbol as necessary. When you have finished either click with the left hand mouse button on a new item to edit, or click with the right hand mouse button.

Symbols can also be moved or deleted.

Libraries

This option brings up the dialogue box which allows the setting up and editing of libraries.



The list in the dialogue box is a list of libraries searched when the Get option (in the Library menu) is used. You may add or remove these libraries from this list using the buttons at the side of the list.

The Add button in the dialogue allows a library not currently being searched to entered into the search list. When this option is selected a file selection dialogue appears. Select the index file (those files with .idx extensions), which belongs to the library you wish to use. The library is then added to the list box.

The Remove button removes a library from the search list. It does not delete it! Select the library you wish to remove by clicking on it in the list box, then click on the remove button.

The Names button causes of a list of all the names of all the symbols in the library selected. Select a library to display the names of in the list by clicking on it, then click on this button. In this new dialogue the symbol names can be printed. Symbols can be deleted from the library, or symbols can be renamed.

Note: Once a symbol has been deleted from a library it cannot be recovered! Use this option with care!

The Edit button allows a library to have new symbols added to it. Select a library to edit by clicking on it in the list, then click on the Edit button.

Once this option has been selected and a library is being edited, some of the other options in the Library menu can then be used. New library symbols are drawn as normal designs in the design window. A library is edited until a new library is selected to be edited or End edit is selected in the Library menu.

During editing other users can still use the library you are editing, however, they will not be able to access the new symbols. After editing a library has finished, all users of the library will have to select re-read all libraries (in the Library menu) before they can access all the symbols in the

library.

The Tidy button causes a library to be tidied up. Select a library to tidy by clicking on it in the list, then click on the Tidy button. When the library has been tidied a message box will appear informing you of this.

Libraries will need tidying after they have been extensively edited. Tidying the library will make it smaller by removing the unwanted old (now deleted) symbols in the library.

Re-read all Libraries

This option causes all the libraries currently in use to be re-read, and any changes displayed in the current design.

This option can be used if another user changes a library, at the same time you are using this program. The new changes will not be available until you re-read the libraries, or re-start the application.

In the event of another user tidying a library, you must use this option before any new symbol can be extracted from that library.

End Editing Library

This option can only be selected when you are currently editing a library.
It closes the library, and clears the current design.

Use this option when you have finished editing a library.

Select Symbol to Edit

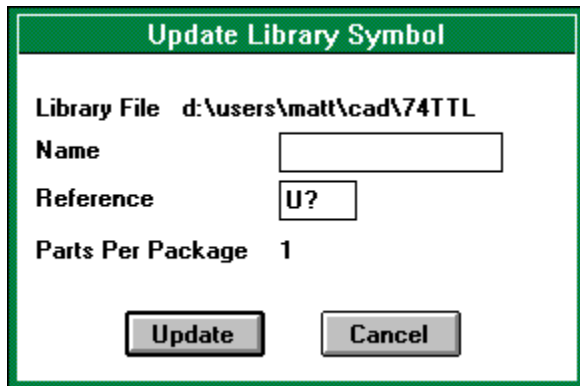
This option can only be used when you are editing a library. It is similar to Get in the Library menu. It asks you to enter a symbol name. This symbol will be extracted from the library ready for editing.

Place the symbol somewhere in the current design by using the left hand mouse button. You can cancel this operation by clicking with the right hand mouse button.

Once the symbol has been placed it can be changed, as each component of the symbol can be edited separately.

Store Symbol

This option can only be used when you are editing a library.



The image shows a dialog box titled "Update Library Symbol" with a green header bar. Inside the dialog, there are four labeled fields: "Library File" with the value "d:\users\matt\cad\74TTL", "Name" with an empty text box, "Reference" with the value "U?" in a small text box, and "Parts Per Package" with the value "1". At the bottom of the dialog are two buttons: "Update" and "Cancel".

It causes the current design to be added to the library being edited.

When you select this option a dialogue box will appear prompting you for the symbol name in the library. If you use a name already in use then the new symbol will overwrite the old.

You must also enter the default reference for the symbol.. This is the text that appears in the reference field of the symbol when it is first extracted from the library using the Get command. Remember that the reference should normally be a single letter followed by a ?. For example: U?

Click the OK button to store the symbol, or the Cancel button to exit without changing the library.

Part in Package

This option can only be used when you are editing a library.

When a symbol has more than one part per package, this option allows you to edit each part individually.

Each part in the package must have the same symbol outline, but with different pins. Therefore this option only effects the pins in the symbol.

When you select a new part per package, which has not yet been defined, you will be given the option to copy over the pins in the current part into the new part. Select Yes, if you wish to have the pins in the same layout for each part in the package. This is highly recommended. Once the pins have been copied, you can edit their pin numbers using the Edit Item option in the Edit menu.

Add Pin

This option can only be selected when you are editing a library.

Pins are used to show where the connections to each symbol are.

Pins of various shapes are provided, however, these shapes are for cosmetic purposes only. They do not effect how each pin is considered to be connected.

There are various types of pin. These type govern how the electrical rules checker operates. The electrical rules checker checks which pins of what type are connected together and determines whether or not this will produce a correct circuit.

All pins must have a pin number. If the device is not one that has pins numbers (such a capacitor), then what the numbers are is arbitrary - but they must all be different. Pin numbers can also include letters. This is so the pins of a Pin Grid Array device can be correctly labelled. Pins can optionally have a name. This is not necessary however. The pin number and name can be shown or hidden. To hide the text click on the check box next to the text in the dialogue box.

Pins of type power are special. Although they are shown when editing a symbol, when the symbol is placed in a design these pins are hidden. Once the symbol is placed in a design pins are automatically connected to the power of the same value as their name. Therefore these pins must have a name. This can be used in conjunction with the parts per package option to allow the placing of, for example, logic gates, without need to show the power connection explicitly. A power pin cannot be connected to normally, all connections to this pin will be done automatically.

A pin of type hidden will be shown when editing a symbol, as with power pins, and hidden when the symbol is placed into a design. However, the normal connections are expected to be made to this pin, even though it is unseen. The symbol design must indicate where these pins are to allow easy connection.

Each pin is associated with a part per package. A single symbol may have more than one part per package. For example a 7400, consists of 4 NAND gates. Each part has different pin numbers on each pin. To select which part per package the pin you are placing belongs to use the Part in Package option in the Library menu.

To place a pin click with the left hand mouse button in the design window. When a pin has been placed, the pin number in the dialogue box will automatically be advanced for you.

Placing can be cancelled by clicking with the right hand mouse button.

Once a pin is placed the pin number is either incremented or decremented, automatically for you. The Pin Increment/Pin Decrement options in the repeat directions menu (in the Edit menu) select which way the pin number is changed.

Also if the pin name has a number at then end of it then it too is also incremented or decremented. The Name Increment/Name Decrement options in the repeat directions menu (in

the Edit menu) select which way the pin name is changed.

Pins can be edited. To edit them select the Edit Item option in the Edit menu, then click on the end of the pin (the same end as you placed, and would connect a wire to).

Pins can also be moved or deleted.

Check Design Rules

This option will cause the current design to be checked against a list of rules it must obey. The rules test for gross errors in the design. For example, they will tell you if two outputs are connected together. They do not tell you if the design will work or not. However, if the design has errors in it picked up by this tool, then it is properly incorrectly drawn.

Once selected a dialogue box will appear. Each rule that is checked can be turned on or off before the test is done in this dialogue box.

Once the OK is selected the design is checked. Any errors are circled by a red ring. A list of errors is displayed at the side of the design. Clicking on any item in the list will cause that error to be moved to the centre of the design window.

Selecting Edit Item in the Edit menu, then clicking on an error will cause it to be highlighted and also cause the error name in the error list to be highlighted.

If the Done button in the list is selected all the errors will be removed from the design.

If no errors are found then a list will appear stating so. This list can be removed by selecting the Done button.

Error circles can edited, moved or deleted. Error circles will not be saved with the design.

Create Net List

A net list is a file which contains a list of all the connections made in a circuit diagram. All objects which are connected together are in a single list, called a net. For symbols each objects pin is considered a different object. Each net is given a different name.

Net lists are useful for programs such a PCB layout tools which can check you layout to see if it matches the layout of the circuit diagram, or even suggest a PCB layout from the net list. These more advanced features will be better supported by this program in future releases.

Currently only one net list format is supported. A simple to follow text file is produced. In future I hope to support more output formats. If you have a suggestion I would be glad to hear it, please include as much detail as possible.

Generate Symbol References

This option changes the symbol references in your design. It relieves you of the task of ensuring each symbol has its own unique reference.

Once this option has been selected a dialogue box will allow several options to be changed. You can either add or remove the current references. Removing references can be useful if you wish to integrate this design into another.

You can apply the changes to all references, that is the entire design will have potentially all of its references changed. Use this option if you do not yet have built the design, or have not issued any copies of the design to others.

You can apply the changes to only un-numbered references. This will ensure only new symbols with references with a ? in them will be changed. Use this option if you are modifying an existing design, and wish to leave existing components with their original references.

You can apply the changes to only references matching a given reference. This will apply to all references matching the one entered, even if the symbol has already been assigned a reference. Use this option, for example, to renumber all the capacitors without renumbering any other symbol.

If you wish you can allow this tool to determine what the correct symbol reference for the symbols is. Alternatively you can enter your own.

When you select the OK button the options will be applied to the design. Each symbol specified will be given a new reference. If you select remove references then each symbol will have its references changed back to one with a ? instead of a value.

You may select Cancel to not apply the reference generator.

Create Parts List

This option creates a list of all the parts used in the design. This list is sorted by symbol reference, and all parts of the same type are listed together.

Essentially this is a list of parts that need to be purchased to make the design.

The parts list is store in a simple text file, which can be edited and printed using notepad.

Tidy Design

This option improves the way the design is stored without effecting the way it looks.

In this release it does this by removing unseen object from the design.

This includes:

- Wires, buses, arcs and lines with zero length.
- Labels and text with no text in them.
- Rectangles and ellipses with no area.

This option removes errors than can creep in during editing which are difficult to remove yourself because they are unseen.

In future this option will cover further operations to improve the way the design is stored. You should use this option from time to time to tidy up the design.

Font

The user may select the size and style of font for the Labels, Text and Bus names tools.

Selecting this option will enable the changing of the font. If the font is changed before a tool is selected, then this new font will become the default font for all newly placed objects.

Selecting this option with a tool selected, will change the font until a new tool is selected.

When a new tool is selected the default font will be re-selected and used.

If this option is selected during editing an item, then the font for that particular object will be changed.

Line Thickness

The Line Thickness of Lines, and the lines used in Arc Segments, Ellipses, and Rectangles can be changed using this option.

Snap to Grid

This option should under normal conditions be selected.

This option makes any mouse position snap to the nearest point on a grid. This allows the easy alignment of objects. It also ensures when you attempt to connect a wire to a symbol that the connection is made correctly. For this reason snap to grid should always be on.

If the snap to grid feature is turned off then when you attempt to connect a wire to a symbol it is very difficult to ensure both the end of the wire and symbols connection point are on the same point. With snap to grid this is made easy. If they are not on the same point, not only does it look untidy when printed but it will also be considered un-connected by the special tools.

Selecting this option when snap to grid is already on will disable it. This can be used for when drawing annotations which require off-grid placements.

Show Grid

This causes the grid to be displayed.

If the grid is too fine to show at the current zoom then it will not be displayed. To see the grid zoom in.

If the fine grid is enabled then the points which lie on the normal grid as well are shown as crosses.

Fine Grid

This causes a grid with more points to be used.

It is intended that this finer grid be used for annotation when the annotation is required to lie off the normal grid.

Select this option again to return to a normal grid.

Show Position

This option will cause a dialogue box to be displayed with the current co-ordinates of the mouse pointer in the design. To remove the dialogue box select this option again.

Repeat Directions

This option is a sub-menu with options for the repeat command, and options for use when placing labels, text and placing pins.

The Up, Down, Left, Right options specify where an object is placed when it is repeated.

The Name Increment/Name Decrement options specify how label names, text or pin names are altered after they are placed.

The Pin Increment/Pin Decrement options specify how the pin numbers are altered after placing a pin. Note that you can only place pins when editing a library.

Re-Draw Window

This causes the whole windows to be re-drawn.

It is possible after many edits of the design that it becomes slightly distorted by stray pixels. This option causes these errors to be removed. (Hopefully you will never need to use this option!)

Keypresses Reference

Key	Action	Menu
<i>Ctrl</i> +n	<u>New</u>	File
<i>Ctrl</i> +o	<u>Open</u>	File
<i>Ctrl</i> +s	<u>Save</u>	File
i	<u>Import</u>	File
e	<u>Export</u>	File
<i>Ctrl</i> +p	<u>Print</u>	File
d	<u>Drag Block</u>	Edit
m	<u>Move Block</u>	Edit
o	<u>Rotate Block</u>	Edit
r	<u>Repeat</u>	Edit
u	<u>Duplicate Block</u>	Edit
x	<u>Delete Block</u>	Edit
c	Centre	
+	Zoom In	
-	Zoom Out	
s	<u>Re-Draw Window</u>	Options
<i>F1</i>	<u>Bus</u>	Toolbar
<i>F2</i>	<u>Junction</u>	Toolbar
<i>F3</i>	<u>Label</u>	Toolbar
<i>F4</i>	<u>No Connect</u>	Toolbar
<i>F5</i>	<u>Power</u>	Toolbar
<i>F6</i>	<u>Wire</u>	Toolbar
<i>F7</i>	<u>Arc segment</u>	Toolbar
<i>F8</i>	<u>Dashed Line</u>	Toolbar
<i>F9</i>	<u>Ellipse</u>	Toolbar
<i>F10</i>	<u>Line</u>	Toolbar
<i>F11</i>	<u>Rectangle</u>	Toolbar
<i>F12</i>	<u>Text</u>	Toolbar
<i>Insert</i>	<u>Edit Item</u>	Toolbar
<i>Delete</i>	<u>Delete Item</u>	Toolbar
/	<u>Bus Entry(/)</u>	Toolbar
\	<u>Bus Entry(\)</u>	Toolbar
g	<u>Get</u>	Library

Toolbar Reference

Click on the tool you wish for help on:



Label
No-Connect
Bus Entry
Text
Arc Segment
Zoom



Wire
Power
Bus Entry
Dashed Line
Ellipse
Delete



Junction
Bus Name
Bus
Line
Rectangle
Edit

Arc segment

The only arcs which can be drawn are the arcs which represent one quarter of an ellipse. Arcs are for annotating your designs only, they are ignored by all the special tools.

To draw an arc select the starting point with the left hand mouse button. Then move to the ending point and click again with the left hand mouse button. If the arc bows the wrong way, then draw the arc in the other direction. That is, click with the left hand mouse button in the place where you intended to end it, then move to your original starting point and click again. To cancel drawing an arc click with the right hand mouse button, and you may start a new arc from a different point. Clicking with the right hand mouse button again will select the Edit Item option in the edit menu.

You may change the width of the line the arc is drawn with by selecting the Line Thickness option in the Options menu.

Arcs cannot be edited, but they can be deleted or moved.

Bus

Click with the left hand mouse button in the place you wish to start the line. Move to where you wish the line to end and click with the left hand button again. A bus segment will be placed and a new bus segment is now started from this point.

To stop drawing click with the right hand mouse button, and you may start a new bus from a different point. Clicking with the right hand mouse button again will select the Edit Item option in the edit menu.

Normally the bus is locked to 90 degree positions. In this mode two line segments are displayed at once. However, only one segment is placed at a time when you click with the left hand mouse button. You must click once more to place both the bus segments.

You may also lock to 45 degree angles only, or have no locking at all. This can be selected from the edit window. When these options are used, only one bus segment at a time is displayed.

If you find when you try and place two bus segments in rapid succession and find that only one is placed, then the cause is properly due to the double click speed of the mouse being setup so that it is too slow. Go to the Control Panel and alter the double click speed faster. (See the Window's Manuals for more details).

Buses cannot be edited, but they can be moved, dragged or deleted.
Buses can be repeated.

Bus Entry

Bus entries are used to show the connection of a wire to a bus. There are two types of bus entry, allowing for connection into the bus from any possible direction.

To place bus entries, select this option in the menu, then move the bus entry to the point you wish to place it. Place it by clicking with the left hand mouse button.

When you have finished placing, either select a new tool or click with the right hand mouse button. This will select the Edit Item in the Edit menu for you.

Bus Entries cannot be edited, but they can be moved or deleted.

Bus Entries can be repeated.

Bus Name

A Bus Name placed across a Bus to indicate the nature of the Bus. This could be the number of conductors in the bus or the name of the Bus.

It is often required to have bars over the letters in a Bus Name. This can be done by placing the ` character before each letter that needs a bar over it. If a whole word needs to have a bar placed over it then each letter in that word must have a ` before it.

Type the name of the bus in the dialogue box. As you enter text a rectangle will appear next to the mouse, indicating the size and position of the text.

Move this rectangle with the mouse to where you wish to place it and click with the left hand button.

You can cancel entering text by clicking with the right hand mouse button.

Bus Names can be edited once placed. To do so select Edit Item on the Toolbar. Then click with the left hand mouse button on the text to be edited. A window will appear with the original text in it. You can now alter it as necessary. When finished either click with the left hand mouse button on something else to edit, or click with the right hand mouse button.

Bus Names can also be moved and deleted.

Dashed Line

Dashed lines are provided to annotate your diagrams only. For the most part, they are ignored by all the special tools.

Click with the left hand mouse button in the place you wish to start the line. Move to where you wish the line to end and click with the left hand button again. A line segment will be placed and a new line segment is now started from this point.

To stop drawing click with the right hand mouse button, and you may start a new dashed line from a different point. Clicking with the right hand mouse button again will select the Edit Item option in the edit menu.

Normally the line is locked to 90 degree positions. In this mode two line segments are displayed at once. However, only one segment is placed at a time when you click with the left hand mouse button. You must click once more to place both the line segments. You may also lock to 45 degree angles only, or have no locking at all. This can be selected from the edit window. When these options are used, only one line segment at a time is displayed.

If you find when you try and place two line segments in rapid succession and find that only one is placed, then the cause is properly due to the double click speed of the mouse being setup so that it is too slow. Go to the Control Panel and alter the double click speed faster. (See the Window's Manuals for more details).

You cannot change the width of a dashed line.

Dashed lines cannot be edited, but they can be moved or deleted.
Dashed lines can be repeated.

Delete Item

This option allow you to delete objects in the design.

Once this has been selected then clicking with the left hand mouse button on any object in the design window will highlight it. To delete the object move to the delete dialogue box and click on the delete button.

If more than one object is beneath the mouse pointer then clicking with the left hand mouse button in the same place again will cause a different object to be selected. So to select any object keep clicking until the object you wish to delete is highlighted.

Edit Item

This option enables editing of objects already placed in the design. Not all objects can be edited.

Once this option has been selected then clicking with the left hand mouse button on an editable object in the design will bring up the associated dialogue box. You may change the object using the dialogue box. The object being edited will be highlighted.

For example, if you click on a text object then a dialogue box will appear with the text in it. You may then change the text in the dialogue box.

End editing an object by clicking with the right hand mouse button in the design window, or by selecting a new object to edit using the left hand mouse button.

Edit Item will not allow you to move objects (except a symbols text fields), use the move block option to move an object.

If there is more than one editable object under the mouse pointer, then clicking again with the left hand mouse button in the same place will cause a different object to be selected. Keep clicking with the left hand mouse button until the object you wish to edit is selected.

Ellipse

Ellipses are only used to annotate designs. They are ignored by all the Special tools.

The only ellipses that can be drawn are those which can be enclosed by a rectangle with its edges parallel to the edges of the design.

To draw an ellipse you must start by moving to one corner of the rectangle that will enclose the ellipse (this rectangle is not actually displayed). Click with the left hand mouse button. Now as you move the mouse the ellipse will be shown. Once the ellipse is in the correct position click again with the left hand mouse button.

To cancel drawing an ellipse, click with the right hand mouse button, and you may start a new ellipse from a different point. Clicking with the right hand mouse button again will select the Edit Item option in the edit menu.

You may change the width of the line the ellipse is drawn with by selecting the Line Thickness option in the Options menu.

Ellipses cannot be edited, but they can be moved or deleted.

Junction

Junctions indicate when two wires meet that they are electrically joined. This information is used by the special tools to generate net lists and check the electrical rules. When two wires meet or cross it is assumed they are not joined unless a junction is placed at the crossing point.

To place a junction select this option, then move the junction to the location in the design where you wish to place it and then click with the left hand mouse button. When you have finished placing, either select a new tool or click with the right hand mouse button. This will select the Edit Item in the Edit menu for you.

Junctions cannot be edited, but they can be moved or deleted.

Label

Labels indicate a connection to the wire which runs beneath them. Any two wires with the same label name above them are considered to be connected.

This can be useful when two parts of a circuit need to be connected but are a long way apart on the diagram, or one point needs to be connected to a large number of others.

It is often required to have bars over the letters in the label. This can be done by placing the ` character before each letter that needs a bar over it. If a whole word needs to have a bar placed over it then each letter in that word must have a ` before it.

Type the text you wish to add in the dialogue box. As you enter text a rectangle will appear next to the mouse, indicating the size and position of the text.

Move this rectangle with the mouse to where you wish to place it and click with the left hand button.

After placing a label, if the text has a number on the end of it, it is automatically incremented or decremented depending on the Name Increment or Name Decrement option selected in the Repeat Directions menu (in the Edit menu).

You can cancel entering text by clicking with the right hand mouse button.

Labels can be edited once placed. To do so select Edit Item on the Toolbar. Then click with the left hand mouse button on the text to be edited. A window will appear with the original text in it. You can now alter it as necessary. When finished either click with the left hand mouse button on something else to edit, or click with the right hand mouse button.

Labels can also be moved and deleted.

Line

Lines are provided to annotate your diagrams only. For the most part, they are ignored by all the special tools.

Click with the left hand mouse button in the place you wish to start the line. Move to where you wish the line to end and click with the left hand button again. A line segment will be placed and a new line segment is now started from this point.

To stop drawing click with the right hand mouse button, and you may start a new line from a different point. Clicking with the right hand mouse button again will select the Edit Item option in the edit menu.

Normally the line is locked to 90 degree positions. In this mode two line segments are displayed at once. However, only one segment is placed at a time when you click with the left hand mouse button. You must click once more to place both the line segments.

You may also lock to 45 degree angles only, or have no locking at all. This can be selected from the edit window. When these options are used, only one line segment at a time is displayed.

If you find when you try and place two line segments in rapid succession and find that only one is placed, then the cause is properly due to the double click speed of the mouse being setup so that it is too slow. Go to the Control Panel and alter the double click speed faster. (See the Window's Manuals for more details).

You may change the width of the line with by selecting the Line Thickness option in the Options menu.

Lines cannot be edited, but they can be moved or deleted.

Lines can be repeated.

No Connect

No connects indicate that the symbol, wire or power item is not connected to anything else, and should not be connected to anything else. The electrical rules checker will indicate an error if an input is unconnected unless it has a no connect joined to it. Place no connects on any unused input or output to avoid this error and indicate that it is intentionally left unconnected.

To place a no connect select this option, then move the cross to the location in the design you where wish to place it and then click with the left hand mouse button. When you have finished placing, either select a new tool or click with the right hand mouse button. This will select the Edit Item in the Edit menu for you.

No connects cannot be edited, but they can be moved or deleted.

Power

Power objects are used to show where power is connected to the design. All power objects should have a value, which is the value of the power it provides (such as 5V, GND, 0V etc.). All power objects with the same value are considered connected to one another; even if they have different shapes.

You should connect wires to the power items at the end of their pins, otherwise they will not be considered to be connected.

Certain symbols are automatically connected to power without the connection being shown (for example the 7400, although no power pins are shown, it is automatically connected to VCC and GND). When using these symbols, you should make sure you use the same power supply names as the symbols otherwise the symbol will not be correctly connected to the power supply.

To place power items in to your designs select power from the Toolbar. Then in the dialogue box select the orientation of the power item, its shape and its name. Place the power item by clicking with the left hand mouse button.

A range of shapes is provided, and you may use any name. Bars may be added over letters in names in the same manner bars can be added to text and labels, that is by placing ` before each letter which requires a bar over it.

Once you have finished placing power items click with the right hand mouse button or select a new tool.

Power items can be edited. To do so select Edit Item in the Edit menu. Click with the left hand mouse button on the end of the power item's pin. You can now change its name, orientation and shape. When finished either click with the left hand mouse button on something else to edit, or click with the right hand mouse button.

Power items can also be moved and deleted.

Rectangle

Rectangles are only used to annotate designs. They are ignored by all the Special tools.

To draw rectangles, select the tool on the Toolbar. Then go to the position for one of the corners of the rectangle. Click with the left hand mouse button. Now as you move the mouse the rectangle will be shown. Once the Rectangle is in the correct position click again with the left hand mouse button.

To cancel drawing a rectangle, click with the right hand mouse button, and you may start a new rectangle from a different point. Clicking with the right hand mouse button again will select the Edit Item option in the edit menu.

You may change the width of the line the rectangle is drawn with by selecting the Line Thickness option in the Options menu.

Rectangles cannot be edited, but they can be moved or deleted.

Text

Text is used only to annotate designs, it is ignored by the special tools.

It is often required to have bars over the letters in the text. This can be done by placing the ` character before each letter that needs a bar over it. If a whole word needs to have a bar placed over it then each letter in that word must have a ` before it.

Type the text you wish to add in the dialogue box. As you enter text a rectangle will appear next to the mouse, indicating the size and position of the text.

Move this rectangle with the mouse to where you wish to place it and click with the left hand button.

After placing text, if the text has a number on the end of it, it is automatically incremented or decremented depending on the Name Increment or Name Decrement option selected in the Repeat Directions menu (in the Edit menu).

You can cancel entering text by clicking with the right hand mouse button.

Labels can be edited once placed. To do so select Edit Item on the Toolbar. Then click with the left hand mouse button on the text to be edited. A window will appear with the original text in it. You can now alter it as necessary. When finished either click with the left hand mouse button on something else to edit, or click with the right hand mouse button.

Text can also be moved and deleted.

Wire

Wires are used to indicated connections on the circuit diagram. If you wish to use features such as the electrical rules checker or net list generation then you must use wires for this purpose. If you use lines instead of wires to join up points on a diagram then these tools will not work!

Click with the left hand mouse button in the place you wish to start the wire. Move to where you wish the wire to end and click with the left hand button again. A wire segment will be placed and a new wire segment is now started from this point.

To stop drawing click with the right hand mouse button, and you may start a new wire from a different point. Clicking with the right hand mouse button again will select the Edit Item option in the edit menu.

Normally the wire is locked to 90 degree positions. In this mode two line segments are displayed at once. However, only one segment is placed at a time when you click with the left hand mouse button. You must click once more to place both the bus segments.

You may also lock to 45 degree angles only, or have no locking at all. This can be selected from the edit window. When these options are used, only one wire segment at a time is displayed.

If you find when you try and place two wire segments in rapid succession and find that only one is placed, then the cause is properly due to the double click speed of the mouse being setup so that it is too slow. Go to the Control Panel and alter the double click speed faster. (See the Window's Manuals for more details).

Wires cannot be edited, but they can be moved, dragged or deleted.
Wires can be repeated.

Zoom

The zoom tool enables you to easily enlarge the view of the design. Once selected you may enlarge the view by clicking with the left hand mouse button, and reduce the view by clicking with the right hand mouse button.

The position of the mouse pointer, when you zoom in, is moved to the centre of the window.

