

WinSpool



Copyright 1994 JCI

What WinSpool Does

Advantages of Using WinSpool

Registration

Program Requirements

3 Way Operation

File Watch Method (default)

Drag and Drop Method

Command Line Method

How To

How To / Examples / Troubleshooting

Special Introductory Offer!

WinSpool is a copyrighted trade mark of JCI.

All other programs and products mentioned here are copyrighted and/or trademarks of their respective authors or manufacturers.

Copyright 1994 JCI

WinSpool is Copyright 1993,1994 by JCI. All rights reserved.

No modifications may be made to this program in any way without the express written consent of JCI.

Programmed by Brent Jackson



JCI
6 Harbor Way 132
Santa Barbara, CA 93109

CIS 72607,527

Distribution

Distribution

This program may be freely distributed by any means, provided it is distributed as a whole with all files included and no changes are made to its contents.

Shareware distributors should contact JCI for a complete master distribution disk. BBS versions do not have an installation program or commonly available support files such as VBRUN300.DLL, so that file sizes can be kept small. The master distribution disks have these features which make installation much easier, especially for beginners.

Copyright 1994 JCI

What WinSpool Does

Advantages

In simplest terms, WinSpool is a utility that sends data files directly to your printer under Windows.

The Problem

Although Windows and many DOS programs allow you to print to a file, Windows doesn't give you any way to send that file to the printer later on. Instead you usually have to copy the file to the printer port using DOS. This can lead to conflicts since both DOS and Windows compete for use of the printer. WinSpool fills this gap by allowing you to send print files in a fully compatible way, working in concert with Print Manager to avoid any conflicts.

WinSpool and Print Manager

Flexible

You can use any combination of three methods to send your files: Drag and Drop, Command Line, or File Watch.

File Watch Method (default)

Drag & Drop Method

Command Line Method

Intelligent

WinSpool inspects the contents of the file to determine which printer should receive it. If WinSpool can't figure it out, it will ask you which printer to use and then remember for next time.

Associating Data and Printers

Compatible

It can use any local or network printer available under Windows, local or network. Even if you don't have a Windows driver for your printer, you can WinSpool to it.

How to use an Unsupported Printer

Enjoy using WinSpool! Please register so that we can provide continued support and enhancement. We welcome any comments or suggestions you might have on making WinSpool even better.

Advantages of Using WinSpool

AutoCAD

MicroStation

DOS Programs

Networked Plotters and Serial Printers

Printers without Windows Device Drivers

Windows Programs

OS/2

Windows NT

- n Use any version of AutoCAD and print with Windows.
- n WinSpool allows AutoCAD to generate plot files faster!
- n WinSpool lets you use AutoCAD's own drivers, which are often more efficient and more accurate, and faster than Windows drivers.
- n WinSpool eliminates printer sharing conflicts, serial port problems, and network plotting woes.
- n Once configured, WinSpool requires no user input. Everything is automatic. You never have to leave AutoCAD.
- n WinSpool intelligently determines which printer the plot is for.
- n WinSpool plots in the background while you continue to work. You don't have to wait for the plotter to finish before starting your next plot!
- n WinSpool allows an unlimited number of users to plot concurrently to an unlimited number of printers.

- n Use WinSpool to send your plots automatically.
- n WinSpool allows you to use any number of printers/plotters, not just those local on COM1.
- n WinSpool recognizes the file contents and sends it to the appropriate printer/plotter.
- n Allows sharing of networked plotters.

- n WinSpool eliminates DOS/Windows printer sharing conflicts and network printing woes.
- n WinSpool lets DOS programs and Windows programs share the printers in a way that is compatible to both.
- n WinSpool intelligently sends the printer data to correct printer by identifying the print file contents.
- n WinSpool allows an unlimited number of users to print to an unlimited number of printers --at the same time.
- n WinSpool plots in the background while you continue to work.
- n Use the printer drivers that came with your DOS program. You don't need a Windows driver that supports your printer!
- n You don't have to run Windows on your computer to use WinSpool, just the one computer which does the spooling. Work in DOS all you like!

- n WinSpool allows you to share any printer or plotter on on your network, even a plotter connected through a serial port or special interface card.
- n WinSpool only needs to run on one computer in your network. Reduce the work load on your other computers.
- n WinSpool supports DOS clients flawlessly, only the one computer running WinSpool needs to run Windows.
- n OK, run multiple copies of WinSpool on multiple computers if you like! It works just fine and takes so little memory and CPU time you'll never notice.

- n WinSpool bypasses the Windows printer drivers. You don't need a Windows driver for your printer!
- n WinSpool lets you use the printer drivers that came with your DOS program. DOS drivers are often more efficient and have extended features that Windows does not.
- n Use WinSpool to send printer control codes.

- n WinSpool has been shown to increase printing speed for some Windows applications. [To be honest, we're not quite sure why this is so, but some Windows programs seem to be able to print drastically faster to a file which is then handled by WinSpool, than directly to the printer or Print Manager. We suggest you try this with your slowest printing application to see how it performs for you].
- n Send text files to your printer with lightning speed!
- n Print from DOS programs without fear of a printer conflict.
- n Print to a file if you're on the road! Then just drag and drop the print file on WinSpool.
- n Printing Services: Just give those client print files to WinSpool and let it sort them all out.
- n Works on Windows 3.1, WFW, Win32, WinNT and OS/2.

- n WinSpool works fine on OS/2.
- n WinSpool has been shown to increase printing speed for some OS/2 and Windows applications. [To be honest, we're not quite sure why this is so, but some programs seem to be able to print dramatically faster to a file which is then handled by WinSpool, than directly to the printer or Print Manager. We suggest you try this with your slowest printing application to see how it performs for you].
- n Want to share a plotter under OS/2? No problem with WinSpool.

- n Works on Windows 3.1, WFW, Win32, WinNT and OS/2.
- n Plotters won't be supported on NT until the next release!?! Let WinSpool take care of that!
- n WinSpool allows you to share plotters and serial printers on any combination of NT, WFW, Win3.1, and DOS workstations. If you can connect the workstation, WinSpool can support it.

WinSpool and Print Manager

WinSpool in Concert with Print Manager

To avoid conflicts, and to avoid "reinventing the wheel", WinSpool works cooperatively with Print Manager.

WinSpool actually sends its output to Print Manager, using Print Manager's spooling and network printing abilities. If you watch Print Manager's status window when WinSpool sends a file, you will see a new print job named WinSpool and the name of the file being sent.

Print Manager considers a WinSpool print job to be just like one from any other program. You can use Print Manager to pause, kill or restart any WinSpool Job.

WinSpool vs. Print Manager

I can already drag and drop a file to Print Manager, so why do I need WinSpool?

Print Manager allows you to drag and drop any document file to it as a method of printing. Print Manager starts the program associated with the document file and directs the program to print it. This is very handy of course, but it is important to note that the document is not sent directly to the printer. The document is interpreted by the program used to send it. Print Manager won't just send the data file directly to the printer.

You need WinSpool for when you want to send a file directly to the printer.

Perhaps you are using a notebook computer and have printed to a file while away from the office and now want to dump it to the printer. Just use WinSpool.

Printing service bureaus can use WinSpool to send print files to their printers or plotters unchanged, allowing full control of printer settings for their clients eliminating the need for complex printing instructions.

Some DOS or Windows programs, such as AutoCAD, have excellent printer drivers of their own. Such drivers may have better features or greater efficiency than the standard Windows drivers. But often, as is the case with AutoCAD, the computer may slow down terribly while printing or it may not be able to control the printer device reliably, as the non-Windows driver and Windows vie for control of the printer port. WinSpool allows you to plot to a file and then send the file, eliminating such problems while allowing use of enhanced drivers.

Print Manager won't be useful in any of the aforementioned situations. You need WinSpool.

File Watch Method

WinSpool's default mode of operation is called File Watch. While minimized, WinSpool watches the contents of a user-defined directory for the creation of new files. If a new file is created which matches the file specification you have set, WinSpool examines the file contents, determines the proper printer and sends the file on its way.

WinSpool notifies Print Manger of the print job. When the file is sent, Print Manager deletes it.



When WinSpool is not minimized, it is not checking for files. WinSpool will normally start out in a minimized state. If you Restore it, WinSpool assumes you want to change its settings. Click the OK button to save the new settings and minimize WinSpool. WinSpool will then resume watching for files.

Drag and Drop Method

When WinSpool is running, any files you drag and drop on it will be examined and sent to the appropriate printer. Drag and dropping does not affect WinSpool's normal File Watch activities, and WinSpool will continue to run after a drag and drop event.

Please note that if WinSpool is not already running, and you drag and drop files onto its icon in Program Manager (or other shell programs), the file names will be passed to WinSpool as command line parameters. WinSpool will send the files and then quit, just as if the Command Line Method had been used.

Command Line Method

You can tell WinSpool to spool specific files and then quit by passing the file names as command line arguments.

You may use wildcard patterns with WinSpool to send groups of files or even whole directories to the printer easily.

Be careful: WinSpool deletes all files it sends to the printer, so it would be possible to spool and delete ANY file --including program files.

Example:

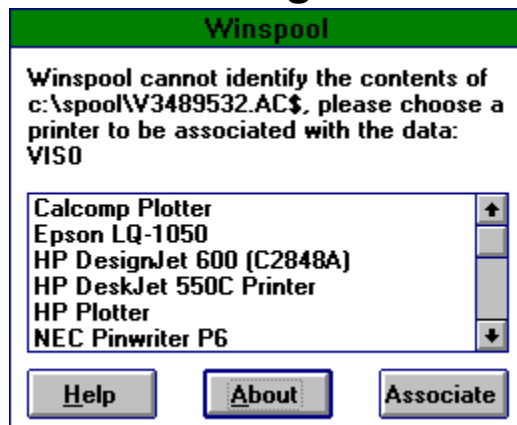
If you wanted to spool two files named FILE1.PLT and FILE2.DAT to the appropriate printers, you can use Program Manager's run feature to issue the Windows command:

```
WINSPOOL.EXE FILE1.PLT FILE2.DAT
```

(Full path names should be specified for WINSPOOL.EXE if it is not located within your DOS search path, and for FILE1.PLT and FILE2.DAT if they are not in the current directory.)

WinSpool will then examine the files, identify the correct printer, spool the files and then quit.

Associating Data and Printers



When WinSpool finds a file to spool it inspects the file contents to determine where to send the file. WinSpool does this by reading the first few bytes of the file and comparing them against a set of "data keys". When the keys match, WinSpool knows where to spool the file.

If WinSpool can't figure it out, WinSpool asks for your guidance. You will see a dialog box showing the file name, the data key, and a list of available printers. Just choose a printer and click on the associate button to create a new data key linking the data to the printer device. WinSpool will send the file and record the key.

If you send a similar file in the future, WinSpool will match the data key, and therefore not ask for guidance.

[Undoing an Association](#)

Undoing an Association

Should you make a mistake, or reconfigure Windows printers, WinSpool may try to send data to the wrong printer. You can edit the WINSPOOL.INI file to make WinSpool "forget" its data keys. Just delete the line in the Keys section with the offending printer device.

Unsupported Printers

Instructions

Since WinSpool effectively bypasses the Windows printer driver for the printers it sends data to. Thus WinSpool does enables you to print via Windows to printers which are not supported by Windows. This allows you to take advantage of Print Manager's ability to cue and deliver multiple print jobs and to make any networked printers available to Windows also available to DOS.

Unsupported Printer Instructions

To use WinSpool for a non-Windows supported printer, do the following:

- 1 Use the Control Panel program to add a new printer device for your unsupported plotter. You may use any driver whatsoever. We suggest you use the Generic/Text Only driver because it is simple and uses very little space. While you are in Control Panel, enable Print Manager.
[Control Panel, Printers, Add>>, Generic/Text Only, Install, Use Print Manager]
- 2 Once the new printer device appears in the Installed Printers list, select it and Connect it to the port to which your printer is attached. This may be a virtual port if the plotter is on a remote computer of a network. Exit the Control Panel program.
[Connect..., LPTn: or COMn:, OK, Close, Alt+F4]
- 3 (Optional for advanced users) You can use SYSEDIT.EXE to change "Generic/Text Only" to whatever printer name you like (we'll use "NewPrinter"). Do this in the Devices and Printer Ports sections of WIN.INI. Also rename the "Generic/Text Only,LPTn:" section in WIN.INI to "NewPrinter,LPTn:". Check your work by saving WIN.INI and restarting Control Panel. If "NewPrinter" is listed as an Installed Printer, then you have succeeded.
- 4 Turn on your printer. If you are connected to a COM port, use the Control Panel program to set serial port parameters required by your printer. Refer to your manufacturer's information for these settings.
- 5 Print to a file from any program which does support the printer. Configure WinSpool to look for the file or simply drag and drop the print file on top of the WinSpool icon.
- 6 When WinSpool inspects the print file and it has unidentifiable contents, WinSpool will ask you where to send the file. Select the new printer you have added from the list of printers shown and click the Associate button. The file should be sent to your printer. All subsequent similar files should be sent automatically. Watch Print Manager for any errors (handshaking, printer not responding, stalled prints, etc.).

Benefits of Registration

- n Unlimited program usage, all program features enabled, no delays.
- n One year free program updates and customer support via CompuServe or US Mail.
- n Notification of updates and other JCI product releases.

You may use the unregistered program for 30 days to determine if the program is appropriate for your needs, after which you must register the program if you continue to use it in any way.

[CompuServe Online Registration](#)

[Registration by Mail](#)

[Distribution](#)

We welcome your suggestions, comments or bug reports. They enable us to continue development of WinSpool, make it even more useful, and eliminate any problems.

[Registration Codes](#)

CompuServe Online Registration

Instructions

The fastest and easiest way to register WinSpool is via CompuServe's Online Shareware Registration (SWREG).

When you register via SWREG, the registration fee is charged to your CompuServe account and JCI is immediately notified of your registration.

JCI then use the registration code you enter during registration to create a unique counter code which will fully enable all program functions and remove any evaluation timeout limitations. JCI will send you your counter code via CompuServe mail as soon as we receive notice of your registration. In most cases this should only take a few hours.

CIS Registration Instructions

Follow these instructions to register WinSpool on CompuServe. You will need a valid CompuServe account to do so.

- 1 Start up WinSpool. Click the Register button on the About dialog box.
- 2 Enter your name and click OK.
- 3 WinSpool will show you your registration code. Copy this down.
You can either leave WinSpool in this state until you receive your countercode or cancel the registration process.
- 4 Log on to CompuServe and go to the Shareware Registration forum [CIS:SWREG].
- 5 Select the option to Register Shareware.
- 6 Select option 1., Registration ID.
- 7 Enter WinSpool's ID number: 1934
- 8 If you see the correct program description, confirm it by typing Yes.
- 9 Enter your name and the other information as requested.
PLEASE APPEND YOUR REGISTRATION CODE TO THE END OF YOUR COMPANY NAME.
(e.g., if your registration code is ABCDEFGH and you work for Acme Plumbing, enter Acme Plumbing ABCDEFGH; if you don't have a company name or wish not to include it just enter ABCDEFGH).
This is how JCI receives your registration code. You will not be specifically asked for it by SWREG.
- 10 When asked for the number of copies, enter 1. If you need multiple copies of WinSpool just repeat the above process for each copy. The registration code is uniquely keyed to your computer, so three copies of WinSpool with the same registration and counter code can only run on the one computer. You should have a different registration code for each computer and each copy.
- 11 You get one more chance to review, confirm or cancel the registration. Do so. You may now log off CompuServe.
- 12 In a few hours or so, you should receive a Thanks for Registering note in your CompuServe mailbox. This note will include your counter code.
- 13 In WinSpool, place your countercode in the box below your registration code. If you have to restart WinSpool to do this, do not change your name from what you entered it previously. Just click on the OK button.
When you enter the counter code and click OK, you should see a Thank You message confirming your registration.
The program is now fully enabled.

Registration by Mail

Registration Form

JCI has made an effort to keep the costs of this program low and the response times short. Payment in cash or money order is preferred as it reduces our work in tracking the many checks that come in and eliminates and delay waiting for your check to clear.

To begin the registration process, press the Register button on the information screen. Enter your name and other requested information. You will be given a registration code which you should send along with your fee to the address at the bottom of form.

After you have registered, you will be sent a counter code. You should repeat the registration process without changing any values previously entered. Place the counter code in the box at the bottom of the form. If your registration and counter code are correct, the program will be fully enabled and registered to your name.

Register faster, easier via CompuServe

JCI Registration Form

Your Name: _____
Company: _____
Address: _____

CompuServe ID: _____,
Program: _____
Version: _____
Registration Code: _ _ _ _ _

- 1 Print one form for each program you wish to register. (Press Alt+F, P).
- 2 Complete each form. Fill in all the spaces. Don't forget the Registration Code! Get your registration code for each program by pushing the Register button and entering your name.
- 3 Send the form and your registration fee to: JCI, 6 Harbor Way 132, Santa Barbara, CA 93109

As soon as we receive your registration and payment, JCI will send you your unlock countercode. If you include a CompuServe ID, JCI will send you the countercode via CompuServe mail, which is faster. For immediate registration via CompuServe, see CompuServe Registration.

[CompuServe Online Registration](#)

Registration Codes

This program uses a registration code system. When you register, JCI will send you a unique unlock counter code which will fully enable the program on your computer. You already have the complete program, you just need the countercode to fully enable it.

Unregistered versions have some features disabled, only run for a limited time, and have a startup delay to display program information. This method allows you to check out the "real" program with a minimum of inconvenience. This method also lets you convert the program into a licensed copy with just one word. You don't have to wait for a disk in the mail or reinstall anything.

Your registration code and counter code are unique. They are valid only for your computer and the name you have given. The same codes will not function should you change the user name or computer system.

Obtaining Registration Codes

Program Requirements

To properly function, WinSpool requires the following:

- n VBRUN300.DLL - Visual Basic 3.0 run time library
usually located in \WINDOWS\SYSTEM directory
- n PRINTMAN.EXE - Windows Print Manager
standard with all Windows versions
located in \WINDOWS directory

Disclaimer

This program is not explicitly warranted for any use, nor is any implied. The customer accepts all responsibility for the use, or misuse of this program and all initial or subsequent damages resulting thereof. JCI shall be solely responsible for the refund or replacement cost of the WinSpool program alone. JCI guarantees the satisfaction of it's customers. If you are not satisfied with the program for any reason during the registration period, JCI will refund your WinSpool registration fee.

WinSpool In Action

How To

[AutoCAD Autospool](#)

[No Windows Printer Driver](#)

Examples

[Network Printer/Plotter Sharing](#)

[Windows for Workgroups](#)

Troubleshooting

[Undoing and Association](#)

[Program Requirements](#)

AutoCAD Example

Instructions

Necessity is the mother of invention, and the necessity which gave birth to WinSpool was the use of AutoCAD (both DOS and Windows versions) under Windows (specifically Windows for Workgroups).

AutoCAD has its own printer and plotter drivers which are very efficient and capable of great output, but they just don't cooperate very well with Windows. AutoCAD drivers want to speak directly with the printer or plotter, but Windows doesn't like to surrender control. Plotting to a remote printer (one that is not directly connected to your computer) just further complicates things.

AutoCAD for Windows can use Windows system printers, but the process is very slow, and Windows drivers for some printers (such as HP plotters) are very inefficient.

In the end, the fastest way for any version of AutoCAD to produce a plot is for it to plot to a file using its own drivers. This means that AutoCAD does not have to waste time handshaking with the target printer; it can plot just as fast as it is able. Sending that file to the printer was the missing step for which WinSpool was created.

- n On one station set up a \SPOOL directory on any drive. Share that directory with the workgroup, allowing full read-write access. This directory does not need to be on a dedicated server, nor on the computer to which the target printer is attached.
- n Each user of the workgroup should connect to the shared directory as drive S: (any drive letter can be used).
- n One station runs WinSpool in File Watch mode. Configure it to watch for v*. files in the spool directory (S: if it is not the computer containing the directory, \SPOOL otherwise).

The station running WinSpool need not be any particular computer. It can be any computer which has read-write access to S: and is configured under Windows to print to all target devices. WinSpool can only spool to those devices to which the computer running WinSpool has access.

- n WinSpool will then detect the new files, inspect them, and send them off to the appropriate printer via Print Manager.

AutoCAD Instructions

These instructions are for setting up WinSpool to locate and process plot files created by AutoCAD's Autospool feature. They apply to equally to stand-alone or networked computers, and to all versions of AutoCAD.

- 1 Configure your printers using Control Panel per the instructions in your Windows manual. Make sure the printer connections are set to the correct port.
- 2 Create a directory which will be where you place your plot files to be spooled. (e.g., C:\SPOOL) This can be any name, anywhere on your local computer or network.
- 3 Configure AutoCAD to use the Autospool feature:
 CONFIG
 7. Configure operating parameters
 3. Default plot file name
 AUTOSPOOL
 4. Plot spooler directory
 C:\SPOOL\ (name from step 1)
 6. Network node name
 (any unique name)
- 4 Run WinSpool in File Watch mode (this is the default mode). Configure WinSpool to watch for v*.* files in the spool directory C:\SPOOL. Leave WinSpool running.
- 5 Plot to a file using AutoCAD. Use the default AUTOSPOOL filename. This creates plot file Vxxxxxxx.nnn in the C:\SPOOL directory, where xxxxxxxx is a number representing the date/time and nnn is the network node name.
- 6 After the plot is complete WinSpool will see the new file and inspect it. Because WinSpool has never encountered a file of this sort before, it will ask you to which printer you want the data sent. Choose a printer from the list and click Associate.
- 7 WinSpool then sends the file to the printer via Print Manager. Your file should begin to print.

Network Notes

In a network situation, you would want to use one spool directory which is accessible to all users. make sure the AutoCAD node names are different for each computer. Any of the workstations may run WinSpool, but only one needs to do so, thereby reducing the workload on the other stations. WinSpool can only print to those printers available to the workstation which runs WinSpool.

Windows for Workgroups Example

Instructions

Windows for Workgroups(WFW) is a peer-to-peer networking system built on top of Microsoft's Windows 3.1 operating environment. WFW offers file and printer sharing, mail, scheduling, and remote access to Windows users without the technical hurdles of more complex, server-based networks.

WFW also supports most major networks, providing concurrent access to multiple server-based networks in addition to WFW. But, for most of us, WFW is inexpensive networking without the need for a PhD. It lets us share resources without too much hassle.

WFW Server

Although WFW is designed as a peer-to-peer networking system, it may be more useful to dedicate one of these peers to operate as a server. This serves as a central place to store data and programs which are of use to the entire group. It can also serve as a print server of sorts.

A peer-to-peer network is only really functional when all of it's peers are logged on. As peers drop off the network, so do the shared resources. Another disadvantage is that which resources are shared and how they are shared is distributed to everyone, with each user in charge of their own resources. This may be ideal for two or three people working together, but it can also lead to disorganization or confusion in larger groups.

Example

If Judy needs a file on Joe's computer and Joe isn't logged on to the network, Judy can't get the file. If Jerry want to print to the printer on Jim's computer, then Jim has to be logged on, and Jim will hate Jerry because Jim's computer will slow down while it's printing out Jerry's job. If Jake want's to do his work in DOS, then no one can access any of his resources unless he also buys and runs the DOS workstation add-on. If John is a hacker and frequently dumps his computer, then everyone connected to him is suddenly cut off without warning.

These folks would be alot happier if they took one machine and dedicated it as their server. Everyone would know where to look for files. The server would alleviate the printing load so no one would suffer from printing slow downs. The server would be far more stable and reliable and all the important files could be backed up centrally on it. Each person could work in DOS or Windows at their own disgression. John could crash his computer all he likes without affecting anyone. They'd also be wise to run WinSpool on the server to provide network printer/plotter access for thier DOS applications.

Printing Arbitration

WFW is not too much more, however, than Windows 3.1 plus networking. WFW inherits Window's method of handling conflicts in printer sharing.

When DOS and Windows programs both ask for access to a printer at the same time, Windows becomes an arbitrator. How Windows solves the arbitration depends on how you have set certain values in the Windows Control Panel, and although the result of this arbitration varies one thing does remain the same: either Windows or DOS is denied access to the printer.

WinSpool solves this by allowing DOS programs access to the printers via Windows. The DOS program prints to a file. WinSpool grabs the file and sends it to the appropriate printer as if it had originated from a Windows application. This eliminates the conflicts.

DOS Access to Remote Printers

WFW also provides access to shared printers for DOS applications. WFW tries to fool DOS into thinking that the remote printer is physically attached to your computer.

The problem here is that many DOS applications directly address the printer port hardware in order to improve control or speed.

Another problem is that some printers (especially plotters) are serial devices which are subject to data errors in network situations. The network simply can't transfer data fast enough between the computer requesting control of the printer and the remote printer to handle the handshaking that typically goes on with serial device control. The communication becomes unreliable.

WinSpool solves the problem. By sending the printer data to a file and then letting WinSpool handle it, the data is delivered to the printer more reliably and without the DOS program directly accessing the (wrong) hardware.

WFW Instructions

These instructions will work fine for any WFW setup, although you will get better performance if one workstation is set up as a dedicated server.

- 1 Install WFW as directed in the WFW manual. Get it up and running with all computers logged on.
- 2 On computers where printers are directly connected, use Control Panel to install and connect the printers. Share the printers.
- 3 On the computer that will be running WinSpool (server preferred), use the Control Panel to install and connect all of the printers available locally and remotely. This computer now has access to all of the printers on the network.
- 4 Create a directory to hold your print files that you want WinSpool to handle. This directory can be anywhere on the network to which users have read-write access. Preferably it will be on the computer acting as your server. (e.g., C:\SPOOL\)
- 5 Run WinSpool. Configure it to look for files in the directory you have created. Use an appropriate file specification for the types of files you will be creating. Click WinSpool's OK button. If it's happy it will minimize itself and stay out of the way.

Now when you print to a file in the spool directory, WinSpool will inspect it and ask you where to send the data. It will give you a list of the available printers. This is the same list as in Control Panel.

Choose a printer and click Associate. WinSpool will send the data to that printer. Any print data in the future that appears to be the same kind as the previous file will be sent to the printer you have associated. If it's different WinSpool will ask you where to send it.

- n Some Windows programs also print faster to a file then they do to Windows printers. This is especially true of Windows programs which have their own printer drivers. If you'd like to have WinSpool handle print files from your Windows programs insert the line C:\SPOOL\OUTPUT.PRN into the [Ports] section of your WIN.INI file and connect any printer you like to the new port. Now Windows will send it's output to a file and WinSpool will take over from there.

Welcome to WinSpool

Thanks for trying WinSpool, the Printing Problem Solver!

WinSpool is a unique program that solves many printing problems associated with Windows and speeds up printing to boot! Use WinSpool to:

- n Give DOS applications access to the Windows Print Manager.
- n Resolve DOS/Windows printing conflicts.
- n Give all computers/applications on your network access to networked printers.
- n Cut your CAD plotting speeds in half and improve reliability.
- n Send PRN files to any printer.

There are so many uses for WinSpool, you'll wonder how you ever lived without it.

Introduction

Special Introductory Offer!

For a limited time JCI is making WinSpool available to CompuServe users at a special introductory price of just \$20 dollars! That's almost half off WinSpool's retail price, so take advantage now of this unbelievable savings!

As a registered WinSpool user, you'll receive:

- n Free program updates and customer support via CompuServe or US Mail for one year.
- n Unlimited program usage, with no time outs, disabled features, or program delays.
- n Notification of updates and other JCI product releases.

This offer won't last long, so get WinSpool now for half price! Better yet, use CompuServe's online shareware registration and receive instant savings!

CompuServe Registration

Register by Mail

[Click here for program information.](#)

[Click here](#) to confirm the association between the data shown and the printer ou have chosen.

This text shows the drive and directory you have currently selected.

Click this button to pull up the directory browser. The directory you choose will be entered into the Directory to Watch box.

Select a directory from this directory list. You can double click on directory items to expand or collapse directories.

Select a drive from this list of available ones.

[Click here to discard your changes and cancel the operation.](#)

This is the data that WinSpool sees in the file. It will be the "data key" for this kind of print file.

Direct Jet Instructions

Note: These instructions should be appropriate for any direct connect printer or plotter which is supported by Windows.

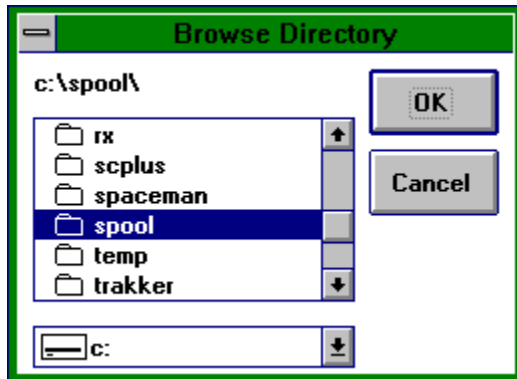
- 1 Set up the HP Direct Jet printer/plotter per the instructions provided by Hewlett-Packard.
- 2 Install the HP Direct Jet windows software as directed, so that the Direct Jet is visible as a valid Windows printer within Control Panel, Printers.

That's it! Direct connect printers are supported by WinSpool because they are supported by Windows. When WinSpool does it's work, the Direct Jet is listed right along with all the other printer devices. Just choose it like any other printer.

So now you can plot to a file and have WinSpool throw the plot to a network plotter!

Directory Browser

Use the browse directory dialog to select a directory on any drive. Only existing directories may be chosen.



Enter the directory you would like WinSpool to watch for files. This is the place where you will place your print files that you would like WinSpool to process. You can also choose a directory with the Browse button at the right.

This is the name of the file WinSpool is inspecting.

Enter a file specification for the names of files you want WinSpool to process. WinSpool will look at all the files matching your specification in the Directory to Watch location. You may use any valid DOS wildcard string.

This is a short list of some common file specification strings. Use it to enter values into the File Specification box.

(For Example: AutoCAD's Autospool feature creates files with the names "Vxxxxxxx.nnn", where 'x' is a unique number and 'n' is the user's node name. Choose the Autospool entry from the list to make WinSpool look for these files).

Click [here](#) to get more help.
This is the same as pressing F1.

Network Usage

Windows for Workgroups Example

WinSpool has been tested with Windows 3.1, Windows for Workgroups, and Novel Netware. It should also be compatible with Windows NT, MS Lan Manager, and most other PC networks.

WinSpools requires only that your printers be configured under Windows. If you can print to a printer from a Windows application via Print Manager, you will also be able to WinSpool to it.

If you have any network problems with WinSpool, please bring them to our attention so that we can make WinSpool work for you.

In some cases it is actually possible to use WinSpool with a printer which does not have a valid Windows device driver. Windows applications need the device driver to interpret output to the printers "Device Context", but WinSpool sends the data to the parallel or serial port unchanged, bypassing the device driver.

WinSpooling to Printers without Windows Drivers

Network Print Servers / Direct Connect Devices

Network Print Servers

Example: Connecting and HP Direct Jet

Many modern printers have the ability to connect directly to a network as print servers. These direct connect printers are not cabled to the parallel or serial port of a computer, they are directly connected to the network cable itself. This kind of printer can greatly increase printing speed while saving money since it doesn't need any host computer.

Unfortunately, these direct connect printers aren't supported by most DOS programs and some networks since they don't conform to LPTx or COMx addressing. These devices are also relatively new, so most programs don't have features which support them.

This is where WinSpool solves the problem. So long as Windows can address the direct connect printer from the computer that WinSpool is running on, WinSpool can also address the printer.

[Click here to save the changes you have made.](#)

This is a list of the Windows printers installed on your system. Choose one of these printers and click Associate to create a new association between the print data shown and the target printer. In the future WinSpool will send any print file with the same data to the printer you have choosen.

Associate

WinSpool identifies print files by their contents. You 'associate' the file data with a printer device to teach WinSpool where to send that kind of data. After this, when WinSpool finds similar data, it will send it to the same printer automatically.

Command Line

This does not refer to the DOS command line, but to the typed command available through the Program Manager or File Manager "Run" command (located on the File pulldown menu).

Control Panel

Control Panel [CONTROL.EXE] is a standard Windows program which allows users to set up printers, network connections, fonts, and many other user preferences.

Copyright 1994 JCI

WinSpool is Copyright 1993,1994 by JCI. All rights reserved.No modifications may be made to this program in any way without the express written consent of JCI.Programmed by Brent JacksonJCI, 6 Harbor Way 132, Santa Barbara, CA 93109, USACIS 72607,527

counter code

This code is sent to you by JCI when you register. It validates your registration and fully enables the program. This code is unique for your name and computer. If you change your name in the program, or attempt to move the program to another computer, the program will revert to an unregistered state.

Drag and Drop

A standard Windows feature allowing you to drag files from the File Manager onto other programs. You can drag files to WinSpool to make WinSpool print them.

driver

A printer driver is a module which tells a program how to print to a specific printer. Windows printer drivers [*.DRV] tell all Windows programs how to use that printer. DOS and Custom printer drivers are for use by only one particular program.

File Watch

A mode in which WinSpool monitors the contents of a directory for new files. Any new files that appear in the directory will be processed by WinSpool.

local

Attached to your computer.

network printer

A printer which is not directly attached to your computer, but to which you have access via your network.

Print Manager

Print Manager is a program included with all versions of Windows [PRINTMAN.EXE]. It's function is to manage access to local and remote printers for Windows programs

printer

Most references to "printer" can be read "printer/plotter". Although plotters are usually much more difficult to work with due to their serial port or non-standard connections, WinSpool can handle both equally well and treats them the same. Thus "printer" can be any output device.

registration code

When you start the registration process, the program will create an unique ecrypted code which is based on your computer and the name you have given. This is your Registration Code. JCI uses this code to create a Counter Code which is used to fully enable the program.

