

Getting Started

The topics are useful when starting:

[About Switch](#) - A bit about Switch.

[About the Author](#) - A bit about myself.

[Order Form](#) - Print to order.

[Registering](#) - How to and what features are enabled by registering.

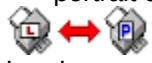
[Switching Duplex](#) - How to use.

[Selecting Printers](#) - How to use.

[Switching Orientation](#) - How to use.

Switching Orientation

Right mouse clicking on the Switch icon will toggle the printers orientation between landscape and portrait orientations.



Landscape Portrait

Switching Duplex

Right mouse clicking on the Switch icon while holding a shift key down will toggle the current setup through the duplex options (if the selected printer supports duplexing). The order that the duplex is toggle through is Single-Sided, Double-Sided with Long Edge Binding.



Using portrait.



Using Landscape.

Registering

Once you have mailed \$5.00 for Switch, you will receive a code. Type in the code exactly as indicated in the edit box to the right of the Register button on the Switch 1.0 Registration screen. Then press the Register button.

The registration password only needs to be entered once.

The following features are disabled until registration password is entered.

[Selecting Printers](#)

[Always on Top](#)

[Shrinking Caption](#)

The registration password will work with all 1.X releases of Switch.

[Order Form](#)

Order Form - Click File/Print Topic to print.

Switch 1.0 Registration

Mail to:

Mark Mazurik
2173-B Lake Park Drive
Smyrna, GA 30080

Name _____

Address _____

City _____ **State** _____ **Zip** _____

Country _____

Email _____

Copies	Description	Cost	Total
	<u>Capture 3.1</u>	\$10.00+\$2.00 S&H	
	Switch 1.0 Registration	\$5.00	

Total Enclosed \$

Optional:

Where did you obtain Switch 1.0? _____

On a Scale of 1 to 10, I rate Switch 1.0 a _____

If I could add one function, it would be _____

Bugs and Irregularities Found _____

Other Comments _____

About the Author

The author of Switch 1.0 is a part-time graduate student at Clemson University majoring in Computer Engineering. \$%#@, I hate talking about myself in the third person. If you find this program useful, please send in the Registration Fee (or more).

This program was developed in **Borland C++ 3.1** (using the C Compiler), the incredibly helpful **Bounds Checker for Windows** from **Nu-Mega Technologies Inc.**, and **Robo Help** from **Blue Sky**.

Selecting Printers

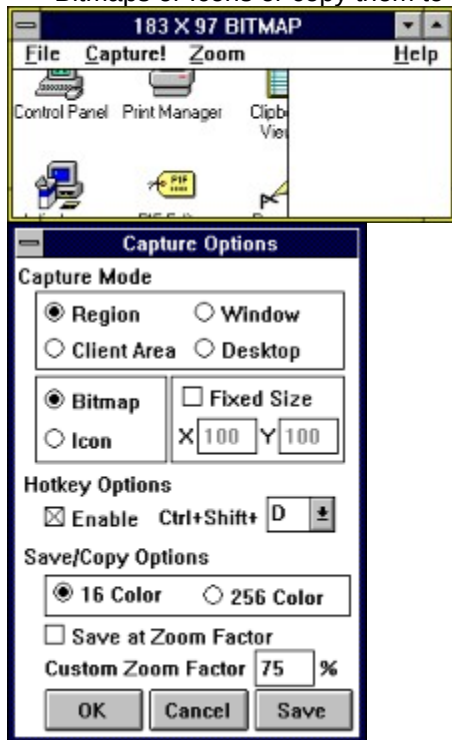
This brings up the Printers screen of Control Panel and will allow the user to select a printer or perform any operation that would otherwise be performed there. If this application launches the Control Panel, it will close when the user clicks on Close/Cancel.

Switch

Switch is a simple utility that remains iconized. It allows the user to switch orientation and switch duplex as well as allowing the user to quickly change printers . Switch is \$5.00 shareware.

Capture 3.1

Capture 3.1 is a powerful utility that captures portions of the windows screen, and either save them as Bitmaps or Icons or copy them to the clipboard.



Capture 3.1 has many options and can be purchased for \$10.00 + \$2.00 Shipping and Handling. It can be found in an unregistered version which has disabled functions on many popular FTP sites (wuarchive.wustl.edu and others) as well as Compuserve.

Always on Top

When this item is checkmarked the icon has a gray background with a black rectangle and stays on top of all other windows much in the same way that clock can. This feature is only available after the registration password has been entered.



VS.

Always on Top

Normal

Shrinking Caption

This option is used to shrink the caption, which is especially useful in conjunction of with the [Always on Top](#) option. If anyone knows how to completely remove the caption, please contact me and I will send you registered versions of [Capture 3.1](#) and Switch.



VS.



Caption

No Caption

