



# Jump Color Help Contents

## Welcome to Jump Color 2.0 for Windows!

Jump Color 2.0 lets you modify the different types of hypertext "Jump Colors" that are used in the *Windows Help* and *MS Multimedia Viewer* engines.

**Choose from the following topics for more information**

[Why Do I Need It?](#)

[New Features In Jump Color 2.0](#)

[How To Use Jump Color 2.0](#)

[Jump Color 2.0 Controls](#)

[Registration](#)



## Why Do I Need It?

Okay, I know...most people never even look at their Windows Help files. This utility is for those of you who **do** read them and actually try to learn something from them. It can be a real eyestrain trying to read that standard green jump text (also called Hypertext). The default green just doesn't go very well with some of the custom screen colors people choose to use with Windows!

Now you can choose from one of sixteen vibrant colors that might suit your taste, or your screen colors, just a little better.

## How It Works

The colors are stored using RGB values in the **WIN.INI** file. The color listings appear under two different sections:

[Windows Help] section

[Multimedia Viewer] section

You can manually change these color codes by editing the **WIN.INI** with a text editor such as *Note Pad*. Of course, this means you must know what the RGB color codes are, and take the time to go in and change them. Then you must restart Windows in order for the changes to take effect.

That's why I wrote Jump Color! It fully automates the process, and gives you instant previews of your color selections in a simulated Help or Viewer file. You can choose the appropriate setting(s) and change the colors as many times as you like, or you can choose the **Cancel** button to start over with your original colors. When you're satisfied with the color scheme you've selected, you can save your changes to the **WIN.INI** by choosing the **Change Colors** button. Windows is immediately notified of the modifications, and the new colors will appear the next time you start the *WinHelp* or *Viewer* engines (**WINHELP.EXE** and **MVIEWER2.EXE**).



# New Features In Jump Color 2.0

## New Features

Jump Color 2.0 for Windows still has the ability to set the colors for both Microsoft *Multimedia Viewer* **and** *Windows Help* files. New in version 2.0 are:

- A hypertext **Simulation Mode**. This is a realistic preview window you can use to view your color selections as they would look in actual Help/Viewer files.
- Ability to set all five types of hypertext colors! These include:

JumpColor

PopupColor

MacroColor

IFJumpColor

IFPopupColor



# How To Use Jump Color 2.0

## Jump Color 2.0 Window Controls

### Overview

There's really not much to it; I've tried to make this utility as user friendly as possible.

When Jump Color 2.0 loads, it automatically comes up with all the colors that are presently set in the **WIN.INI**. If there are no color entries present, it uses the default green that is pre-assigned in Windows. To see all the colors currently set on your system, choose a **Program** option, and then click the **Simulation** button.

Just select your options and colors, preview the simulation, click the **Change Colors** button, and **Poof**, the changes are saved! To change back to the dreary old green, click **Default** on the menu bar.

Program Options

Jump Options

Color Options

Command Buttons

## Program Option Buttons

---

These options let you to select which program(s) color setting(s) to change. Choose either:

### **WinHelp Engine**

Colors selections affect the WinHelp Engine and any changes you make will appear in your Help files.

### **Multimedia Viewer Engine**

Colors selections affect the Multimedia Viewer Engine and any changes you make will appear in your Viewer files.

## Option Buttons used for selecting the Jump type

---

These options are used for both WinHelp and Multimedia Viewer. Each program type's colors can be set independently of the other.

<b>JumpColor</b>	<b>Selects the Jump Color. Changes the JumpColor setting.</b>
<b>PopupColor</b>	<b>Selects the Popup Color. Changes the PopupColor setting.</b>
<b>MacroColor</b>	<b>Selects the Macro Color. Changes the MacroColor setting.</b>
<b>IFJumpColor</b>	<b>Selects the IFJump Color. Changes the IFJumpColor setting.</b>
<b>IFPopupColor</b>	<b>Selects the IFPopup Color. Changes the IFPopupColor setting.</b>

## Command Buttons

---

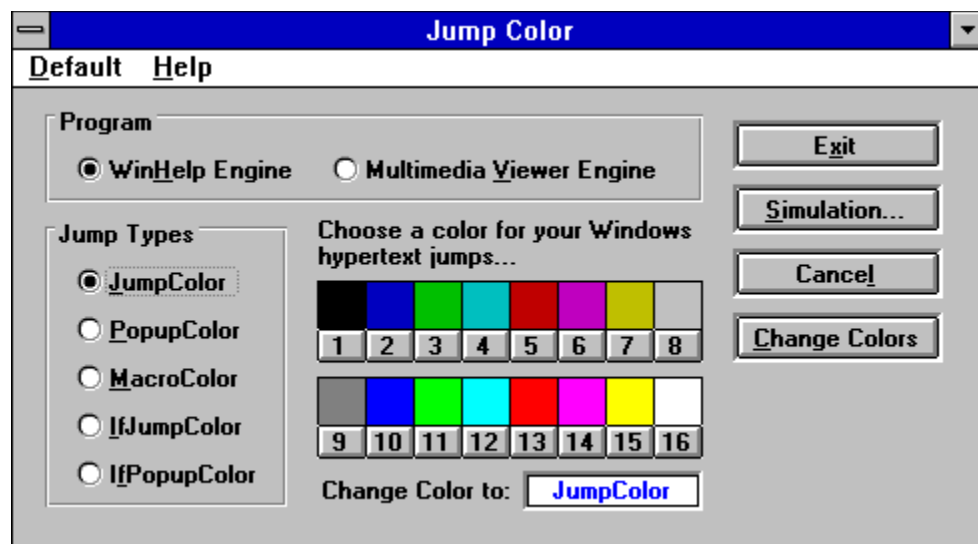
These are the buttons that control saving selections, previews, canceling, and exiting the program

<b>Exit</b>	<b>Quits the program.</b>
<b>Simulation</b>	<b>Opens the simulated Help or Viewer window (depending on your selected Program option).</b>
<b>Cancel</b>	<b>Undoes any selections you've made, and restores your system colors as stored in the WIN.INI</b>
<b>Change Colors</b>	<b>Writes to the WIN.INI all selections you have made.</b>



## Jump Color 2.0 Main Window Controls

This is the main window of the program. Click on any part of the window below to get more information about the Jump Color 2.0 controls.





# Registration

## Registration Form

I strongly encourage you register this product. Many long hours went into its design and development. The cost is minimal - only US\$5.00. Registration entitles you to a free upgrade and discounts on my other products. Send for a free catalog.

Feel free to distribute Jump Color 2.0 to your friends and associates. Jump Color 2.0 is only US\$5.00 and was written for anyone who finds it useful. Jump Color 2.0 needs the file **VBRUN300.DLL** to run, and the **JUMPCOLR.HLP** file is useful to people new to Windows and/or the Windows Help system.

I also strongly encourage you to send me any comments, suggestions, and other feedback you may have concerning Jump Color 2.0, so feel free to contact me through CompuServe. Enjoy!

**Robert W. McGregor, Screaming Tiki Software**  
**CIS 73122,3125**

Print Form



## Registration Form

The Jump Color 2.0 registration fee is a paltry \$5.00 US currency. Print and complete this form. Please send Check, Money Order, or Cash (yes, I still accept **CASH**) to:

**Screaming Tiki Software**  
**P.O. Box 515**  
**Cocoa, FL 32923-0515, USA**

**Name:** \_\_\_\_\_

**Address:** \_\_\_\_\_

**City:** \_\_\_\_\_

**State or Province:** \_\_\_\_\_

**Postal Code** \_\_\_\_\_

**Country:** \_\_\_\_\_

[Thanks for using Screaming Tiki Software!](#)



## **Quick Preview**

---

This little Quick Preview window shows what the selected color will look like against the window background color you've set in *Control Panel*.

## **[Windows Help] Section**

---

This section of **WIN.INI** stores the RGB codes for your *WinHelp* Hypertext.

## **[Multimedia Viewer] Section**

---

This section of **WIN.INI** stores the RGB codes for your *Viewer* Hypertext.

## **RGB**

---

The combination of the colors *red*, *green*, and *blue* that Windows uses to create all other colors in the 256 color palette. The range of each color is from 0 to 255.

### **Example:**

0 0 255 - This would be 0 parts red, 0 parts green, and 255 parts blue; in other words, **all** blue.

## **JumpColor**

---

"Jumps" you to another topic in the current Help/Viewer file.

## **PopupColor**

---

Shows a popup window originating in the current Help/Viewer file.

## **MacroColor**

---

Runs a command or set of commands that perform author defined tasks.

## **IFJumpColor**

---

Performs a "jump" to a topic in another Help/Viewer file than currently displayed.

## **IFPopupColor**

---

Shows a popup window originating in a different

Help/Viewer file than currently displayed.

## Help Menu

---

The Help menu gives you these choices:

<b>Contents</b>	<b>Opens the Help file you're reading.</b>
<b>How To Use Jump Color</b>	<b>Brings up the Help topic about how to use Jump Color.</b>
<b>Registration</b>	<b>Brings up the Help topic about how to register this fine (and useful!) program</b>
<b>Read Me...</b>	<b>Open the README.WRI file that came with Jump Color 2.0</b>
<b>About...</b>	<b>Displays information about the program.</b>

## Default Menu

---

Clicking this menu item will change the colors of the currently selected program (WinHelp or Viewer) back to the Windows default hypertext color, a lovely shade of **green** (this green was, by the way, the inspiration for writing the original **Jump Color**).

## Color Options

---

Clicking any of the numbered buttons or colored squares will change the color of the currently selected jump option. This change will affect only the currently selected program option. The changes are temporary until you click the **Change Colors** button.

