

## Contents

[Introduction](#)

[Generate New Documentation](#)

[View Documentation](#)

[Print Documentation](#)

[Code Librarian](#)

[Menu Bar](#)

[Tool Bar](#)

# Introduction

AutoDoc is an automated documentation generating tool for Microsoft Visual Basic. Documentation on following can be generated selectively by AutoDoc.

## **Global Data**

This includes a list of Global Variables, Constants, Subroutines and Functions in the project.

## **Form Details**

This includes a list of general procedures and functions, Controls and the associated Event used in the project.

## **Project Tree**

This includes the hierarchical structure of Forms and Modules in the project. The tree can be viewed as the Code Librarian. The Subroutines and Functions in the Forms or Modules can be extracted selectively for Viewing, Printing or Filing, so that it can be reused in other projects. Tree can also be used for tracking the procedure calls.

## **Comment Statistics**

This includes the statistical figures like the Number of lines of code, Number of lines of comments, Comment-to-Code ratio, Comment grades. The project statistics includes the Number of Forms, Modules, Number of Procedures, Functions, Global variables, Constants, Number of API/External function calls, Number of controls.

## **See Also**

[Generate New Documentation](#)

[View Documentation](#)

[Menu Bar](#)

## Menu Bar

The AutoDoc Menu Bar provides following menus.

### **File**

Allows to generate new documentation, Open existing documentation, Print the documentation. Set default printer or change paper size and orientation.

### **View**

Allows to view documentation for Global Data, Form Details, Project Tree and Comment Statistics.

### **Options**

Allows to set the Fonts and Comment Grading threshold value.

### **Help**

Shows Help Contents, Searches topics, Shows help on Getting Started.

### **See Also**

Tool Bar

## File Menu

### **New Document**

Opens the New Documentation dialog and allows to generate new documentation.

### **Open Document**

Opens the documentation that was created earlier.

### **Print Document**

Opens the Print Documentation dialog and allows to print the selected documentation files.

### **Print Setup**

Allows to set default printer, paper sizes and landscape or portrait mode printing.

### **Exit**

Ends the AutoDoc session.

### **See Also**

[View Menu](#)

[Options Menu](#)

## View Menu

### **Global Data**

Allows to view the Global Variables, Constants, Functions and Subroutines in the documented project.

### **Form Details**

Allows to view the Forms and Controls in them with associated Event procedures used and call to other Subroutines or Functions from them.

### **Project Tree**

Allows to view the complete tree of Forms and Modules with Event and General procedures in them for the documented project.

### **Form/Module Statistics**

Allows to view the Form and Module level comment statistics.

### **Project Statistics**

Allows to view the comment statistics of complete project. This view is available only if all items in New Documentation dialog were selected during document generation.

### **See Also**

[File Menu](#)

[Options Menu](#)

# Options Menu

## **Fonts**

Opens a Font selection dialog and allows to set fonts for various items.

## **Comment Grades**

Opens a dialog to set a threshold percetage value which will be used to decide the grade in Comment-to-Code ratio.

## **See Also**

[File Menu](#)

[View Menu](#)

## Tool Bar



### **Generate New Documentation**

New Documentation dialog box appears to start document generation.



### **Open Documentation**

Opens the existing documentation file for the project.



### **View Documentation**

View Documentation dialog pops up to select the documentation to view.



### **Print Documentation**

Print Documentation dialog pops up to select the documentation to print.



### **AutoDoc Help Contents**

Shows Contents of AutoDoc Help



### **Exit AutoDoc**

Ends your AutoDoc session after confirmation.

## **See Also**

Menu Bar

## Project Tree

Project Tree is a hierarchical structure of the project with Forms and Modules. It facilitates the Code Librarian to extract the reusable code in the project.

### Viewing Tree

Select Project Tree from View menu. If the Project Tree menu is disabled, documentation for tree is not available. In such case, generate the documentation for the project, with Project Tree option selected. For viewing the tree, the documentation should be open or should have been just generated.

### Printing Tree

Select Print Document from File menu. If the Project Tree option is disabled, documentation for tree is not available. In such case, generate the documentation for the tree. For printing the tree, the documentation should be open or should have been just generated.

### See Also

[Code Librarian](#)



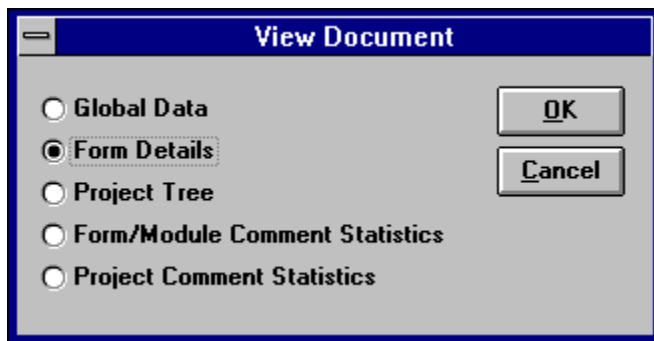
## View Documentation

To view the documentation, it must be open. The title bar of AutoDoc shows the name of the currently open documentation file. If not open, [Open Documentation](#)

Select View menu or click View button on the Toolbar.

If you select View menu, you can select any of the following items for views.  
[Global Data](#), [Form Details](#), [Project Tree](#), Form/Module [Comment Statistics](#) or Project Comment Statistics.

If you click Toolbar button, following view selection dialog appears in which you can select the above view items.



### See Also

[Code Librarian](#)

[Print Documentation](#)

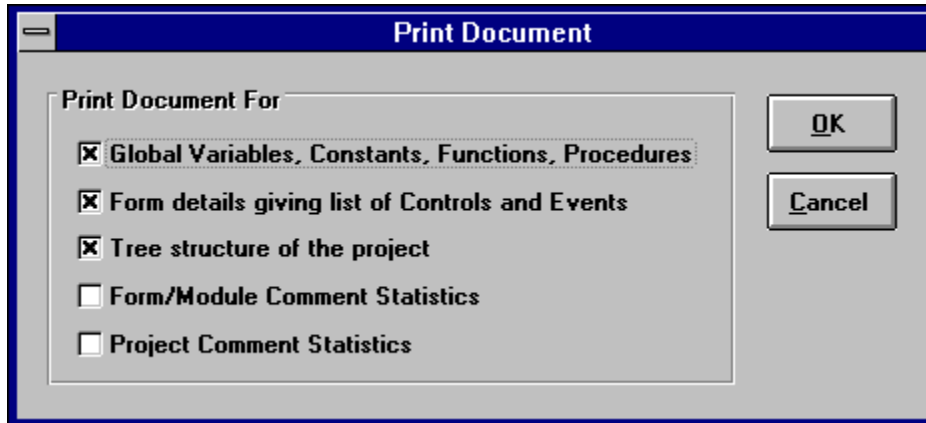
[Generate New Documentation](#)

[Open Documentation](#)

## Print Documentation

To print the documentation, ensure that it is open. The title bar of AutoDoc shows name of the currently open documentation file. If it is not open then [open documentation](#).

Select Print Document from File menu, or click button on the [Toolbar](#). When following dialog appears, select the items to be printed and press OK.



### See Also

[View Documentation](#)

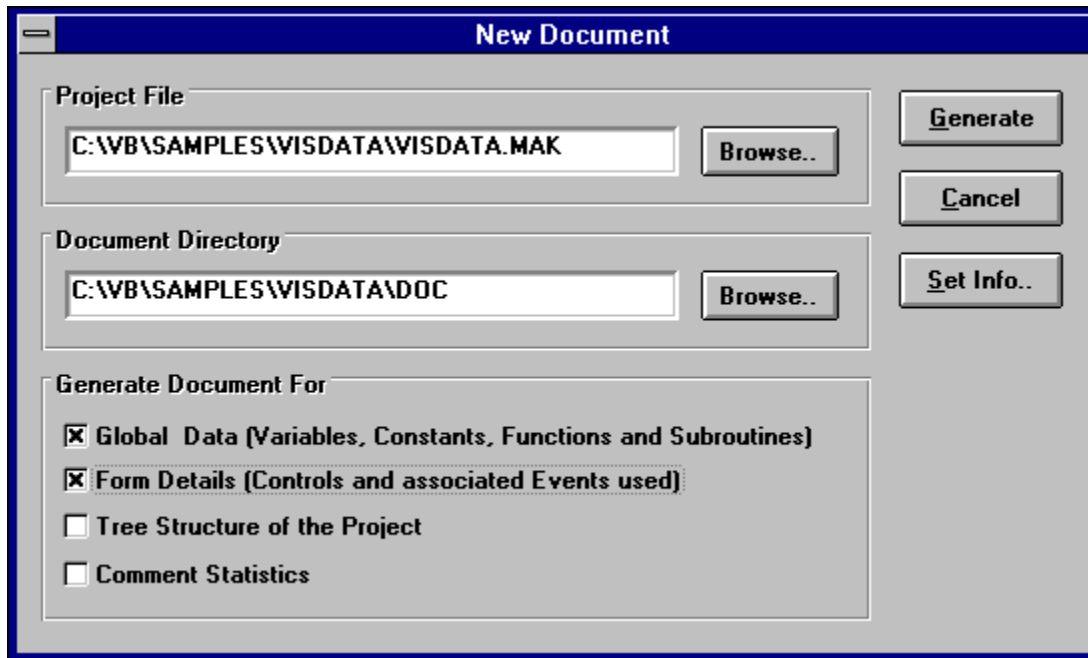
[Generate New Documentation](#)

[Code Librarian](#)

## Generate New Documentation

To generate documentation for any Visual Basic project, ensure that all files in it have been saved in ASCII text format and proceed with following steps.

From File menu, select New Document or click button on the Toolbar. Following dialog appears on the screen.



In the Project File, type Visual Basic project file name. Browse can be used to select the project file.

In the Document Directory, type the directory where you wish to keep the project documentation. If the specified directory does not exist, it will be created.

Select the items in Generate Document For to generate corresponding documentation.

Set the documentation header information using Set Info.

Press Generate button to start the documentation process.

### See Also

[View Documentation](#)

[Print Documentation](#)

[Open Documentation](#)

## Open Documentation

To open the documentation for the project, select Open Document from File menu or click button on the Toolbar. When dialog appears, select the AutoDoc file.

Note:

To view or print any previously created documentation, it must be opened first. The title bar of AutoDoc shows name of the open AutoDoc file. If the document is just generated then it is already open.

### See Also

[View Documentation](#)

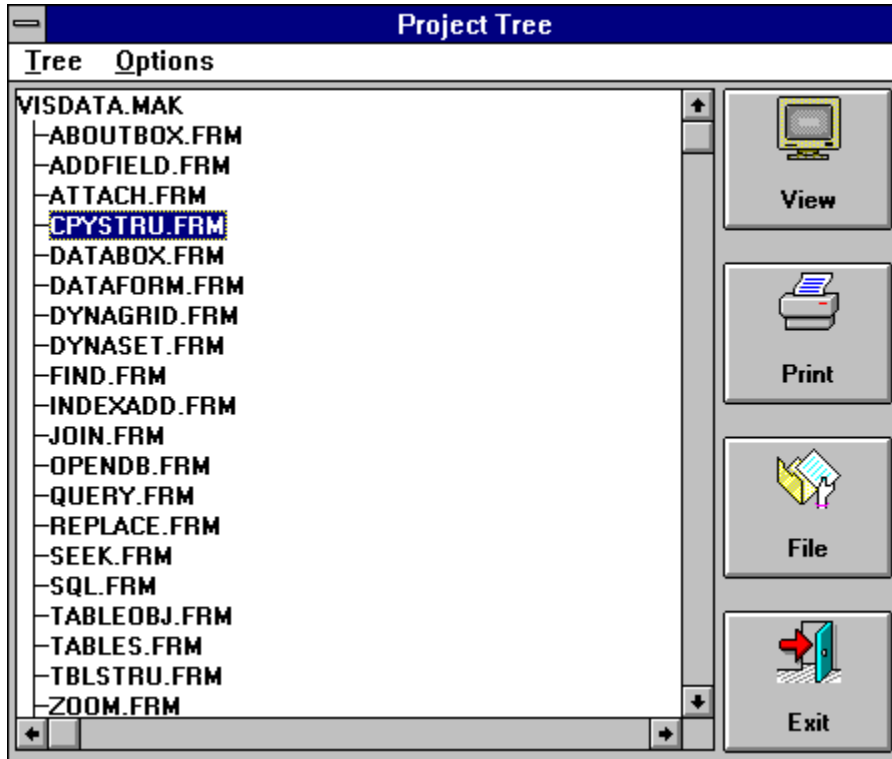
[Print Documentation](#)

[Generate New Documentation](#)

[Code Librarian](#)

## Code Librarian

AutoDoc allows to extract the reusable code from previous projects with the help of Code Librarian which is built in project tree view window. To invoke Code Librarian, select Project Tree in View menu options. Following window appears on the screen.



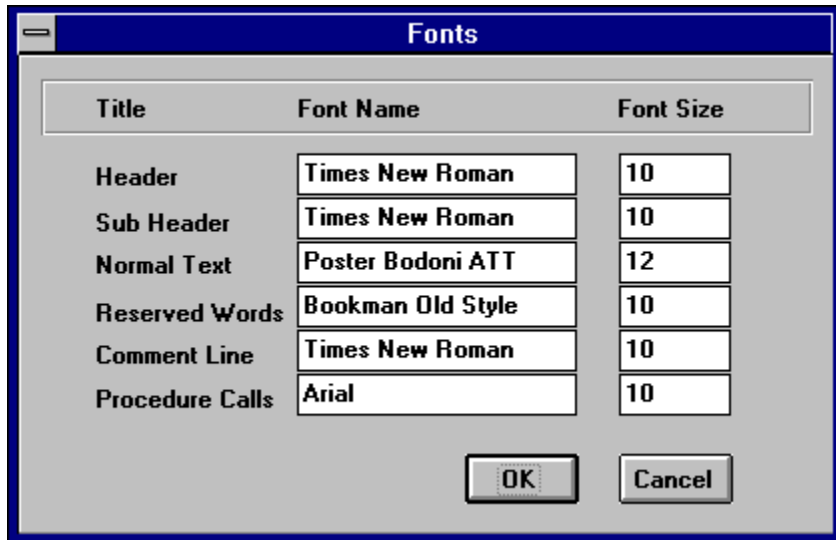
To View, Print, File the code, select the code and drag it on corresponding buttons with Right mouse button or press the button.

### See Also

[View Documentation](#)

## Fonts

Fonts for printing can be set by selecting Fonts from Options menu. Set Fonts and their sizes when following dialog appears.

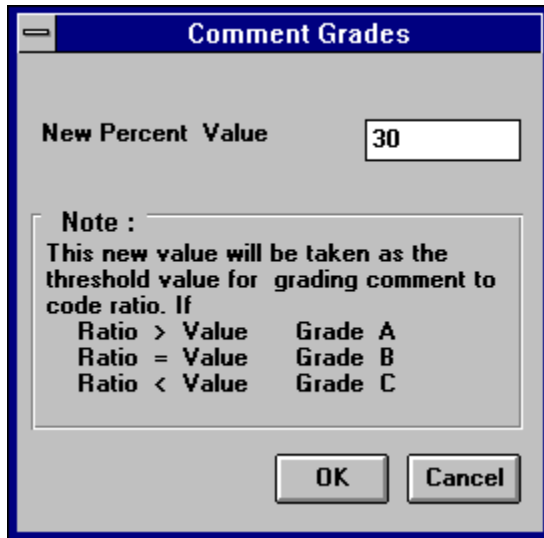


Title	Font Name	Font Size
Header	Times New Roman	10
Sub Header	Times New Roman	10
Normal Text	Poster Bodoni ATT	12
Reserved Words	Bookman Old Style	10
Comment Line	Times New Roman	10
Procedure Calls	Arial	10

OK Cancel

## Comment Grades

The threshold percentage value for deciding the comment grades in the documentation is set by selecting Comment Grades from Options menu when following dialog appears.

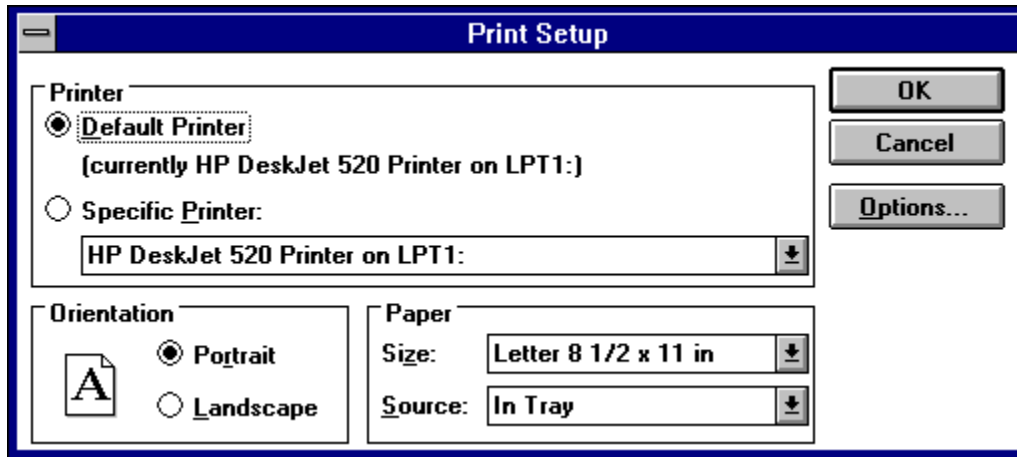


A screenshot of a Windows-style dialog box titled "Comment Grades". The dialog has a blue title bar with a minus button on the left. Inside, there is a label "New Percent Value" followed by a text input field containing the number "30". Below this is a section titled "Note :" containing explanatory text and a table. At the bottom are "OK" and "Cancel" buttons.


Note :	
This new value will be taken as the threshold value for grading comment to code ratio. If	
Ratio > Value	Grade A
Ratio = Value	Grade B
Ratio < Value	Grade C

## Print Setup

Print Setup allows to select printer, papersize and orientation. Select Print Setup form File menu for following dialog.



The image shows a 'Print Setup' dialog box with a blue title bar. It contains three main sections: 'Printer', 'Orientation', and 'Paper'. The 'Printer' section has two radio buttons: 'Default Printer' (selected) and 'Specific Printer:'. Below 'Specific Printer' is a text box containing 'HP DeskJet 520 Printer on LPT1:' and a dropdown arrow. The 'Orientation' section has a document icon with the letter 'A' and two radio buttons: 'Portrait' (selected) and 'Landscape'. The 'Paper' section has two labels: 'Size:' and 'Source:'. The 'Size' dropdown shows 'Letter 8 1/2 x 11 in' and the 'Source' dropdown shows 'In Tray'. On the right side of the dialog are three buttons: 'OK', 'Cancel', and 'Options...'. The 'Options...' button is disabled.

Print Setup	
<b>Printer</b>	
<input checked="" type="radio"/> <b>Default Printer</b>	
[currently HP DeskJet 520 Printer on LPT1:]	
<input type="radio"/> <b>Specific Printer:</b>	
HP DeskJet 520 Printer on LPT1: [v]	
<b>Orientation</b>	
	<input checked="" type="radio"/> <b>Portrait</b>
	<input type="radio"/> <b>Landscape</b>
<b>Paper</b>	
<b>Size:</b>	Letter 8 1/2 x 11 in [v]
<b>Source:</b>	In Tray [v]

OK  
Cancel  
Options...

### See Also

[Print Documentation](#)





