

Liquid MusicPlayer Help Index

How To ...

<<add your application-specific "how to" topics here>>

Commands

[File menu](#)

[View menu](#)

[Help menu](#)

File menu commands

The File menu offers the following commands:

<u>Open</u>	Opens a Liquid MusicPlayer file.
<u>Close</u>	Closes a Liquid MusicPlayer file.
<u>Preferences</u>	Sets users preferences for Liquid MusicPlayer.
<u>View Statistics</u>	Displays statistics window.
<u>Exit</u>	Exits Liquid MusicPlayer.

Song menu

The song menu displays a list of the most recently played songs

View menu commands

The View menu offers the following commands:

Art	This command will display the album art if it is available.
Song Info	This command will display song information if it is available.
Liner Notes	This command will display the liner notes if it is available.
Lyrics	This command will display the song lyrics if it is available.
Credits	This command will display the song credits if it is available.

Help menu commands

The Help menu offers the following commands, which provide you assistance with this application:

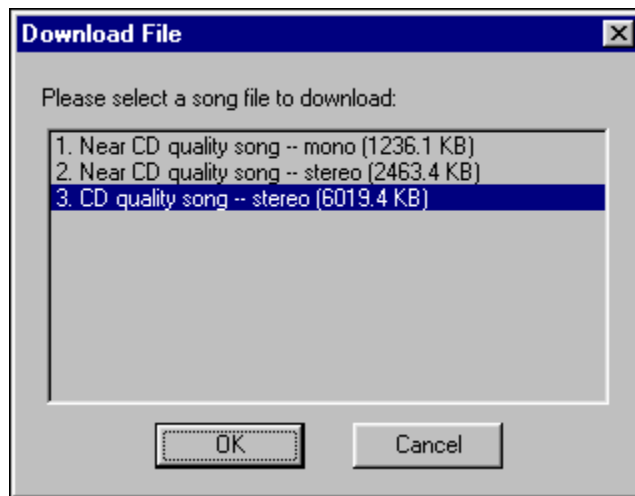
<u>Help Topics</u>	Offers you an index to topics on which you can get help.
<u>About</u>	Displays the version number of this application.

Downloading a song

When the download button is active, you can click the button to download the currently playing song, the player will display the Download selection dialog box, select the song you wish to download by clicking on the item, then click OK.

The player will then display a Save As dialog box for you to specify the name and location of the to save the downloaded file.

Download selection dialog box



This dialog box display a list of descriptions of songs available for download.

Liquid Audio Home page



To get to the Liquid Audio home page at any time, simply click on the Liquid Audio Icon located at the upper left hand corner of the Liquid MusicPlayer.

Transport Controls

Rewind Button



The rewind button rewinds the currently playing audio.

Forward Button



The forward button forwards the currently playing audio.

Pause Button



The pause button pauses the currently playing audio.

Play Button



The play button plays the currently loaded or queued audio.

Stop Button



The stop button stops the currently playing audio.

Play Slider



The play slider sets the starting position and plays the currently loading or queued audio

About Status Bar



The Status bar is located along the bottom of the player. It contains the streaming icon, the message area and the time display.

Streaming Icon



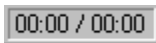
The streaming icon, located on the leftmost part of the status bar, indicates that audio is being streamed over the Internet.

Message Area



The message area, located on the status bar between the streaming icon and the time displays important messages to the user.

Time Display



The time display, located on the rightmost part of the status bar, shows the elapsed time of the audio currently playing as well as the total time length of the audio.

Open command (File menu)

Use this command to open a Liquid Audio music file, Liquid MusicPlayer displays the File Open dialog box for you to select the music file to open.

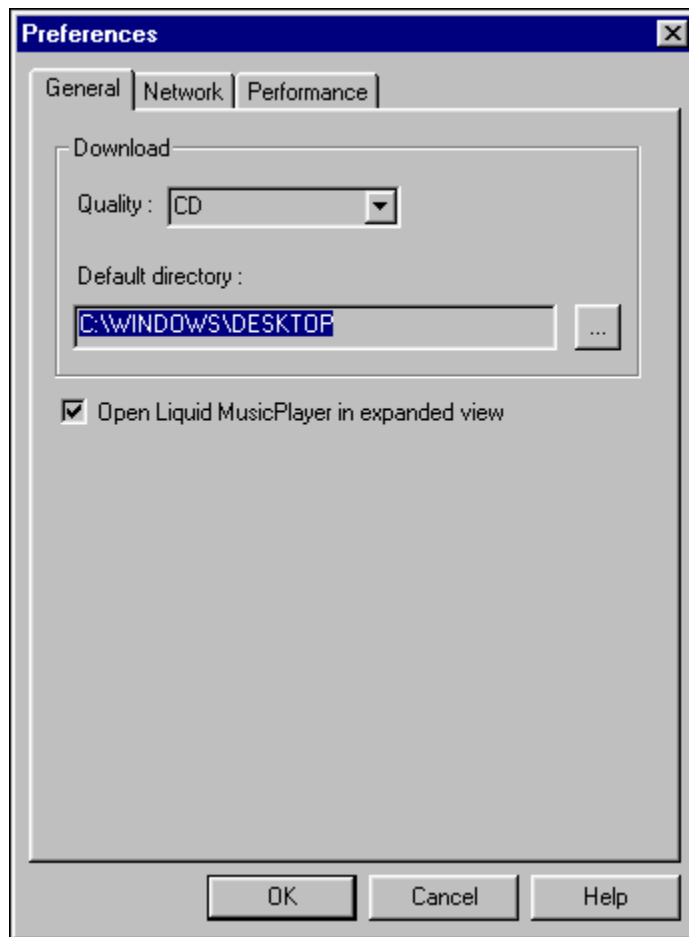
Close command (File menu)

Use this command to close the currently opened Liquid Audio music file

Preferences command (File menu)

Use this command to set user preferences for the music player, Liquid MusicPlayer displays the User Preferences Dialog box, you can set your general preferences, network preferences or performance preferences.

User Preferences Dialog box



After setting preferences, hit OK to exit preferences dialog box, cancel to cancel the changes, apply to make the changes but stay in the preferences dialog box.

General preferences

Download Quality

Select your default audio download quality.

Default Download Directory

Select the default directory to download files to.

Open Liquid MusicPlayer in Expanded View

Check this box if you want to open the Liquid MusicPlayer in expanded view.

Network preferences

Streaming Bandwidth

Select the bandwidth of your Internet connection. If you're unsure, choose 28.8.

Firewall

UDP/RTP or TCP

Select transmission protocol type. UDP/RTP gives better results but choose TCP if you can't hear any sound.

UDP/RTP Data port

Enter the RTP data port. Should be changed only at the direction of your network administrator.

Proxy

Enabled

Check this box to enable proxy service through a firewall.
Should be changed only at the direction of your network administrator.

Port

Enter the proxy port.

Host name

Enter the proxy's host name.

Performance preferences

Performance Tradeoffs

This feature is currently not implemented.

Buffering

Select size of audio to buffer.

View Statistics (File menu)

Use this command to display the statistics window.

File Open dialog box

The following options allow you to specify which file to open:

File Name

Type or select the filename you want to open. This box lists files with the extension you select in the List Files of Type box.

List Files of Type

Select the type of file you want to open:

File Save As dialog box

The following options allow you to specify the name and location of the file you're about to save:

File Name

Type a new filename to save a document with a different name. Liquid MusicPlayer adds the extension you specify in the Save File As Type box.

Save as type

Select the type of you want to save the file as.

Exit command (File menu)

Use this command to end your Liquid MusicPlayer session. You can also use the Close command on the application Control menu.

Shortcuts

Mouse: Click on the application's exit button.



Index command (Help menu)

Use this command to display the opening screen of Help. From the opening screen, you can jump to step-by-step instructions for using Liquid MusicPlayer and various types of reference information.

Once you open Help, you can click the Contents button whenever you want to return to the opening screen.

Using Help command (Help menu)

Use this command for instructions about using Help.

About command (Help menu)

Use this command to display the copyright notice and version number of your copy of Liquid MusicPlayer.

No Help Available

No help is available for this area of the window.

No Help Available

No help is available for this message box.

