

# Main index

---



[Menu commands](#)

[Introduction](#)

[Games](#)

[Questions and answers](#)

[Registration](#)

## Menu commands

---

These commands are issued through the main menu.

### Main Menu



---

[Game](#)

[Options](#)

# Game

---

These commands start a new game or exit Color Fun.

## Main menu

<u>N</u> ew G
E <u>x</u> it Ctrl+X

---

New

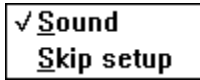
Exit

# Options

---

These commands change the general game options.

## Main menu



---

Sound

Skip setup

# Game-New

---

This menu command starts a new game. Depressing **G** will also invoke this command.

## Game-New dialog-box



---

### Select game

Select the color

Push the color

One of three

Guess the picture

### Times


# Select the color

---

This game requires the player to select the correct color with the mouse. The name of the color is spoken and a square of the color is displayed to help.

## Select the color

Color Fun



Colors

☐ Black

☐ Purple

☐ Blue

☐ Red

☐ Gray

☐ White

☐ Green

☐ Yellow

Help

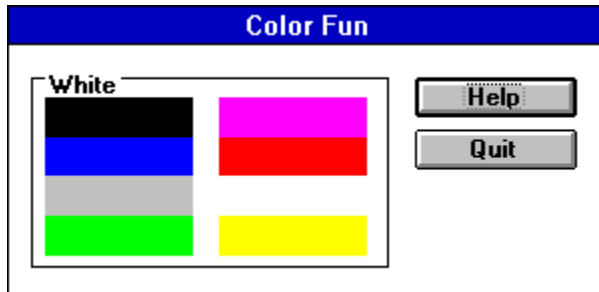
Quit

# Push the color

---

This game requires the player to select the correct bar of the color with the mouse. The name of the color is spoken and shown in small type.

## Push the color

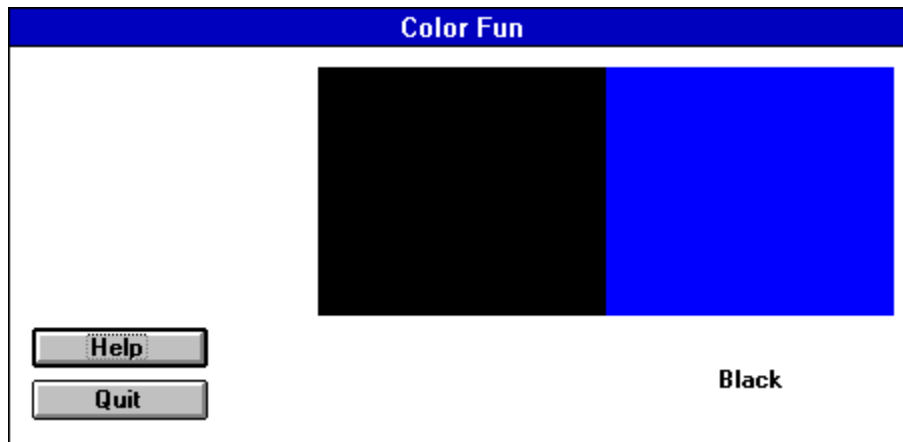


# One of three

---

This game requires the player to pick the correct example of a color. The name of the color is spoken and shown in small type. Three large colored squares are displayed. The correct color can be chosen by clicking the mouse on its square, or pressing the correct number (1-3) corresponding to the squares position (from left to right).

## One of three

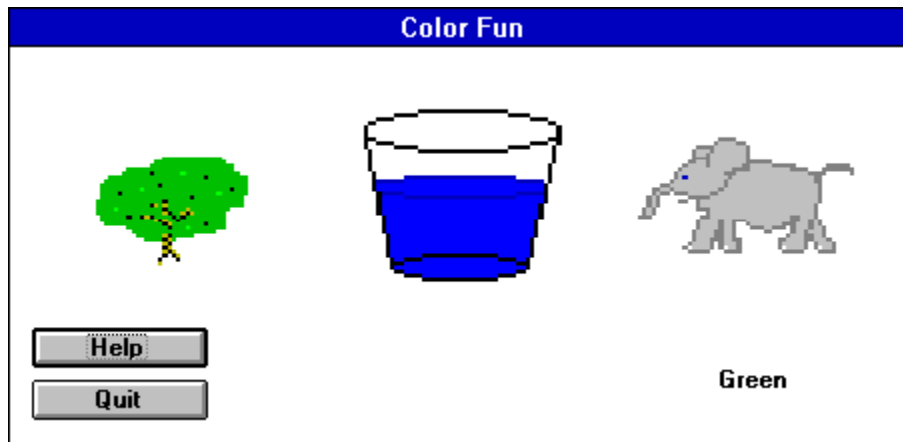


# Guess the picture

---

This game requires the player click on the correct square. The name of the color is spoken and three pictures of colored objects are displayed. The correct color can be chosen by clicking the mouse on its graphic, or pressing the correct number (1-3) corresponding to the graphics position (from left to right).

## Guess the picture





# Times

---

The game is played a certain number of times.

**Five**

**Ten**

**Fifteen**

**Twenty**

# Game-Exit

---

This menu command exits the Color Fun program completely. Depressing **Ctrl+X** will also invoke this command.

# Options-Sound

---

This menu command toggles whether sound will be played.

# Options-Skip setup

---

This menu command toggles whether the Game-New dialog-box will be skipped. If it is skipped, the default choices for type of game and number of times will be used.

# Introduction

---

Color Fun is an interactive game for children of ages 2-8. The game teaches children about eight basic colors and about using computers while having fun. A Color Fun session should last from 5 to 15 minutes depending on the child's age and attention span. Younger children should be helped by an older child or adult. Many children don't know the mouse or keyboard yet, so guidance may be necessary. Point to the proper key or help guide the mouse. The program uses a smiling face and That is correct or yay when a correct answer is given. Supplement the computer's positive reinforcement by saying something like good boy (or girl) when the correct answer is given. Most important, have fun!

# Games

---

There are four slightly different games in [Color Fun](#).

[Select the color](#)

[Push the color](#)

[One of three](#)

[Guess the picture](#)

# Questions and answers

---

**Question:** How do I begin a game?

**Answer:** Use the Game-New menu command.

**Question:** How do I pick a picture in One of three or Guess the picture?

**Answer:** Either click the mouse on the correct picture or press the number key (1-3) corresponding to the correct picture, numbered from left to right.

**Question:** What if I don't have a sound card?

**Answer:** The game can be played without sound, although it is not quite the same. Many sound cards are currently under \$60 or you can get a speaker driver for Windows from Microsoft.

# Registration

---

Color Fun is a shareware program that has a two week evaluation period after which a payment of \$12 is required. As shareware, Color Fun was distributed freely in order to allow people to "test drive" it. The try-before-you-buy concept allows users to find out which programs are useful before purchasing them. If a shareware program is useful or entertaining, please support it through registration. The registration fee for Color Fun is only \$12. These twelve dollars entitle you to the newest version of the program, a printed manual, customer support (through the mail or on CompuServe, AOL, Delphi, Genie, or the Internet), and information (and discounts) on other offerings from Burnham Park Software, Inc. There are four other games in the Fun series: Animal Fun, Letter Fun, Number Fun, and Shape Fun. The price of any three games in the series is \$22. The price of all five games in the series is \$30. To register, go to the Registration Form page and use the File-Print Topic menu command. Fill out the resulting form and send to:

**Burnham Park Software, Inc.**  
**P.O. Box #814**  
**Chicago, IL 60690-0814**

**Phone: (312) 922-6313**  
**BBS: (312) 922-2839**  
**CompuServe: 71532,3271**  
**AOL: J null B**  
**Delphi: MARBRO**  
**GEnie: XRG36978**  
**Internet: snlmhb@hawk.depaul.edu**

Color Fun is supplied as is. The author disclaims all warranties, expressed or implied, including, without limitation, the warranties of merchantability and of fitness for any purpose. The author assumes no liability for damages, direct or consequential, which may result from the use of Color Fun.

## **ASP Ombusman statement**

Burnham Park Software, Inc. is a member of the Association of Shareware Professionals (ASP). ASP wants to make sure that the shareware principle works for you. If you are unable to resolve a shareware-related problem with an ASP member by contacting the member directly, ASP may be able to help. The ASP Ombudsman can help you resolve a dispute or problem with an ASP member, but does not provide technical support for members' products. Please write to the ASP Ombudsman at 545 Grover Road, Muskegon, MI 49442-9427 USA, FAX 616-788-2765 or send a CompuServe message via CompuServe Mail to ASP Ombudsman 70007,3536.



# Registration form

---

Name: \_\_\_\_\_

Street: \_\_\_\_\_

City: \_\_\_\_\_ State: \_\_\_\_\_ Zip code: \_\_\_\_\_

Country: \_\_\_\_\_

Phone: \_\_\_\_\_

Program registering: \_\_\_\_\_

Type of disk - 3.5: \_\_\_\_\_ 5.25: \_\_\_\_\_

Computer: \_\_\_\_\_

On-line services or BBSs: \_\_\_\_\_

\_\_\_\_\_

Where did you get the program: \_\_\_\_\_

\_\_\_\_\_

Amount enclosed: \_\_\_\_\_

\* Add \$1.00 shipping to Canada and Mexico. Add \$3.00 shipping to anywhere outside of North America.

Send to:

**Burnham Park Software, Inc.**  
**P.O. Box #814**  
**Chicago, IL 60690-0814**

