

Contents

ECS Overview

[Introduction](#)

[ECS Service Description](#)

[System Requirements](#)

Using ECS Fonts

[Positioning ECS Fonts](#)

[Selecting ECS Sample Signature Fonts](#)

[Selecting ECS Sample Logo Fonts](#)

[Changing ECS Font Sizes](#)

[Changing ECS Font Attributes](#)

[Moving ECS Fonts](#)

[Deleting ECS Fonts](#)

[Uninstalling ECS Fonts](#)

ECS Products & Guarantees

[Technical Support](#)

[Product & Service Warranty](#)

Licenses, Copyrights, etc.

[Software License and Distribution](#)

[Copyrights, Trademarks and Service Marks](#)

[U.S. Government Restricted Rights](#)

ECS Font Purchases

[ECS Ordering Information](#)

[ECS Font Prices](#)

[ECS Forms](#)

Introduction

Copyright © 1993,1994 by Electronic Cloning Systems. All Rights Reserved.

Welcome to **ECS**, the Electronic Cloning Systems' Scalable TrueType Signature Service!

All **ECS** personnel support the Shareware "Try-before-you-buy" concept for computer Software, Hardware, and related Services whenever possible. Therefore this "Demo Disk" contains a number of sample signature and logo fonts to demonstrate the ease and convenience of using **ECS** Scalable TrueType fonts.

ECS can digitize your signature or logo and convert it into a Scalable "TrueType" font. Scalable TrueType fonts provide many advantages, some of which are defined in the **ECS** Service Description section (Related Topics) of this "On Line" HELP System. Your fonts will be available at the touch of a key from within any applicable Windows 3.1 (or later) application.

ECS is committed to providing this service at the lowest realistic price. See the **ECS** Ordering Information and **ECS** Pricing sections for details.

For detailed instructions on how to use an **ECS** font sample, simply refer to the appropriate section of this "On Line" HELP System.

NOTE:

You are not required to remove the **ECS** Signature font sample fonts from your hard drive. If someone asks for your "John Hancock" on a document, give them a copy of the real "John Hancock" signature by using the **ECS** Scalable TrueType sample font.

The "John Hancock" signature copy provided is as it appears on the U.S. Declaration of Independence.

Enjoy!

ECS Service Description

ECS converts a sample of your Signature or Logo into a Windows 3.1 (or later) compatible Scalable TrueType font. The specific steps are as follows:

SIGNATURE FONT SERVICE: (Only Mail Orders are Accepted)

You complete the required order forms, include necessary payment and mail to **ECS**.

ECS Signature font orders require 3 signed forms as follows:

- Warranty and Disclaimer Form.
- Signature Sample Form.
- Signature Font Order Form.

ECS scans your signature into a computer and generates a Scalable TrueType font.

Your completed **ECS** Scalable TrueType Signature font is shipped to you on a 3.5" disk (5.25" optional), together with complete printed SETUP instructions and an extensive Hypertext "On Line" HELP System which will provide comprehensive instructions about installing and using your **ECS** font.

LOGO FONT SERVICE: (Only Mail Orders are Accepted)

ECS can also scan and convert your company or organization Logo(s) into a Scalable TrueType font. Send us a "Camera Ready" black & white laser printed sample on good quality paper if you already have a Logo, or send a sketch and complete detailed description of what you want, for a free price quote.

You complete the required order forms, include necessary payment and mail to **ECS**.

ECS Logo font orders require 3 signed forms as follows:

- Warranty and Disclaimer Form.
- Logo Price Quotation Form, received from **ECS** after submitting a sample for Price Quote.
- Logo Font Order Form.

ECS scans your Logo into a computer and generates a Scalable TrueType font.

Your completed **ECS** Scalable TrueType Logo font is shipped to you on a 3.5" disk (5.25" optional), together with complete printed SETUP instructions and an extensive Hypertext "On Line" HELP System which will provide comprehensive instructions about installing and using your **ECS** font.

Related Topics:

[ECSDEMO.ZIP Contents](#)

[Why Scalable TrueType Fonts?](#)

[Questions and Answers](#)

ECSDEMO.ZIP Contents

The **ECSDEMO.ZIP** file should contain the files listed below. If any of them are missing or damaged, please contact us for replacement.

ECS.HLP
ECS_DEMO.FOT
ECS_DEMO.TTF
ECS_LOGO.FOT
ECS_LOGO.TTF
FILE_ID.DIZ
README.DOC
SETUP.EXE
SETUP.INS

You may **DOWNLOAD** the *ECS "Demo Disk"* file **ECSDEMO.ZIP** by **MODEM**:

To download the latest version of this Demo, Post a message, or Read a message, access the **Blue Ridge Express BBS**.

2400 baud BBS: (804) 790-1675

14.4 kbps BBS: (804) 790-9600

Download file: **ECSDEMO.ZIP**

Post or Read messages: Go to the **ECSFONT** Sub-Board System.

The *ECS "Demo Disk"* may be requested by **PHONE**:

Phone your request for an *ECS "Demo Disk"* to: (804) 385-4135

The *ECS "Demo Disk"* may be requested by **FAX**:

FAX your request for an *ECS "Demo Disk"* to: (804) 385-4213

Please include your name and complete mailing address, including ZIP.

Please print or type all information.

The *ECS "Demo Disk"* may be requested by **MAIL**:

Please include your name and complete mailing address, including ZIP.

Please print or type all information and send your request to:

ECS

P.O. Box 746

Forest, VA 24551-0746

Why Scalable TrueType Fonts?

Having your **ECS** Signature or Logo available as a Scalable TrueType font provides many obvious time saving and convenience advantages.

Some examples are listed below:

1. Inserting a Scalable TrueType signature into your document requires little effort and saves valuable time. **ECS** Scalable TrueType capability allows you to add your signature to documents with just a few keystrokes. Never again spend hours signing form letters, mass mailings, or office correspondence, and totally eliminate hand cramps.
2. **ECS** Scalable TrueType fonts provide a consistent, perfectly placed signature every time. Signature size can be changed at will and scaled to fit your needs. Signature variations are eliminated when signing multiple documents.
3. Your secretary or coworker is provided with a method of generating your signature when you are not available. No more delayed mailings because you could not sign the correspondence.
4. **ECS** Scalable TrueType fonts provide a method to sign your "Electronically Transmitted" Faxes and other correspondence.
5. Support for **ECS** Scalable TrueType fonts is built into Windows 3.1 or later, the **ECS** font is available from within any Windows 3.1 or later application by simply touching a key. Special printer or screen drivers are not required.
6. **ECS** Scalable TrueType fonts typically consume 60-70% less disk space (normally under 10k) than a standard graphic image of your signature or logo. If your font is contained in several documents stored on your computer's hard disk, obviously the **ECS** Scalable TrueType fonts will save considerable hard disk space.

Questions and Answers

Q. What are TrueType Fonts?

- A. TrueType fonts are a special type of Scalable character font available for use in all applications running under Windows, Version 3.1 (or later). Support for these fonts is included in Windows 3.1 or later and additional fonts such as the **ECS** Signature or Logo fonts can be readily installed, and do not require additional drivers. The **ECS** Signature and Logo fonts have the same characteristics as other Windows 3.1 or later TrueType fonts, which include scalability and attributes such as bold and italic.

Q. You mean that I can scale my signature or logo?

- A. Yes. The **ECS** Signature or Logo font that you will receive is an actual Scalable TrueType font, and can be scaled to any size your system hardware will support.

Q. How long will it take to generate my Font order?

- A. We normally ship credit card signature orders by regular mail within one week after receipt, Monday thru Friday. Complex logo orders and orders paid for by check or money order shall be shipped within fourteen (14) days after receipt.

Q. Can I order my signature font electronically?

- A. No. **ECS** strives to provide uniform high quality fonts for all customers. We can ensure the desired uniform high quality only by scanning all customer signature samples with our very high resolution scanner.

Q. What if I don't like the ECS Signature or Logo font that I receive?

- A. **ECS** provides a 30 day money back guarantee. If you are not completely satisfied, simply obtain a product return authorization number, return the product to us and we will refund your purchase price (less shipping and handling). Under no circumstances shall the refund amount exceed the original purchase price.

Q. Can I fax my signature or logo to ECS?

- A. No. **ECS** strives to provide uniform high quality fonts for all customers. We can ensure the desired uniform high quality only by scanning all customer signature and logo samples with our very high resolution scanner.

Q. Can I use my Signature or Logo font on more than one computer?

- A. Yes. **ECS** places no restrictions on the use of your signature or logo font. You can use your signature font on several computers or networks at the same time.

NOTE:

ECS will absolutely not be responsible for any unauthorized use of your ECS scalable Signature or Logo TrueType font under any circumstances.

Refer to ECS Warranty and Disclaimer Form.

System Requirements

MINIMUM HARDWARE REQUIREMENTS:

ECS recommends at least a 386SX IBM compatible PC with 2 MBytes RAM.

SOFTWARE REQUIREMENTS:

All **ECS** signature and logo fonts can be used with any software which utilizes TrueType fonts, running under Microsoft Windows, Version 3.1 (or later).

HARD DISK REQUIREMENTS:

An individual **ECS** signature or logo font file generally takes up less than 10 KBytes of disk space.

PRINTER REQUIREMENTS:

You may use any type printer running under Microsoft Windows, Version 3.1 (or later), however a Laser Printer will provide the best quality **ECS** Signature or Logo on your documents.

NOTE:

The **ECS** installation has added the line "**OutlineThreshold=70**" (without quotation marks) to the [**TrueType**] section of your **WIN.INI** file to facilitate the use of Signature and Logo fonts.

Your original **WIN.INI** file has been renamed **WIN.ECS** and still exists in your Windows Directory.

This addition to your **WIN.INI** file which was brought to your attention during the **ECS** "INSTALL" routine will not affect normal Windows operation in any way, with or without the use of **ECS** fonts.

Positioning *ECS* Fonts

Position the cursor in your document where you wish to place the desired ***ECS*** font, just as you would do to position any other Windows TrueType font character.

Selecting *ECS* Sample Signature Fonts

The Scalable TrueType fonts on the *ECS* "Demo Disk" are signature or logo samples. To use, simply follow the steps described below.

Select the *ECS* font, **ECS Demo**, and the **desired font point size** from your word processor's menu, just as you would normally do when selecting any other Windows font. The point size for a signature sample should normally be 20 or larger.

After selecting the desired sample font and desired point size, **Press a LETTER KEY (A - C or a - c)** to insert a sample signature font. The selected font (not letter on the key you pressed) will be placed into your document at the initial cursor location.

Refer to the following table for *ECS* LETTER KEY and FONT SAMPLE correlation.

KEYBOARD KEY	SIGNATURE FONT SAMPLE
A or a	a
B or b	b
C or c	C

NOTE:

If the **ECS Demo** font is Uninstalled (removed) from your system, the SIGNATURE FONT SAMPLE column above will display and print A - C or a - c, which represents the keyboard keys originally pressed.

The entire **ECS** Signature is represented as a single character, therefore the point size for a signature must be quite large to relatively match the size of standard typed 10 or 12 point characters. Customer signature samples submitted for conversion are automatically "size adjusted" by **ECS** as required during processing.

Selecting *ECS* Sample Logo Fonts

The Scalable TrueType fonts on the *ECS* "Demo Disk" are signature or logo samples. To use, simply follow the steps described below.

Select the *ECS* font, **ECS Logo**, and the **desired font point size** from your word processor's menu, just as you would normally do when selecting any other Windows font.

After selecting the desired sample font and desired point size, **Press** a **LETTER KEY** (**A - C** or **a - c**) to insert a sample logo font. The selected font (not letter on the key you pressed) will be placed into your document at the initial cursor location.

Refer to the following table for *ECS* LETTER KEY and FONT SAMPLE correlation.

KEYBOARD KEY	LOGO FONT SAMPLE
A or a	a
B or b	b
C or c	C

NOTE:

If the *ECS Logo* font is Uninstalled (removed) from your system, the LOGO FONT SAMPLE column above will display and print A - C or a - c, which represents the keyboard keys originally pressed.

Changing *ECS* Font Sizes

To change the size of an ***ECS*** signature OR LOGO font, simply "Highlight" the selected font and change the point size from your word processor's menu, just as you would change the size of any other Windows TrueType font.

HINT:

The point size for a signature should be approximately double the point size of your text. You will want to check various combinations to determine the best point size for your signature.

Changing *ECS* Font Attributes

To change the attribute (Bold, Italic, Underlined, etc.) of an ***ECS*** signature or logo font, simply "Highlight" the font and change the attribute from your word processor's menu, just as you would change the attribute of any other Windows TrueType font.

Moving *ECS* Fonts

To move a signature or logo font LEFT, simply place the cursor to the left of it and use the BACKSPACE key; to move RIGHT, use the SPACE bar, just as you would do when moving any other character.

HINT:

If you have increased the point size of your signature in a document to match the relative size of the other text, you will find that it moves in large steps (increments) when you try to position it. Simply use your arrow key to move the cursor one additional space to the left of your signature and then it will move in the same size steps as the rest of your text.

Deleting *ECS* Fonts

To delete an ***ECS*** signature or logo font, just "Highlight" the selected font and press the DELETE key or place the cursor to the right of the font and use the BACKSPACE key, just as you would do when deleting any other character.

Uninstalling *ECS* Fonts

To Uninstall an ECS Font (or any other Font), using your mouse after you have started Windows, Version 3.1 (or later), follow the simple steps below.

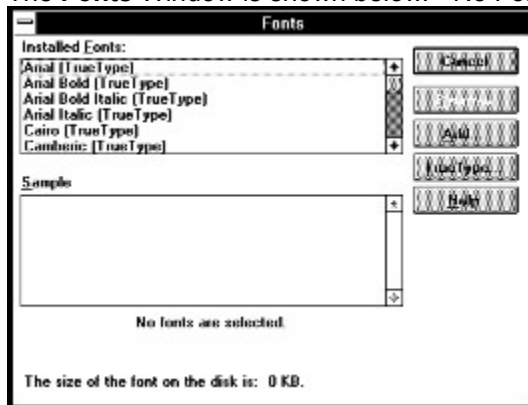
1. From the Main Program Group Window, select the Control Panel Icon. The Control Panel Window will appear.

The **Control Panel** Window is shown below.



2. From the Control Panel Window, select the Fonts Icon. The Fonts Window will appear.

The **Fonts** Window is shown below. No Fonts have been selected yet.



3. From the Fonts Window, select the Font you wish to Uninstall (Remove).
4. From the Fonts Window, select the "Remove" button. The Remove Font Window will appear.

The **Remove Font** Window is shown below showing the ECS_Demo Font selected for removal.



5. From the Remove Font Window, select the "Delete Font File From Disk" box as shown above.
6. From the Remove Font Window, select the "Yes to All" button, the Fonts Window will reappear.

7. From the Fonts Window, select the "Close" button. The Control Panel Window will reappear.
8. From the Control Panel Window, activate (select) the pull down menu, choose "Close".

Your selected fonts have been Uninstalled (Removed).

Technical Support

Because Microsoft Windows, Version 3.1 (or later), fully supports Scalable TrueType fonts, you should not have any problems using the **ECS** fonts. However, since Murphy's law strikes everyone, we are not immune.

PLEASE NOTE:

DUE TO WINDOWS' FONT RASTERIZER LIMITATIONS, DISPLAY ANOMALIES HAVE BEEN OBSERVED ON SOME SYSTEMS WHEN USING POINT SIZES SMALLER THAN APPROXIMATELY 20 FOR SIGNATURE OR LOGO FONTS. THESE SIZES ARE SMALLER THAN THOSE ORDINARILY USED FOR SIGNING DOCUMENTS AND SHOULD NOT CREATE A CONTINUAL ANNOYANCE.

PRINTING IS NORMAL, AND NOT AFFECTED BY THESE IRREGULARITIES.

SCREEN DISPLAY ANOMALY: (Key designation instead of Image)

The **ECS** Signature and Logo fonts are much more complex than a single standard text character which it replaces. Because of the Windows' font rasterizer limitations, various small sizes of these complex fonts sometime appear on screen as a keyboard character representing the key which was pressed, or a small box, instead of the desired font image. This display anomaly is not consistent in all viewing modes (i.e. Normal and Print Preview), and is a function of system memory, resources, et cetera, and does not affect printing.

SCREEN DISPLAY ANOMALY: (Partial Image and/or Cursor conflict)

When using various small Signature and Logo font point sizes, the Windows font rasterizer will occasionally only partially display the desired font image and at other times not release control of the cursor. If this happens, switch to another viewing screen and then return to your original document screen to complete the font image and/or regain control of the cursor. Just switching between screens (i.e. Normal to Print Preview and return) is all that is required.

If you experience a problem, please contact us by phone (804) 385-4135 (VOICE). The best time to phone **ECS** is between 12:00 PM and 5:00 PM, EST, Monday thru Friday, except holidays.

Product & Service Warranty

ECS guarantees your satisfaction with this product for a period of 30 days after purchase.

If your **ECS** Signature or Logo font is not satisfactory, phone (804) 385-4135 and request a product return authorization number, return the product, and we will refund the purchase price (less shipping and handling).

In no event shall the refund amount exceed the actual purchase price of the product.

ECS scans all disks with "Microsoft Antivirus" prior to shipping to ensure product integrity.

ECS warrants that all disks provided to customers are free from defects in material and workmanship, assuming normal use, for a period of 90 days from the original purchase date. If you have a problem with a disk, please return the defective disk for a free replacement.

Please print or type your name and address clearly and include a copy (or original) of your Font Shipping Invoice.

Send Defective Disk and Invoice to: **ECS**
P. O. Box 746
Forest, VA 24551-0746

Software License and Distribution

This **ECS** software (Contents of the **ECS** "Demo Disk") is not, and has never been, public domain or free software. It is provided to demonstrate the ease of using **ECS** Signature and Logo Fonts, and is licensed for that use alone.

No restrictions are placed on the use of a purchased **ECS** Scalable Signature or Logo font beyond the limits of applicable governing law. A limited license is granted to copy and distribute this "Demo Disk" as described herein for the trial use by others, subject to the above limitations, and also the following:

The software files must be copied in unmodified form, complete with the file containing this license information. The files may be compressed using readily obtainable archiving programs, provided that all files are included in the archive file.

The full machine-readable documentation must be included with each copy.

No fee, charge, or other compensation may be requested or accepted, except as authorized below:

Operators of electronic bulletin board systems may make this "Demo" available for down loading only as long as the above conditions are met. An overall or time dependent charge for the use of the bulletin board system is permitted as long as there is not a specific charge for the download of this "Demo Disk".

Vendors of user-supported or shareware software approved by the Association of Shareware Professionals may distribute our products, without specific permission. Non approved vendors may distribute our products only after obtaining written permission from **ECS** (such permission is usually granted). Please write for details and enclose your catalog. Vendors may charge a disk duplication and handling fee not to exceed ten (10) U. S. dollars.

Non-profit user groups may distribute copies of our products to their members, subject to the above conditions, without specific permission. Non-profit groups may collect a disk duplication and handling fee not to exceed ten (10) U. S. dollars.

Copyrights, Trademarks and Service Marks

"ECS" is a registered Service Mark of *Electronic Cloning Systems*, all other names and/or logos displayed or mentioned are Trademarks or Service Marks of, or Copyrighted by, their respective companies.

U.S. Government Restricted Rights

Use, duplication, or disclosure by the Government is subject to restrictions as set forth in subdivision (b) (3) (ii) of the Rights in Technical Data & Computer Software clause at 252.227-7013.

Contractor/Manufacturer is **ECS**, PO. Box 746, Forest, VA 24551-0746.

ECS Ordering Information

GENERAL TERMS, SIGNATURE FONTS: (Only Mail Orders are Accepted)

All **ECS Signature Font** orders must include the following three (3) **ECS** forms which can be printed directly from the Forms Section of this "On Line" HELP System.

ECS Warranty and Disclaimer Form.

ECS Signature Sample Form.

ECS Signature Font Order Form.

Detailed ordering instructions can also be found in the Forms Section. The basic idea is to print the forms and follow the instructions to place your order. Be sure to use a good quality paper for your signature sample to obtain the best possible **ECS** Scalable Signature TrueType font.

GENERAL TERMS, LOGO FONTS: (Only Mail Orders are Accepted)

All **ECS Logo Font** orders must include the following two (2) **ECS** forms which can be printed directly from the Forms Section of this "On Line" HELP System.

ECS Warranty and Disclaimer Form.

ECS Logo Font Order Form.

Additionally, all **ECS Logo Font** orders must include the **Price Estimate Form** received from **ECS** after submitting your "Camera Ready" black & white laser printed Logo sample on good quality paper if you already have a Logo, or sending a sketch and complete detailed description of what you want, for a free price quote. All "Logo Font" samples must be sent to **ECS** for a price quote before placing an order, due to the large variety of styles, sizes, and complexities possible.

GENERAL TERMS, ALL ORDERS: (Only Mail Orders are Accepted)

COD orders are not acceptable, all orders must include payment.

PRICES AND TERMS:

Prices listed in the "**ECS Pricing**" section and terms indicated in this section and elsewhere in this "On Line" HELP System are subject to future change without further notice.

Contact **ECS** by the following methods for additional information.

Phone: (804) 385-4135 (VOICE).

The best time to contact **ECS** is between 12:00 PM and 5:00 PM, EST, Monday thru Friday, except holidays.

Mail Address: (All Orders) **ECS**
P. O. Box 746
Forest, VA 24551-0746

METHOD OF PAYMENT:

ECS accepts Mastercard and Visa credit cards, money orders, and checks. Due to high bank fees, only checks and money orders drawn on U. S. banks for U. S. dollars are accepted.

FONT SHIPMENTS:

Shipment of "money order" and check orders are delayed for fourteen (14) days to allow for bank clearance. Credit Card orders are normally shipped within one week after order receipt, Monday thru Friday, except holidays.

PLEASE NOTE:

ECS ships orders to all 50 U. S. states and Canada for a \$4.95 (U.S. Dollars) Shipping and Handling charge for each font, additional charges apply for shipment to other countries, contact **ECS** for details.

DISK SIZE:

All **ECS Fonts** are regularly furnished on a 3.5" disk. If you do not have a 3.5" drive, we can copy the files onto a 5.25" disk. An additional fee of \$ 1.00 per disk will be added for this special 5.25" disk handling.

***ECS* Font Prices**

PLEASE NOTE: The following price is for "Signature Fonts" only.

THE PRICE FOR *ECS* SIGNATURE FONTS IS \$39.95 EACH.

THIS PRICE IS SUBJECT TO FUTURE CHANGE WITHOUT FURTHER NOTICE.

SHIPPING AND HANDLING IS \$4.95 FOR EACH FONT.

"Logo Font" prices start at \$39.95, plus \$4.95 shipping and handling, samples or sketches and complete detailed descriptions must be sent to ***ECS*** for a free price quote before ordering, due to the large variety of styles, sizes, and complexities possible.

METHOD OF PAYMENT:

ECS accepts Mastercard and Visa credit cards, money orders, and checks. Due to high bank fees, only checks and money orders drawn on U. S. banks for U. S. dollars are accepted.

ECS Forms

[ECS Warranty and Disclaimer Form](#)

[ECS Signature Sample Form](#)

[ECS Signature Font Order Form](#)

[ECS Logo Font Order Form](#)

[ECS Comment and Suggestion Form](#)

ECS Warranty and Disclaimer Form

NOTE: Microsoft Windows, Version 3.1 (or later) is required to use *ECS* Fonts.

ECS WARRANTY (Service and/or Product)

ECS guarantees your satisfaction with its products for a period of 30 days after purchase. If your **ECS** Scalable TrueType Signature or Logo font is not satisfactory, obtain a product return authorization number, return the font to us, and we will refund the purchase price. Actual refund amount shall not exceed the original purchase price of the product.

ECS warrants that all disks provided are free from defects in workmanship and material, for a period of 90 days from original purchase date, assuming normal use.

ECS DISCLAIMER (Service and/or Product)

EXCEPT AS PROVIDED ABOVE, **ECS** DISCLAIMS ALL WARRANTIES, EITHER EXPRESSED OR IMPLIED, INCLUDING, BUT NOT LIMITED TO, IMPLIED WARRANTIES OF MERCHANTABILITY AND FITNESS FOR A PARTICULAR PURPOSE, WITH RESPECT TO SUBJECT PRODUCT. SHOULD THE PRODUCT PROVE DEFECTIVE, THE PURCHASER ASSUMES THE RISK OF PAYING THE ENTIRE COST OF ALL NECESSARY SERVICING, REPAIR, OR CORRECTION, AND ANY INCIDENTAL OR CONSEQUENTIAL DAMAGES. IN NO EVENT, WILL **ECS** BE LIABLE FOR ANY DAMAGES WHATSOEVER (INCLUDING WITHOUT LIMITATION, DAMAGES FOR LOSS OF BUSINESS PROFITS, BUSINESS INTERRUPTION, LOSS OF BUSINESS INFORMATION AND THE LIKE) ARISING OUT OF THE USE OR INABILITY TO USE THIS PRODUCT, EVEN IF **ECS** HAS BEEN ADVISED OF THE POSSIBILITY OF SUCH DAMAGE.

ECS WILL ABSOLUTELY NOT BE RESPONSIBLE FOR ANY UNAUTHORIZED USE OF YOUR SIGNATURE OR LOGO FONT UNDER ANY CIRCUMSTANCES.

Use of this product for any period of time constitutes your acceptance of this agreement and subjects you to its contents.

I have read the above **ECS** information and accept all conditions.

Name (Please Print)

Signature (Please Sign)
Date

THANK YOU FOR YOUR ORDER!

ECS Signature Sample Form

NOTE: Microsoft Windows, Version 3.1 (or later) is required to use *ECS* Fonts.

ECS wants you to be satisfied with your purchase!

If you are like most people, you never sign your name the same way 2 times in a row.

Please sign your name using your favorite pen in the following 4 areas (Signature Sample for conversion), select the one you like best for conversion to an **ECS** TrueType font and cross out the other 3.

Please sign your entire name without touching any text.

Signature Sample for conversion.

Signature Sample for conversion.

Signature Sample for conversion.

Signature Sample for conversion.

NOTE:

If you are not satisfied with any of your signature samples, print a new sheet and sign new samples until one is obtained that you like and submit it for conversion.

I submit the above Signature Sample to **ECS** for conversion.

Name (Please Print)

Signature (Please Sign)
Date

THANK YOU FOR YOUR ORDER!

ECS Signature Font Order Form

NOTE: Microsoft Windows, Version 3.1 (or later) is required to use *ECS* Fonts.

Send this form with your order. Please print or type, except signature.

Name..... _____

Street Address... _____

City, State & Zip. _____

Telephone (include area code)... _____

Credit Card Type: (circle one) Mastercard Visa

Credit Card Number..... _____

Credit Card Expiration Date..... _____

Name on the Credit Card..... _____

Total Fonts ordered _____ @ \$ _____ each Total price \$ _____

VA residents add 4.50% sales tax Total VA tax \$ _____

U.S. and Canada S & H: @ \$ 4.95 each Total S & H \$ _____

Additional fee for 5.25" disks: @ \$ 1.00 each Total fees \$ _____

TOTAL \$ _____ **ORDER**

Signature

Date

Send this form, together with your Signature Sample Form, Warranty and Disclaimer Form, and payment to:

ECS

PO Box 746

Forest VA 24551-0746

THANK YOU FOR YOUR ORDER!

ECS Logo Font Order Form

NOTE: Microsoft Windows, Version 3.1 (or later) is required to use *ECS* Fonts.

Send this form with your order after receiving Logo Price Quotation (s).
please print or type, except signature.

Name..... _____

Street Address... _____

City, State & Zip. _____

Telephone (include area code)... _____

Credit Card Type: (circle one) Mastercard Visa

Credit Card Number..... _____

Credit Card Expiration Date..... _____

Name on the Credit Card..... _____

Total Fonts ordered @ \$ _____ each Total price \$ _____

VA residents add 4.50% sales tax Total VA tax \$ _____

U.S. and Canada S & H: @ \$ 4.95 each Total S & H \$ _____

Additional fee for 5.25" disks: @ \$ 1.00 each Total fees \$ _____

TOTAL \$ _____

ORDER

Signature

Date

Send this form, together with your Logo Price Quotation (s) (sent to you by **ECS**),
Warranty and Disclaimer Form, and payment to:

ECS
PO Box 746
Forest VA 24551-0746

THANK YOU FOR YOUR ORDER!

***ECS* Comment and Suggestion Form**

ECS welcomes your comments and suggestions regarding improvements to our products and the opportunity to serve you more efficiently.

Mail Your comments and suggestions to: ***ECS***
P. O. Box 746
Forest, VA 24551-0746

